

THIS PRODUCT MANUFACTURED WITH LEAD-FREE PROCESSING

DO NOT SCALE FROM THIS PRINT

DESIGNED & DIMENSIONED IN MILLIMETERS [INCHES]

SMA-J-C-X-ST-BH5

GENDER
-J: JACK

TYPE
-C: CABLE

TERMINATION
-BH5: BULKHEAD 5 (063" SEMI-FLEXIBLE CABLE)

ORIENTATION
-ST: STRAIGHT

PLATING SPECIFICATION
-H: 30μ" GOLD CENTER CONTACT, 3μ" GOLD OUTER CONTACT (SEE TABLE 1)

TABLE 1		
ITEM	COMPONENT	-H
1	SUB ASSEMBLY	SUB-SMA-J-C-F-ST-BH5
2	SOCKET	SMA-SKT-003-H
3	INSULATOR	SMA-INS-011
4	LOCK WASHER	SMA-LWAS-001-F
5	NUT	SMA-NUT-001-F

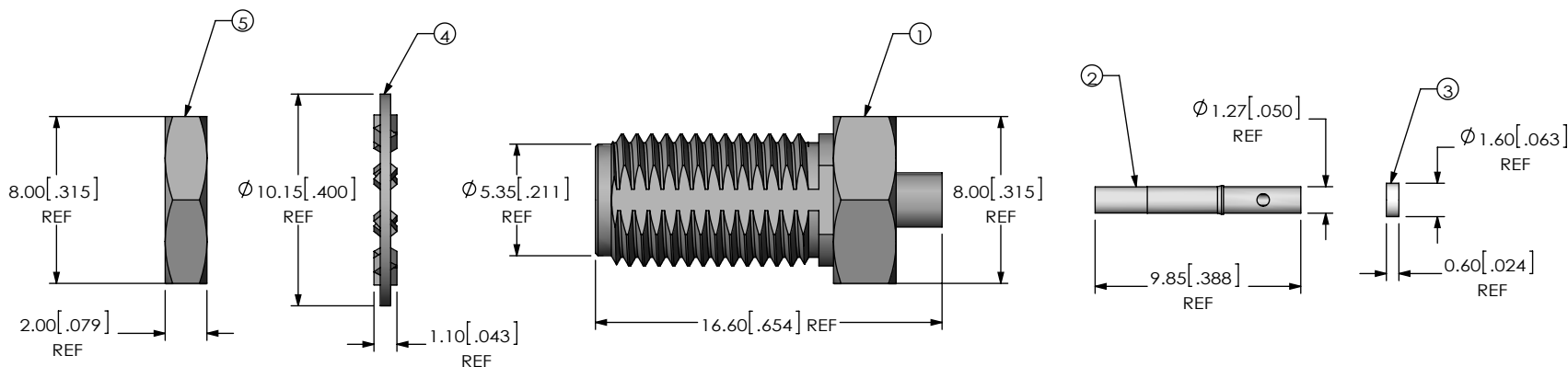
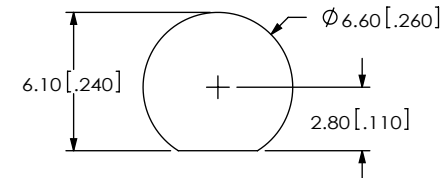


FIG 1
SMA-J-C-X-ST-BH5 SHOWN

RECOMMENDED PANEL CUTOUT
3.80 [.150] MAX. PANEL THICKNESS



NOTES:

1. $\text{\textcircled{C}}$ REPRESENTS A CRITICAL DIMENSION.
2. CENTER CONTACT PUSHOUT FORCE: 13.35 N [3 LB] MIN.
3. NOTE DELETED.
4. PRODUCT TO BE PACKAGED PER PACKAGING STANDARD CO-RF-WI-3040-M.
5. NOTE DELETED.
6. NOTE DELETED.
7. NOTE DELETED.
8. NOTE DELETED.

UNLESS OTHERWISE SPECIFIED, DIMENSIONS ARE IN MILLIMETERS. TOLERANCES ARE:
 DECIMALS ANGLES
 X.X: ±0.3 [.01] 5°
 X.XX: ±0.05 [.002]
 X.XXX: ±0.025 [.0010]

PROPRIETARY NOTE
 THIS DOCUMENT CONTAINS CONFIDENTIAL AND PROPRIETARY INFORMATION AND ALL DESIGN, MANUFACTURING, REPRODUCTION, USE, PATENT RIGHTS AND SALES RIGHTS ARE EXPRESSLY RESERVED BY SAMTEC, INC. THIS DOCUMENT SHALL NOT BE DISCLOSED, IN WHOLE OR PART, TO ANY UNAUTHORIZED PERSON OR ENTITY NOR REPRODUCED, TRANSFERRED OR INCORPORATED IN ANY OTHER PROJECT IN ANY MANNER WITHOUT THE EXPRESS WRITTEN CONSENT OF SAMTEC, INC.



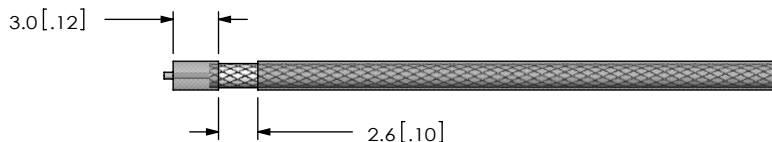
520 PARK EAST BLVD, NEW ALBANY, IN 47150
 PHONE: 812-944-6733 FAX: 812-948-5047
 e-Mail: info@SAMTEC.com code 55322

MATERIAL: DO NOT SCALE DRAWING SHEET SCALE: 1:0.333333
 SHELL, NUT, WASHER: BRASS
 CONTACT: COPPER ALLOY
 DIELECTRIC: PTFE

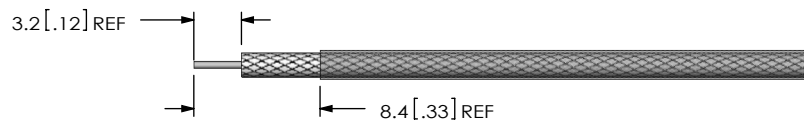
DESCRIPTION: SMA STR JACK BULKHEAD, 25 AWG CABLE - 50 OHM

DWG. NO. **SMA-J-C-X-ST-BH5**

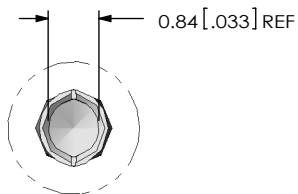
BY: M MURILLO 11/20/08 SHEET 1 OF 2



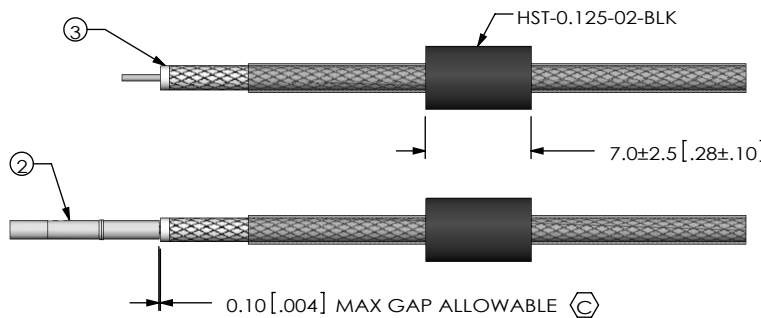
IN-PROCESS 1
STRIP AND LOCATE JACKET



IN-PROCESS 2
TIN INNER AND OUTER CONDUCTOR
REMOVE CUT JACKET

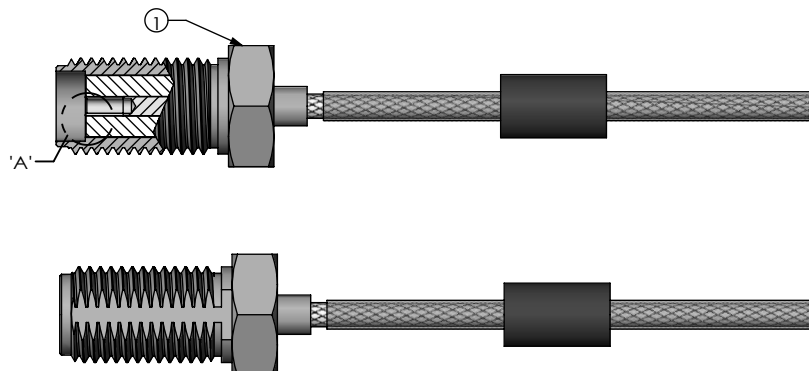
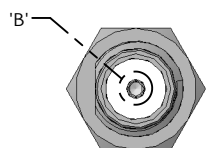


DETAIL 'B'
SCALE 8 : 1



IN-PROCESS 3
ADD INSULATOR AND HEAT SHRINK TUBE

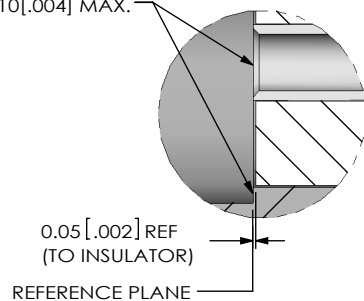
IN-PROCESS 4
SOLDER SIGNAL PIN



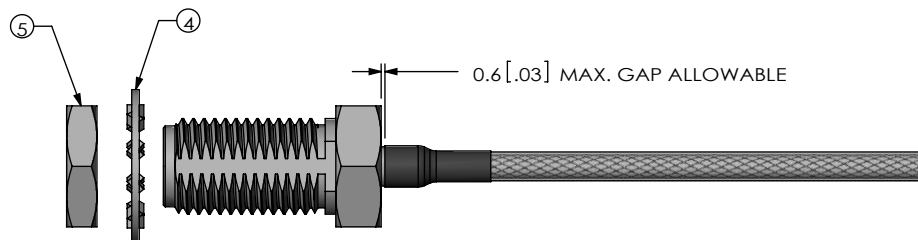
IN-PROCESS 5
ADD SUB ASSEMBLY

IN-PROCESS 6
SOLDER SUB ASSEMBLY

TIP OF CONTACT TO BE FLUSH WITH REFERENCE PLANE OR RECESSED 0.10[.004] MAX.



DETAIL 'A'
SCALE 8 : 1



IN-PROCESS 7
APPLY HEAT SHRINK TUBING

PROPRIETARY NOTE
THIS DOCUMENT CONTAINS CONFIDENTIAL AND PROPRIETARY INFORMATION AND ALL DESIGN, MANUFACTURING, REPRODUCTION, USE, PATENT RIGHTS AND SALES RIGHTS ARE EXPRESSLY RESERVED BY SAMTEC, INC. THIS DOCUMENT SHALL NOT BE DISCLOSED, IN WHOLE OR PART, TO ANY UNAUTHORIZED PERSON OR ENTITY NOR REPRODUCED, TRANSFERRED OR INCORPORATED IN ANY OTHER PROJECT IN ANY MANNER WITHOUT THE EXPRESS WRITTEN CONSENT OF SAMTEC, INC.

DO NOT SCALE DRAWING

SHEET SCALE: 2:1



520 PARK EAST BLVD, NEW ALBANY, IN 47150
PHONE: 812-944-6733 FAX: 812-948-5047
e-Mail info@SAMTEC.com code 55322

DESCRIPTION:
SMA STR JACK BULKHEAD, 25 AWG CABLE - 50 OHM

DWG. NO.

SMA-J-C-X-ST-BH5

BY: M MURILLO 11/20/08

SHEET 2 OF 2