

THIS PRODUCT MANUFACTURED WITH LEAD-FREE PROCESSING

DESIGNED & DIMENSIONED IN MILLIMETERS [INCHES]

SMA-J-C-X-ST-SB1

GENDER
-J: JACK

TERMINATION
-SB1: SEALED BULKHEAD (RG174 OR RG316)

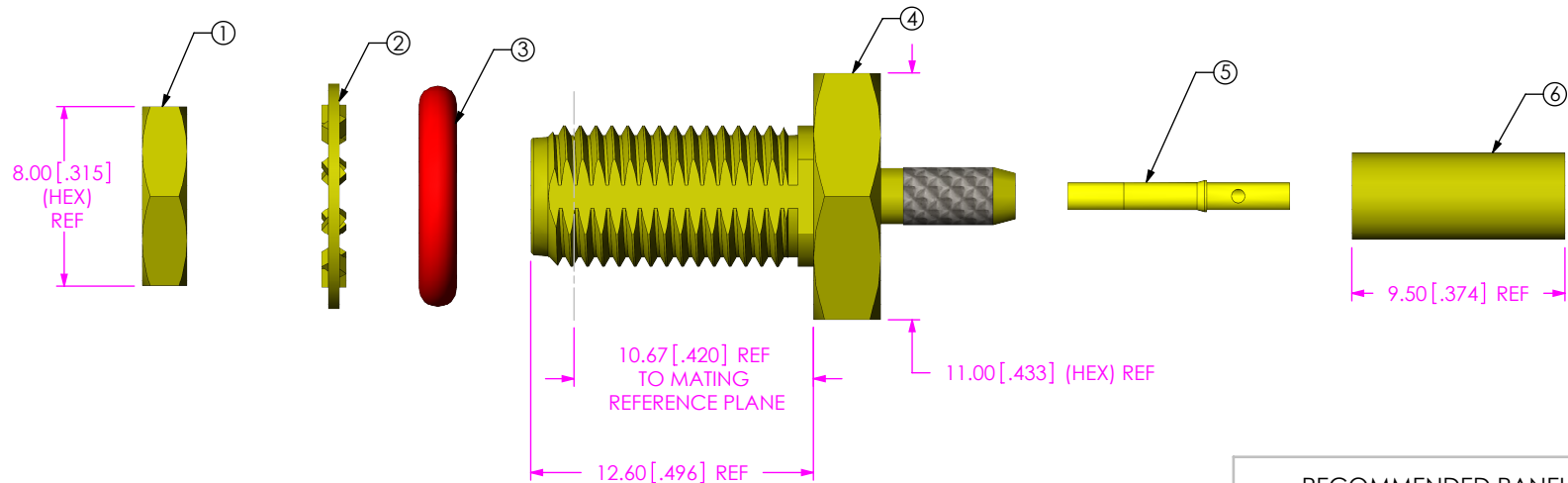
TYPE
-C: CABLE

ORIENTATION
-ST: STRAIGHT

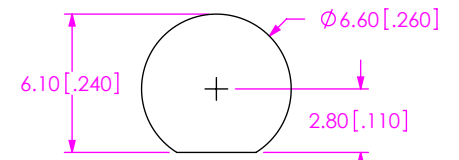
PLATING SPECIFICATION
-H: 30µ" GOLD CENTER CONTACT, 3µ" GOLD OUTER CONTACT (SEE TABLE 1)

DO NOT SCALE FROM THIS PRINT

TABLE 1		
ITEM	COMPONENT	-H
1	HEX NUT	SMA-NUT-001-F
2	LOCK WASHER	SMA-LWAS-001-F
3	GASKET	SMA-GKT-002
4	SUB ASSEMBLY	SUB-SMA-J-C-F-ST-SB1
5	SKT	SMA-SKT-001-H
6	FERRULE	SMA-FER-001-F



RECOMMENDED PANEL CUTOUT
3.80 [.150] MAX. PANEL THICKNESS



NOTES:

- Ⓢ REPRESENTS A CRITICAL DIMENSION.
- NOTE DELETED.
- NOTE DELETED.
- DEL NOTE 4.
- PRODUCT TO BE PACKAGED PER PACKAGING STANDARD CO-RF-WI-3040-M.
- NOTE DELETED.
- NOTE DELETED.
- NOTE DELETED.

UNLESS OTHERWISE SPECIFIED, DIMENSIONS ARE IN MILLIMETERS [INCHES].
TOLERANCES ARE:
DECIMALS ANGLES
.X: ±0.3 [.01] 5°
.XX: ±0.13 [.005]
.XXX: ±0.051 [.0020]

PROPRIETARY NOTE
THIS DOCUMENT CONTAINS CONFIDENTIAL AND PROPRIETARY INFORMATION AND ALL DESIGN, MANUFACTURING, REPRODUCTION, USE, PATENT RIGHTS AND SALES RIGHTS ARE EXPRESSLY RESERVED BY SAMTEC, INC. THIS DOCUMENT SHALL NOT BE DISCLOSED, IN WHOLE OR PART, TO ANY UNAUTHORIZED PERSON OR ENTITY NOR REPRODUCED, TRANSFERRED OR INCORPORATED IN ANY OTHER PROJECT IN ANY MANNER WITHOUT THE EXPRESS WRITTEN CONSENT OF SAMTEC, INC.



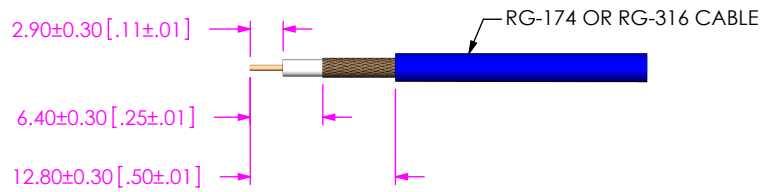
520 PARK EAST BLVD, NEW ALBANY, IN 47150
PHONE: 812-944-6733 FAX: 812-948-5047
e-Mail: info@SAMTEC.com code: 55322

MATERIAL: DO NOT SCALE DRAWING SHEET SCALE: 4:1
SHELL, FERRULE, NUT, WASHER: BRASS
CONTACT: COPPER ALLOY
DIELECTRIC: PTFE
GASKET: SILICONE

DESCRIPTION:
SMA STR JACK S BULKHEAD, RG174 & RG316- 50 OHM

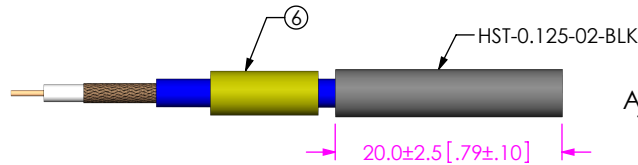
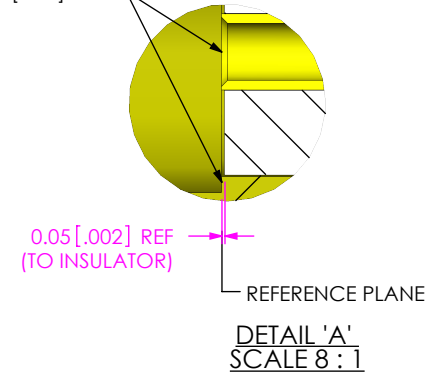
DWG. NO. **SMA-J-C-X-ST-SB1**

BY: R MUSSER 04/05/2009 SHEET 1 OF 2

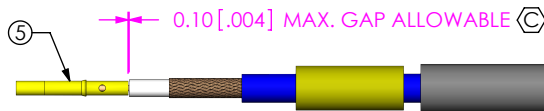


IN PROCESS 1
STRIP AND TIN INNER
CONDUCTOR

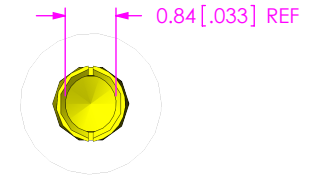
TIP OF CONTACT TO BE FLUSH
WITH REFERENCE PLANE
OR RECESSED 0.10 [.004] REF



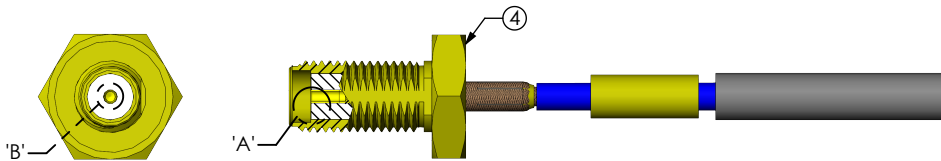
IN-PROCESS 2
ADD HEAT SHRINK
TUBE & FERRULE



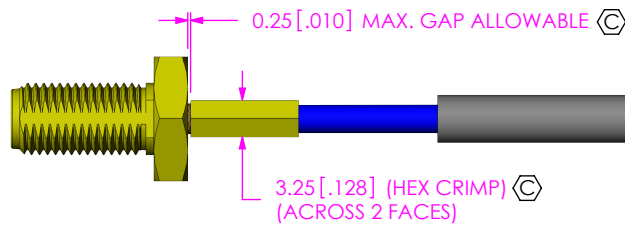
IN-PROCESS 3
SOLDER SIGNAL SOCKET



DETAIL 'B'
SCALE 8:1

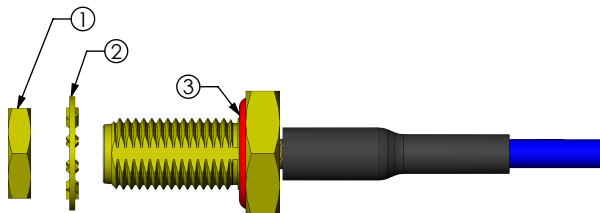


IN-PROCESS 4
ADD SUB ASSEMBLY



IN-PROCESS 5
CRIMP FERRULE
(USE CRIMP HAND TOOL
#CAT-RF-FER-01
OR EQUIVALENT)
(USE .128" HEX DIE)

F:\DWG\MISC\MKTG\SMA-J-C-X-ST-SB1-MKT.SLDDRW



IN PROCESS 6
APPLY HEAT SHRINK TUBING
& ADD GASKET

PROPRIETARY NOTE
THIS DOCUMENT CONTAINS CONFIDENTIAL AND
PROPRIETARY INFORMATION AND ALL DESIGN,
MANUFACTURING, REPRODUCTION, USE, PATENT RIGHTS
AND SALES RIGHTS ARE EXPRESSLY RESERVED BY SAMTEC,
INC. THIS DOCUMENT SHALL NOT BE DISCLOSED, IN WHOLE
OR PART, TO ANY UNAUTHORIZED PERSON OR ENTITY NOR
REPRODUCED, TRANSFERRED OR INCORPORATED IN ANY
OTHER PROJECT IN ANY MANNER WITHOUT THE EXPRESS
WRITTEN CONSENT OF SAMTEC, INC.

samtec
520 PARK EAST BLVD, NEW ALBANY, IN 47150
PHONE: 812-944-6733 FAX: 812-948-5047
e-Mail: info@SAMTEC.com code: 55322

DO NOT SCALE DRAWING

SHEET SCALE: 3:2

DESCRIPTION:
SMA STR JACK S BULKHEAD, RG174 & RG316- 50 OHM

DWG. NO.
SMA-J-C-X-ST-SB1

BY: R MUSSER 04/05/2009 SHEET 2 OF 2