

Pb THIS PRODUCT MANUFACTURED WITH LEAD-FREE PROCESSING

DESIGNED & DIMENSIONED IN MILLIMETERS [INCHES]

SMA-J-C-X-ST-SR1

GENDER
-J: JACK

TERMINATION
-SR1: SEALED REVERSE POLARITY BULKHEAD (RG174 OR RG316)

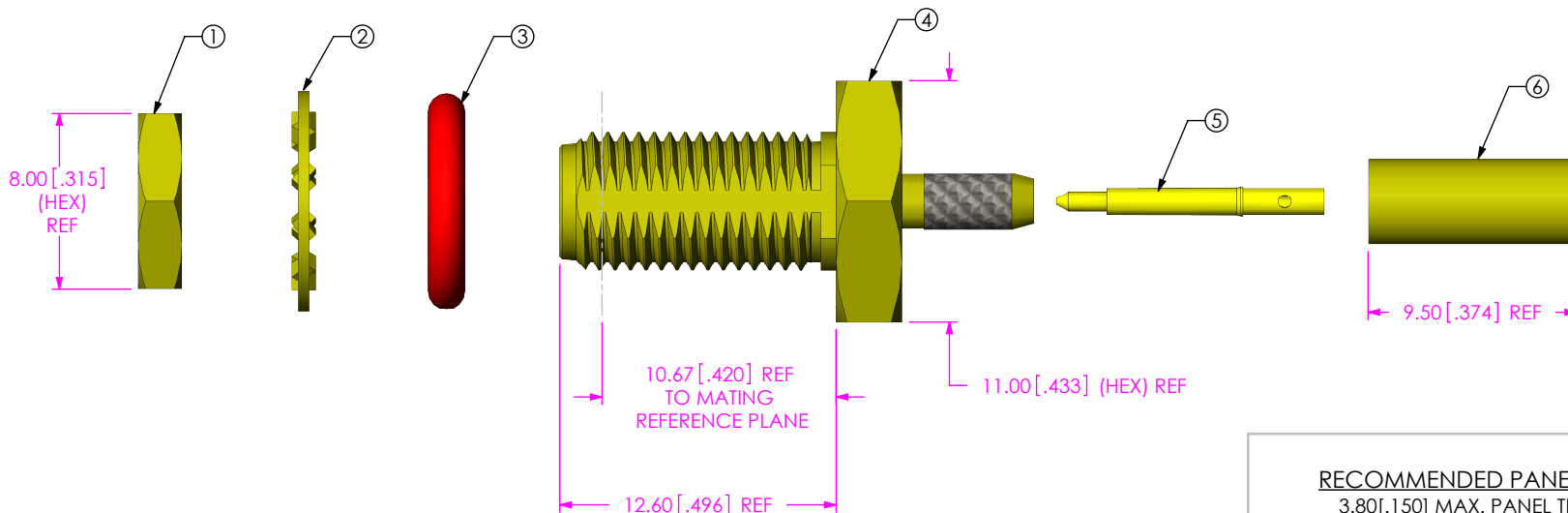
TYPE
-C: CABLE

ORIENTATION
-ST: STRAIGHT

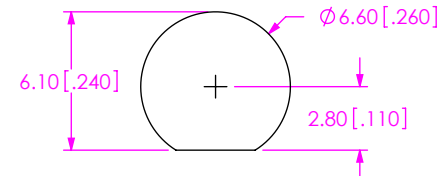
PLATING SPECIFICATION
-H: 30µ" GOLD CENTER CONTACT, 3µ" GOLD OUTER CONTACT (SEE TABLE 1)

DO NOT SCALE FROM THIS PRINT

TABLE 1		
ITEM	COMPONENT	-H
1	HEX NUT	SMA-NUT-001-F
2	LOCK WASHER	SMA-LWAS-001-F
3	GASKET	SMA-GKT-002
4	SUB ASSEMBLY	SUB-SMA-J-C-F-ST-SB1
5	PIN	SMA-PIN-005-H
6	FERRULE	SMA-FER-001-F



RECOMMENDED PANEL CUTOUT
3.80 [.150] MAX. PANEL THICKNESS



NOTES:

- ⊕ REPRESENTS A CRITICAL DIMENSION.
- NOTE DELETED.
- NOTE DELETED.
- NOTE DELETED.
- PRODUCT TO BE PACKAGED PER PACKAGING STANDARD CO-HD-WI-3040-M.
- NOTE DELETED.
- NOTE DELETED.
- NOTE DELETED.

UNLESS OTHERWISE SPECIFIED, DIMENSIONS ARE IN MILLIMETERS [INCHES]. TOLERANCES ARE:

DECIMALS ANGLES
.X: ±0.3 [.01] 5°
.XX: ±0.13 [.005]
.XXX: ±0.051 [.0020]

PROPRIETARY NOTE
THIS DOCUMENT CONTAINS CONFIDENTIAL AND PROPRIETARY INFORMATION AND ALL DESIGN, MANUFACTURING, REPRODUCTION, USE, PATENT RIGHTS AND SALES RIGHTS ARE EXPRESSLY RESERVED BY SAMTEC, INC. THIS DOCUMENT SHALL NOT BE DISCLOSED, IN WHOLE OR PART, TO ANY UNAUTHORIZED PERSON OR ENTITY NOR REPRODUCED, TRANSFERRED OR INCORPORATED IN ANY OTHER PROJECT IN ANY MANNER WITHOUT THE EXPRESS WRITTEN CONSENT OF SAMTEC, INC.

MATERIAL: DO NOT SCALE DRAWING SHEET SCALE: 1:0.333333
SHELL, FERRULE, NUT, WASHER: BRASS
CONTACT: BRASS
DIELECTRIC: PTFE
GASKET: SILICON



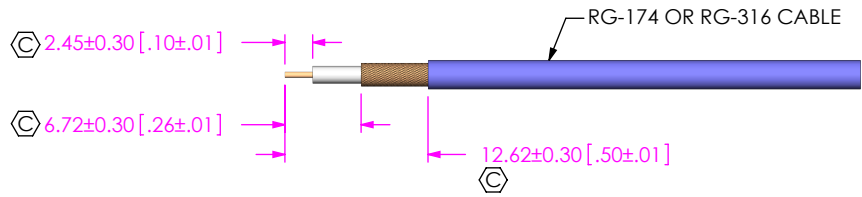
520 PARK EAST BLVD, NEW ALBANY, IN 47150
PHONE: 812-944-6733 FAX: 812-948-5047
e-Mail: info@SAMTEC.com code: 55322

DESCRIPTION:
SMA STR JACK S REV POLARITY, RG174 & RG316- 50 OHM

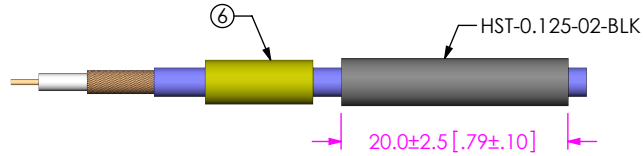
DWG. NO. SMA-J-C-X-ST-SR1

BY: R MUSSER 04/05/2009 SHEET 1 OF 2

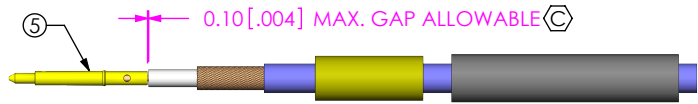
REVISION G



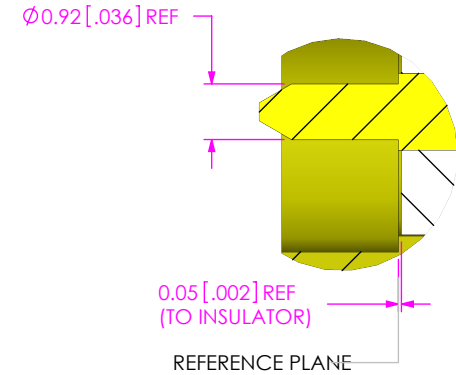
IN PROCESS 1
STRIP AND TIN INNER
CONDUCTOR



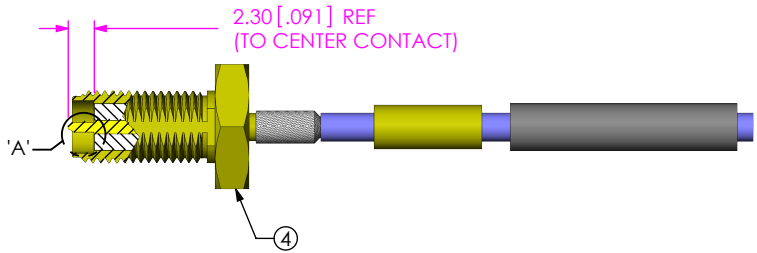
IN-PROCESS 2
ADD HEAT SHRINK
TUBE & FERRULE



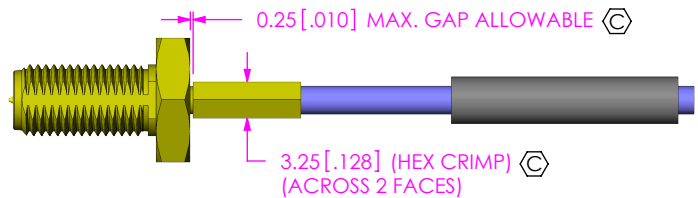
IN-PROCESS 3
SOLDER SIGNAL PIN



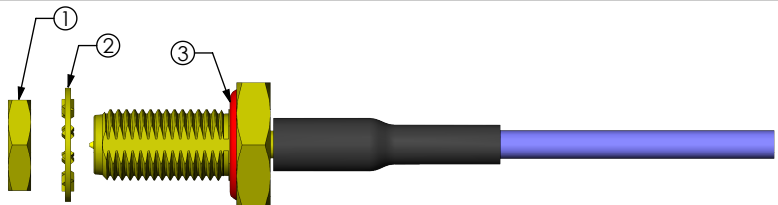
DETAIL 'A'
SCALE 8:1



IN-PROCESS 4
ADD SUB ASSEMBLY



IN-PROCESS 5
CRIMP FERRULE
(USE CRIMP HAND TOOL
#CAT-RF-FER-01
OR EQUIVALENT)
(USE .128" HEX DIE)



IN PROCESS 6
APPLY HEAT SHRINK TUBING
& ADD GASKET

F:\DWG\MISC\MKTG\SMA-J-C-X-ST-SR1-MKT.SLDDRW

PROPRIETARY NOTE
THIS DOCUMENT CONTAINS CONFIDENTIAL AND PROPRIETARY INFORMATION AND ALL DESIGN, MANUFACTURING, REPRODUCTION, USE, PATENT RIGHTS AND SALES RIGHTS ARE EXPRESSLY RESERVED BY SAMTEC, INC. THIS DOCUMENT SHALL NOT BE DISCLOSED, IN WHOLE OR PART, TO ANY UNAUTHORIZED PERSON OR ENTITY NOR REPRODUCED, TRANSFERRED OR INCORPORATED IN ANY OTHER PROJECT IN ANY MANNER WITHOUT THE EXPRESS WRITTEN CONSENT OF SAMTEC, INC.

DO NOT SCALE DRAWING

SHEET SCALE: 1.5:1



520 PARK EAST BLVD, NEW ALBANY, IN 47150
PHONE: 812-944-6733 FAX: 812-948-5047
e-Mail: info@SAMTEC.com code: 55322

DESCRIPTION:
SMA STR JACK S REV POLARITY, RG174 & RG316- 50 OHM

DWG. NO.
SMA-J-C-X-ST-SR1

BY: R MUSSER 04/05/2009 SHEET 2 OF 2