

THIS PRODUCT MANUFACTURED WITH LEAD-FREE PROCESSING

DESIGNED & DIMENSIONED IN MILLIMETERS [INCHES]

DO NOT SCALE FROM THIS PRINT

TABLE 1			
ITEM	COMPONENT	-H	GF
1	HEX NUT	SMA-NUT-001-F	
2	LOCK WASHER	SMA-LWAS-001-F	
3	GASKET	SMA-GKT-002	
4	SUB ASSEMBLY	SUB-SMA-J-C-F-ST-S10	
5	SOCKET	SMA-J-C-H-ST-B 10-SKT	SMA-J-C-G-ST-B 10-SKT
6	FERRULE	TNC-FER-003-F	

SMA-J-C-XX-ST-S10

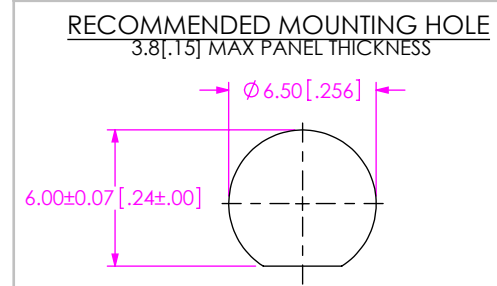
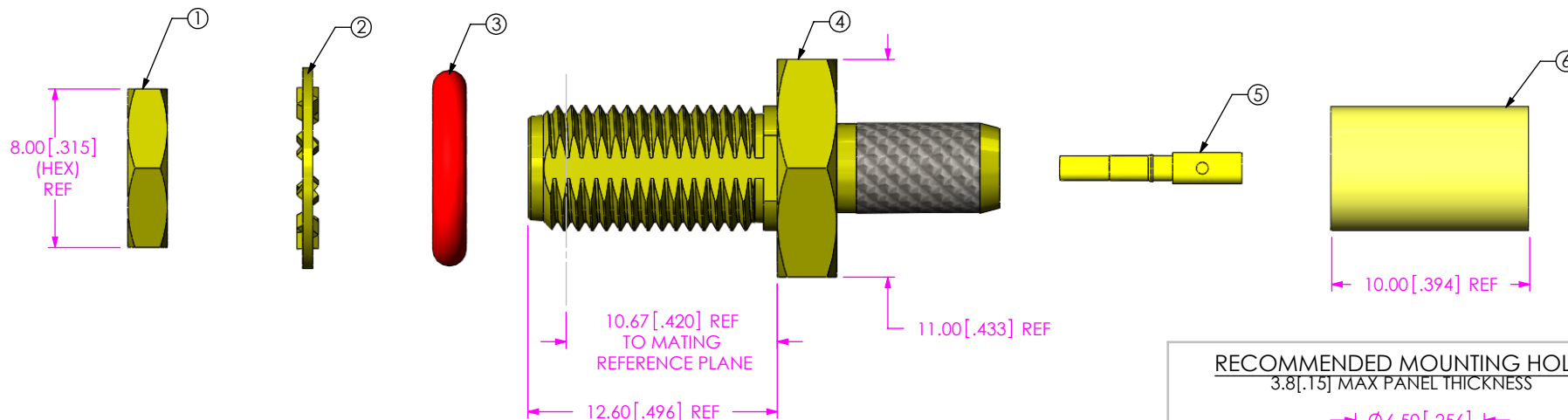
GENDER
-J: JACK

TERMINATION
-STO: SEALED BULKHEAD (RG58 CABLE)

TYPE
-C: CABLE

ORIENTATION
-ST: STRAIGHT

PLATING SPECIFICATION
-H: 30µ" GOLD CENTER CONTACT AND OUTER CONTACT
-GF: 10µ" GOLD CENTER CONTACT, 3µ" GOLD OUTER CONTACT (SEE TABLE 1)



NOTES:

- ① REPRESENTS A CRITICAL DIMENSION.
- NOTE DELETED.
- PRODUCT TO BE PACKAGED PER PACKAGING STANDARD CO-HD-WI-3040-M.
- NOTE DELETED.
- NOTE DELETED.
- NOTE DELETED.

UNLESS OTHERWISE SPECIFIED, DIMENSIONS ARE IN MILLIMETERS [INCHES]. TOLERANCES ARE:

DECIMALS	ANGLES
X.X: ±0.3 [.01]	5°
X.XX: ±0.13 [.005]	
X.XXX: ±0.051 [.0020]	

PROPRIETARY NOTE
THIS DOCUMENT CONTAINS INFORMATION CONFIDENTIAL AND PROPRIETARY TO SAMTEC, INC. AND SHALL NOT BE REPRODUCED OR TRANSFERRED TO OTHER DOCUMENTS OR DISCLOSED TO OTHERS OR USED FOR ANY PURPOSE OTHER THAN THAT WHICH IT WAS OBTAINED WITHOUT THE EXPRESSED WRITTEN CONSENT OF SAMTEC, INC.

MATERIAL: DO NOT SCALE DRAWING SHEET SCALE: 3:1
BODY, NUT, WASHER & FERRULE: BRASS
CONTACT: BeCu
DIELECTRIC: PTFE
GASKET: SILICONE

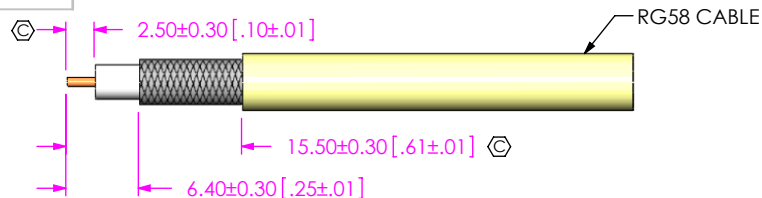
520 PARK EAST BLVD. NEW ALBANY, IN 47150
PHONE: 812-944-6733 FAX: 812-948-5047
e-Mail info@SAMTEC.com code 55322

DESCRIPTION:
SMA 50 OHM STRAIGHT JACK SEALED BULKHEAD FOR RG58

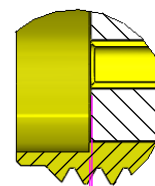
DWG. NO.
SMA-J-C-XX-ST-S10

BY: ALVIN W 09/07/2010 SHEET 1 OF 2

REVISION D

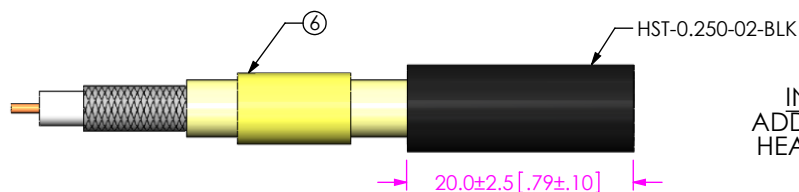


IN PROCESS 1
STRIP AND TIN INNER
CONDUCTOR

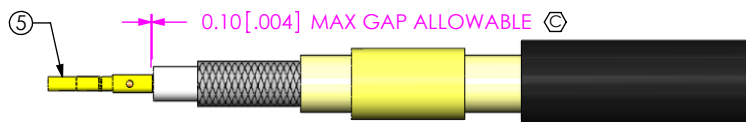


0.05 [.002] REF
(TO CONTACT
AND INSULATOR)

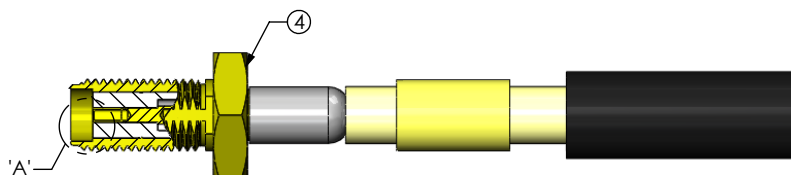
DETAIL 'A'
SCALE 5:1



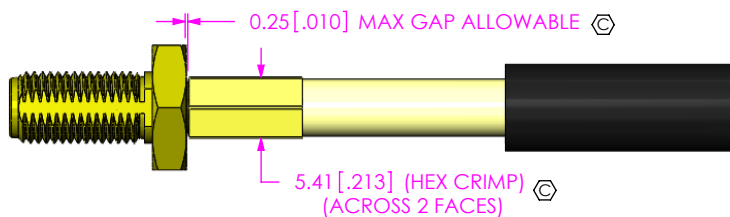
IN PROCESS 2
ADD FERRULE AND
HEAT SHRINK TUBE



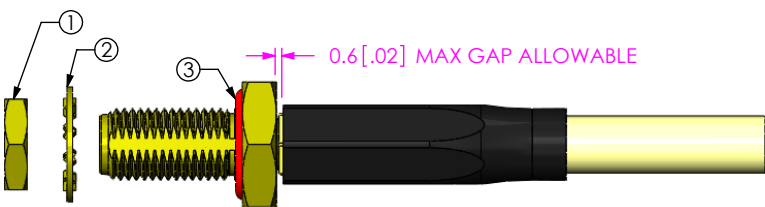
IN PROCESS 3
SOLDER SIGNAL SOCKET



IN PROCESS 4
ADD SUB ASSEMBLY



IN PROCESS 5
CRIMP FERRULE
(USE RF CRIMP HAND TOOL
#CAT-HT-126667-21 OR EQUIVALENT)



IN PROCESS 6
APPLY HEAT SHRINK TUBE
& ADD GASKET

PROPRIETARY NOTE
THIS DOCUMENT CONTAINS INFORMATION
CONFIDENTIAL AND PROPRIETARY TO
SAMTEC, INC. AND SHALL NOT BE REPRODUCED
OR TRANSFERRED TO OTHER DOCUMENTS OR
DISCLOSED TO OTHERS OR USED FOR ANY
PURPOSE OTHER THAN THAT WHICH IT WAS
OBTAINED WITHOUT THE EXPRESSED WRITTEN
CONSENT OF SAMTEC, INC.

DO NOT SCALE DRAWING

SHEET SCALE: 3:2



520 PARK EAST BLVD, NEW ALBANY, IN 47150
PHONE: 812-944-6733 FAX: 812-948-5047
e-Mail info@SAMTEC.com code 55322

DESCRIPTION:
SMA 50 OHM STRAIGHT JACK SEALED BULKHEAD FOR RG58

DWG. NO.
SMA-J-C-XX-ST-S10

BY: ALVIN W 09/07/2010 SHEET 2 OF 2