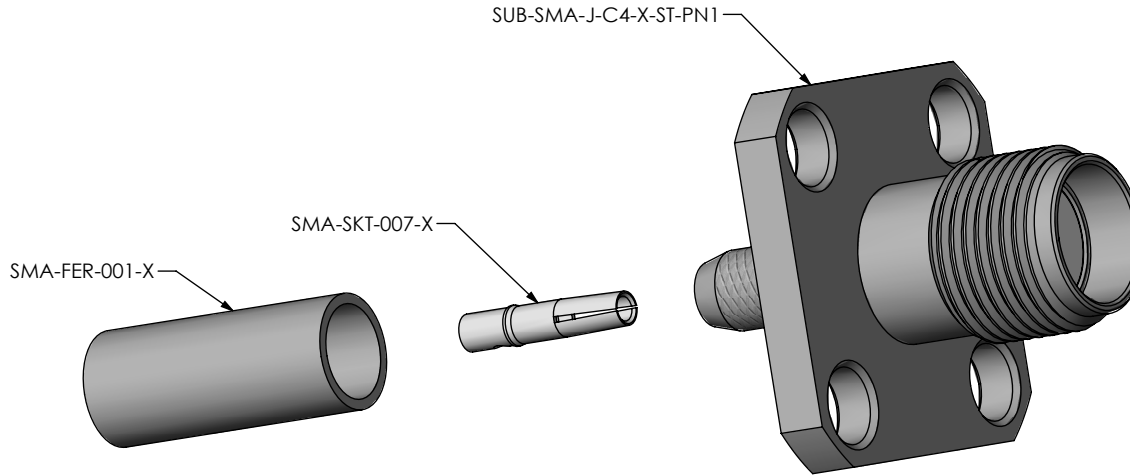


DO NOT SCALE FROM THIS PRINT

DESIGNED & DIMENSIONED IN MILLIMETERS [INCHES]

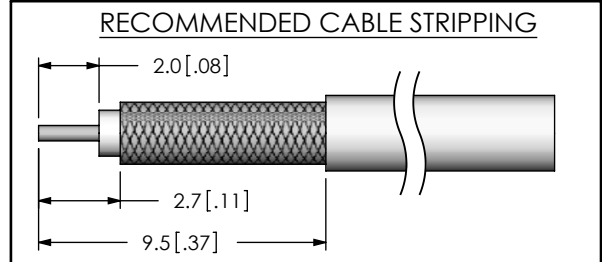
SMA-J-C4-XX-ST-PN1

- GENDER -J: JACK
- TERMINATION -PN: PANEL MOUNT
- ORIENTATION -ST: STRAIGHT
- PLATING SPECIFICATION
 - H: HEAVY GOLD (SEE NOTES 5 & 6) (SMA-FER-001-F) (SMA-SKT-007-H) (SUB-SMA-J-C4-F-ST-PN1)
 - GF: GOLD/FLASH GOLD (SEE NOTES 5 & 6) (SMA-FER-001-F) (SMA-SKT-007-G) (SUB-SMA-J-C4-F-ST-PN1)
- TYPE -C4: FOR CABLE 4 MOUNTING SCREWS




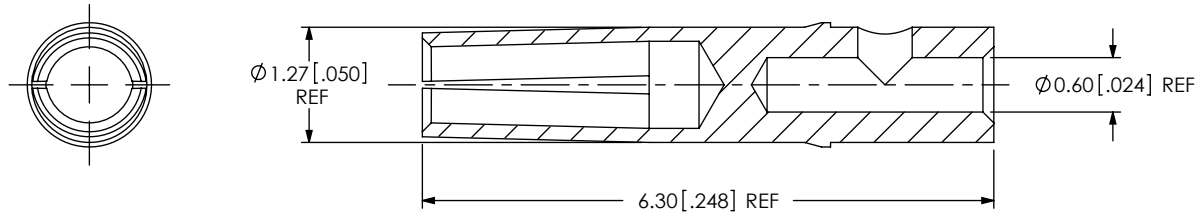
NOTES:

1. Ⓢ REPRESENTS A CRITICAL DIMENSION.
2. SEE SHEET 3 FOR TERMINATION INFORMATION.
3. PRODUCT TO BE PACKAGED PER PACKAGING STANDARD CO-HD-WI-3040M.
4. RoHS COMPLIANT.
5. COMPONENT PLATING DESIGNATIONS:
 - H: 0.000030" MIN. GOLD OVER 0.000050" MIN. NICKEL.
 - G: 0.000010" MIN. GOLD OVER 0.000050" MIN. NICKEL.
 - F: 0.000003" MIN. GOLD OVER 0.000050" MIN. NICKEL.
6. ASSEMBLY PLATING DESIGNATIONS:
 - H: (CENTER CONTACT)-H (OUTER CONTACT) -F (REMAINING METAL PARTS) -F
 - GF: (CENTER CONTACT)-G (OUTER CONTACT) -F (REMAINING METAL PARTS) -F



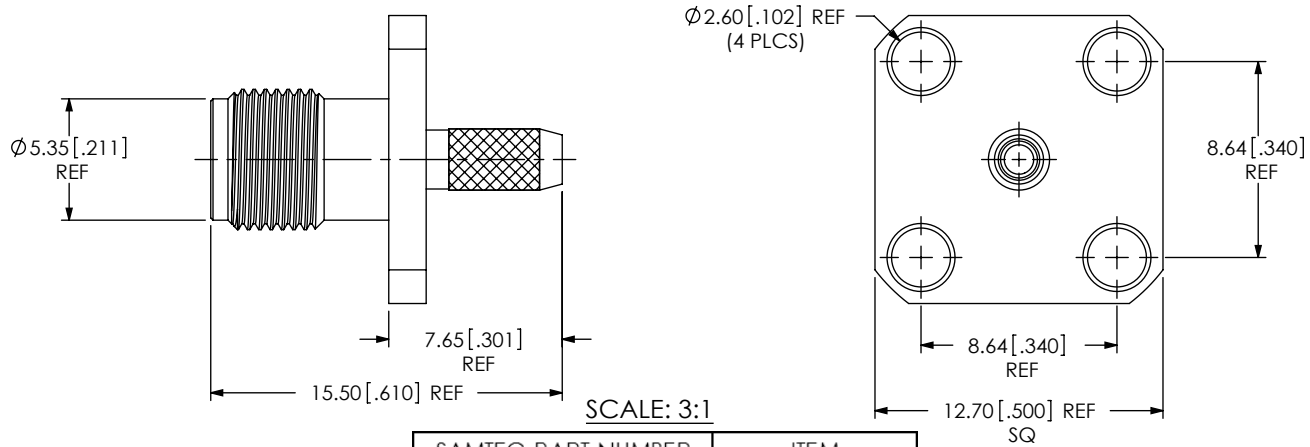
THIS PRODUCT MANUFACTURED WITH LEAD-FREE PROCESSING

<p>UNLESS OTHERWISE SPECIFIED, DIMENSIONS ARE IN MILLIMETERS [INCHES]. TOLERANCES ARE:</p> <p>DECIMALS ANGLES A</p> <p>.X: ±0.3 [.01] 5°</p> <p>.XX: ±0.13 [.005]</p> <p>.XXX: ±0.051 [.0020]</p>	<p>PROPRIETARY NOTE</p> <p>THIS DOCUMENT CONTAINS INFORMATION CONFIDENTIAL AND PROPRIETARY TO SAMTEC, INC. AND SHALL NOT BE REPRODUCED OR TRANSFERRED TO OTHER DOCUMENTS OR DISCLOSED TO OTHERS OR USED FOR ANY PURPOSE OTHER THAN THAT WHICH IT WAS OBTAINED WITHOUT THE EXPRESSED WRITTEN CONSENT OF SAMTEC, INC.</p>	 <p>520 PARK EAST BLVD, NEW ALBANY, IN 47150 PHONE: 812-944-6733 FAX: 812-948-5047 e-Mail: info@SAMTEC.com code: 55322</p>
<p>MATERIAL: DO NOT SCALE DRAWING</p> <p>BODY, FERRULE: BRASS CONTACT: BeCu DIELECTRIC: PTFE</p>	<p>SHEET SCALE: 3:1</p>	<p>DESCRIPTION: SMA 50 OHM, ST PANEL MOUNT JACK FOR RG316</p> <p>DWG. NO. SMA-J-C4-XX-ST-PN1</p> <p>BY: ALVIN W 08/05/2010 SHEET 1 OF 3</p>



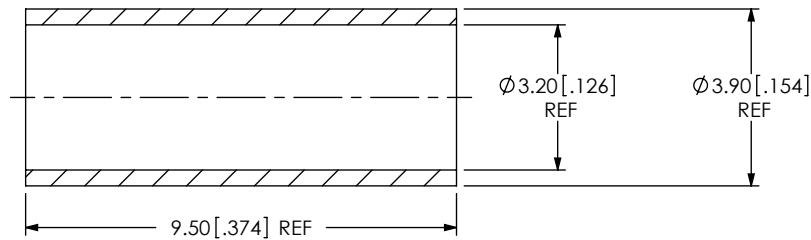
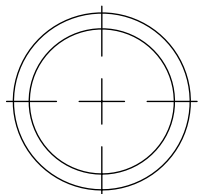
SCALE: 12:1

SAMTEC PART NUMBER	ITEM
SMA-SKT-007-X	PIN



SCALE: 3:1

SAMTEC PART NUMBER	ITEM
SUB-SMA-J-C4-X-ST-PN1	SUB ASSEMBLY



SCALE: 6:1

SAMTEC PART NUMBER	ITEM
SMA-FER-001-X	OUTER FERRULE

PROPRIETARY NOTE

THIS DOCUMENT CONTAINS INFORMATION CONFIDENTIAL AND PROPRIETARY TO SAMTEC, INC. AND SHALL NOT BE REPRODUCED OR TRANSFERRED TO OTHER DOCUMENTS OR DISCLOSED TO OTHERS OR USED FOR ANY PURPOSE OTHER THAN THAT WHICH IT WAS OBTAINED WITHOUT THE EXPRESSED WRITTEN CONSENT OF SAMTEC, INC.

DO NOT SCALE DRAWING

SHEET SCALE: 4:1

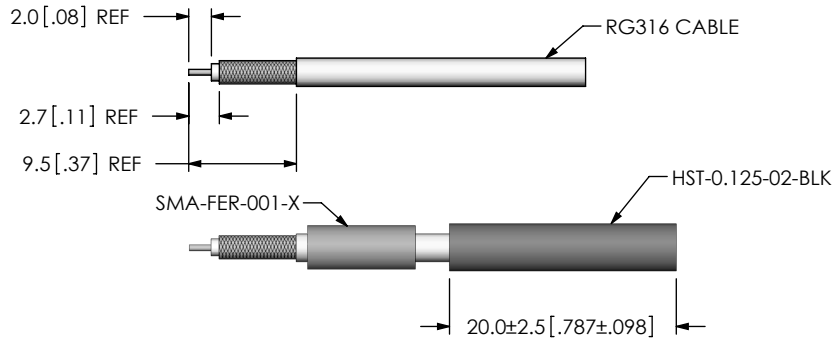


520 PARK EAST BLVD, NEW ALBANY, IN 47150
 PHONE: 812-944-6733 FAX: 812-948-5047
 e-Mail: info@SAMTEC.com code: 55322

DESCRIPTION: SMA 50 OHM, ST PANEL MOUNT JACK FOR RG316

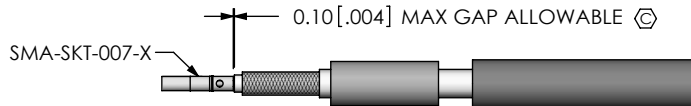
DWG. NO. SMA-J-C4-XX-ST-PN1

BY: ALVIN W 08/05/2010 SHEET 2 OF 3

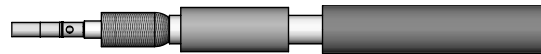


STRIP AND TIN INNER CONDUCTOR

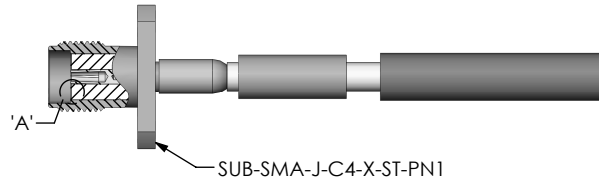
ADD HEAT SHRINK TUBE AND FERRULE



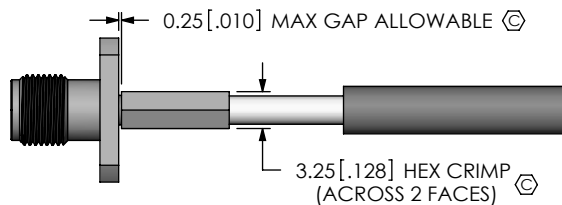
SOLDER SIGNAL PIN



FLARE SHIELD

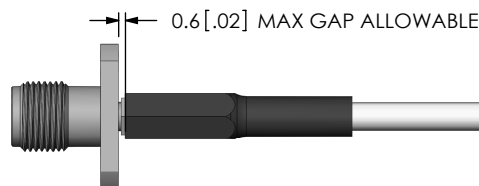


ADD SUB-SMA-J-C4-X-ST-PN1

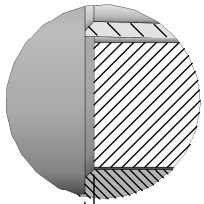


CRIMP FERRULE

(USE RF CRIMP HAND TOOL # CAT-HT-126667-21 OR EQUIVALENT)



APPLY HEAT SHRINK TUBING



DETAIL 'A'
SCALE 12:1

F:\DWG\MISC\MKTG\SMA-J-C4-XX-ST-PN1-MKT.SLDDRW

PROPRIETARY NOTE

THIS DOCUMENT CONTAINS INFORMATION CONFIDENTIAL AND PROPRIETARY TO SAMTEC, INC. AND SHALL NOT BE REPRODUCED OR TRANSFERRED TO OTHER DOCUMENTS OR DISCLOSED TO OTHERS OR USED FOR ANY PURPOSE OTHER THAN THAT WHICH IT WAS OBTAINED WITHOUT THE EXPRESSED WRITTEN CONSENT OF SAMTEC, INC.

DO NOT SCALE DRAWING

SHEET SCALE: 3:2



520 PARK EAST BLVD, NEW ALBANY, IN 47150
PHONE: 812-944-6733 FAX: 812-948-5047
e-Mail: info@SAMTEC.com code: 55322

DESCRIPTION:
SMA 50 OHM, ST PANEL MOUNT JACK FOR RG316

DWG. NO. SMA-J-C4-XX-ST-PN1

BY: ALVIN W 08/05/2010 SHEET 3 OF 3