

Pb THIS PRODUCT MANUFACTURED WITH LEAD-FREE PROCESSING

DESIGNED & DIMENSIONED IN MILLIMETERS [INCHES]

DO NOT SCALE FROM THIS PRINT

TABLE 1		
ITEM	COMPONENT	-H
1	NUT	SMB5-NUT-001-F
2	LOCK WASHER	SMB-LWAS-001-F
3	SUB-ASSEMBLY	SUB-SMB5-J-C-F-ST-BH1
4	PIN	SMB5-PIN-002-H
5	FERRULE	MCX-FER-002-F

SMB5-J-C-X-ST-BH1

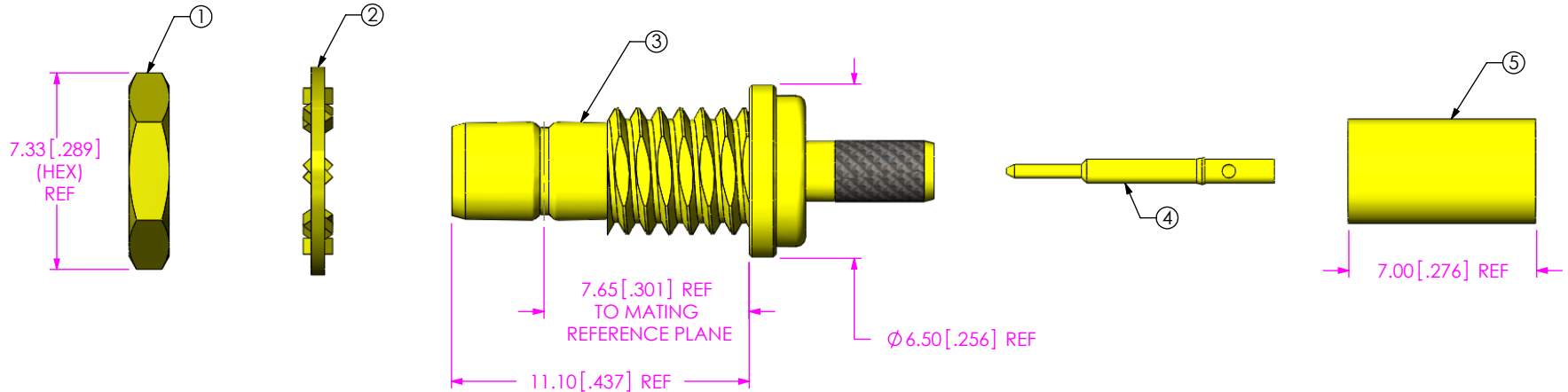
GENDER
-J: JACK

TYPE
-C: CABLE

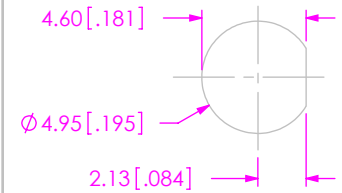
TERMINATION
-BH1: BULKHEAD (RG174 OR RG316)

ORIENTATION
-ST: STRAIGHT

PLATING
-H: HEAVY GOLD
30μ" GOLD CENTER CONTACT,
3μ" GOLD OUTER CONTACT (SEE TABLE 1)



RECOMMENDED MOUNTING HOLE
2.70 [.106] MAX PANEL THICKNESS



NOTES:

1. REPRESENTS A CRITICAL DIMENSION.
2. NOTE DELETED.
3. NOTE DELETED.
4. NOTE DELETED.
5. PRODUCT TO BE PACKAGED PER PACKAGING STANDARD CO-HD-WI-3040-M.
6. NOTE DELETED.
7. NOTE DELETED.
8. NOTE DELETED.

UNLESS OTHERWISE SPECIFIED, DIMENSIONS ARE IN MILLIMETERS [INCHES]. TOLERANCES ARE:

DECIMALS ANGLES
.X: ±0.3 [.01] 5°
.XX: ±0.13 [.005]
.XXX: ±0.051 [.0020]

PROPRIETARY NOTE

THIS DOCUMENT CONTAINS INFORMATION CONFIDENTIAL AND PROPRIETARY TO SAMTEC, INC. AND SHALL NOT BE REPRODUCED OR TRANSFERRED TO OTHER DOCUMENTS OR DISCLOSED TO OTHERS OR USED FOR ANY PURPOSE OTHER THAN THAT WHICH IT WAS OBTAINED WITHOUT THE EXPRESSED WRITTEN CONSENT OF SAMTEC, INC.

MATERIAL: DO NOT SCALE DRAWING SHEET SCALE: 4:1
SHELL, FERRULE, NUT, WASHER: BRASS
CONTACT: BRASS
DIELECTRIC: PTFE



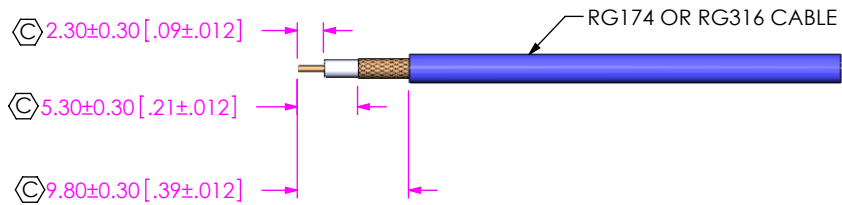
520 PARK EAST BLVD., NEW ALBANY, IN 47150
PHONE: 812-944-6733 FAX: 812-948-5047
e-Mail info@SAMTEC.com code 55322

DESCRIPTION: SMB5 STRAIGHT JACK ASSEMBLY

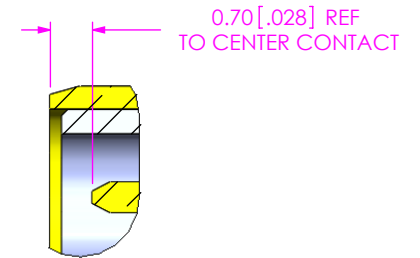
DWG. NO. SMB5-J-C-X-ST-BH1

BY: G.HERMAN 03/17/2008 SHEET 1 OF 2

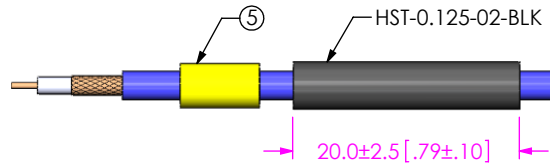
REVISION K



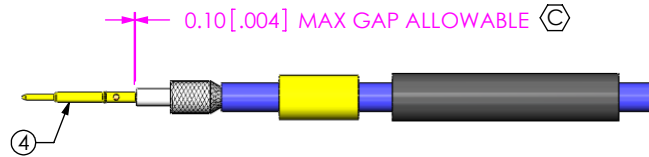
IN PROCESS 1
STRIP AND TIN
INNER CONDUCTOR



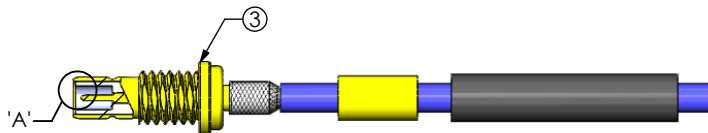
DETAIL 'A'
SCALE 8:1



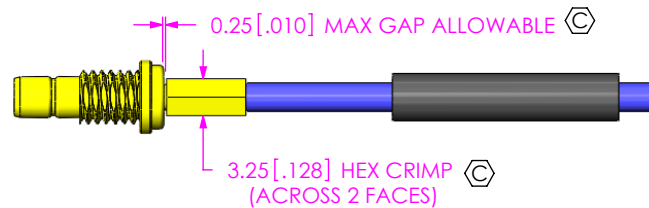
IN-PROCESS 2
ADD HEAT SHRINK
TUBE & FERRULE



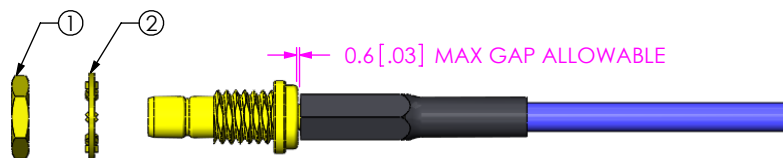
IN-PROCESS 3
SOLDER SIGNAL PIN



IN-PROCESS 4
ADD SUB ASSEMBLY



IN-PROCESS 5
CRIMP FERRULE
(USE CRIMP HAND TOOL
#CAT-HT-126667-21
OR EQUIVALENT)
(USE .128" HEX DIE)



IN-PROCESS 6
APPLY HEAT
SHRINK TUBING

F:\DWG\MISC\MKTG\SMB5-J-C-X-ST-BH1-MKT.SLDDRW

PROPRIETARY NOTE
THIS DOCUMENT CONTAINS INFORMATION
CONFIDENTIAL AND PROPRIETARY TO
SAMTEC, INC. AND SHALL NOT BE REPRODUCED
OR TRANSFERRED TO OTHER DOCUMENTS OR
DISCLOSED TO OTHERS OR USED FOR ANY
PURPOSE OTHER THAN THAT WHICH IT WAS
OBTAINED WITHOUT THE EXPRESSED WRITTEN
CONSENT OF SAMTEC, INC.

samtec
520 PARK EAST BLVD, NEW ALBANY, IN 47150
PHONE: 812-944-6733 FAX: 812-948-5047
e-Mail info@SAMTEC.com code 55322

DO NOT SCALE DRAWING

SHEET SCALE: 3:2

DESCRIPTION:
SMB5 STRAIGHT JACK ASSEMBLY

DWG. NO.
SMB5-J-C-X-ST-BH1

BY: G.HERMAN 03/17/2008 SHEET 2 OF 2