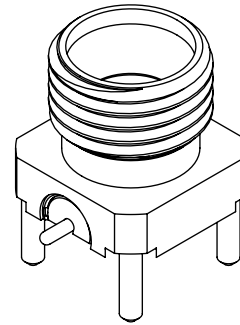


DESIGNED AND DIMENSIONED IN INCHES[MILLIMETERS]
ALL DIMENSIONS REFERENCE EXCEPT AS SHOWN

DO NOT
SCALE FROM
THIS PRINT



SMPMT-PX-P-XX-ST-MT-X

OPTION
-1

GENDER
-PF: FULL DETENT
-PS: SMOOTH BORE

TERMINATION
-MT: MIXED TECHNOLOGY

TYPE
-P: PCB

ORIENTATION
-ST: STRAIGHT

FINISH
-EG: 50µ" HEAVY GOLD CENTER CONTACT,
10µ" GOLD OUTER BODY

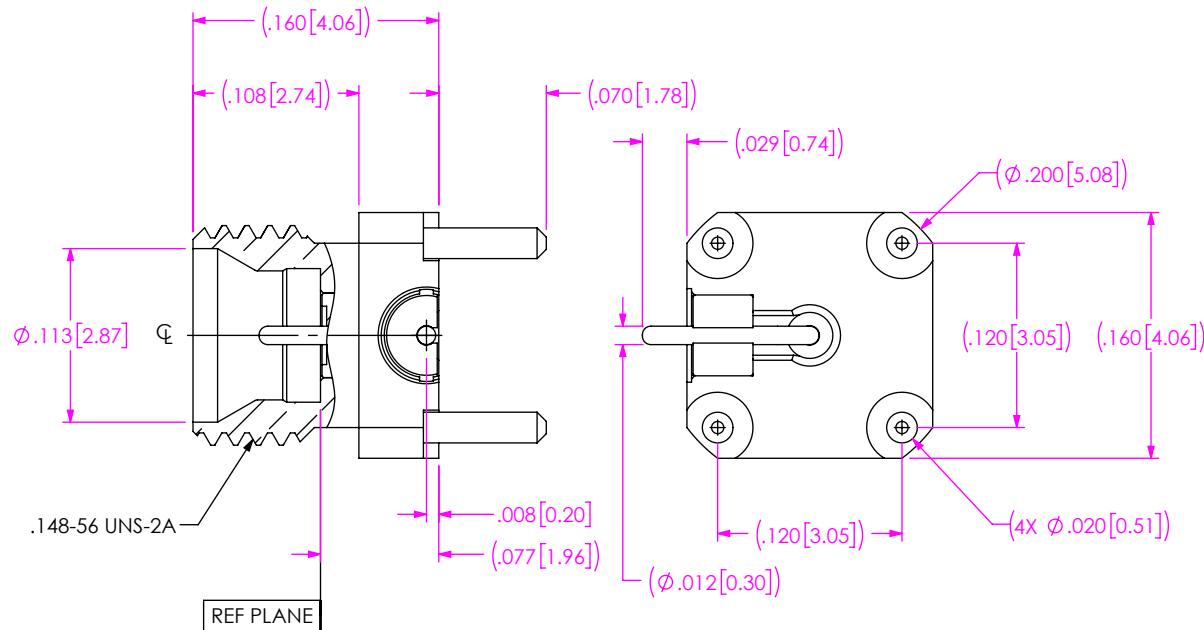
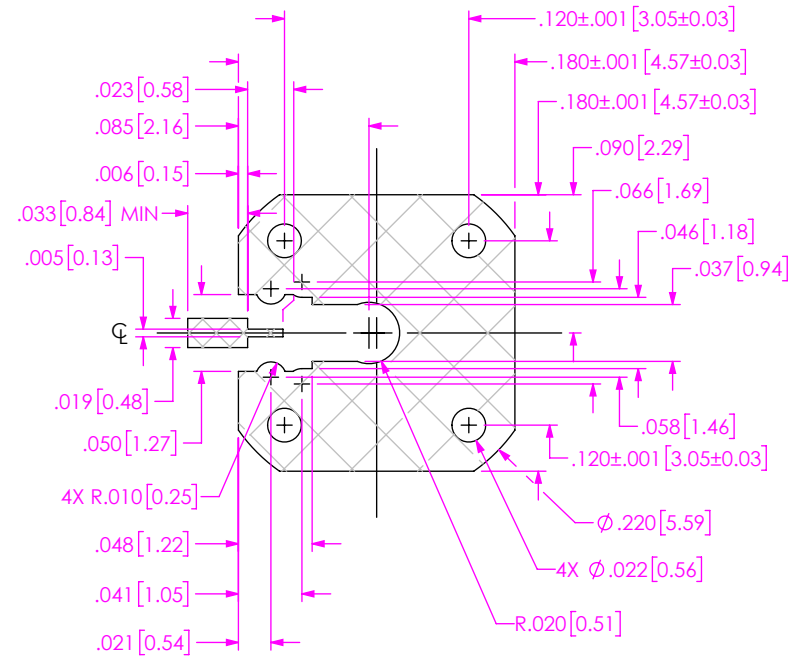


FIG 1
SMPMT-PF-P-XX-ST-MT-X SHOWN



RECOMMENDED FOOTPRINT
(SEE NOTE 3)

NOTES:

1. RECOMMENDED MATING TORQUE 20 - 24 IN-OZ.
2. FULL DETENT INTERFACE CONFIGURATION I.A.W. MIL-STD-348, FIG. 328-2
3. THIS IS A GENERAL FOOTPRINT AND IS NOT OPTIMIZED FOR ELECTRICAL PERFORMANCE, CONTACT SIG@SAMTEC.COM FOR ASSISTANCE WITH ELECTRICAL LAYOUT.

PROPRIETARY NOTE
THIS DOCUMENT CONTAINS CONFIDENTIAL AND PROPRIETARY INFORMATION AND ALL DESIGN, MANUFACTURING, REPRODUCTION, USE, PATENT RIGHTS AND SALES RIGHTS ARE EXPRESSLY RESERVED BY SAMTEC, INC. THIS DOCUMENT SHALL NOT BE DISCLOSED, IN WHOLE OR PART, TO ANY UNAUTHORIZED PERSON OR ENTITY NOR REPRODUCED, TRANSFERRED OR INCORPORATED IN ANY OTHER PROJECT IN ANY MANNER WITHOUT THE EXPRESS WRITTEN CONSENT OF SAMTEC, INC.



520 PARK EAST BLVD, NEW ALBANY, IN 47150
PHONE: 812-944-6733 FAX: 812-948-5047
e-Mail info@SAMTEC.com code 55322

DO NOT SCALE DRAWING
SHEET SCALE: 8:1

DESCRIPTION: SMPM THREADED PLUG MIXED TECHNOLOGY.

MATERIAL:
BODY: GOLD PLATED BRASS ALLOY
SOCKET CONTACT: GOLD PLATED BeCu ALLOY
INSULATOR: VICTREX POLYMER

DWG. NO. SMPMT-PX-P-XX-ST-MT-X

BY: ERIC 0 11/13/2023 SHEET 1 OF 2

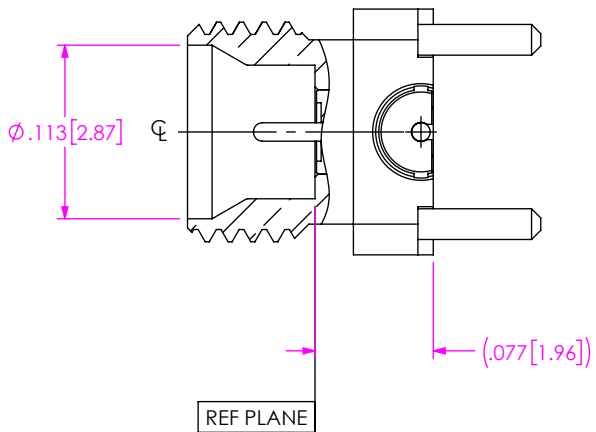
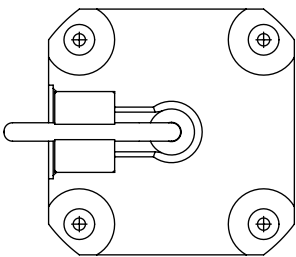
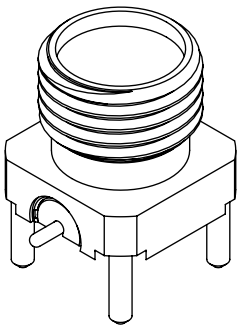
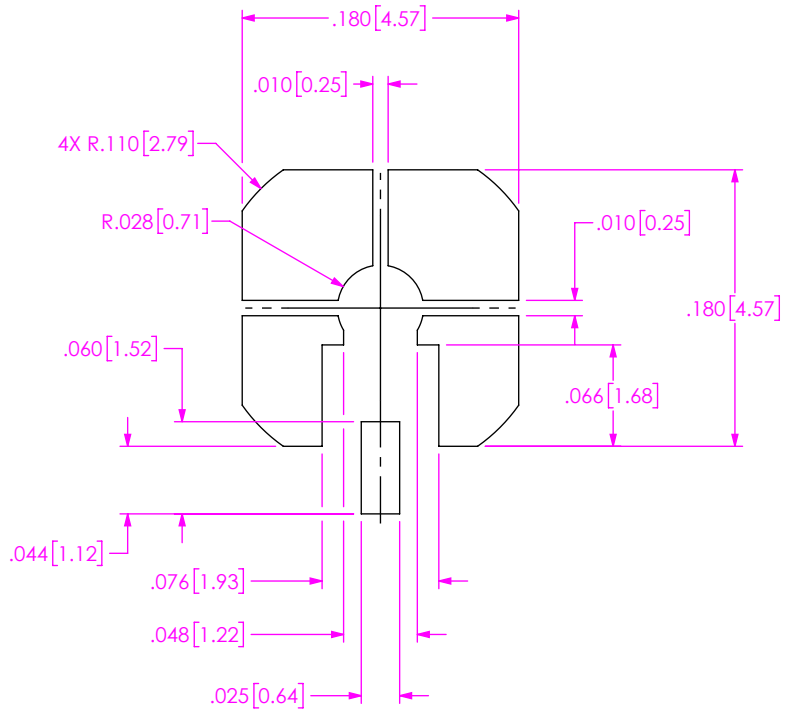



FIG 2
SMPMT-PS-P-XX-ST-MT-X SHOWN
(SAME AS FIG 1, EXCEPT AS SHOWN)



RECOMMENDED STENCIL APERTURE LAYOUT

- NOTES:
- RECOMMENDED STENCIL THICKNESS = .005".

<p>PROPRIETARY NOTE THIS DOCUMENT CONTAINS CONFIDENTIAL AND PROPRIETARY INFORMATION AND ALL DESIGN, MANUFACTURING, REPRODUCTION, USE, PATENT RIGHTS AND SALES RIGHTS ARE EXPRESSLY RESERVED BY SAMTEC, INC. THIS DOCUMENT SHALL NOT BE DISCLOSED, IN WHOLE OR PART, TO ANY UNAUTHORIZED PERSON OR ENTITY NOR REPRODUCED, TRANSFERRED OR INCORPORATED IN ANY OTHER PROJECT IN ANY MANNER WITHOUT THE EXPRESS WRITTEN CONSENT OF SAMTEC, INC.</p>	 520 PARK EAST BLVD, NEW ALBANY, IN 47150 PHONE: 812-944-6733 FAX: 812-948-5047 e-Mail info@SAMTEC.com code 55322
<p>DO NOT SCALE DRAWING</p> <p>SHEET SCALE: 8:1</p>	<p>DESCRIPTION: SMPM THREADED PLUG MIXED TECHNOLOGY.</p> <p>DWG. NO. SMPMT-PX-P-XX-ST-MT-X</p> <p>BY: ERIC 0 11/13/2023 SHEET 2 OF 2</p>