

**THIS PRODUCT MANUFACTURED WITH LEAD-FREE PROCESSING**

**DESIGNED & DIMENSIONED IN MILLIMETERS [INCHES]**

**SSMB-P-C-XX-RA-CA1**

GENDER  
-P: PLUG

TERMINATION  
-CA1: RG174/RG316 CABLE

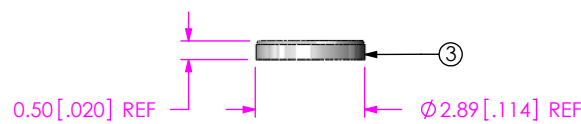
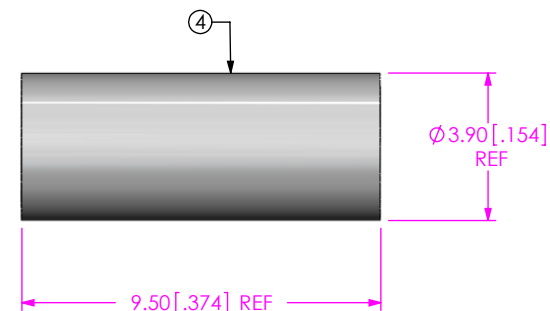
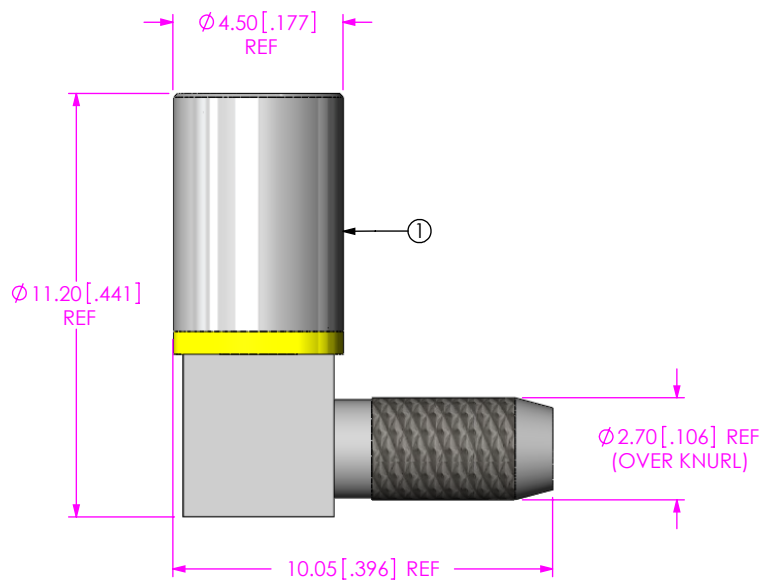
TYPE  
-C: CABLE

ORIENTATION  
-RA: RIGHT ANGLE

PLATING SPECIFICATION  
-HG: HEAVY GOLD / GOLD  
30µ" Au / 50µ" Ni MIN ON PIN  
10µ" Au / 50µ" Ni MIN ON OUTER CONTACT  
100µ" Ni MIN ON OUTER CONTACT  
-GF: GOLD / FLASH GOLD  
10µ" Au / 50µ" Ni MIN ON PIN  
3µ" Au / 50µ" Ni MIN ON OUTER CONTACT  
100µ" Ni MIN ON ALL OTHER  
(SEE TABLE 1)


DO NOT SCALE FROM THIS PRINT

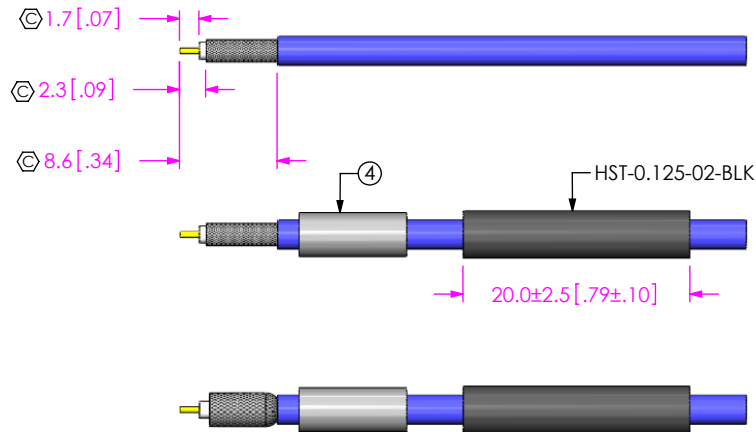
ITEM	COMPONENT	-HG	-GF
1	SUB ASSEMBLY	SUB-SSMB-P-C-HG-RA-CA1	SUB-SSMB-P-C-GF-RA-CA1
2	INSULATOR	MMCX-INS-001	
3	CAP	MMCX-CAP-001-N	
4	FERRULE	SMA-FER-001-N	



NOTES:

- ① REPRESENTS A CRITICAL DIMENSION.
- PRODUCT TO BE PACKAGED PER PACKING STANDARD CO-HD-WI-3040-M.
- INSULATOR, CAP AND FERRULE TO BE PACKAGED SEPARATELY.

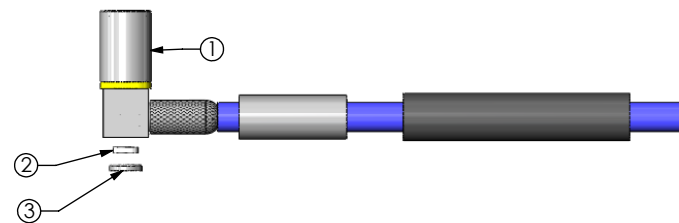
<p>UNLESS OTHERWISE SPECIFIED, DIMENSIONS ARE IN MILLIMETERS [INCHES].</p> <p>TOLERANCES ARE:</p> <p>DECIMALS ANGLES</p> <p>.X: ±0.3 [.01] 5°</p> <p>.XX: ±0.13 [.005]</p> <p>.XXX: ±0.051 [.0020]</p>	<p>PROPRIETARY NOTE</p> <p>THIS DOCUMENT CONTAINS INFORMATION CONFIDENTIAL AND PROPRIETARY TO SAMTEC, INC. AND SHALL NOT BE REPRODUCED OR TRANSFERRED TO OTHER DOCUMENTS OR DISCLOSED TO OTHERS OR USED FOR ANY PURPOSE OTHER THAN THAT WHICH IT WAS OBTAINED WITHOUT THE EXPRESSED WRITTEN CONSENT OF SAMTEC, INC.</p>	 <p>520 PARK EAST BLVD, NEW ALBANY, IN 47150 PHONE: 812-944-6733 FAX: 812-948-5047 e-Mail info@SAMTEC.com code 55322</p>
<p>MATERIAL: DO NOT SCALE DRAWING SHEET SCALE: 5:1</p> <p>BODY, FERRULE, SLEEVE, CAP: BRASS</p> <p>SHELL: BeCu</p> <p>CONTACT: BeCu</p> <p>DIELECTRIC: PTFE</p>		<p>DESCRIPTION: SSMB 50 OHM R/A PLUG FOR RG174 OR RG316</p> <p>DWG. NO. SSMB-P-C-XX-RA-CA1</p> <p>BY: ALVIN W 11/03/2010 SHEET 1 OF 2</p>



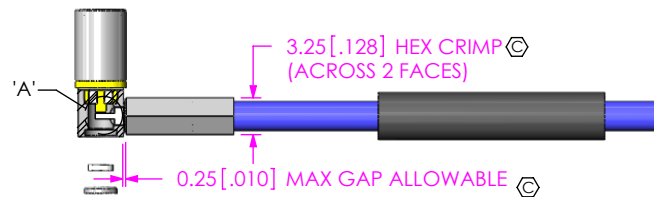
IN PROCESS 1  
STRIP AND TIN INNER CONDUCTOR

IN PROCESS 2  
ADD HEAT SHRINK TUBE AND FERRULE

IN PROCESS 3  
FLARE SHIELD

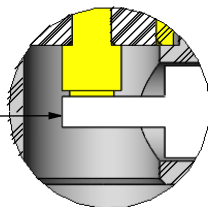


IN PROCESS 4  
ADD SUB-SSMB-P-C-XX-RA-CA1



IN PROCESS 5  
CRIMP FERRULE & SOLDER SIGNAL SOCKET  
(USE RF CRIMP HAND TOOL # CAT-HT-126667-21 OR EQUIVALENT)  
(USE .128" HEX DIE)

CABLE CENTER CONDUCTOR SHOULD NOT PROTRUDE OUTSIDE CONTACT CUP AFTER FERRULE IS CRIMPED



DETAIL 'A'  
SCALE 8:1

IN PROCESS 6  
INSERT INSULATOR AND CAP



IN PROCESS 7  
APPLY HEAT SHRINK TUBING

F:\DWG\MISC\MKTG\SSMB-P-C-XX-RA-CA1-MKT.SLDDRW

PROPRIETARY NOTE

THIS DOCUMENT CONTAINS INFORMATION CONFIDENTIAL AND PROPRIETARY TO SAMTEC, INC. AND SHALL NOT BE REPRODUCED OR TRANSFERRED TO OTHER DOCUMENTS OR DISCLOSED TO OTHERS OR USED FOR ANY PURPOSE OTHER THAN THAT WHICH IT WAS OBTAINED WITHOUT THE EXPRESSED WRITTEN CONSENT OF SAMTEC, INC.

DO NOT SCALE DRAWING

SHEET SCALE: 3:2



520 PARK EAST BLVD, NEW ALBANY, IN 47150  
PHONE: 812-944-6733 FAX: 812-948-5047  
e-Mail: info@SAMTEC.com code 55322

DESCRIPTION:  
SSMB 50 OHM R/A PLUG FOR RG174 OR RG316

DWG. NO.  
SSMB-P-C-XX-RA-CA1

BY: ALVIN W 11/03/2010 SHEET 2 OF 2