

DO NOT SCALE FROM THIS PRINT

DESIGNED & DIMENSIONED IN MILLIMETERS [INCHES]

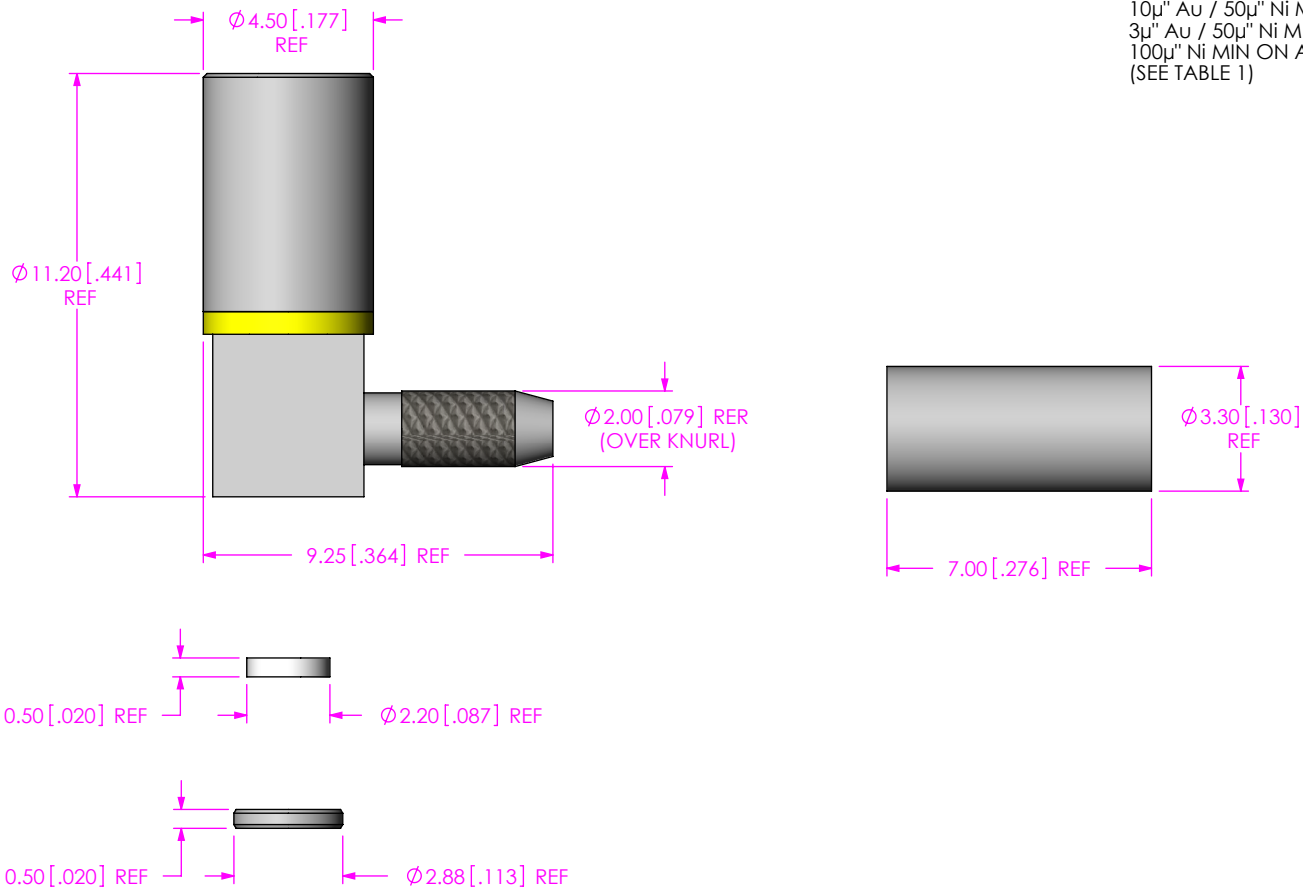
TABLE 1			
ITEM	COMPONENT	-HG	-GF
1	SUB ASSEMBLY	SUB-SSMB-P-C-HG-RA-CA2	SUB-SSMB-P-C-GF-RA-CA2
2	INSULATOR	MMCX-INS-001	
3	CAP	MMCX-CAP-001-N	
4	FERRULE	MCX-FER-005-N	

SSMB-P-C-XX-RA-CA2

GENDER  
-P: PLUG  
TERMINATION  
-CA2: RG178 CABLE

TYPE  
-C: CABLE  
ORIENTATION  
-RA: RIGHT ANGLE

PLATING SPECIFICATION  
-HG: HEAVY GOLD / GOLD  
30µ" Au / 50µ" Ni MIN ON PIN  
10µ" Au / 50µ" Ni MIN ON OUTER CONTACT  
100µ" Ni MIN ON ALL OTHER  
-GF: GOLD / FLASH GOLD  
10µ" Au / 50µ" Ni MIN ON PIN  
3µ" Au / 50µ" Ni MIN ON OUTER CONTACT  
100µ" Ni MIN ON ALL OTHER  
(SEE TABLE 1)



C:\EnterpriseVault\DWG\MISC\MKTG\SSMB-P-C-XX-RA-CA2-MKT.SLDDRW

UNLESS OTHERWISE SPECIFIED, DIMENSIONS ARE IN MILLIMETERS [INCHES].  
TOLERANCES ARE:  
DECIMALS ANGLES  
.X:  $\pm 0.3$  [.01] 5°  
.XX:  $\pm 0.13$  [.005]  
.XXX:  $\pm 0.051$  [.0020]

PROPRIETARY NOTE  
THIS DOCUMENT CONTAINS INFORMATION CONFIDENTIAL AND PROPRIETARY TO SAMTEC, INC. AND SHALL NOT BE REPRODUCED OR TRANSFERRED TO OTHER DOCUMENTS OR DISCLOSED TO OTHERS OR USED FOR ANY PURPOSE OTHER THAN THAT WHICH IT WAS OBTAINED WITHOUT THE EXPRESSED WRITTEN CONSENT OF SAMTEC, INC.

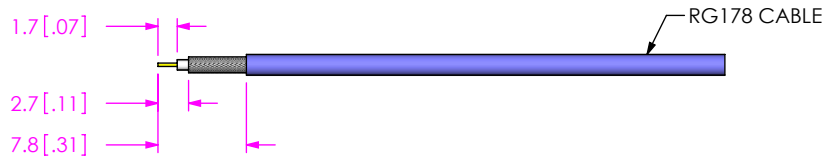


520 PARK EAST BLVD, NEW ALBANY, IN 47150  
PHONE: 812-944-6733 FAX: 812-948-5047  
e-Mail: info@SAMTEC.com code: 55322

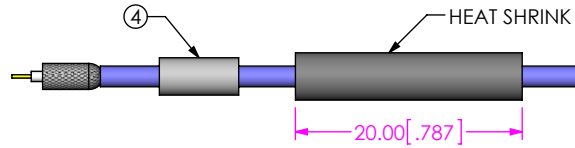
- NOTES:  
1. NOTE DELETED.  
2. PRODUCT TO BE BULK PACKAGED PER PACKING STANDARD CO-RF-WI-3040-M.  
3. NOTE DELETED.

MATERIAL: DO NOT SCALE DRAWING SHEET SCALE: 5:1  
BODY, FERRULE, SLEEVE, CAP: BRASS  
SHELL: BeCu  
CONTACT: BeCu  
DIELECTRIC: PTFE

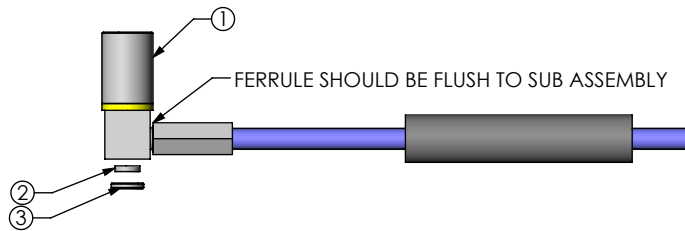
DESCRIPTION:  
50 OHM SSMB RIGTH ANGLE PLUG FOR RG178  
DWG. NO.  
**SSMB-P-C-XX-RA-CA2**  
BY: ALVIN W 11/03/2010 SHEET 1 OF 2



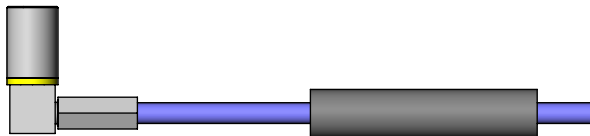
IN PROCESS 1  
STRIP CABLE AND TIN INNER CONDUCTOR



IN PROCESS 2  
ADD HEAT SHRINK TUBE AND FERRULE  
FLARE SHIELD



IN PROCESS 3  
ADD SUB-SSMB-P-C-XX-RA-CA2  
CRIMP FERRULE AND SOLDER SIGNAL SOCKET  
(USE RF CRIMP HAND TOOL # CAT-RF-FER-001 AND 0.110 DIE SIZE)



IN PROCESS 4  
INSERT INSULATOR AND CAP



IN PROCESS 5  
APPLY HEAT SHRINK TUBING

C:\EnterpriseVault\DWG\MISC\MKTG\SSMB-P-C-XX-RA-CA2-MKT.SLDDRW

**PROPRIETARY NOTE**

THIS DOCUMENT CONTAINS INFORMATION  
CONFIDENTIAL AND PROPRIETARY TO  
SAMTEC, INC. AND SHALL NOT BE REPRODUCED  
OR TRANSFERRED TO OTHER DOCUMENTS OR  
DISCLOSED TO OTHERS OR USED FOR ANY  
PURPOSE OTHER THAN THAT WHICH IT WAS  
OBTAINED WITHOUT THE EXPRESSED WRITTEN  
CONSENT OF SAMTEC, INC.

DO NOT SCALE DRAWING

SHEET SCALE: 3:2



520 PARK EAST BLVD, NEW ALBANY, IN 47150  
PHONE: 812-944-6733 FAX: 812-948-5047  
e-Mail: info@SAMTEC.com code: 55322

DESCRIPTION:  
50 OHM SSMB RIGTH ANGLE PLUG FOR RG178

DWG. NO.  
**SSMB-P-C-XX-RA-CA2**

BY: ALVIN W 11/03/2010 SHEET 2 OF 2