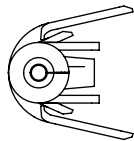


DO NOT SCALE FROM THIS PRINT



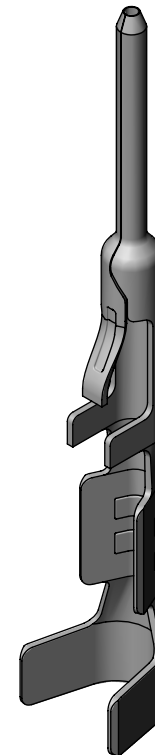
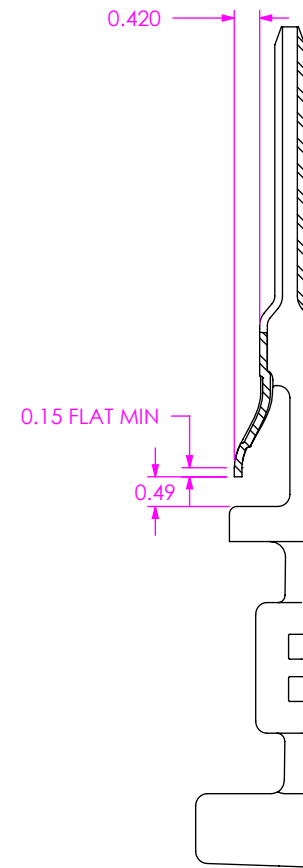
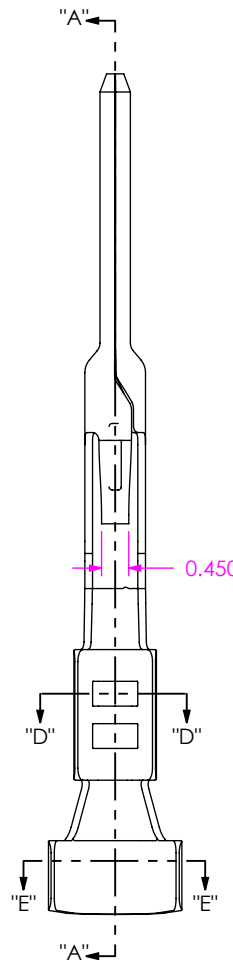
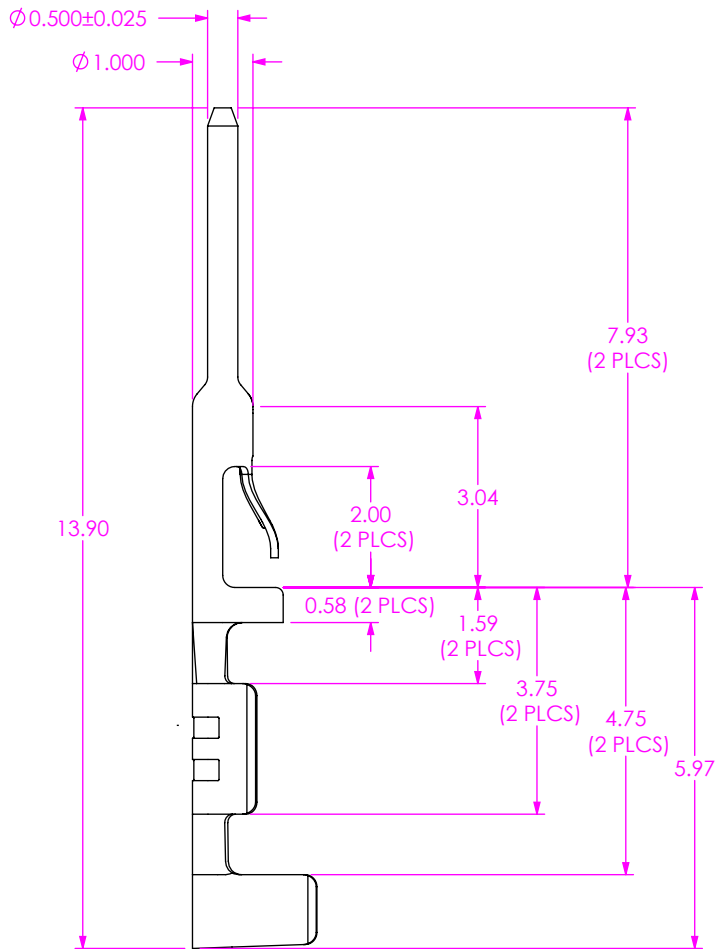
ALL DIMENSIONS ARE REFERENCE
(SEE T-1M82-XXXX-XX FOR CONTROLLING PRINT)

T1M82-X-XXXX-01-XX

SUPPLIED
-L: LOOSE
-R: REEL

PLATING SPECIFICATION
-L: LIGHT SELECTIVE
-S: SELECTIVE
-F: FLASH SELECTIVE

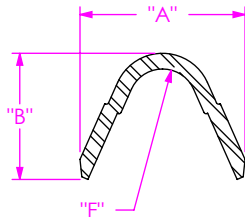
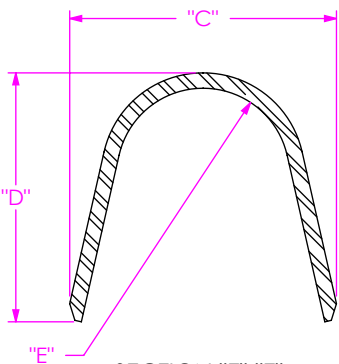
LEAD STYLE
-2426: 24-26 AWG
-2830: 28-30 AWG



"N" MAX
(TAB LENGTH)
(SEE TABLE 2, SHT 1)

"M" MAX
(VESTIGE ALLOWANCE)
(SEE TABLE 2, SHT 1)

SECTION "A"-"A"



SECTION "D"-"D"
SCALE 16:1

"M"	.025
"N"	.191

- NOTES:
1. REPRESENTS A CRITICAL DIMENSION.
 2. REFER TO CRIMP SPECIFICATION PRINT FOR CABLE AND CRIMP PARAMETERS.

UNLESS OTHERWISE SPECIFIED,
DIMENSIONS ARE IN MILLIMETERS.
TOLERANCES ARE:
DECIMALS ANGLES
X.X: ± 0.3 2°
X.XX: ± 0.05
X.XXX: ± 0.038

PROPRIETARY NOTE
THIS DOCUMENT CONTAINS CONFIDENTIAL AND PROPRIETARY INFORMATION AND ALL DESIGN, MANUFACTURING, REPRODUCTION, USE, PATENT RIGHTS AND SALES RIGHTS ARE EXPRESSLY RESERVED BY SAMTEC, INC. THIS DOCUMENT SHALL NOT BE DISCLOSED, IN WHOLE OR PART, TO ANY UNAUTHORIZED PERSON OR ENTITY NOR REPRODUCED, TRANSFERRED OR INCORPORATED IN ANY OTHER PROJECT IN ANY MANNER WITHOUT THE EXPRESS WRITTEN CONSENT OF SAMTEC, INC.

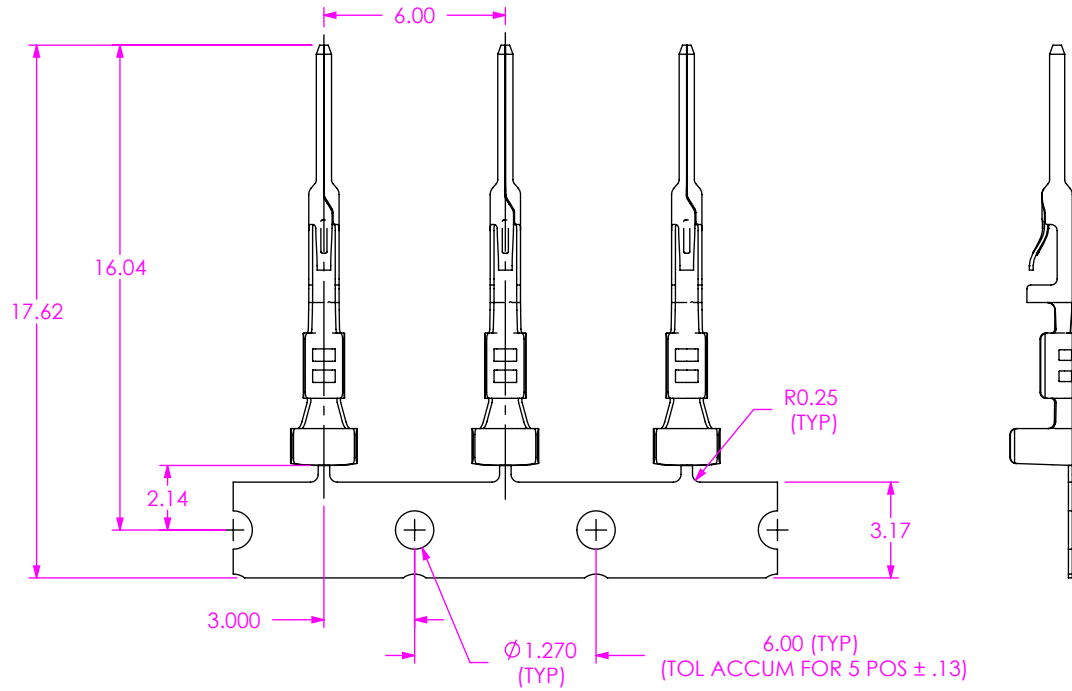
MATERIAL: DO NOT SCALE DRAWING SHEET SCALE: 8:1
PHOS BRONZE, ALLOY 521, HARD TEMPER
THICKNESS: 0.127 ± 0.008

samtec
520 PARK EAST BLVD, NEW ALBANY, IN 47150
PHONE: 812-944-6733 FAX: 812-948-5047
e-Mail: info@SAMTEC.com code: 55322

DESCRIPTION: 2mm C.L. DISCRETE WIRE TERMINAL
DWG. NO. T1M82-X-XXXX-01-XX
BY: J. BORGELT 08-09-2010 SHEET 1 OF 2

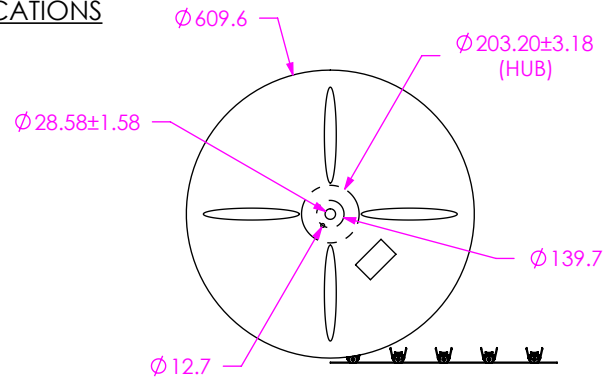
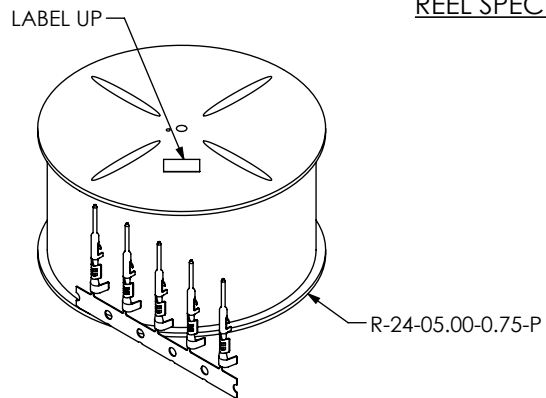
REVISION F

TABLE 1						
LEAD STYLE	"A"	"B"	"C"	"D"	"E"	"F"
-2426	1.18	1.15	1.92	2.13	2.54	4.92
-2830	0.86	0.87	1.45	1.45	1.98	3.28



CARRIER SPECIFICATIONS

REEL SPECIFICATIONS



UNWINDING DIRECTION

- NOTES:
1. PLATED T-1M82 PARTS ARE TO BE UNWOUND, THEN REWOUND AND COUNTED, 17,000 ± 15 PCS, POSITIONED AS SHOWN ON SAMTEC REEL WITH VIEWPORTS, LABELED T1M82 WITH APPROPRIATE PLATING CALL OUT AND LABEL PLACED AS SHOWN.
 2. MAXIMUM NO OF SPLICES PER REEL: 2. SPLICES ARE NOT TO BE CONNECTED. NUMBER OF SPLICES TO BE MARKED ON EACH REEL.
 3. REELED PARTS TO BE INTERLEAVED WITH PAPER BETWEEN EACH LAYER OF PARTS. ONE SPLICE IN INTERLEAF ALLOWED PER REEL. SECURELY CONNECT INTERLEAF SPLICE.
 4. OUTER WRAP SHALL RECEIVE RB-24-0.75-P PROTECTITVE REEL BAND.

PROPRIETARY NOTE
 THIS DOCUMENT CONTAINS CONFIDENTIAL AND PROPRIETARY INFORMATION AND ALL DESIGN, MANUFACTURING, REPRODUCTION, USE, PATENT RIGHTS AND SALES RIGHTS ARE EXPRESSLY RESERVED BY SAMTEC, INC. THIS DOCUMENT SHALL NOT BE DISCLOSED, IN WHOLE OR PART, TO ANY UNAUTHORIZED PERSON OR ENTITY NOR REPRODUCED, TRANSFERRED OR INCORPORATED IN ANY OTHER PROJECT IN ANY MANNER WITHOUT THE EXPRESS WRITTEN CONSENT OF SAMTEC, INC.

samtec
 520 PARK EAST BLVD, NEW ALBANY, IN 47150
 PHONE: 812-944-6733 FAX: 812-948-5047
 e-Mail: info@SAMTEC.com code: 55322

DO NOT SCALE DRAWING

SHEET SCALE: 8:1

DESCRIPTION: 2mm C.L. DISCRETE WIRE TERMINAL

DWG. NO. T1M82-X-XXXX-01-XX

BY: J. BORGELT 08-09-2010 SHEET 2 OF 2