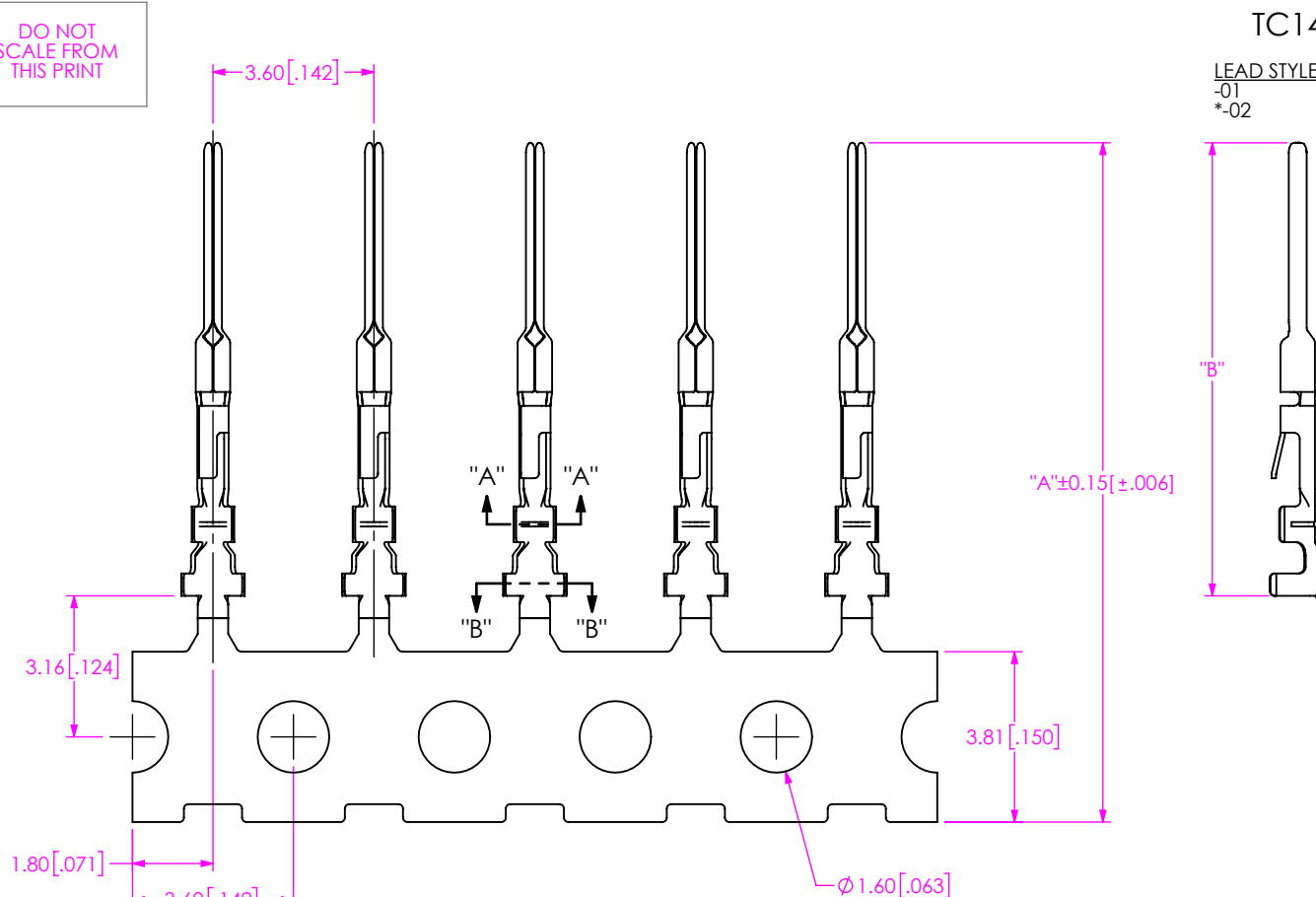


DO NOT
SCALE FROM
THIS PRINTFIG 1
TC145-XX-X-X WITH CARRIER SHOWN

NOTES:

1. PLATED XT-1M145 PARTS TO BE PULLED, PLATING OPTION CONFIRMED, POSITIONED AS SHOWN ON SAMTEC REEL WITH VIEWPORTS, LABELED TC145-XX-X-X WITH APPROPRIATE PLATING CALLOUT AND LABEL PLACED AS SHOWN.
2. MAXIMUM NO OF SPLICES PER REEL:
-R: 2
-M: 1
3. SPLICES ARE NOT TO BE CONNECTED.
4. NUMBER OF SPLICES TO BE MARKED ON EACH REEL.
5. REELED PARTS TO BE INTERLEAVED WITH PAPER BETWEEN EACH LAYER OF PARTS.
6. ALLOWABLE INTERLEAF SPLICES PER REEL:
-R: 1
-M: 1
7. SECURELY CONNECT INTERLEAF SPLICE.
8. OUTER WRAP FOR PROTECTIVE REEL BAND AS BELOW:
-R: RB-24-1.25-P
-M: CRT-032-0.018
9. DUE TO PLATING REQUIREMENTS CONTACT SAMPLES MAY BE REMOVED INTERMITTINGLY FROM THE CARRIER RESULTING IN SMALL GAPS BUT DOES NOT AFFECT FINAL COUNT.
10. QTY PER REEL:
-R: 25,000 +300/-0
-M: 1,000-5,000 +300/-0
-B: 35 PCS
11. SEE XT-1M145-XX-X FOR CONTROLLING PRINT.

TC145-XX-X-X

LEAD STYLE

-01
*-02

PACKAGING SPECIFICATION

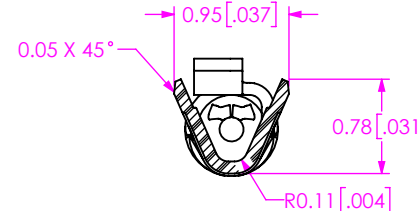
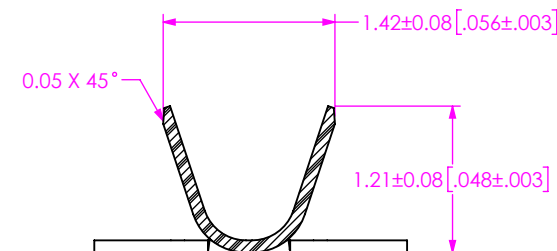
-R: REEL (25,000 +300/-0 PCS PER REEL)
-M: MINI REEL (1,000-5,000 +300/-0 PCS PER REEL)
-B: BUBBLE BAG (35 TERMINALS)

PLATING

-H: 30μ Au IN CONTACT AREA,
FLASH Au ON TAIL

(*=NOT TOOLED)

TABLE 1		
OPTIONS	"A"	"B"
-01	15.19 [0.598]	10.13 [0.399]
-02	15.93 [0.627]	10.87 [0.428]

SECTION "A"-"A"
SCALE 16 : 1SECTION "B"-"B"
SCALE 16 : 1

* PROPRIETARY NOTE *

THIS DOCUMENT CONTAINS CONFIDENTIAL AND PROPRIETARY INFORMATION AND ALL DESIGN, MANUFACTURING, REPRODUCTION, USE, PATENT RIGHTS AND SALES RIGHTS ARE EXPRESSLY RESERVED BY SAMTEC, INC. THIS DOCUMENT SHALL NOT BE DISCLOSED, IN WHOLE OR PART, TO ANY UNAUTHORIZED PERSON OR ENTITY NOR REPRODUCED, TRANSFERRED OR INCORPORATED IN ANY OTHER PROJECT IN ANY MANNER WITHOUT THE EXPRESS WRITTEN CONSENT OF SAMTEC, INC.

MATERIAL:
COPPER ALLOY

DO NOT SCALE DRAWING
SHEET SCALE: 1:2

DESCRIPTION:

1MM PITCH TERMINAL

DWG. NO.

TC145-XX-X-X

BY: G DETHY

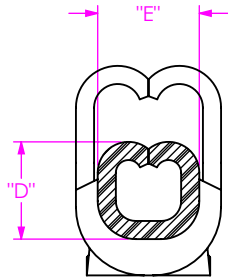
04/26/2021

SHEET 1 OF 3

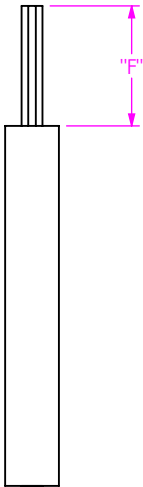
samtec

520 PARK EAST BLVD, NEW ALBANY, IN 47150
PHONE: 812-944-6733 FAX: 812-948-5047
e-Mail: info@SAMTEC.com code 55322

FIG 4
RECOMMENDED PROCESSING



WIRE CRIMP
SCALE 24 : 1




INSULATION STRIP LENGTH

TABLE 3						
CONTACT/ TERMINAL	AWG	CABLE	"D"	"E"	"F"	PULL FORCE MIN (LBS)
XT-1M145-XX-X	28	DWCT-28-01-TC	0.406 [0.0160]	0.704 [0.0277]	1.40 [0.055]	2.0
	30	DWCT-30-01-TC	0.356 [0.0140]	0.704 [0.0277]	1.40 [0.055]	1.5

PROPRIETARY NOTE

THIS DOCUMENT CONTAINS CONFIDENTIAL AND PROPRIETARY INFORMATION AND ALL DESIGN, MANUFACTURING, REPRODUCTION, USE, PATENT RIGHTS AND SALES RIGHTS ARE EXPRESSLY RESERVED BY SAMTEC, INC. THIS DOCUMENT SHALL NOT BE DISCLOSED, IN WHOLE OR PART, TO ANY UNAUTHORIZED PERSON OR ENTITY NOR REPRODUCED, TRANSFERRED OR INCORPORATED IN ANY OTHER PROJECT IN ANY MANNER WITHOUT THE EXPRESS WRITTEN CONSENT OF SAMTEC, INC.



520 PARK EAST BLVD, NEW ALBANY, IN 47150
PHONE: 812-944-6733 FAX: 812-948-5047
e-Mail info@SAMTEC.com code 55322

DO NOT SCALE DRAWING
SHEET SCALE: 5:1

MATERIAL:
INSULATOR: LCP
CONTACT OR TERMINAL:
SHIELD: PHOS BRONZE

DESCRIPTION:
1MM PITCH TERMINAL

DWG. NO.
TC145-XX-X-X

BY: G DETHY 04/26/2021 SHEET 2 OF 3

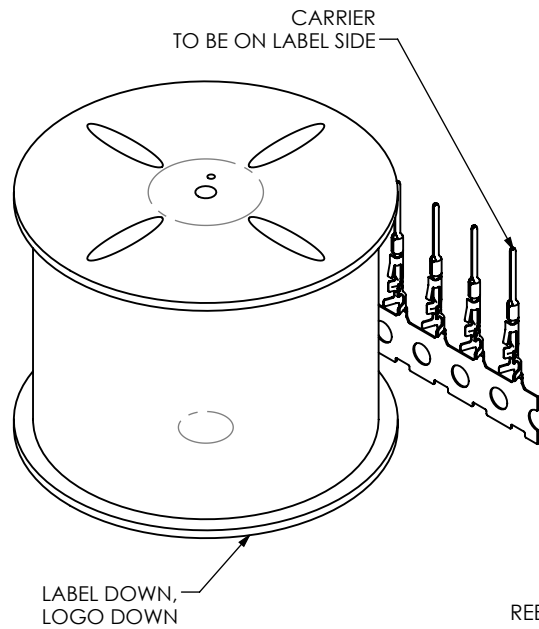


FIG 2
REEL SPECIFICATION

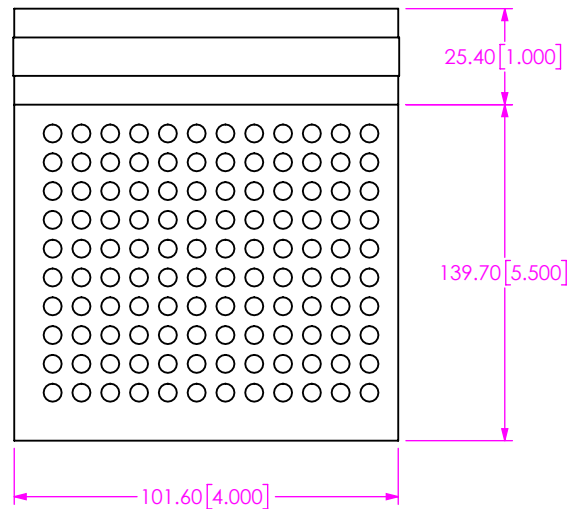
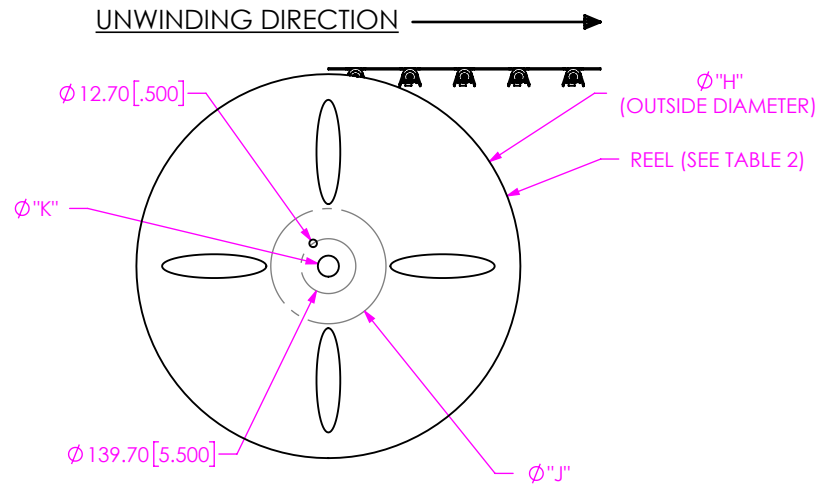


FIG 3
BUBBLE BAG SPECIFICATION

TABLE 2				
SUPPLIED	PACKAGING PART NUMBER	"H"	"J"	"K"
-R	R-24-08.00-1.00-P	609.60 [24.000]	254.00 [10.000]	28.58 [1.125]
-M	MR-13.0-4.00-24	330.20 [13.000]	101.60 [4.000]	13.00 [0.512]
-B	ASBBLT4x5.5	N/A	N/A	N/A

<p>• PROPRIETARY NOTE</p> <p>THIS DOCUMENT CONTAINS CONFIDENTIAL AND PROPRIETARY INFORMATION AND ALL DESIGN, MANUFACTURING, REPRODUCTION, USE, PATENT RIGHTS AND SALES RIGHTS ARE EXPRESSLY RESERVED BY SAMTEC, INC. THIS DOCUMENT SHALL NOT BE DISCLOSED, IN WHOLE OR PART, TO ANY UNAUTHORIZED PERSON OR ENTITY NOR REPRODUCED, TRANSFERRED OR INCORPORATED IN ANY OTHER PROJECT IN ANY MANNER WITHOUT THE EXPRESS WRITTEN CONSENT OF SAMTEC, INC.</p>	
<p>SHEET SCALE: 5:1 DO NOT SCALE DRAWING</p>	

<p>samtec</p> <p>520 PARK EAST BLVD, NEW ALBANY, IN 47150 PHONE: 812-944-6733 FAX: 812-948-5047 e-Mail info@SAMTEC.com code 55322</p>	
<p>DESCRIPTION: 1MM PITCH TERMINAL</p>	
<p>DWG. NO. TC145-XX-X-X</p>	
BY: G DETHY	04/26/2021
SHEET 3 OF 3	