

DO NOT SCALE FROM THIS PRINT

- NOTES:
1. C REPRESENTS A CRITICAL DIMENSION.
 2. HANDLE TO BE 1" X 3/4", 4 FLUTE.
 3. PRESS ITEM 1 (SOLDERED WITH ITEM 2) INTO HANDLE TO DIMENSION SHOWN.
 4. SHARP CORNERS CAN BE BROKEN WITH A 0.05 RADIUS OR 0.05 x 45° CHAMFER MAX, UNLESS OTHERWISE SPECIFIED.
 5. FABRICATED PARTS MUST BE FREE OF SCRATCHES, TOOL MARKS, BURRS, ETC AND NEED TO BE 100% INSPECTED.

DESIGNED & DIMENSIONED IN MILLIMETERS

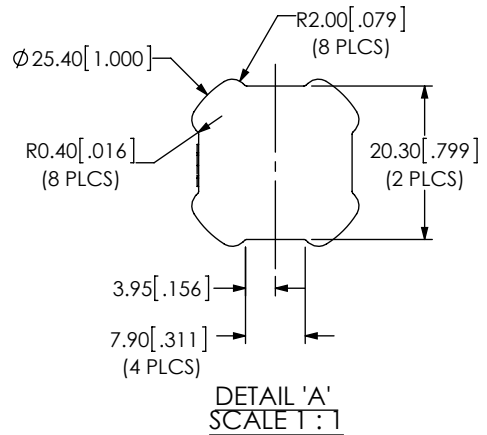
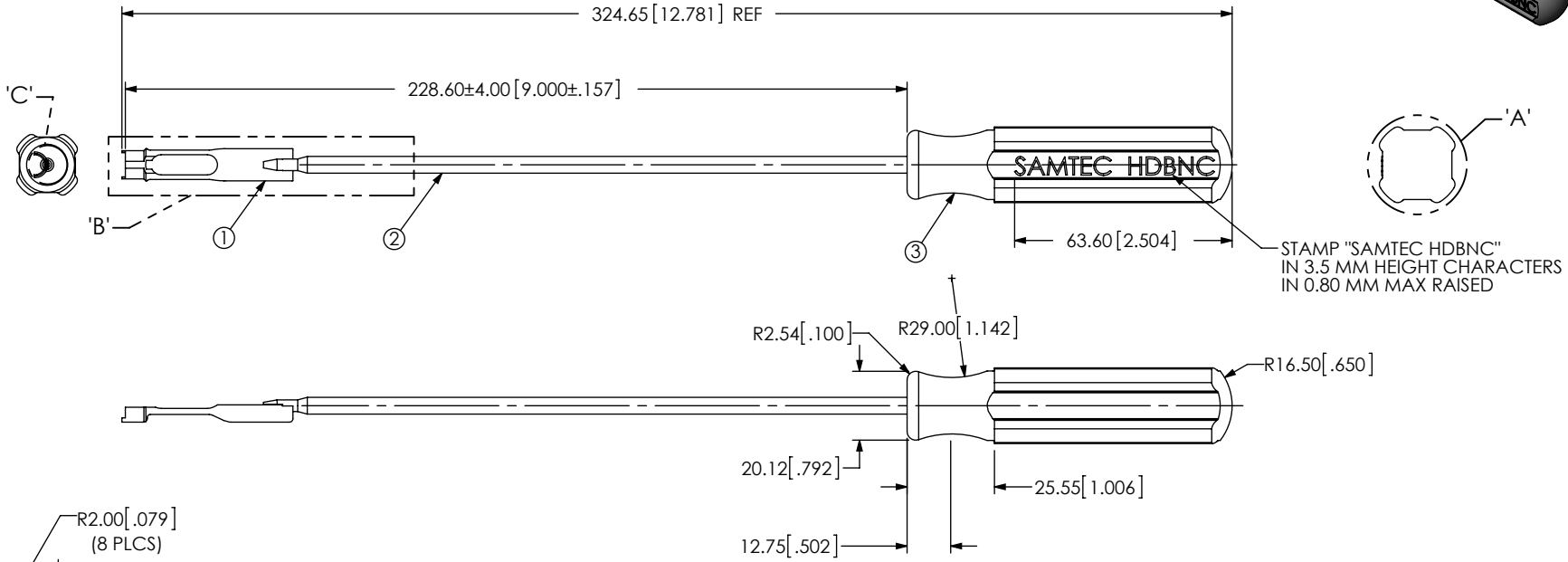
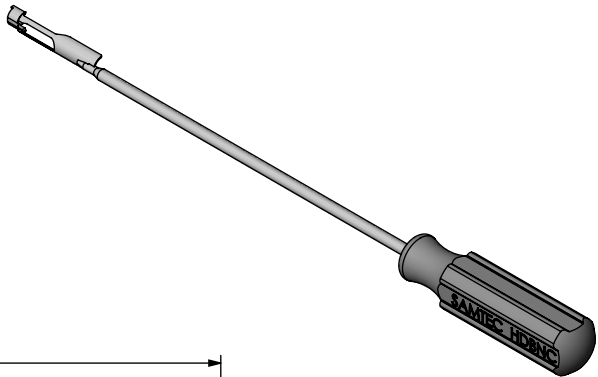


FIG 1 HANDLE TOOL VIEW

F:\DWG\MISC\mktg\TOOL-HDBNC-01-MKT.SLDDRW

UNLESS OTHERWISE SPECIFIED, DIMENSIONS ARE IN MILLIMETERS. TOLERANCES ARE:
 DECIMALS ANGLES
 X.X: ±0.3 [.01] 5°
 X.XX: ±0.13 [.005]
 X.XXX: ±0.051 [.0020]

PROPRIETARY NOTE
 THIS DOCUMENT CONTAINS INFORMATION CONFIDENTIAL AND PROPRIETARY TO SAMTEC, INC. AND SHALL NOT BE REPRODUCED OR TRANSFERRED TO OTHER DOCUMENTS OR DISCLOSED TO OTHERS OR USED FOR ANY PURPOSE OTHER THAN THAT WHICH IT WAS OBTAINED WITHOUT THE EXPRESSED WRITTEN CONSENT OF SAMTEC, INC.



520 PARK EAST BLVD., NEW ALBANY, IN 47150
 PHONE: 812-944-6733 FAX: 812-948-5047
 e-Mail: info@SAMTEC.com code 55322

MATERIAL: DO NOT SCALE DRAWING SHEET SCALE: 1:2

DESCRIPTION: HDBNC TOOL FOR INSTALLATION / REMOVAL

DWG. NO. **TOOL-HDBNC-01**

BY: JERRY SU 06/01/2012 SHEET 1 OF 2

ITEM NO.	PART NUMBER	QUANTITY	FINISH	MATERIAL
1	TOOL-HDBNC-01-TIP	1.0000	PASSIVATED	SUS 420
2	TOOL-HDBNC-01-ROD	1.0000	PASSIVATED	STAINLESS STEEL 303
3	TOOL-HDBNC-01-HANDLE	1.0000	ORANGE	POM

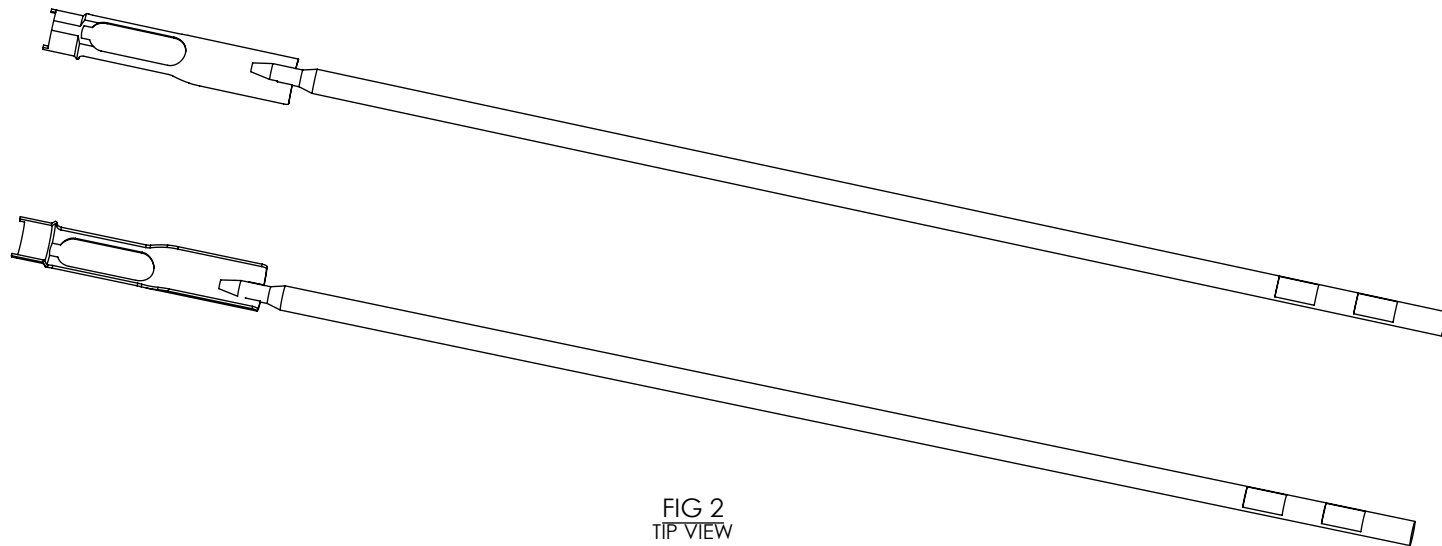
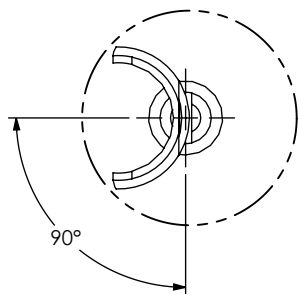
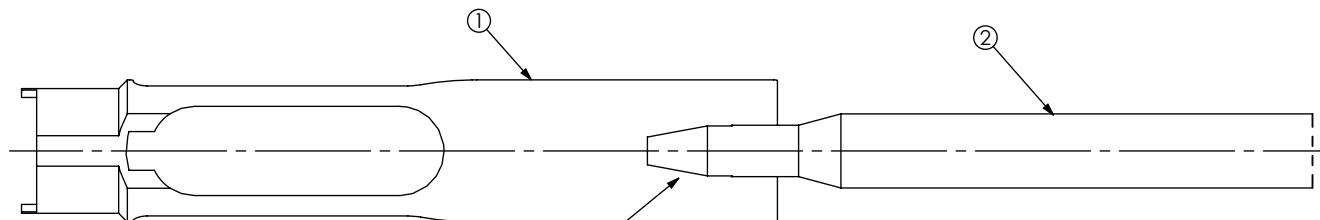


FIG 2
TIP VIEW



DETAIL 'C'
SCALE 2:1



USING HIGH TEMP SILVER SOLDER
AND MUST BE APPLIED TO BOTH SIDES
WIRE ITEMS 1 AND 2 COME IN CONTACT
(SEE NOTE 1, 2, 3 & 4)

DETAIL 'B'
SCALE 2:1

NOTES:

1. SLIDE TOOL ITEM 1 INTO GROOVE OF SHAFT, ITEM 2 UNTIL BOTTOMED.
2. SILVER SOLDER AS SHOWN, SOLDER JOINT MUST BE SMOOTH AND NOT HAVE A EXCESSIVE AMOUNT OF SOLDER.
3. SOLDER JOINT MUST WITHSTAND A 75 LB. MIN. AXIAL PULL.
4. TOOL ITEM 1 AND SHAFT ITEM 2 MUST BE WITHIN 2° AS SHOWN AFTER BRAZING.

PROPRIETARY NOTE

THIS DOCUMENT CONTAINS INFORMATION
CONFIDENTIAL AND PROPRIETARY TO
SAMTEC, INC. AND SHALL NOT BE REPRODUCED
OR TRANSFERRED TO OTHER DOCUMENTS OR
DISCLOSED TO OTHERS OR USED FOR ANY
PURPOSE OTHER THAN THAT WHICH IT WAS
OBTAINED WITHOUT THE EXPRESSED WRITTEN
CONSENT OF SAMTEC, INC.

SHEET SCALE: 1:2

samtec

520 PARK EAST BLVD, NEW ALBANY, IN 47150
PHONE: 812-944-6733 FAX: 812-948-5047
e-Mail info@SAMTEC.com code 55322

DESCRIPTION:
HDBNC TOOL FOR INSTALLATION / REMOVAL

DWG. NO. **TOOL-HDBNC-01**

BY: JERRY SU 06/01/2012 SHEET 2 OF 2