

DESIGNED & DIMENSIONED IN MILLIMETERS[INCHES]

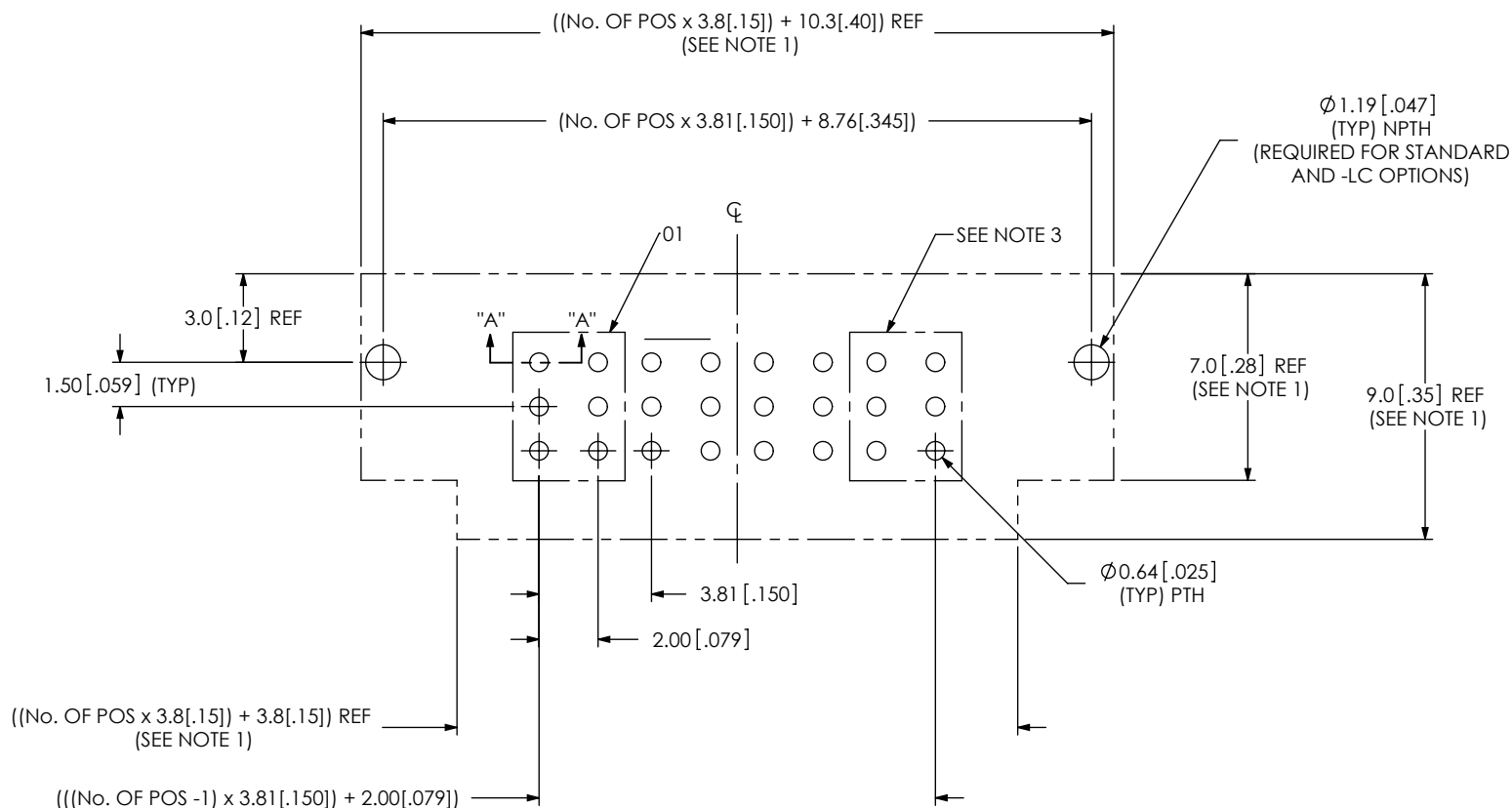


FIG. 1
(UPT-04-XX.X-XX-X-V-XX SHOWN)

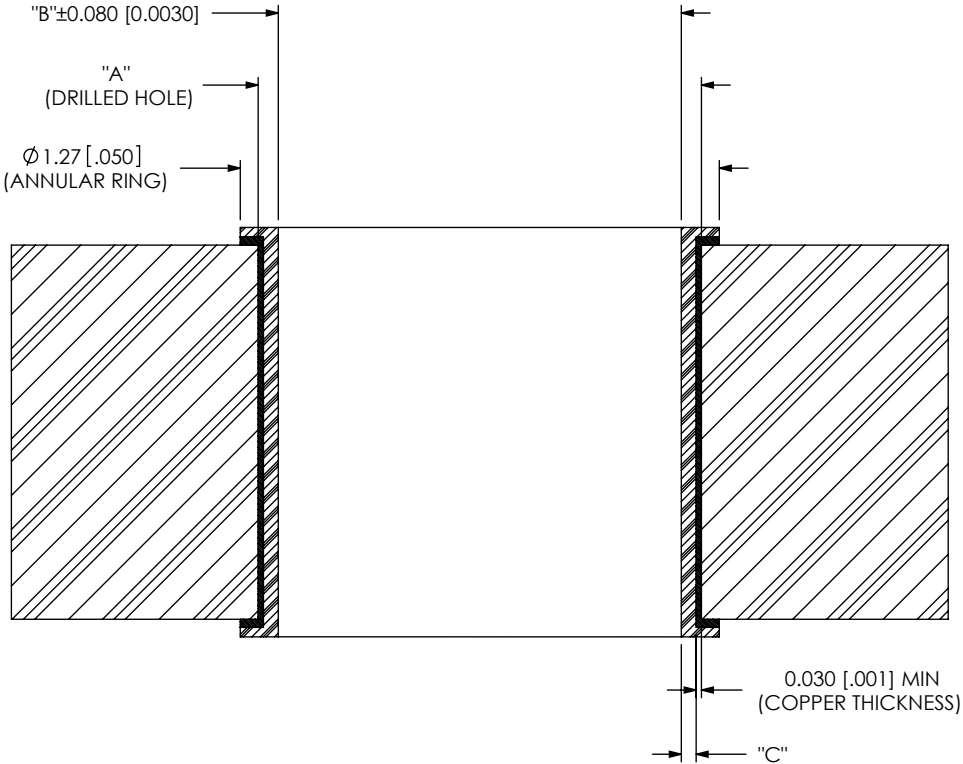
NOTES:

1. CONNECTOR ENVELOPE DIMENSIONS. OTHER COMPONENTS PLACED ON PCB SHALL AVOID THIS ZONE.
2. ALL DIMENSIONS SYMMETRIC ABOUT THE CENTERLINE.
3. EACH GROUP HOLDS ONE POWER PIN
4. VIAS FOR PRESS-FIT PRODUCT MUST CONFORM TO SPECIFICATIONS SHOWN IN SECTION "A-A"

PROPRIETARY NOTE

THIS DOCUMENT CONTAINS INFORMATION CONFIDENTIAL AND PROPRIETARY TO SAMTEC, INC. AND SHALL NOT BE REPRODUCED OR TRANSFERRED TO OTHER DOCUMENTS OR DISCLOSED TO OTHERS OR USED FOR ANY PURPOSE OTHER THAN THAT WHICH IT WAS OBTAINED WITHOUT THE EXPRESSED WRITTEN CONSENT OF SAMTEC, INC.

520 PARK EAST BLVD, NEW ALBANY, IN 47150
PHONE: 812-944-6733 FAX: 812-948-5047
e-Mail: info@SAMTEC.com code: 55322



SECTION "A"- "A"
(SEE NOTE 4)

TABLE 1			
PLATING	"A" +/- .001	"B" +/- .003	"C"
HOT AIR LEVEL TIN	0.74 [0.029]	0.64 [0.025]	0.015 [.006] MAX TIN
ELECTROLESS GOLD OVER NICKEL	0.74 [0.029]	0.64 [0.025]	.0025 - .0076 [.0001 - .0003] NICKEL / .00005 - .00020 (.000002 - .000008) GOLD
ORGANIC SURFACE PROTECTANT COPPER	0.71 [0.028]	0.64 [0.025]	NA

D

PROPRIETARY NOTE
THIS DOCUMENT CONTAINS INFORMATION
CONFIDENTIAL AND PROPRIETARY TO
SAMTEC, INC. AND SHALL NOT BE REPRODUCED
OR TRANSFERRED TO OTHER DOCUMENTS OR
DISCLOSED TO OTHERS OR USED FOR ANY
PURPOSE OTHER THAN THAT WHICH IT WAS
OBTAINED WITHOUT THE EXPRESSED WRITTEN
CONSENT OF SAMTEC, INC.

DO NOT SCALE DRAWING

SHEET SCALE: 4:1



520 PARK EAST BLVD, NEW ALBANY, IN 47150
PHONE: 812-944-6733 FAX: 812-948-5047
e-Mail: info@SAMTEC.com code: 55322

DESCRIPTION:
MICRO POWER TERMINAL FOOTPRINT

DWG. NO.
UPT-XX-XX.X-XX-X-V-XX-FOOTPRINT

BY: B RAY 08/25/2008 SHEET 2 OF 2