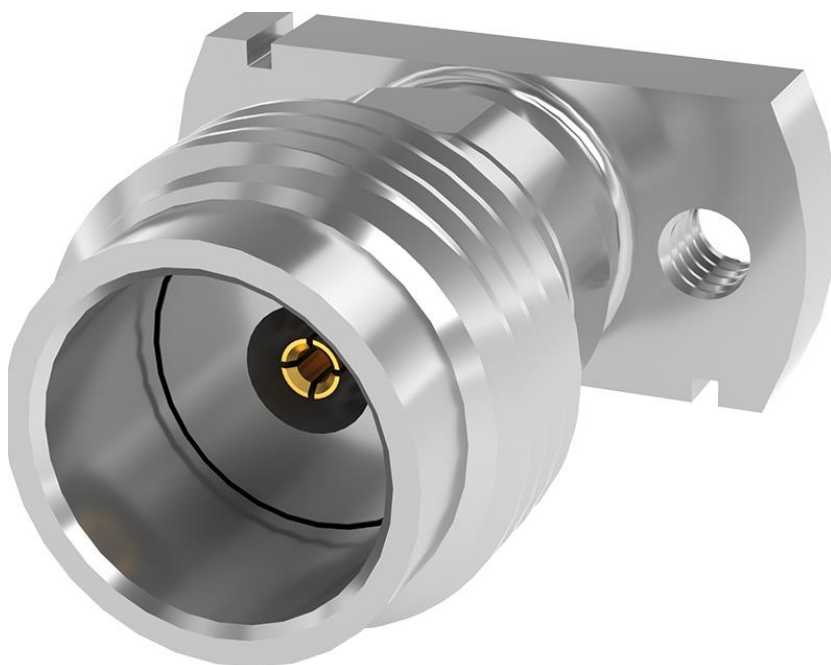


Series: 1.85mm Jack, PCB Compression Mount, 50 Ω , Stripline/Microstrip



185-J-P-EP-ST-XXX-X-X

PACKAGING

- BLANK: INDIVIDUALLY BAGGED
- B: FULL TRAY (QTY \geq 100)

OPTION

- 1: OPTION 1 (WITHOUT SCREWS)
- 2: OPTION 2 (FOR PCB THICKNESS .016" TO .125")
- 3: OPTION 3 (FOR PCB THICKNESS .069" TO .178")

TERMINATION

- CM: COMPRESSION MOUNT STRIPLINE
- CMM: COMPRESSION MOUNT MICROSTRIP

MATERIAL AND FINISHES

Connector part	Material	Finish
Shell	Stainless Steel	Passivated
Bushing	Stainless Steel	Passivated
Pin	Beryllium Copper	50 μ " Gold over Nickel
Insulator	Ultem 1000	N/A

Series: 1.85mm Jack, PCB Compression Mount, 50 Ω , Stripline/Microstrip

ELECTRICAL DATA

Impedance	50 Ohm
Frequency Range	DC to 67 GHz
VSWR ¹	DC to 26.5 GHz: 1.10:1 max 26.5 GHz to 40 GHz: 1.20:1 max 40 GHz to 50 GHz: 1.30:1 max 50 GHz to 67 GHz: 1.35:1 max
Insertion Loss ¹	$0.03\sqrt{F(\text{GHz})}$ dB max
LLCR - Center Contact	<6.0 m Ω
LLCR - Outer Contact	<2.0 m Ω
Dielectric Withstanding Voltage (DWV)	600 VRMS Min
Insulation Resistance	5,000 M Ω Min
Voltage Rating @ Sea Level	200 VRMS Max

¹connector only, does not include PCB launch effects

MECHANICAL DATA

Interface	I.A.W. IEC-61169-32 fig. 2	
Recommended Mating Coupler Torque	0.9-1.13 N-m (8-10 in-Lb.)	
Durability	500 Cycles minimum	
Force to Engage / Disengage	≤ 0.23 N-m (2.0 in-Lb.) Max Torque	
Center Contact Retention	17.8 N (4.0 Lb.) Minimum Axial	
Mass	Compression Mount	1.77g (0.0039 pounds)
	Compression Mount, Microstrip	1.63g (0.0035 pounds)

ENVIRONMENTAL DATA

Temperature Range	-65 to +165°C
Thermal Shock	EIA-364-32, -55 to +125°C, 100 Cycles
Vibration	EIA-364-28, Condition V-B, 2 hrs/axis
Mechanical Shock	EIA-364-27, Condition G

REFERENCED DOCUMENTS

Configuration and Features	DRAWING
Compression Mount	<u>185-J-P-EP-ST-CM-X-X</u>
Compression Mount Microstrip	<u>185-J-P-EP-ST-CMM-X-X</u>



Series: 1.85mm Jack, PCB Compression Mount, 50 Ω , Stripline/Microstrip

USE OF PRODUCT SPECIFICATION SHEET

This Product Specification Sheet ("PSS") is a brief summary of information related to the Product identified. As a summary, it should only be used for the limited purpose of considering the purchase/use of Product. This PSS is the property of Samtec, Inc. ("Samtec") and contains proprietary information of Samtec, our various licensors, or both. Samtec does not grant express or implied rights or license under any patent, copyright, trademark or other proprietary rights and the use of the PSS for building, reverse engineering or replication is strictly prohibited. By using the PSS, the user agrees to not infringe, directly or indirectly, upon any intellectual property rights of Samtec and acknowledges that Samtec, our various licensors, or both own all intellectual property therein. The PSS is presented "AS IS". While Samtec makes every effort to present excellent information, the PSS is only provided as a guideline and does not, therefore, warrant it is without error or defect or that the PSS contains all necessary and/or relevant information about the Product. The user agrees that all access and use of the PSS is at its own risk. **NO WARRANTIES EXPRESSED OR IMPLIED, INCLUDING ANY WARRANTY OF MERCHANTABILITY, FITNESS FOR A PARTICULAR PURPOSE OR OF ANY KIND WHATSOEVER ARE PROVIDED**