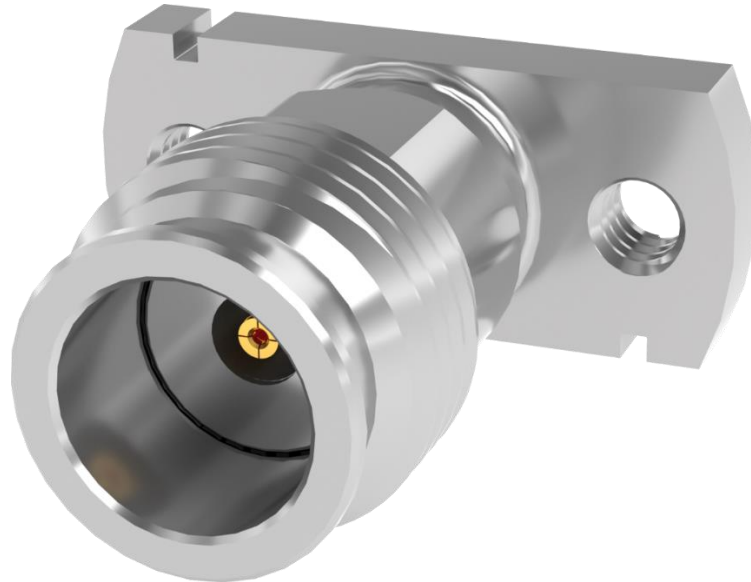


Series: 1.35mm Jack, PCB Compression Mount, 50 Ω , Stripline/Microstrip



135-J-P-VP-ST-XXX-X-X

PACKAGING

- BLANK: INDIVIDUALLY BAGGED
- B: FULL TRAY (QTY \geq 100)

OPTION

- 1: OPTION 1 (WITHOUT SCREWS)
- 2: OPTION 2 (FOR PCB THICKNESS .016" TO .125")
- 3: OPTION 3 (FOR PCB THICKNESS .069" TO .178")

TERMINATION

- CM: COMPRESSION MOUNT STRIPLINE
- CMM: COMPRESSION MOUNT MICROSTRIP

MATERIAL AND FINISHES

Connector part	Material	Finish
Shell	Stainless Steel	Passivate
Bushing	Stainless Steel	Passivate
Pin	Beryllium Copper	50 μ " Gold over Nickel
Insulator	PCTFE	N/A

Series: 1.35mm Jack, PCB Compression Mount, 50 Ω , Stripline/Microstrip

ELECTRICAL DATA

Impedance	50 Ohm
Frequency Range	DC to 90 GHz
VSWR ¹	DC to 40 GHz: 1.25:1 max 40 GHz to 80 GHz: 1.55:1 max 80 GHz to 90 GHz: 1.6:1 max
Insertion Loss ²	$0.03\sqrt{F(GHz)} \text{ dB max}$
LLCR - Center Contact	<6.0 m Ω
LLCR - Outer Contact	<2.0 m Ω
Dielectric Withstanding Voltage (DWV)	475 VRMS Min
Insulation Resistance	5,000 M Ω Min
Voltage Rating @ Sea Level	150 VRMS Max

¹ VSWR per connector when tested on Samtec multi-layer test PCB

² Single connector insertion loss only

MECHANICAL DATA

Interface	I.A.W. IEC-61169-65 Par. 3.1.2, fig. 2
Recommended Mating Coupler Torque	0.9-1.13 N-m (8-10 in-Lb.)
Durability	500 Cycles minimum
Force to Engage / Disengage	$\leq 0.23 \text{ N-m (2.0 in-Lb.) Max Torque}$
Center Contact Retention	17.8 N (4.0 Lb.) Minimum Axial
Mass	1.22g (0.0027 pounds)

ENVIRONMENTAL DATA

Temperature Range	-55 to +125°C
Thermal Shock	EIA-364-32, -55 to +125°C, 100 Cycles

REFERENCED DOCUMENTS

Configuration and Features	Drawing
Compression Mount, Stripline	135-J-P-VP-ST-CM-X-X
Compression Mount, Microstrip	135-J-P-VP-ST-CMM-X-X



Series: 1.35mm Jack, PCB Compression Mount, 50 Ω , Stripline/Microstrip

USE OF PRODUCT SPECIFICATION SHEET

This Product Specification Sheet ("PSS") is a brief summary of information related to the Product identified. As a summary, it should only be used for the limited purpose of considering the purchase/use of Product. This PSS is the property of Samtec, Inc. ("Samtec") and contains proprietary information of Samtec, our various licensors, or both. Samtec does not grant express or implied rights or license under any patent, copyright, trademark or other proprietary rights and the use of the PSS for building, reverse engineering or replication is strictly prohibited. By using the PSS, the user agrees to not infringe, directly or indirectly, upon any intellectual property rights of Samtec and acknowledges that Samtec, our various licensors, or both own all intellectual property therein. The PSS is presented "AS IS". While Samtec makes every effort to present excellent information, the PSS is only provided as a guideline and does not, therefore, warrant it is without error or defect or that the PSS contains all necessary and/or relevant information about the Product. The user agrees that all access and use of the PSS is at its own risk. **NO WARRANTIES EXPRESSED OR IMPLIED, INCLUDING ANY WARRANTY OF MERCHANTABILITY, FITNESS FOR A PARTICULAR PURPOSE OR OF ANY KIND WHATSOEVER ARE PROVIDED**