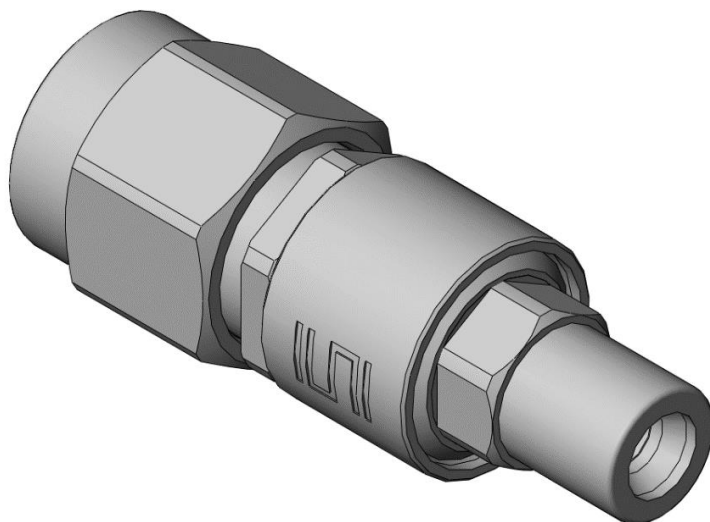


Series: Between Series Adapter, 50 Ω



Part Number:

PRFBA-292-X-SMPM-XX-S-X

ADAPTER TYPE
-BA: BETWEEN SERIES ADAPTER

END 1 SERIES
-292: 2.92mm

END 1 GENDER
-P: PLUG
-J: JACK

OPTION
-T (APPLICABLE TO
292-J-SMPM-J ONLY)

ORIENTATION
-S: STRAIGHT

END 2 GENDER
-PF: PLUG FULL DETENT
-J: JACK

END 2 SERIES
-SMPM

MATERIAL AND FINISHES

Connector part	Material	Finish
Body (2.92 mm Series/SMPM Plug Full Detent)	Stainless steel	Passivation
Body (SMPM Jack)	Beryllium Copper	Gold
Contact	Beryllium Copper	Gold
Insulator	PEI	N/A

Series: [Between Series Adapter, 50 \$\Omega\$](#)

ELECTRICAL DATA

Impedance	50 Ω
Frequency Range	DC to 40 GHz
VSWR	1.3:1 MAX
Insertion Loss	$0.06 \times \sqrt{MAX\ FREQ(GHz)}\ dB\ MAX$
Dielectric Withstanding Voltage (DWV)	500 VDC MIN
Insulation Resistance	3,000 M Ω MIN
Voltage Rating	335 VRMS MAX

MECHANICAL DATA

Interface	MIL-STD-348A
Durability	300 cycles MIN
Center Contact Retention	6 lbs. MIN

ENVIRONMENTAL DATA

Temperature Range	-40 to +125°C
-------------------	---------------

REFERENCED DOCUMENTS

Description	Drawing
2.92 mm plug to SMPM plug full detent	PRFBA-292-P-SMPM-PF-S Drawing
2.92 mm plug to SMPM jack	PRFBA-292-P-SMPM-J-S Drawing
2.92 mm jack to SMPM plug full detent	PRFBA-292-J-SMPM-PF-S Drawing
2.92 mm jack to SMPM jack	PRFBA-292-J-SMPM-J-S-1 Drawing

USE OF PRODUCT SPECIFICATION SHEET

This Product Specification Sheet (“PSS”) is a brief summary of information related to the Product identified. As a summary, it should only be used for the limited purpose of considering the purchase/use of Product. This PSS is the property of Samtec, Inc. (“Samtec”) and contains proprietary information of Samtec, our various licensors, or both. Samtec does not grant express or implied rights or license under any patent, copyright, trademark or other proprietary rights and the use of the PSS for building, reverse engineering or replication is strictly prohibited. By using the PSS, the user agrees to not infringe, directly or indirectly, upon any intellectual property rights of Samtec and acknowledges that Samtec, our various licensors, or both own all intellectual property therein. The PSS is presented “AS IS”. While Samtec makes every effort to present excellent information, the PSS is only provided as a guideline and does not, therefore, warrant it is without error or defect or that the PSS contains all necessary and/or relevant information about the Product. The user agrees that all access and use of the PSS is at its own risk. **NO WARRANTIES EXPRESSED OR IMPLIED, INCLUDING ANY WARRANTY OF MERCHANTABILITY, FITNESS FOR A PARTICULAR PURPOSE OR OF ANY KIND WHATSOEVER ARE PROVIDED.**