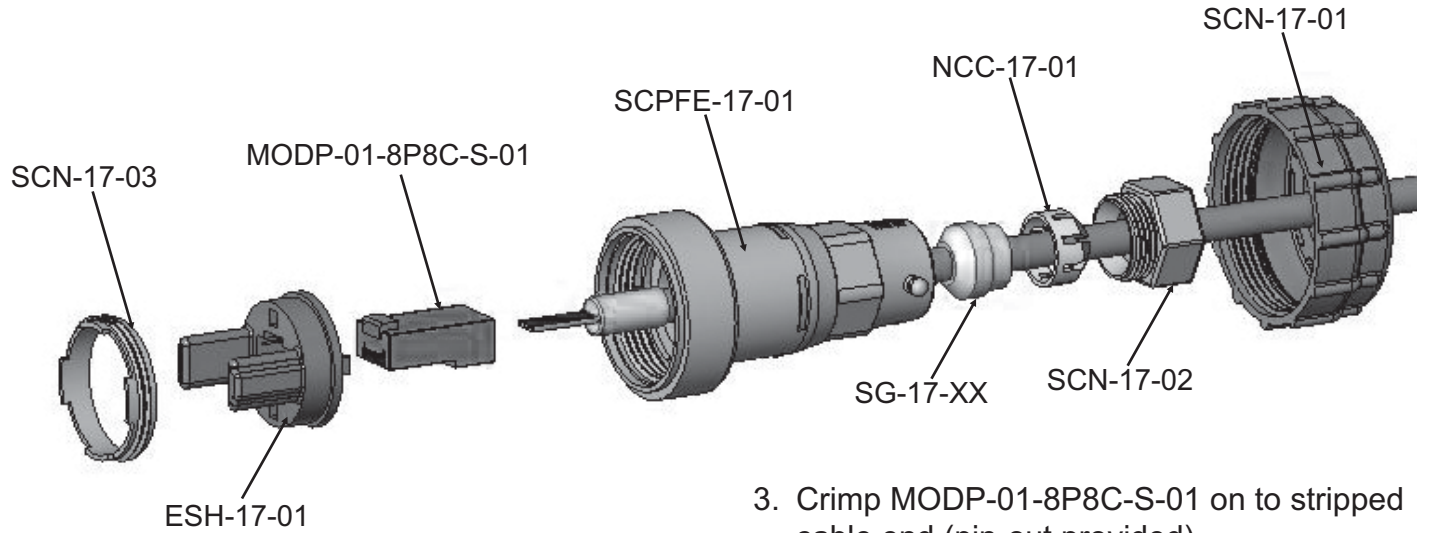
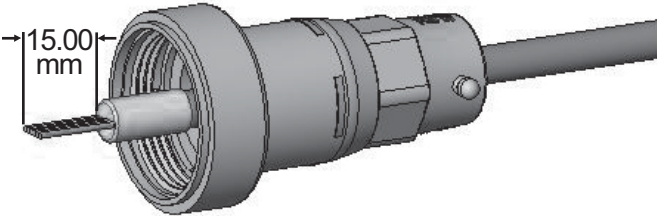
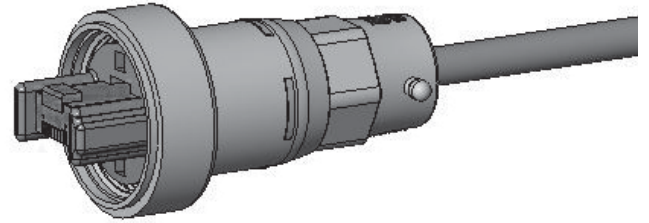


SCPFE Assembly/Wiring Instructions



1. Thread the SCN-17-01, SCN-17-02, NCC-17-01, SG-17-XX, and SCPFE-17-01 on to the Ethernet CAT 5e cable.

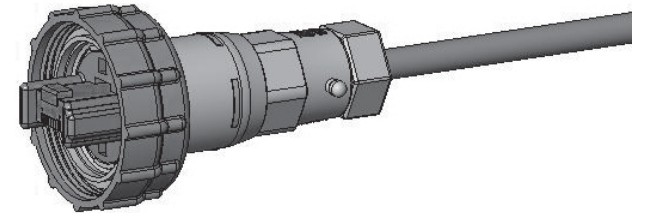
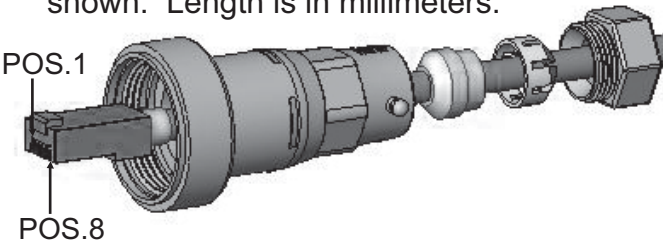
3. Crimp MODP-01-8P8C-S-01 on to stripped cable end (pin-out provided).



4. Snap MODP-01-8P8C-S-01 past beams on ESH-17-01 and locate ESH-17-01 in to the SCPFE-17-01 housing.

2. Strip Ethernet Cat 5e cable to dimension shown. Length is in millimeters.

5. Using SCPFE-TOOL-01 secure ESH-17-01 into SCPFE-17-01 housing with the SCN-17-03.



6. Slide SG-17-XX, NCC-17-01, and SCN-17-02 down Ethernet CAT 5e cable and locate in SCPFE-17-01 housing. Finally, screw SCN-17-02 onto the SCPFE-17-01 housing until the SCN-17-02 rests on the housing.

POS	COLOR	POS	COLOR
01	WHITE/ORANGE	05	BLUE
02	ORANGE	06	WHITE/BLUE
03	WHITE/GREEN	07	WHITE/BROWN
04	GREEN	08	BROWN



**Field Terminated Ethernet Kit
Wiring/Assembly Instructions for
SCPFE-17-G-01 & SCPFE-17-G-02**

