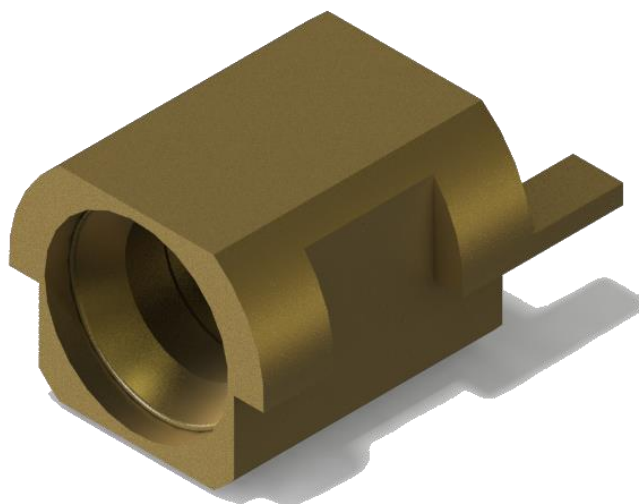


Series: SMPM, Plug, PCB Edge Mount, 50 Ω



Part Number: SMPM-PX-P-HG-ST-EM-1

INTERFACE
-F: FULL DETENT
-S: SMOOTH BORE

MATERIAL AND FINISHES

Connector part	Material	Finish
Shell	Beryllium Copper	3 μ " Gold over Nickel
Bushing	Beryllium Copper	10 μ " Gold over Nickel
Pin	Beryllium Copper	30 μ " Gold over Nickel
Insulator	PEK	

Series: SMPM, Plug, PCB Edge Mount, 50 Ω

ELECTRICAL DATA

Impedance	50 Ohm
Frequency Range ¹	DC to 67 GHz
VSWR ¹	DC to 26.5 GHz: 1.15:1 max 26.5 GHz to 40 GHz: 1.25:1 max 40 GHz to 67 GHz: 1.35:1 max
Insertion Loss ¹	$0.04\sqrt{F(GHz)} \text{ dB max}$
Insulation Resistance	5000 M Ω Min
Center Contact Resistance	6.0 m Ω Max
Outer Contact Resistance	2.0 m Ω Max
Voltage Rating (Sea Level)	170 Vrms Max
DWV	500 Vrms Min

¹ per connector, when tested in pairs, back-to-back with a coaxial fixture

MECHANICAL DATA

Mating Cycles	Full Detent: 100 cycles Smooth Bore: 500 cycles
Engagement Force	Full Detent: 8 lbs. Max Smooth Bore: 4 lbs. Max
Disengagement Force	Full Detent: 3 lbs. Min Smooth Bore: 0.5 lbs Min
Radial Misalignment	+/- 0.010"
Axial Misalignment	0.010" Max
Mass	0.22g

ENVIRONMENTAL DATA

Temperature Range	-65 to 150°C
Thermal Shock	EIA-364-32, -55 to +125°C, 100 Cycles
Vibration	EIA-364-28, Condition V-B, 2 hrs/axis
Mechanical Shock	EIA-364-27, Condition G

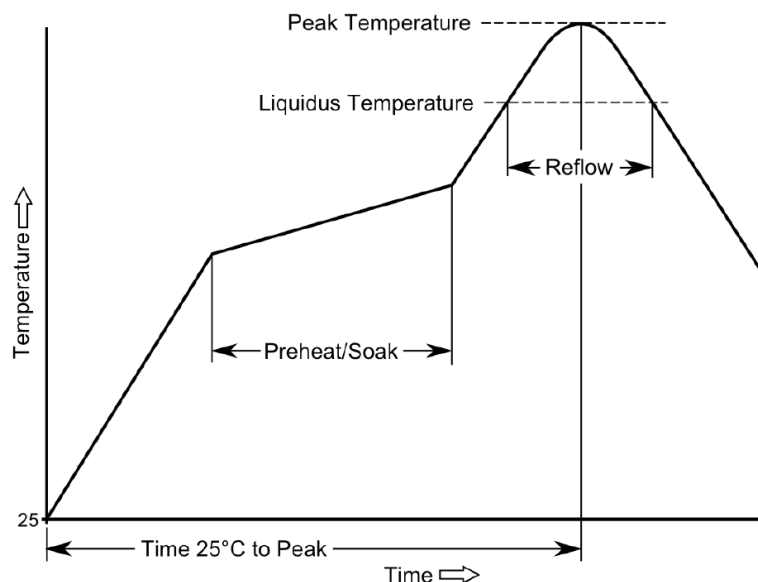
REFERENCED DOCUMENTS

Interface	Drawing & Footprint
Full Detent	Full Detent Drawing
Smooth Bore	Smooth Bore Drawing

Series: SMPM, Plug, PCB Edge Mount, 50 Ω

PROCESSING RECOMMENDATIONS

Soldering Process	SMT/Reflow
Solder Thickness (Stencil)	0.005 inch
Process Parameters (Sn-PB)	Preheat/Soak: 60-120 secs, 100 °C – 150 °C Ramp-Up: 3 °C/second Max Reflow Time: 40-150 secs, >183 °C Peak Temp: 235 °C Dwell Time: 20 secs @ 235 \pm 5°C Ramp-Down: 6 °C/second Max Start-to-Peak 6 mins Max
Process Parameters (PB-Free)	Preheat/Soak: 60-120 secs, 150 °C – 200 °C Ramp-Up: 3 °C/second Max Reflow Time: 40-150 secs, >217 °C Peak Temp: 260 °C Dwell Time: 30 secs @ 260 \pm 5°C Ramp-Down: 6 °C/second Max Start-to-Peak 8 mins Max



USE OF PRODUCT SPECIFICATION SHEET

This Product Specification Sheet (“PSS”) is a brief summary of information related to the Product identified. As a summary, it should only be used for the limited purpose of considering the purchase/use of Product. This PSS is the property of Samtec, Inc. (“Samtec”) and contains proprietary information of Samtec, our various licensors, or both. Samtec does not grant express or implied rights or license under any patent, copyright, trademark or other proprietary rights and the use of the PSS for building, reverse engineering or replication is strictly prohibited. By using the PSS, the user agrees to not infringe, directly or indirectly, upon any intellectual property rights of Samtec and acknowledges that Samtec, our various licensors, or both own all intellectual property therein. The PSS is presented “AS IS”. While Samtec makes every effort to present excellent information, the PSS is only provided as a guideline and does not, therefore, warrant it is without error or defect or that the PSS contains all necessary and/or relevant information about the Product. The user agrees that all access and use of the PSS is at its own risk. **NO WARRANTIES EXPRESSED OR IMPLIED, INCLUDING ANY WARRANTY OF MERCHANTABILITY, FITNESS FOR A PARTICULAR PURPOSE OR OF ANY KIND WHATSOEVER ARE PROVIDED**