

1. INTRODUCTION

This instruction sheet covers the use of the SAMTEC Torque Fixture CAT-TF-MCX-8-01. This tool allows the part requiring assembly to be mated to the inserted holder body to allow you to hold onto it while torquing the back nut on. This tool should be used along with the CAT-WR-MCX-8-01 Torque Wrench Adaptor (sold separately) to assemble properly.

2. CUSTOMER SERVICE

Further tooling and product application assistance is available by contacting the **Samtec Application Service Line +1-800-726-8329 (+1-812-944-6733)** 8:00 AM to 5:00 PM eastern time. To expedite your inquiry, have the pertinent part numbers for the product and tooling.

3. DESCRIPTION

Each tool has the top side marked with the tooling number. Make sure it matches the tooling number specified in this document.

4. APPLICATION PROCEDURE

The following steps are recommended:

1. Install applicable holder body into block (extra holder bodies are included) – the holder body should mate to the assembly being assembled.

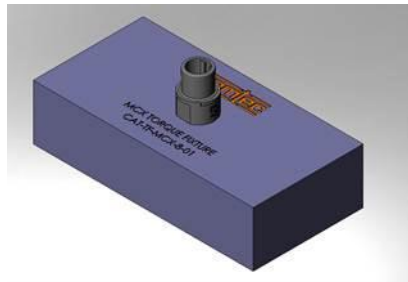


FIGURE 1

2. Mate assembly with applicable holder body that is now installed into the block.

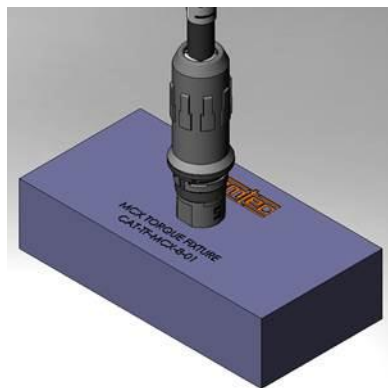


FIGURE 2

3. Now you can hold the front of the assembly while torquing the back nut (see product print for torque specifications).