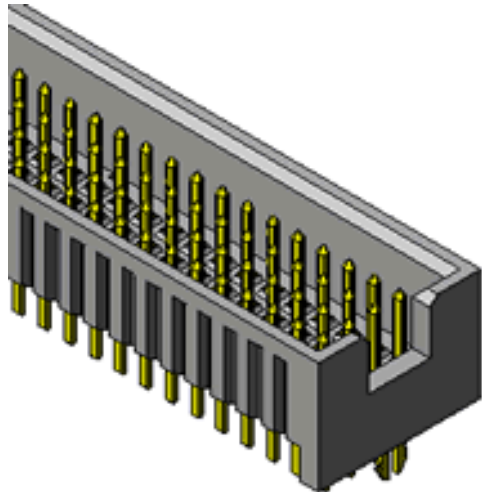
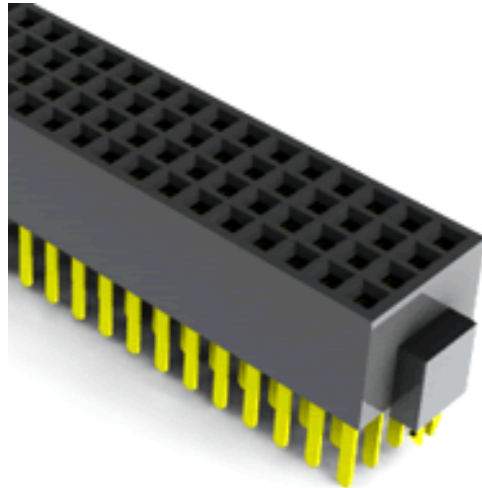




Project Number: Design Qualification Test Report		Tracking Code: 147207_Report_Rev_1	
Requested by: Mark Shireman		Date: 5/18/2012	Product Rev: 0
Part #: FOLC-150-01-L-Q-LC/MOLC-150-01-L-Q-LC		Lot #: N/A	Tech: Joe Smallwood Eng: Eric Mings
Part description: FOLC/MOLC			Qty to test: 45
Test Start: 8/2/2011	Test Completed: 8/31/2011		



Design Qualification Test Report

FOLC/MOLC

FOLC-150-01-L-Q-LC/MOLC-150-01-L-Q-LC

CERTIFICATION

All instruments and measuring equipment were calibrated to National Institute for Standards and Technology (NIST) traceable standards according to ISO 10012-1 and ANSI/NCSL 2540-1, as applicable.

All contents contained herein are the property of Samtec. No portion of this report, in part or in full shall be reproduced without prior written approval of Samtec.

SCOPE

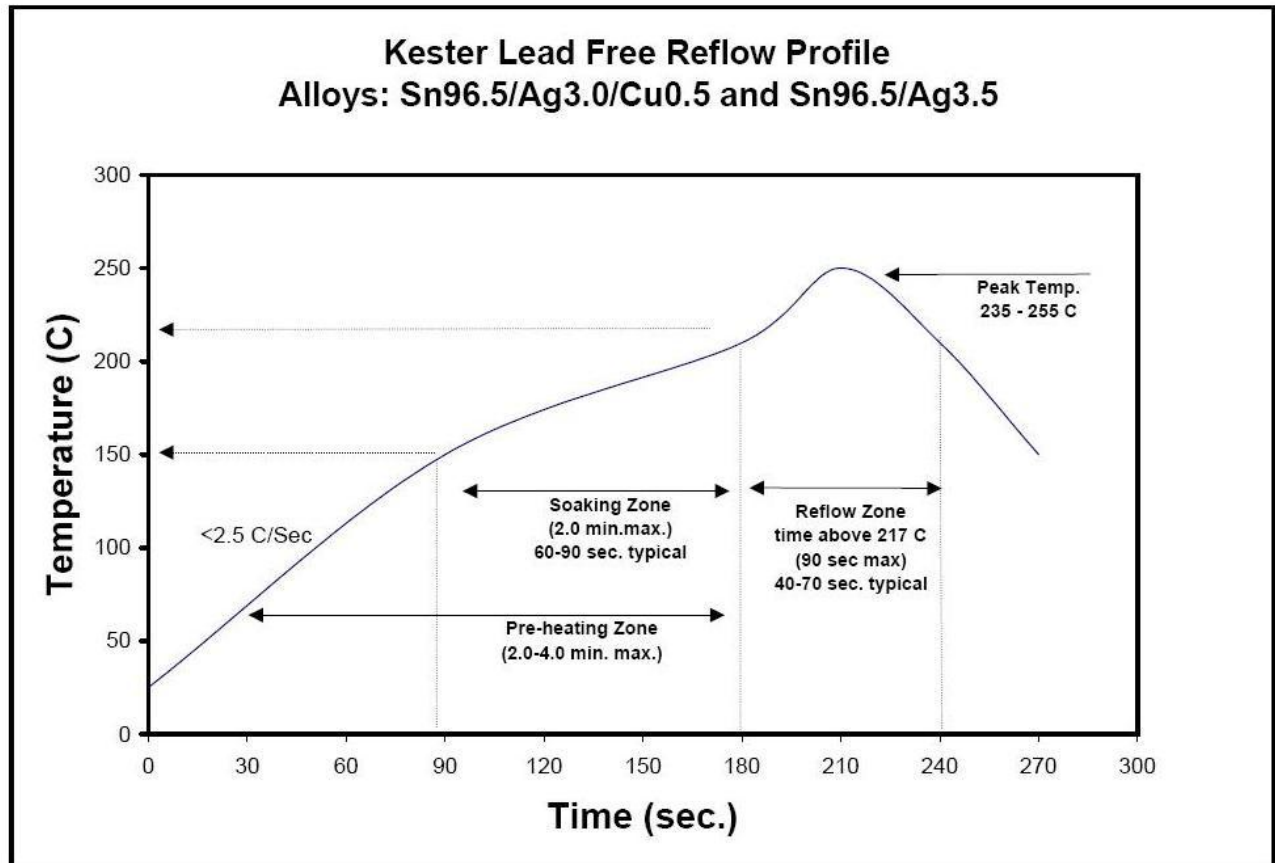
To perform the following tests: Design Qualification Test, Please see test plan.

APPLICABLE DOCUMENTS

Standards: EIA Publication 364

TEST SAMPLES AND PREPARATION

- 1) All materials were manufactured in accordance with the applicable product specification.
- 2) All test samples were identified and encoded to maintain traceability throughout the test sequences.
- 3) After soldering, the parts to be used for LLCR and DWV/IR testing were cleaned according to TLWI-0001.
- 4) Either an automated cleaning procedure or an ultrasonic cleaning procedure may be used.
- 5) The automated procedure is used with aqueous compatible soldering materials.
- 6) Parts not intended for testing LLCR and DWV/IR are visually inspected and cleaned if necessary.
- 7) Any additional preparation will be noted in the individual test sequences.
- 8) Solder Information: Lead free
- 9) Re-Flow Time/Temp: See accompanying profile.

TYPICAL OVEN PROFILE (Soldering Parts to Test Boards)

FLOWCHARTS**Gas Tight**

TEST STEP	GROUP A1 192 Points
01	LLCR-1
02	Gas Tight
03	LLCR-2

Gas Tight = EIA-364-36A

LLCR = EIA-364-23, LLCR

20 mV Max, 100 mA Max

Use Keithley 580 or 3706 in 4 wire dry circuit mode

Thermal Aging

TEST STEP	GROUP A1 8 Boards Thermal Aging (Mated)
01	Forces - Mating / Unmating
02	LLCR-1
03	Thermal Aging (Mated and Undisturbed)
04	LLCR-2
05	Forces - Mating / Unmating

Thermal Aging = EIA-364-17, Test Condition 4 (105°C)

Time Condition 'B' (250 Hours)

Mating / Unmating Forces = EIA-364-13

LLCR = EIA-364-23, LLCR

20 mV Max, 100 mA Max

Use Keithley 580 or 3706 in 4 wire dry circuit mode

FLOWCHARTS Continued**Durability/Mating/Unmating/Gaps**

TEST STEP	GROUP B1 8 Boards (largest position submitted)	GROUP B2 8 Boards (middle position submitted)	GROUP B3 8 Boards (smallest position submitted)
01	Contact Gaps	Contact Gaps	Contact Gaps
02	LLCR-1	Forces - Mating / Unmating	Forces - Mating / Unmating
03	Forces - Mating / Unmating	25 Cycles	25 Cycles
04	25 Cycles	Forces - Mating / Unmating	Forces - Mating / Unmating
05	Forces - Mating / Unmating	25 Cycles (50 Total)	25 Cycles (50 Total)
06	25 Cycles (50 Total)	Forces - Mating / Unmating	Forces - Mating / Unmating
07	Forces - Mating / Unmating	25 Cycles (75 Total)	25 Cycles (75 Total)
08	25 Cycles (75 Total)	Forces - Mating / Unmating	Forces - Mating / Unmating
09	Forces - Mating / Unmating	25 Cycles (100 Total)	25 Cycles (100 Total)
10	25 Cycles (100 Total)	Forces - Mating / Unmating	Forces - Mating / Unmating
11	Forces - Mating / Unmating		
12	Clean w/Compressed Air		
13	Contact Gaps		
14	LLCR-2		
15	Thermal Shock (Mated and Undisturbed)		
16	LLCR-3		
17	Cyclic Humidity (Mated and Undisturbed)		
18	LLCR-4		
19	Forces - Mating / Unmating		

Thermal Shock = EIA-364-32, Table II, Test Condition I:

-55°C to +85°C 1/2 hour dwell, 100 cycles

Humidity = EIA-364-31, Test Condition B (240 Hours)

and Method III (+25°C to +65°C @ 90% RH to 98% RH)

ambient pre-condition and delete steps 7a and 7b

Mating / Unmating Forces = EIA-364-13

Contact Gaps / Height - No standard method. Usually measured optically.

Gaps to be taken on a minimum of 20% of each part tested

LLCR = EIA-364-23, LLCR

20 mV Max, 100 mA Max

Use Keithley 580 or 3706 in 4 wire dry circuit mode

FLOWCHARTS Continued**IR & DWV**

TEST STEP	GROUP A1 2 Mated Sets Break Down Pin-to-Pin	GROUP A2 2 Unmated of Part # Being Tested Break Down Pin-to-Pin	GROUP A3 2 Unmated of Mating Part # Break Down Pin-to-Pin	GROUP B1 2 Mated Sets Pin-to-Pin
01	DWV/Break Down Voltage	DWV/Break Down Voltage	DWV/Break Down Voltage	IR & DWV at test voltage (on both mated sets and on each connector unmated)
02				Thermal Shock (Mated and Undisturbed)
03				IR & DWV at test voltage (on both mated sets and on each connector unmated)
04				Cyclic Humidity (Mated and Undisturbed)
05				IR & DWV at test voltage (on both mated sets and on each connector unmated)

TEST STEP	GROUP C1 2 Mated Sets Break Down Row-to-Row	GROUP C2 2 Unmated of Part # Being Tested Break Down Row-to-Row	GROUP C3 2 Unmated of Mating Part # Break Down Row-to-Row	GROUP D1 2 Mated Sets Row-to-Row
01	DWV/Break Down Voltage	DWV/Break Down Voltage	DWV/Break Down Voltage	IR & DWV at test voltage (on both mated sets and on each connector unmated)
02				Thermal Shock (Mated and Undisturbed)
03				IR & DWV at test voltage (on both mated sets and on each connector unmated)
04				Cyclic Humidity (Mated and Undisturbed)
05				IR & DWV at test voltage (on both mated sets and on each connector unmated)

DWV on Group B1 to be performed at Test Voltage

DWV test voltage is equal to 75% of the lowest break down voltage from Groups A1, A2 or A3

Thermal Shock = EIA-364-32, Table II, Test Condition I:

-55°C to +85°C 1/2 hour dwell, 100 cycles

Humidity = EIA-364-31, Test Condition B (240 Hours)

and Method III (+25°C to +65°C @ 90% RH to 98% RH)

ambient pre-condition and delete steps 7a and 7b

IR = EIA-364-21

DWV = EIA-364-20, Test Condition 1

FLOWCHARTS Continued**Normal Force**

TEST STEP	GROUP A1 Individual Contacts (8-10 min)	GROUP A2 Individual Contacts (8-10 min)
01	Contact Gaps	Contact Gaps
02	Setup Approved	Thermal Aging (Mated and Undisturbed)
03	Normal Force (in the body and soldered on PCB unless otherwise specified)	Contact Gaps
04		Setup Approved
05		Normal Force (in the body and soldered on PCB unless otherwise specified)

Thermal Aging = EIA-364-17, Test Condition 4 (105°C)

Time Condition 'B' (250 Hours)

Normal Force = EIA-364-04

(Perpendicular) Displacement Force = 12.7 mm/min \pm 6 mm/min

Spec is 50 N @ 1 mm displacement

Contact Gaps / Height - No standard method. Usually measured optically

Current Carrying Capacity - Array

TEST STEP	GROUP D1 3 Mated Assemblies 1 Vertical Row Powered	GROUP D2 3 Mated Assemblies 2 Adjacent Vertical Rows Powered	GROUP D3 3 Mated Assemblies 3 Adjacent Vertical Rows Powered
01	CCC	CCC	CCC
TEST STEP	GROUP D4 3 Mated Assemblies 4 Adjacent Vertical Rows Powered	GROUP D5 3 Mated Assemblies All Contacts Powered	
01	CCC	CCC	

(TIN PLATING) - Tabulate calculated current at RT, 65°C, 75°C and 95°C
after derating 20% and based on 105°C

(GOLD PLATING) - Tabulate calculated current at RT, 85°C, 95°C and 115°C
after derating 20% and based on 125°C

CCC, Temp rise = EIA-364-70

FLOWCHARTS Continued**Mechanical Shock / Vibration / LLCR**

TEST STEP	GROUP A1 192 Points
01	LLCR-1
02	Shock
03	Vibration
04	LLCR-2

Mechanical Shock = EIA 364-27 Half Sine,

100 g's, 6 milliSeconds (Condition "C") each axis

Vibration = EIA 364-28, Random Vibration

7.56 g RMS, Condition VB --- 2 hours/axis

LLCR = EIA-364-23, LLCR

20 mV Max, 100 mA Max

Use Keithley 580 or 3706 in 4 wire dry circuit mode

Shock / Vibration / nanoSecond Event Detection

TEST STEP	GROUP A1 60 Points
01	Event Detection, Shock
02	Event Detection, Vibration

Mechanical Shock = EIA 364-27 Half Sine,

100 g's, 6 milliSeconds (Condition "C") each axis

Vibration = EIA 364-28, Random Vibration

7.56 g RMS, Condition VB --- 2 hours/axis

Event detection requirement during Shock / Vibration is 50 nanoseconds minimum

ATTRIBUTE DEFINITIONS

The following is a brief, simplified description of attributes.

THERMAL SHOCK:

- 1) EIA-364-32, *Thermal Shock (Temperature Cycling) Test Procedure for Electrical Connectors*.
- 2) Test Condition 1: -55°C to +85°C
- 3) Test Time: ½ hour dwell at each temperature extreme
- 4) Number of Cycles: 100
- 5) All test samples are pre-conditioned at ambient.
- 6) All test samples are exposed to environmental stressing in the mated condition.

THERMAL:

- EIA-364-17, *Temperature Life with or without Electrical Load Test Procedure for Electrical Connectors*.
- Test Condition 4 at 105° C.
- Test Time Condition B for 250 hours.
- All test samples are pre-conditioned at ambient.
- All test samples are exposed to environmental stressing in the mated condition.

HUMIDITY:

- 1) Reference document: EIA-364-31, *Humidity Test Procedure for Electrical Connectors*.
- 2) Test Condition B, 240 Hours.
- 3) Method III, +25° C to + 65° C, 90% to 98% Relative Humidity excluding sub-cycles 7a and 7b.
- 4) All samples are pre-conditioned at ambient.
- 5) All test samples are exposed to environmental stressing in the mated condition.

MECHANICAL SHOCK (Specified Pulse):

- 1) Reference document: EIA-364-27, *Mechanical Shock Test Procedure for Electrical Connectors*
- 2) Test Condition C
- 3) Peak Value: 100 G
- 4) Duration: 6 Milliseconds
- 5) Wave Form: Half Sine
- 6) Velocity: 12.3 ft/s
- 7) Number of Shocks: 3 Shocks / Direction, 3 Axis (18 Total)

VIBRATION:

- 1) Reference document: EIA-364-28, *Vibration Test Procedure for Electrical Connectors*
- 2) Test Condition V, Letter B
- 3) Power Spectral Density: 0.04 G² / Hz
- 4) G 'RMS': 7.56
- 5) Frequency: 50 to 2000 Hz
- 6) Duration: 2.0 Hours per axis (3 axis total)

NANOSECOND-EVENT DETECTION:

- 1) Reference document: EIA-364-87, *Nanosecond-Event Detection for Electrical Connectors*
- 2) Prior to test, the samples were characterized to assure the low nanosecond event being monitored will trigger the detector.
- 3) After characterization it was determined the test samples could be monitored for 50 nanosecond events

ATTRIBUTE DEFINITIONS

The following is a brief, simplified description of attributes.

CONTACT GAPS:

- 1) Gaps above the surrounding plastic surface were measured before and after stressing the contacts (e.g. thermal aging, mechanical cycling, etc.).
- 2) Typically, all contacts on the connector are measured.

MATING/UNMATING:

- 1) Reference document: EIA-364-13, *Mating and Unmating Forces Test Procedure for Electrical Connectors*.
- 2) The full insertion position was to within 0.003" to 0.004" of the plug bottoming out in the receptacle to prevent damage to the system under test.
- 3) One of the mating parts is secured to a floating X-Y table to prevent damage during cycling.

NORMAL FORCE (FOR CONTACTS TESTED IN THE HOUSING):

- 1) Reference document: EIA-364-04, *Normal Force Test Procedure for Electrical Connectors*.
- 2) The contacts shall be tested in the connector housing.
- 3) If necessary, a "window" shall be made in the connector body to allow a probe to engage and deflect the contact at the same attitude and distance (plus 0.05 mm [0.002"]) as would occur in actual use.
- 4) The connector housing shall be placed in a holding fixture that does not interfere with or otherwise influence the contact force or deflection.
- 5) Said holding fixture shall be mounted on a floating, adjustable, X-Y table on the base of the Dillon TC², computer controlled test stand with a deflection measurement system accuracy of 5.0 μm (0.0002").
- 6) The nominal deflection rate shall be 5 mm (0.2")/minute.
- 7) Unless otherwise noted a minimum of five contacts shall be tested.
- 8) The force/deflection characteristic to load and unload each contact shall be repeated five times.
- 9) The system shall utilize the TC² software in order to acquire and record the test data.
- 10) The permanent set of each contact shall be measured within the TC² software.
- 11) The acquired data shall be graphed with the deflection data on the X-axis and the force data on the Y-axis and a print out will be stored with the Tracking Code paperwork.

INSULATION RESISTANCE (IR):

To determine the resistance of insulation materials to leakage of current through or on the surface of these materials when a DC potential is applied.

- 1) PROCEDURE:
 - a. Reference document: EIA-364-21, *Insulation Resistance Test Procedure for Electrical Connectors*.
 - b. Test Conditions:
 - i. Between Adjacent Contacts or Signal-to-Ground
 - ii. Electrification Time 2.0 minutes
 - iii. Test Voltage (500 VDC) corresponds to calibration settings for measuring resistances.
- 2) MEASUREMENTS:
- 3) When the specified test voltage is applied (VDC), the insulation resistance shall not be less than 5000 megohms.

ATTRIBUTE DEFINITIONS

The following is a brief, simplified description of attributes

DIELECTRIC WITHSTANDING VOLTAGE (DWV):

To determine if the sockets can operate at its rated voltage and withstand momentary over potentials due to switching, surges, and other similar phenomenon. Separate samples are used to evaluate the effect of environmental stresses so not to influence the readings from arcing that occurs during the measurement process.

1) PROCEDURE:

- a. Reference document: EIA-364-20, *Withstanding Voltage Test Procedure for Electrical Connectors*.
- b. Test Conditions:
 - i. Between Adjacent Contacts or Signal-to-Ground
 - ii. Rate of Application 500 V/Sec
 - iii. Test Voltage (VAC) until breakdown occurs

2) MEASUREMENTS/CALCULATIONS

- a. The breakdown voltage shall be measured and recorded.
- b. The dielectric withstanding voltage shall be recorded as 75% of the minimum breakdown voltage.
- c. The working voltage shall be recorded as one-third (1/3) of the dielectric withstanding voltage (one-fourth of the breakdown voltage)..

TEMPERATURE RISE (Current Carrying Capacity, CCC):

- 1) EIA-364-70, *Temperature Rise versus Current Test Procedure for Electrical Connectors and Sockets*.
- 2) When current passes through a contact, the temperature of the contact increases as a result of I^2R (resistive) heating.
- 3) The number of contacts being investigated plays a significant part in power dissipation and therefore temperature rise.
- 4) The size of the temperature probe can affect the measured temperature.
- 5) Copper traces on PC boards will contribute to temperature rise:
 - a. Self heating (resistive)
 - b. Reduction in heat sink capacity affecting the heated contacts
- 6) A de-rating curve, usually 20%, is calculated.
- 7) Calculated de-rated currents at three temperature points are reported:
 - a. Ambient
 - b. 80° C
 - c. 95° C
 - d. 115° C
- 8) Typically, neighboring contacts (in close proximity to maximize heat build up) are energized.
- 9) The thermocouple (or temperature measuring probe) will be positioned at a location to sense the maximum temperature in the vicinity of the heat generation area.
- 10) A computer program, *TR 803.exe*, ensures accurate stability for data acquisition.
- 11) Hook-up wire cross section is larger than the cross section of any connector leads/PC board traces, jumpers, etc.
- 12) Hook-up wire length is longer than the minimum specified in the referencing standard.

ATTRIBUTE DEFINITIONS

The following is a brief, simplified description of attributes.

LLCR:

- 1) EIA-364-23, *Low Level Contact Resistance Test Procedure for Electrical Connectors and Sockets*.
- 2) A computer program, *LLCR 221.exe*, ensures repeatability for data acquisition.
- 3) The following guidelines are used to categorize the changes in LLCR as a result from stressing
 - a. $\leq +5.0$ mOhms:----- Stable
 - b. $+5.1$ to $+10.0$ mOhms:----- Minor
 - c. $+10.1$ to $+15.0$ mOhms:----- Acceptable
 - d. $+15.1$ to $+50.0$ mOhms:----- Marginal
 - e. $+50.1$ to $+2000$ mOhms:----- Unstable
 - f. $>+2000$ mOhms:----- Open Failure

GAS TIGHT:

To provide method for evaluating the ability of the contacting surfaces in preventing penetration of harsh vapors which might lead to oxide formation that may degrade the electrical performance of the contact system.

- 1) EIA-364-23, *Low Level Contact Resistance Test Procedure for Electrical Connectors and Sockets*.
- 2) A computer program, *LLCR 221.exe*, ensures repeatability for data acquisition.
- 3) The following guidelines are used to categorize the changes in LLCR as a result from stressing
 - a. $\leq +5.0$ mOhms:----- Stable
 - b. $+5.1$ to $+10.0$ mOhms:----- Minor
 - c. $+10.1$ to $+15.0$ mOhms:----- Acceptable
 - d. $+15.1$ to $+50.0$ mOhms:----- Marginal
 - e. $+50.1$ to $+2000$ mOhms:----- Unstable
 - f. $>+2000$ mOhms:----- Open Failure
- 4) Procedure:
 - a. Reference document: EIA-364-36, *Test Procedure for Determination of Gas-Tight Characteristics for Electrical Connectors, Sockets and/or Contact Systems*.
 - b. Test Conditions:
 - i. Class II--- Mated pairs of contacts assembled to their plastic housings.
 - ii. Reagent grade Nitric Acid shall be used of sufficient volume to saturate the test chamber
 - iii. The ratio of the volume of the test chamber to the surface area of the acid shall be 10:1.
 - iv. The chamber shall be saturated with the vapor for at least 15 minutes before samples are added.
 - v. Exposure time, 55 to 65 minutes.
 - vi. The samples shall be no closer to the chamber walls than 1 inches and no closer to the surface of the acid than 3 inches.
 - vii. The samples shall be dried after exposure for a minimum of 1 hour.
 - viii. Drying temperature 50° C
 - ix. The final LLCR shall be conducted within 1 hour after drying.

RESULTS**Temperature Rise, CCC at a 20% de-rating**

- CCC for a 30°C Temperature Rise -----2.6 A per contact with 1 vertical row powered
- CCC for a 30°C Temperature Rise -----2.0 A per contact with 2 adjacent vertical row powered
- CCC for a 30°C Temperature Rise -----1.6 A per contact with 3 adjacent vertical row powered
- CCC for a 30°C Temperature Rise -----1.4 A per contact with 4 adjacent vertical row powered
- CCC for a 30°C Temperature Rise -----0.7 A per contact with all adjacent vertical row powered

Contact Gaps**Durability**

- **Initial**
 - Min-----0.0117 inch
 - Max -----0.0135 inch
- **After 100 cycles**
 - Min-----0.0109 inch
 - Max -----0.0131 inch

Thermal aging

- **Initial**
 - Min-----0.0114 inch
 - Max -----0.0128 inch
- **After thermal aging**
 - Min-----0.0120 inch
 - Max -----0.0133 inch

Normal force initial

- **Initial**
 - Min-----0.0118 inch
 - Max -----0.0124 inch

Normal force after thermal

- **Initial**
 - Min-----0.0119 inch
 - Max -----0.0126 inch
- **After thermal aging**
 - Min-----0.0124 inch
 - Max -----0.0129 inch

RESULTS Continued**Mating /unmating force****Mating&Unmating durability (FOLC-150-01-L-Q-LC/MOLC-150-01-L-Q-LC):**

- **Initial**
 - **Mating**
 - **Min** -----30.69 Lbs
 - **Max** -----37.98 Lbs
 - **Unmating**
 - **Min** -----23.12 Lbs
 - **Max** -----30.13 Lbs
- **After 25 Cycles**
 - **Mating**
 - **Min** -----28.32 Lbs
 - **Max** -----32.99 Lbs
 - **Unmating**
 - **Min** -----21.99 Lbs
 - **Max** -----27.49 Lbs
- **After 50 Cycles**
 - **Mating**
 - **Min** -----30.88 Lbs
 - **Max** -----35.70 Lbs
 - **Unmating**
 - **Min** -----22.96 Lbs
 - **Max** -----29.60 Lbs
- **After 75 Cycles**
 - **Mating**
 - **Min** -----33.36 Lbs
 - **Max** -----38.48 Lbs
 - **Unmating**
 - **Min** -----24.18 Lbs
 - **Max** -----31.35 Lbs
- **After 100 Cycles**
 - **Mating**
 - **Min** -----35.32 Lbs
 - **Max** -----40.70 Lbs
 - **Unmating**
 - **Min** -----25.22 Lbs
 - **Max** -----32.52 Lbs
- **After Humidity**
 - **Mating**
 - **Min** -----20.89 Lbs
 - **Max** -----29.79 Lbs
 - **Unmating**
 - **Min** -----16.76 Lbs
 - **Max** -----23.18 Lbs

RESULTS Continued**Mating&Unmating basic (FOLC-135-01-L-Q-LC/MOLC-135-01-L-Q-LC):**

- **Initial**
 - **Mating**
 - **Min** -----29.04 Lbs
 - **Max** -----34.64 Lbs
 - **Unmating**
 - **Min** -----23.27 Lbs
 - **Max** -----28.44 Lbs
- **After 25 Cycles**
 - **Mating**
 - **Min** -----25.27 Lbs
 - **Max** -----32.61 Lbs
 - **Unmating**
 - **Min** -----20.24 Lbs
 - **Max** -----28.42 Lbs
- **After 50 Cycles**
 - **Mating**
 - **Min** -----26.72 Lbs
 - **Max** -----36.06 Lbs
 - **Unmating**
 - **Min** -----21.21 Lbs
 - **Max** -----28.19 Lbs
- **After 75 Cycles**
 - **Mating**
 - **Min** -----28.34 Lbs
 - **Max** -----39.34 Lbs
 - **Unmating**
 - **Min** -----22.18 Lbs
 - **Max** -----29.10 Lbs
- **After 100 Cycles**
 - **Mating**
 - **Min** -----29.76 Lbs
 - **Max** -----41.31 Lbs
 - **Unmating**
 - **Min** -----23.24 Lbs
 - **Max** -----29.75 Lbs

RESULTS Continued**Mating&Unmating basic (FOLC-120-01-L-Q-LC/MOLC-120-01-L-Q-LC):**

- **Initial**
 - **Mating**
 - **Min** -----19.18 Lbs
 - **Max** -----20.58 Lbs
 - **Unmating**
 - **Min** -----15.84 Lbs
 - **Max** -----19.76 Lbs
- **After 25 Cycles**
 - **Mating**
 - **Min** -----18.58 Lbs
 - **Max** -----21.21 Lbs
 - **Unmating**
 - **Min** -----15.64 Lbs
 - **Max** -----20.22 Lbs
- **After 50 Cycles**
 - **Mating**
 - **Min** -----20.52 Lbs
 - **Max** -----22.64 Lbs
 - **Unmating**
 - **Min** -----16.70 Lbs
 - **Max** -----20.34 Lbs
- **After 75 Cycles**
 - **Mating**
 - **Min** -----22.88 Lbs
 - **Max** -----24.62 Lbs
 - **Unmating**
 - **Min** -----16.94 Lbs
 - **Max** -----20.77 Lbs
- **After 100 Cycles**
 - **Mating**
 - **Min** -----23.48 Lbs
 - **Max** -----25.60 Lbs
 - **Unmating**
 - **Min** -----17.38 Lbs
 - **Max** -----20.50 Lbs

Thermal aging

- **Initial**
 - **Mating**
 - **Min** -----37.05 Lbs
 - **Max** -----48.37 Lbs
 - **Unmating**
 - **Min** -----29.85 Lbs
 - **Max** -----34.83 Lbs
- **After thermal aging**
 - **Mating**
 - **Min** -----26.43 Lbs
 - **Max** -----36.24 Lbs
 - **Unmating**
 - **Min** -----22.94 Lbs
 - **Max** -----30.44 Lbs

RESULTS Continued**Normal Force at 0.005 inch deflection****Back beams:**

- **Initial**
 - Min-----82.80 gf Set ---- 0.0002 inch
 - Max -----104.40 gf Set ---- 0.0007 inch
- **Thermal**
 - Min-----80.20 gf Set ---- 0.0004 inch
 - Max -----127.40 gf Set ---- 0.0009 inch

Main beams:

- **Initial**
 - Min-----79.80 gf Set ---- 0.0007 inch
 - Max -----103.30 gf Set ---- 0.0010 inch
- **Thermal**
 - Min-----72.20 gf Set ---- 0.0005 inch
 - Max -----100.20 gf Set ---- 0.0012 inch

LLCR Durability (192 pin LLCR test points)

- **Initial** ----- 10.7 mOhms Max
- **After 100 Cycles**
 - <= +5.0 mOhms ----- 192 Points ----- Stable
 - +5.1 to +10.0 mOhms -----0 Points ----- Minor
 - +10.1 to +15.0 mOhms -----0 Points ----- Acceptable
 - +15.1 to +50.0 mOhms -----0 Points ----- Marginal
 - +50.1 to +2000 mOhms -----0 Points ----- Unstable
 - >+2000 mOhms -----0 Points ----- Open Failure
- **After thermal shock**
 - <= +5.0 mOhms ----- 192 Points ----- Stable
 - +5.1 to +10.0 mOhms -----0 Points ----- Minor
 - +10.1 to +15.0 mOhms -----0 Points ----- Acceptable
 - +15.1 to +50.0 mOhms -----0 Points ----- Marginal
 - +50.1 to +2000 mOhms -----0 Points ----- Unstable
 - >+2000 mOhms -----0 Points ----- Open Failure
- **After humidity**
 - <= +5.0 mOhms ----- 192 Points ----- Stable
 - +5.1 to +10.0 mOhms -----0 Points ----- Minor
 - +10.1 to +15.0 mOhms -----0 Points ----- Acceptable
 - +15.1 to +50.0 mOhms -----0 Points ----- Marginal
 - +50.1 to +2000 mOhms -----0 Points ----- Unstable
 - >+2000 mOhms -----0 Points ----- Open Failure

LLCR Thermal Aging (192 pin LLCR test points)

- **Initial** -----8.6 mOhms Max
- **Thermal Aging**
 - <= +5.0 mOhms ----- 192 Points ----- Stable
 - +5.1 to +10.0 mOhms -----0Points ----- Minor
 - +10.1 to +15.0 mOhms -----0 Points ----- Acceptable
 - +15.1 to +50.0 mOhms -----0 Points ----- Marginal
 - +50.1 to +2000 mOhms -----0 Points ----- Unstable
 - >+2000 mOhms -----0 Points ----- Open Failure

RESULTS Continued**LLCR Gas Tight (192 pin LLCR test points)**

- **Initial** ----- **10.1 mOhms Max**
- **Gas-Tight**
 - **<= +5.0 mOhms** ----- **192 Points** ----- **Stable**
 - **+5.1 to +10.0 mOhms** ----- **0 Points** ----- **Minor**
 - **+10.1 to +15.0 mOhms** ----- **0 Points** ----- **Acceptable**
 - **+15.1 to +50.0 mOhms** ----- **0 Points** ----- **Marginal**
 - **+50.1 to +2000 mOhms** ----- **0 Points** ----- **Unstable**
 - **>+2000 mOhms** ----- **0 Points** ----- **Open Failure**

LLCR Shock Vib (192 pin LLCR test points)

- **Initial** ----- **9.8 mOhms Max**
- **S&V**
 - **<= +5.0 mOhms** ----- **192 Points** ----- **Stable**
 - **+5.1 to +10.0 mOhms** ----- **0 Points** ----- **Minor**
 - **+10.1 to +15.0 mOhms** ----- **0 Points** ----- **Acceptable**
 - **+15.1 to +50.0 mOhms** ----- **0 Points** ----- **Marginal**
 - **+50.1 to +2000 mOhms** ----- **0 Points** ----- **Unstable**
 - **>+2000 mOhms** ----- **0 Points** ----- **Open Failure**

Mechanical Shock & Random Vibration:

- **Shock**
 - **No Damage**----- **Passed**
 - **50 Nanoseconds**----- **Passed**
- **Vibration**
 - **No Damage**----- **Passed**
 - **50 Nanoseconds**----- **Passed**

RESULTS Continued

Insulation Resistance minimums, IR

Pin-Pin

- **Initial**
 - Mated -----50000Meg Ω ----- Pass
 - Unmated ----- 100000Meg Ω ----- Pass
- **Thermal**
 - Mated -----50000Meg Ω ----- Pass
 - Unmated -----50000Meg Ω ----- Pass
- **Humidity**
 - Mated -----25000Meg Ω ----- Pass
 - Unmated -----25000Meg Ω ----- Pass

Row-Row

- **Initial**
 - Mated ----- 100000Meg Ω ----- Pass
 - Unmated ----- 100000Meg Ω ----- Pass
- **Thermal**
 - Mated -----50000Meg Ω ----- Pass
 - Unmated ----- 100000Meg Ω ----- Pass
- **Humidity**
 - Mated ----- 100000Meg Ω ----- Pass
 - Unmated -----50000Meg Ω ----- Pass

Dielectric Withstanding Voltage minimums, DWV

- **Minimums**
 - Breakdown Voltage -----660VAC
 - Test Voltage -----495VAC
 - Working Voltage -----165VAC

Pin - pin

- **Initial DWV -----Passed**
- **Thermal DWV -----Passed**
- **Humidity DWV -----Passed**

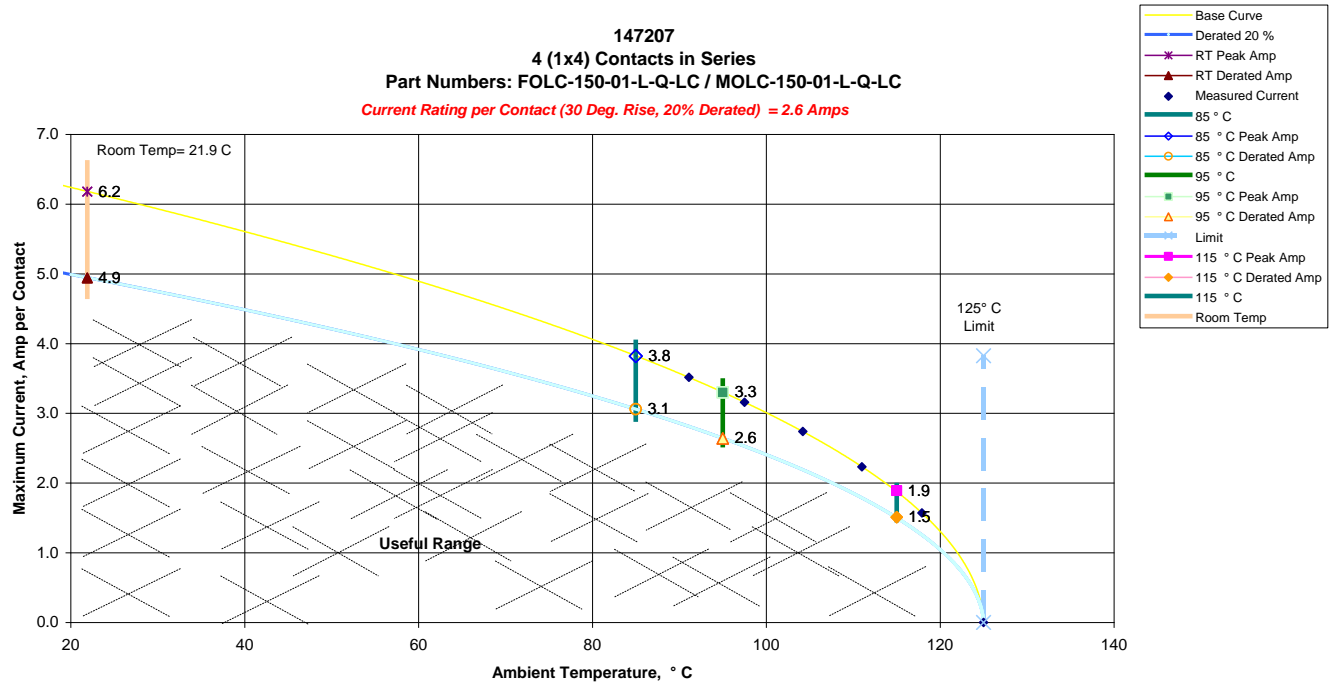
Row-Row

- **Initial DWV -----Passed**
- **Thermal DWV -----Passed**
- **Humidity DWV -----Passed**

DATA SUMMARIES

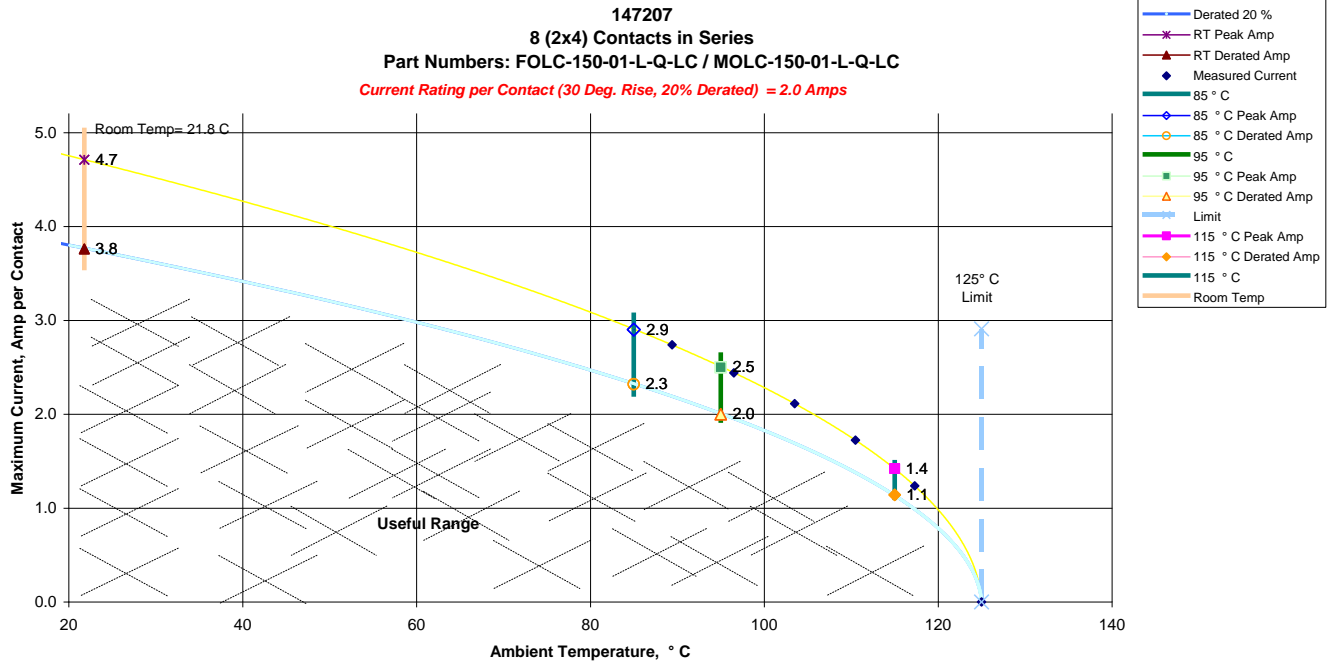
TEMPERATURE RISE (Current Carrying Capacity, CCC):

- 1) High quality thermocouples whose temperature slopes track one another were used for temperature monitoring.
- 2) The thermocouples were placed at a location to sense the maximum temperature generated during testing.
- 3) Temperature readings recorded are those for which three successive readings, 15 minutes apart, differ less than 1° C (computer controlled data acquisition).
- 4) Adjacent contacts were powered:
 - a. Linear configuration with 1 vertical row powered

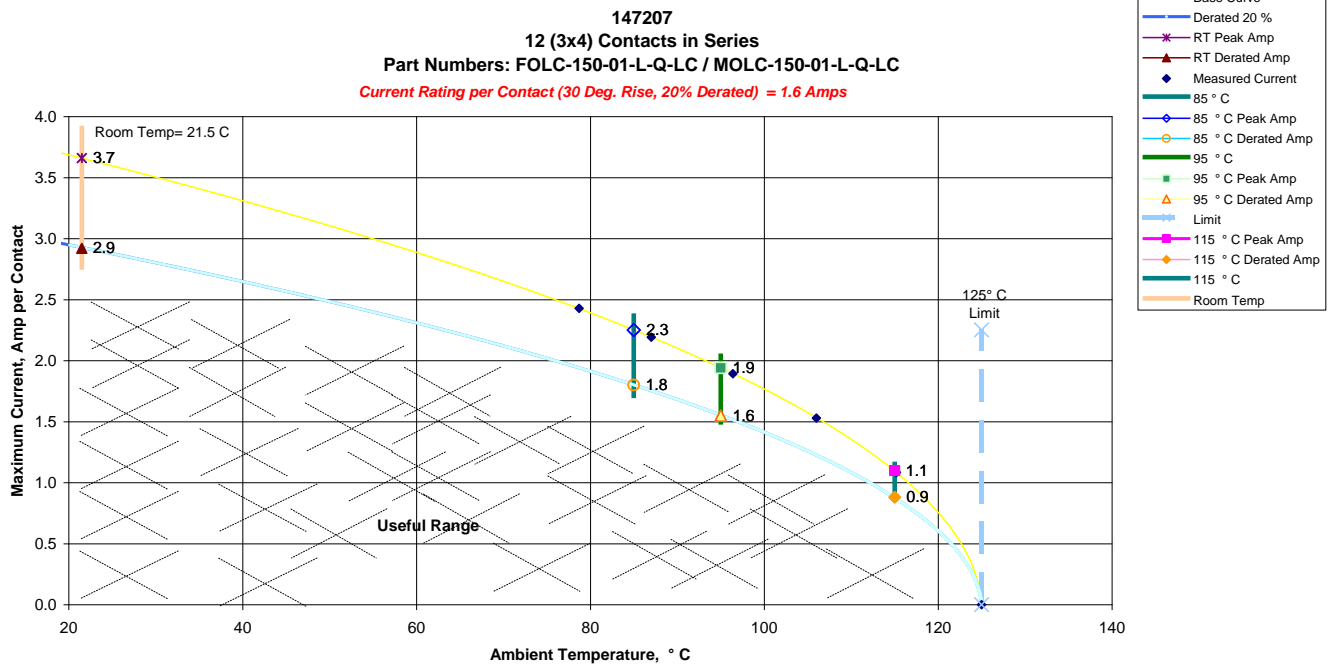


DATA SUMMARIES continued

b. Linear configuration with 2 adjacent vertical rows powered

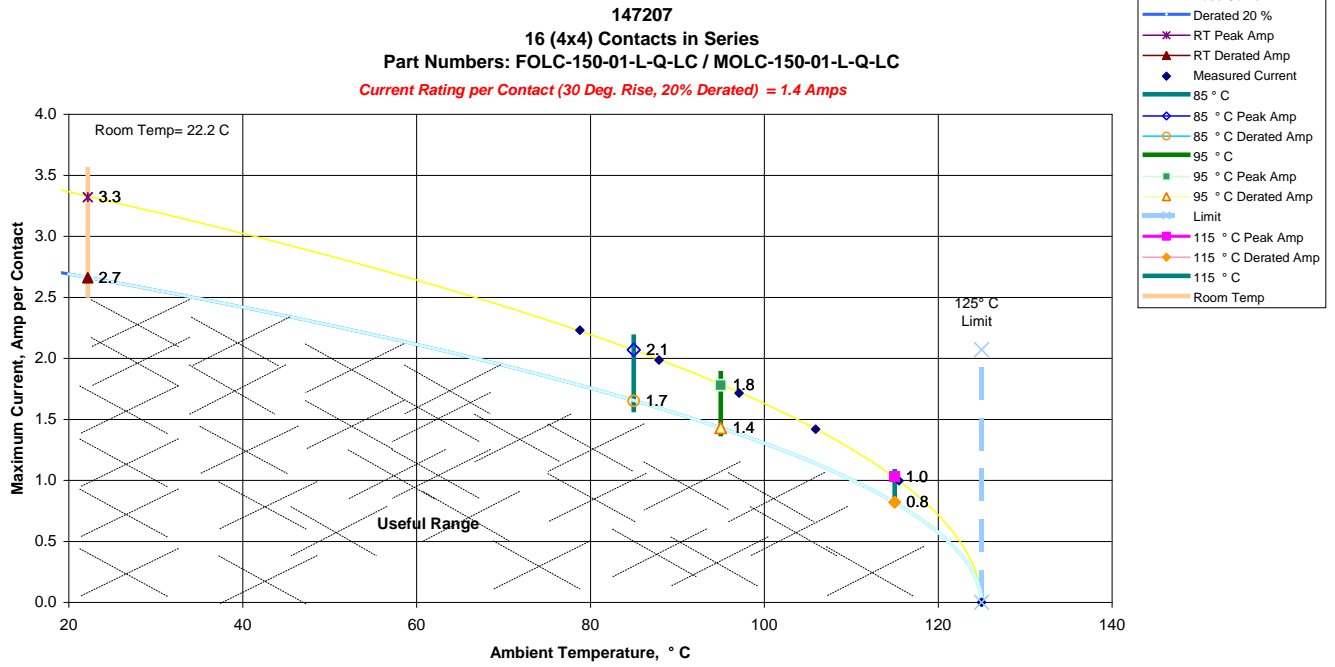


c. Linear configuration with 3 Adjacent Vertical rows powered

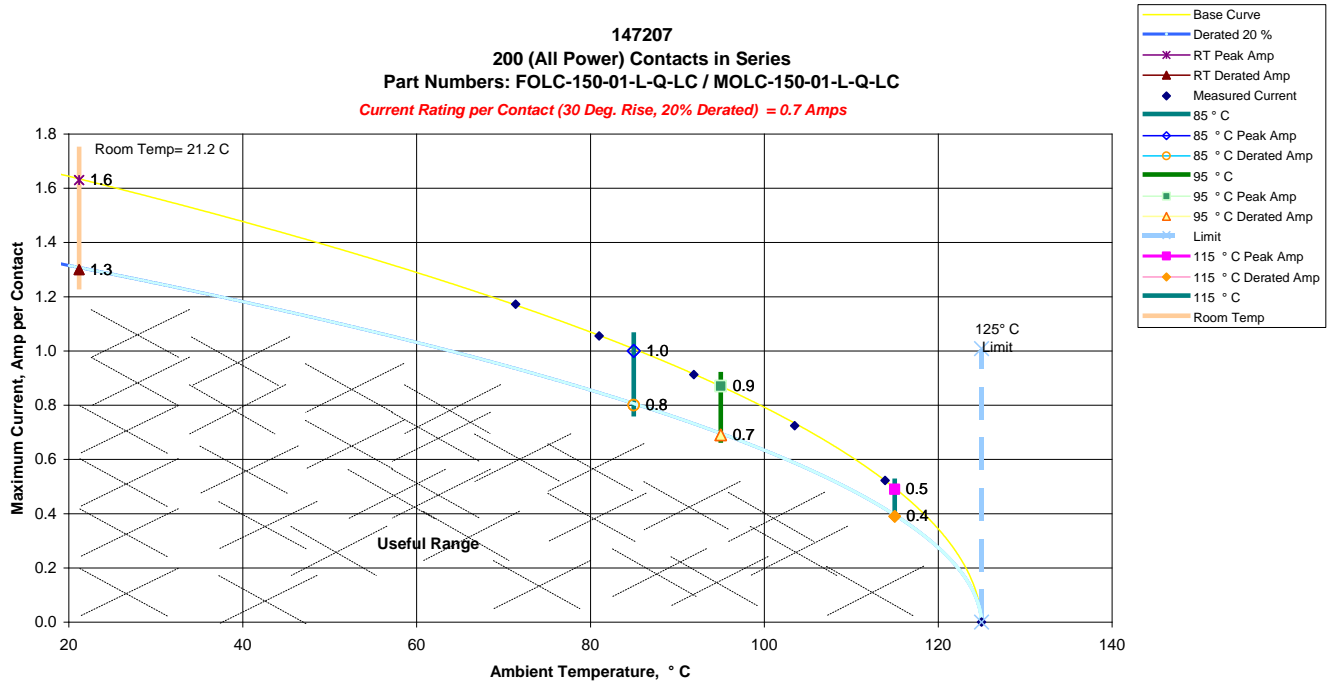


DATA SUMMARIES continued

d. Linear configuration with 4 Adjacent Vertical rows powered



e. Linear configuration with All Vertical rows powered



DATA SUMMARIES**CONTACT GAPS:****Durability:**

Initial		After 100 Cycles	
Units:	inch	Units:	inch
<i>Minimum</i>	0.0117	<i>Minimum</i>	0.0109
<i>Maximum</i>	0.0135	<i>Maximum</i>	0.0131
<i>Average</i>	0.0122	<i>Average</i>	0.0124
<i>St. Dev.</i>	0.0003	<i>St. Dev.</i>	0.0003
<i>Count</i>	96	<i>Count</i>	96

Thermal aging:

Initial		After Thermal	
Units:	inch	Units:	inch
<i>Minimum</i>	0.0114	<i>Minimum</i>	0.0120
<i>Maximum</i>	0.0128	<i>Maximum</i>	0.0133
<i>Average</i>	0.0121	<i>Average</i>	0.0126
<i>St. Dev.</i>	0.0003	<i>St. Dev.</i>	0.0003
<i>Count</i>	96	<i>Count</i>	96

Normal force initial:

Initial	
Units:	inch
<i>Minimum</i>	0.0118
<i>Maximum</i>	0.0124
<i>Average</i>	0.0122
<i>St. Dev.</i>	0.0002
<i>Count</i>	12

Normal force after thermal:

Initial		After Thermal	
Units:	inches	Units:	inches
<i>Minimum</i>	0.0119	<i>Minimum</i>	0.0124
<i>Maximum</i>	0.0126	<i>Maximum</i>	0.0129
<i>Average</i>	0.0123	<i>Average</i>	0.0126
<i>St. Dev.</i>	0.0002	<i>St. Dev.</i>	0.0002
<i>Count</i>	12	<i>Count</i>	12

DATA SUMMARIES Continued**MATING/UNMATING FORCE:****Mating/Unmating durability (FOLC-150-01-L-Q-LC/MOLC-150-01-L-Q-LC):**

	Initial				25 Cycles			
	Mating		Unmating		Mating		Unmating	
	Newton's	Force (Lbs)	Newton's	Force (Lbs)	Newton's	Force (Lbs)	Newton's	Force (Lbs)
Minimum	136.51	30.69	102.84	23.12	125.97	28.32	97.81	21.99
Maximum	168.94	37.98	134.02	30.13	146.74	32.99	122.28	27.49
Average	154.28	34.69	121.36	27.28	137.49	30.91	107.03	24.06
St Dev	10.85	2.44	9.90	2.23	6.85	1.54	9.43	2.12
Count	8	8	8	8	8	8	8	8
	50 Cycles				75 Cycles			
	Mating		Unmating		Mating		Unmating	
	Newton's	Force (Lbs)	Newton's	Force (Lbs)	Newton's	Force (Lbs)	Newton's	Force (Lbs)
Minimum	137.35	30.88	102.13	22.96	148.39	33.36	107.55	24.18
Maximum	158.79	35.70	131.66	29.60	171.16	38.48	139.44	31.35
Average	148.70	33.43	114.19	25.67	158.80	35.70	121.59	27.34
St Dev	7.27	1.63	10.72	2.41	7.98	1.79	11.78	2.65
Count	8	8	8	8	8	8	8	8
	100 Cycles				After Humidity			
	Mating		Unmating		Mating		Unmating	
	Newton's	Force (Lbs)	Newton's	Force (Lbs)	Newton's	Force (Lbs)	Newton's	Force (Lbs)
Minimum	157.10	35.32	112.18	25.22	92.92	20.89	74.55	16.76
Maximum	181.21	40.74	144.65	32.52	132.51	29.79	103.10	23.18
Average	168.23	37.82	127.90	28.75	109.15	24.54	84.81	19.07
St Dev	8.62	1.94	11.71	2.63	11.35	2.55	8.84	1.99
Count	8	8	8	8	8	8	8	8

DATA SUMMARIES Continued**Mating/Unmating Basic (FOLC-135-01-L-Q-LC/MOLC-135-01-L-Q-LC):**

	Initial				25 Cycles			
	Mating		Unmating		Mating		Unmating	
	Newton	Force (Lbs)	Newton	Force (Lbs)	Newton	Force (Lbs)	Newton	Force (Lbs)
Minimum	129.17	29.04	103.50	23.27	112.40	25.27	90.03	20.24
Maximum	154.08	34.64	126.50	28.44	145.05	32.61	126.41	28.42
Average	139.94	31.46	115.11	25.88	127.99	28.78	107.46	24.16
St Dev	9.14	2.06	8.63	1.94	13.58	3.05	15.36	3.45
Count	8	8	8	8	8	8	8	8
	50 Cycles				75 Cycles			
	Mating		Unmating		Mating		Unmating	
	Newton	Force (Lbs)	Newton	Force (Lbs)	Newton	Force (Lbs)	Newton	Force (Lbs)
Minimum	118.85	26.72	94.34	21.21	126.06	28.34	98.66	22.18
Maximum	160.39	36.06	125.39	28.19	174.98	39.34	129.44	29.10
Average	138.84	31.21	111.25	25.01	149.27	33.56	115.86	26.05
St Dev	16.11	3.62	13.00	2.92	17.85	4.01	12.77	2.87
Count	8	8	8	8	8	8	8	8
	100 Cycles							
	Mating		Unmating					
	Newton	Force (Lbs)	Newton	Force (Lbs)				
Minimum	132.37	29.76	103.37	23.24				
Maximum	183.75	41.31	132.33	29.75				
Average	158.20	35.57	120.49	27.09				
St Dev	18.27	4.11	11.44	2.57				
Count	8	8	8	8				

DATA SUMMARIES Continued**Mating/Unmating Basic (FOLC-120-01-L-Q-LC/MOLC-120-01-L-Q-LC)**

	Initial				25 Cycles			
	Mating		Unmating		Mating		Unmating	
	Newton	Force (Lbs)	Newton	Force (Lbs)	Newton	Force (Lbs)	Newton	Force (Lbs)
Minimum	84.87	19.08	70.46	15.84	82.64	18.58	69.57	15.64
Maximum	91.54	20.58	87.89	19.76	94.34	21.21	89.94	20.22
Average	88.95	20.00	76.86	17.28	87.72	19.72	76.45	17.19
St Dev	1.95	0.44	5.46	1.23	4.91	1.10	6.74	1.51
Count	8	8	8	8	8	8	8	8
	50 Cycles				75 Cycles			
	Mating		Unmating		Mating		Unmating	
	Newton	Force (Lbs)	Newton	Force (Lbs)	Newton	Force (Lbs)	Newton	Force (Lbs)
Minimum	91.27	20.52	74.28	16.70	101.77	22.88	75.35	16.94
Maximum	100.70	22.64	90.47	20.34	109.51	24.62	92.38	20.77
Average	95.63	21.50	78.80	17.72	104.55	23.51	80.73	18.15
St Dev	3.10	0.70	5.15	1.16	2.53	0.57	5.11	1.15
Count	8	8	8	8	8	8	8	8
	100 Cycles							
	Mating		Unmating					
	Newton	Force (Lbs)	Newton	Force (Lbs)				
Minimum	104.44	23.48	77.31	17.38				
Maximum	113.87	25.60	91.18	20.50				
Average	109.05	24.52	80.99	18.21				
St Dev	3.04	0.68	4.33	0.97				
Count	8	8	8	8				

Thermal aging:

	Initial				After Thermals			
	Mating		Unmating		Mating		Unmating	
	Newton	Force (Lbs)	Newton	Force (Lbs)	Newton	Force (Lbs)	Newton	Force (Lbs)
Minimum	164.80	37.05	132.77	29.85	117.56	26.43	102.04	22.94
Maximum	215.15	48.37	154.92	34.83	161.37	36.28	135.40	30.44
Average	186.90	42.02	141.79	31.88	132.94	29.89	113.19	25.45
St Dev	17.12	3.85	7.64	1.72	14.83	3.33	11.23	2.53
Count	8	8	8	8	8	8	8	8

DATA SUMMARIES Continued**NORMAL FORCE****Back beams**

Initial	Deflections in inches Forces in Grams										
	<u>0.0005</u>	<u>0.0010</u>	<u>0.0015</u>	<u>0.0020</u>	<u>0.0025</u>	<u>0.0030</u>	<u>0.0035</u>	<u>0.0040</u>	<u>0.0045</u>	<u>0.0050</u>	<i>SET</i>
Averages	9.94	20.32	30.56	40.24	49.72	59.24	68.22	77.02	85.48	93.20	0.0004
Min	8.80	17.70	26.60	35.30	43.70	52.60	60.80	68.80	76.20	82.80	0.0002
Max	11.40	22.60	34.80	45.20	55.50	65.60	76.00	86.40	95.50	104.40	0.0007
St. Dev	1.244	2.269	3.680	4.686	5.471	6.402	7.406	8.152	8.717	9.623	0.0002
Count	5	5	5	5	5	5	5	5	5	5	5

After Thermal	Deflections in inches Forces in Grams										
	<u>0.0005</u>	<u>0.0010</u>	<u>0.0015</u>	<u>0.0020</u>	<u>0.0025</u>	<u>0.0030</u>	<u>0.0035</u>	<u>0.0040</u>	<u>0.0045</u>	<u>0.0050</u>	<i>SET</i>
Averages	10.66	21.49	31.56	41.38	50.74	59.86	68.76	77.26	85.08	92.80	0.0007
Min	8.50	17.00	25.40	33.60	41.60	49.70	57.70	65.20	72.70	80.20	0.0004
Max	16.30	31.80	46.80	60.60	74.30	87.40	99.90	110.80	119.90	127.40	0.0009
St. Dev	2.640	4.756	7.030	9.016	10.820	12.442	13.948	15.074	15.672	15.859	0.0002
Count	9	9	9	9	9	9	9	9	9	9	9

Main beams

Initial	Deflections in inches Forces in Grams										
	<u>0.0005</u>	<u>0.0010</u>	<u>0.0015</u>	<u>0.0020</u>	<u>0.0025</u>	<u>0.0030</u>	<u>0.0035</u>	<u>0.0040</u>	<u>0.0045</u>	<u>0.0050</u>	<i>SET</i>
Averages	10.54	21.00	31.25	41.10	50.70	59.85	68.48	76.63	84.59	92.25	0.0009
Min	8.00	16.40	26.50	36.00	44.00	52.10	59.10	65.60	72.70	79.80	0.0007
Max	13.10	24.70	36.30	47.80	58.00	68.10	77.60	86.10	95.00	103.30	0.0010
St. Dev	1.647	2.841	3.598	4.517	5.303	5.880	6.611	7.267	7.729	8.128	0.0001
Count	8	8	8	8	8	8	8	8	8	8	8

After Thermal	Deflections in inches Forces in Grams										
	<u>0.0005</u>	<u>0.0010</u>	<u>0.0015</u>	<u>0.0020</u>	<u>0.0025</u>	<u>0.0030</u>	<u>0.0035</u>	<u>0.0040</u>	<u>0.0045</u>	<u>0.0050</u>	<i>SET</i>
Averages	9.86	19.83	29.47	38.83	47.73	56.53	65.13	73.13	81.08	88.55	0.0006
Min	7.70	16.40	24.70	31.80	39.00	46.30	53.40	59.90	66.70	72.20	0.0005
Max	12.30	23.70	34.60	45.10	54.50	64.50	73.60	82.40	91.60	100.20	0.0012
St. Dev	1.188	2.101	2.971	4.061	4.852	5.706	6.617	7.216	8.032	8.877	0.0002
Count	12	12	12	12	12	12	12	12	12	12	12

DATA SUMMARIES Continued

INSULATION RESISTANCE (IR):

Pin to Pin			
	Mated	Unmated	Unmated
Minimum	FOLC/MOLC	FOLC	MOLC
Initial	50000	100000	100000
Thermal	50000	100000	50000
Humidity	25000	100000	25000

Row to Row			
	Mated	Unmated	Unmated
Minimum	FOLC/MOLC	FOLC	MOLC
Initial	100000	100000	100000
Thermal	50000	100000	50000
Humidity	100000	100000	50000

DIELECTRIC WITHSTANDING VOLTAGE (DWV):

Voltage Rating Summary	
Minimum	FOLC/MOLC
Break Down Voltage	660
Test Voltage	495
Working Voltage	165

Pin to Pin	
Initial Test Voltage	Passed
After Thermal Test Voltage	Passed
After Humidity Test Voltage	Passed

Row to Row	
Initial Test Voltage	Passed
After Thermal Test Voltage	Passed
After Humidity Test Voltage	Passed

S&V Event Detection

Shock and Vibration Event Detection Summary	
Contacts tested	60
Test Condition	C, 100g's, 6ms, Half-Sine
Shock Events	0
Test Condition	V-B, 7.56 rms g
Vibration Events	0
Total Events	0

DATA SUMMARIES Continued

LLCR Durability:

- 1) A total of 192 points were measured.
- 2) EIA-364-23, *Low Level Contact Resistance Test Procedure for Electrical Connectors and Sockets*.
- 3) A computer program, *LLCR 221.exe*, ensures repeatability for data acquisition.
- 4) The following guidelines are used to categorize the changes in LLCR as a result from stressing.
 - a. $\leq +5.0$ mOhms:----- Stable
 - b. $+5.1$ to $+10.0$ mOhms:----- Minor
 - c. $+10.1$ to $+15.0$ mOhms:----- Acceptable
 - d. $+15.1$ to $+50.0$ mOhms:----- Marginal
 - e. $+50.1$ to $+2000$ mOhms ----- Unstable
 - f. $>+2000$ mOhms:----- Open Failure

Date	8/1/2011	8/3/2011	8/17/2011	8/29/2011
Room Temp C	22	22	21	23
RH	58%	46%	47%	41%
Name	Troy Cook	Troy Cook	Troy Cook	Troy Cook
mOhm values	Actual	Delta	Delta	Delta
	Initial	100 Cycles	Thermal Shock	Humidity
Average	7.1	-0.1	-0.2	-0.2
St. Dev.	0.8	0.3	0.4	0.5
Min	5.4	-1.8	-3.1	-3.5
Max	10.7	1.3	0.6	0.9
Count	192	192	192	192

How many samples are being tested?	<u>8</u>
How many contacts are on each board?	<u>24</u>

	Stable	Minor	Acceptable	Marginal	Unstable	Open
100 Cycles	192	0	0	0	0	0
Thermal Shock	192	0	0	0	0	0
Humidity	192	0	0	0	0	0

DATA SUMMARIES Continued

LLCR thermal aging

- 1) A total of 192 points were measured
- 2) EIA-364-23, *Low Level Contact Resistance Test Procedure for Electrical Connectors and Sockets.*
- 3) A computer program, *LLCR 221.exe*, ensures repeatability for data acquisition.
- 4) The following guidelines are used to categorize the changes in LLCR as a result from stressing.
 - a. $\leq +5.0$ mOhms:----- Stable
 - b. $+5.1$ to $+10.0$ mOhms:----- Minor
 - c. $+10.1$ to $+15.0$ mOhms:----- Acceptable
 - d. $+15.1$ to $+50.0$ mOhms:----- Marginal
 - e. $+50.1$ to $+2000$ mOhms ----- Unstable
 - f. $>+2000$ mOhms:----- Open Failure

Date	8/2/2011	8/16/2011
Room Temp C	24	21
RH	42%	46%
Name	Troy Cook	Troy Cook
mOhm values	Actual	Delta
	Initial	Thermal Age
Average	6.5	-0.1
St. Dev.	0.6	0.2
Min	5.4	-1.3
Max	8.6	0.4
Count	192	192

How many samples are being tested?	<u>8</u>
How many contacts are on each board?	<u>24</u>

	Stable	Minor	Acceptable	Marginal	Unstable	Open
Thermal Age	192	0	0	0	0	0

DATA SUMMARIES Continued

LLCR GAS TIGHT:

- 1) A total of 192 points were measured
- 2) EIA-364-23, *Low Level Contact Resistance Test Procedure for Electrical Connectors and Sockets*.
- 3) A computer program, *LLCR 221.exe*, ensures repeatability for data acquisition.
- 4) The following guidelines are used to categorize the changes in LLCR as a result from stressing.
 - a. $\leq +5.0$ mOhms:----- Stable
 - b. $+5.1$ to $+10.0$ mOhms:----- Minor
 - c. $+10.1$ to $+15.0$ mOhms:----- Acceptable
 - d. $+15.1$ to $+50.0$ mOhms:----- Marginal
 - e. $+50.1$ to $+2000$ mOhms:----- Unstable
 - f. $>+2000$ mOhms:----- Open Failure

Date	7/25/2011	7/26/2011
Room Temp C	23	24
RH	38%	39%
Name	Troy Cook	Troy Cook
mOhm values	Actual Initial	Delta Gas Tight
Average	6.5	0.0
St. Dev.	0.7	0.1
Min	5.2	-0.5
Max	10.1	0.3
Count	192	192

How many samples are being tested?	<u>8</u>
How many contacts are on each board?	<u>24</u>

	Stable	Minor	Acceptable	Marginal	Unstable	Open
Gas Tight	192	0	0	0	0	0

DATA SUMMARIES Continued

LLCR S&V:

- 1) A total of 192 points were measured
- 2) EIA-364-23, *Low Level Contact Resistance Test Procedure for Electrical Connectors and Sockets.*
- 3) A computer program, *LLCR 221.exe*, ensures repeatability for data acquisition.
- 4) The following guidelines are used to categorize the changes in LLCR as a result from stressing.
 - a. $\leq +5.0$ mOhms:----- Stable
 - b. $+5.1$ to $+10.0$ mOhms:----- Minor
 - c. $+10.1$ to $+15.0$ mOhms:----- Acceptable
 - d. $+15.1$ to $+50.0$ mOhms:----- Marginal
 - e. $+50.1$ to $+2000$ mOhms:----- Unstable
 - f. $>+2000$ mOhms:----- Open Failure

Date	8/1/2011	8/11/2011
Room Temp C	24	22
RH	41%	39%
Name	Troy Cook	Troy Cook
mOhm values	Actual	Delta
	Initial	Shock / Vibe
Average	7.3	-0.1
St. Dev.	0.8	0.4
Min	5.6	-2.1
Max	9.8	1.2
Count	192	192

How many samples are being tested?	<u>8</u>
How many contacts are on each board?	<u>24</u>

	Stable	Minor	Acceptable	Marginal	Unstable	Open
Shock / Vibe	192	0	0	0	0	0

DATA**CONTACT GAPS****Durability:**

Initial								
Units: in								
Gap #	011	012	013	014	015	016	017	018
1	0.0121	0.0122	0.0119	0.0123	0.0121	0.0120	0.0123	0.0126
2	0.0123	0.0128	0.0121	0.0117	0.0122	0.0120	0.0125	0.0119
3	0.0121	0.0125	0.0123	0.0120	0.0123	0.0121	0.0123	0.0121
4	0.0117	0.0123	0.0121	0.0125	0.0119	0.0120	0.0126	0.0121
5	0.0122	0.0127	0.0119	0.0124	0.0130	0.0117	0.0121	0.0123
6	0.0121	0.0132	0.0120	0.0122	0.0123	0.0118	0.0120	0.0123
7	0.0121	0.0135	0.0121	0.0123	0.0126	0.0121	0.0122	0.0121
8	0.0120	0.0132	0.0121	0.0125	0.0121	0.0120	0.0125	0.0124
9	0.0122	0.0123	0.0122	0.0120	0.0123	0.0124	0.0126	0.0121
10	0.0122	0.0124	0.0122	0.0121	0.0123	0.0121	0.0122	0.0124
11	0.0122	0.0121	0.0120	0.0125	0.0124	0.0119	0.0120	0.0121
12	0.0121	0.0125	0.0121	0.0122	0.0120	0.0126	0.0119	0.0125
After 100 cycles								
Units: in								
Gap #	011	012	013	014	015	016	017	018
1	0.0124	0.0130	0.0124	0.0126	0.0121	0.0125	0.0125	0.0126
2	0.0122	0.0117	0.0123	0.0129	0.0127	0.0126	0.0125	0.0123
3	0.0121	0.0118	0.0126	0.0124	0.0126	0.0124	0.0123	0.0124
4	0.0121	0.0131	0.0124	0.0124	0.0128	0.0124	0.0124	0.0122
5	0.0122	0.0110	0.0119	0.0124	0.0122	0.0123	0.0125	0.0125
6	0.0121	0.0126	0.0122	0.0127	0.0123	0.0124	0.0125	0.0123
7	0.0120	0.0130	0.0126	0.0130	0.0126	0.0125	0.0124	0.0121
8	0.0121	0.0128	0.0123	0.0127	0.0124	0.0124	0.0126	0.0123
9	0.0124	0.0122	0.0124	0.0127	0.0127	0.0125	0.0129	0.0119
10	0.0125	0.0128	0.0121	0.0128	0.0129	0.0125	0.0127	0.0123
11	0.0125	0.0124	0.0127	0.0123	0.0127	0.0125	0.0127	0.0124
12	0.0125	0.0109	0.0123	0.0125	0.0125	0.0126	0.0127	0.0121

DATA Continued**Thermal aging:**

Initial								
Units: inch								
Gap #	011	012	013	014	015	016	017	018
1	0.0120	0.0121	0.0122	0.0120	0.0121	0.0122	0.0122	0.0124
2	0.0121	0.0124	0.0122	0.0122	0.0121	0.0126	0.0118	0.0121
3	0.0121	0.0120	0.0120	0.0121	0.0123	0.0122	0.0116	0.0123
4	0.0123	0.0118	0.0120	0.0119	0.0124	0.0121	0.0120	0.0121
5	0.0122	0.0122	0.0115	0.0119	0.0118	0.0124	0.0122	0.0117
6	0.0120	0.0121	0.0114	0.0121	0.0118	0.0124	0.0121	0.0124
7	0.0122	0.0122	0.0118	0.0121	0.0119	0.0123	0.0123	0.0125
8	0.0121	0.0122	0.0120	0.0121	0.0120	0.0119	0.0122	0.0128
9	0.0120	0.0117	0.0117	0.0119	0.0118	0.0115	0.0121	0.0120
10	0.0120	0.0126	0.0121	0.0119	0.0122	0.0126	0.0118	0.0125
11	0.0122	0.0121	0.0119	0.0122	0.0119	0.0125	0.0121	0.0114
12	0.0120	0.0122	0.0116	0.0120	0.0120	0.0126	0.0121	0.0117
After thermal								
Units: inch								
Gap #	011	012	013	014	015	016	017	018
1	0.0125	0.0123	0.0127	0.0124	0.0129	0.0127	0.0124	0.0129
2	0.0126	0.0131	0.0128	0.0124	0.0128	0.0129	0.0128	0.0126
3	0.0128	0.0125	0.0127	0.0123	0.0127	0.0131	0.0124	0.0128
4	0.0128	0.0129	0.0125	0.0125	0.0130	0.0129	0.0126	0.0132
5	0.0125	0.0126	0.0127	0.0122	0.0124	0.0126	0.0124	0.0124
6	0.0129	0.0125	0.0126	0.0124	0.0122	0.0126	0.0126	0.0127
7	0.0127	0.0127	0.0125	0.0123	0.0125	0.0127	0.0120	0.0124
8	0.0127	0.0125	0.0131	0.0127	0.0131	0.0127	0.0123	0.0125
9	0.0129	0.0122	0.0126	0.0122	0.0125	0.0127	0.0127	0.0132
10	0.0131	0.0126	0.0123	0.0126	0.0126	0.0127	0.0127	0.0126
11	0.0131	0.0133	0.0129	0.0125	0.0128	0.0126	0.0126	0.0125
12	0.0129	0.0127	0.0125	0.0125	0.0124	0.0126	0.0126	0.0123

DATA continued**Normal force initial:**

Initial	
Units:inch	
Pos.#	B1
1	0.0123
2	0.0123
3	0.0124
4	0.0121
5	0.0122
6	0.0124
7	0.0121
8	0.0120
9	0.0124
10	0.0120
11	0.0119
12	0.0118

Normal force thermal aging:

Initial	
Units: inch	
Pos.#	B2
1	0.0124
2	0.0121
3	0.0122
4	0.0126
5	0.0125
6	0.0122
7	0.0119
8	0.0124
9	0.0124
10	0.0121
11	0.0124
12	0.0122
After thermal age	
Units:inch	
Pos.#	B2
1	0.0126
2	0.0127
3	0.0125
4	0.0129
5	0.0125
6	0.0124
7	0.0125
8	0.0124
9	0.0129
10	0.0125
11	0.0127
12	0.0126

DATA continued**MATING\UNMATING FORCE****Mating/Unmating durability: (FOLC-150-01-L-Q-LC/MOLC-150-01-L-Q-LC)**

Sample#	Initial		After 25 Cycles		After 50 Cycles		After 75 Cycles		After 100 Cycles		After Humidity	
	Mating	Unmating	Mating	Unmating	Mating	Unmating	Mating	Unmating	Mating	Unmating	Mating	Unmating
1	30.69	23.12	29.95	21.99	32.14	22.96	34.01	24.18	35.62	25.22	23.66	18.83
2	37.98	27.42	32.99	23.64	35.70	25.19	38.48	27.49	40.74	29.68	25.04	23.18
3	35.60	27.04	30.67	23.84	33.15	24.92	35.53	26.16	37.68	27.38	22.75	16.76
4	34.60	27.19	31.19	23.34	33.60	25.37	35.87	27.15	37.94	28.54	20.89	16.95
5	36.95	30.13	30.95	27.19	33.87	29.13	35.96	31.17	38.69	32.52	24.71	19.83
6	35.74	30.13	32.94	27.49	35.52	29.60	37.91	31.35	39.94	32.30	29.79	19.43
7	32.01	26.34	28.32	22.32	30.88	24.33	33.36	26.24	35.32	28.10	24.34	18.77
8	33.92	26.90	30.27	22.69	32.58	23.87	34.50	24.95	36.65	26.29	25.14	18.79

Mating/Unmating Basic (FOLC-135-01-L-Q-LC/MOLC-135-01-L-Q-LC):

Sample#	Initial		25 Cycles		50 Cycles		75 Cycles		100 Cycles	
	Mating	Unmating	Mating	Unmating	Mating	Unmating	Mating	Unmating	Mating	Unmating
1	34.04	28.44	32.61	27.41	36.06	28.07	39.34	29.10	41.31	29.63
2	34.64	27.48	28.59	25.48	31.34	26.84	33.92	28.46	36.59	29.75
3	29.48	25.89	32.11	27.37	34.65	26.97	37.21	27.70	39.22	28.08
4	30.36	27.95	31.95	28.42	34.86	28.19	36.85	28.57	38.66	28.93
5	31.78	25.72	27.21	23.32	29.81	24.85	32.58	26.18	34.72	27.56
6	29.04	24.32	25.34	20.24	26.72	21.21	28.34	22.18	29.76	23.24
7	30.29	23.96	25.27	20.39	27.11	21.57	28.86	22.34	30.88	23.64
8	32.06	23.27	27.12	20.64	29.16	22.39	31.37	23.86	33.40	25.87

Mating/Unmating Basic (FOLC-120-01-L-Q-LC/MOLC-120-01-L-Q-LC):

Sample#	Initial		25 Cycles		50 Cycles		75 Cycles		100 Cycles	
	Mating	Unmating	Mating	Unmating	Mating	Unmating	Mating	Unmating	Mating	Unmating
1	20.00	17.42	18.64	16.60	20.93	17.44	23.15	17.89	24.44	17.85
2	19.90	16.34	18.58	15.94	20.52	16.70	22.88	16.94	23.78	17.38
3	19.08	16.45	19.22	15.64	21.16	17.07	23.10	17.95	23.48	18.27
4	20.58	17.41	18.71	16.42	21.11	16.86	23.63	17.47	24.96	17.80
5	20.19	19.76	20.91	20.22	21.68	20.34	23.24	20.77	24.37	20.50
6	19.92	15.84	19.70	16.68	21.80	17.42	24.00	17.85	25.02	17.82
7	20.34	16.95	20.80	17.55	22.64	17.77	24.62	17.80	25.60	17.73
8	19.97	18.06	21.21	18.45	22.15	18.12	23.42	18.52	24.49	18.32

DATA Continued**Thermal aging:**

<u>Sample#</u>	Initial		After Thermals	
	<u>Mating</u>	<u>Unmating</u>	<u>Mating</u>	<u>Unmating</u>
1	37.05	29.85	26.43	22.94
2	38.51	31.97	28.81	25.63
3	40.77	30.79	28.34	23.30
4	48.37	32.30	36.28	30.44
5	45.58	33.58	31.01	26.08
6	39.56	31.69	28.32	24.86
7	41.84	30.00	32.93	27.15
8	44.48	34.83	26.98	23.18

DATA Continued**NORMAL FORCE****Back beams**

Initial	Deflections in inches, Forces in Grams										
Sample #	0.0005	0.0010	0.0015	0.0020	0.0025	0.0030	0.0035	0.0040	0.0045	0.0050	SET
1	8.8	17.7	26.6	35.3	43.7	52.6	60.8	69.0	77.4	84.4	0.0002
2	8.8	18.5	27.3	35.7	44.7	53.0	60.8	68.8	76.2	82.8	0.0003
3	9.6	20.2	30.4	40.5	50.0	59.4	68.3	77.1	85.6	93.5	0.0004
4	11.1	22.6	33.7	44.5	54.7	65.6	76.0	86.4	95.5	104.4	0.0004
5	11.4	22.6	34.8	45.2	55.5	65.6	75.2	83.8	92.7	100.9	0.0007

After Thermal	Deflections in inches, Forces in Grams											
Sample #	0.0005	0.0010	0.0015	0.0020	0.0025	0.0030	0.0035	0.0040	0.0045	0.0050	SET	
1	16.3	31.8	46.8	60.6	74.3	87.4	99.9	110.8	119.9	127.4	0.0008	
2	13.9	27.0	39.7	52.5	63.4	73.7	83.9	93.7	102.3	111.1	0.0009	
3	9.7	19.4	28.0	37.0	45.6	53.6	61.3	69.2	76.2	83.4	0.0008	
4	10.1	20.3	29.7	38.4	47.0	55.7	64.4	72.4	80.1	87.9	0.0007	
5	10.0	20.1	30.0	39.0	48.5	57.2	65.4	74.4	82.0	90.3	0.0006	
6	9.4	20.2	29.8	39.0	47.2	55.9	64.2	72.0	79.8	87.2	0.0008	
7	8.9	19.2	28.0	37.3	45.8	54.3	63.0	71.0	78.5	86.2	0.0006	
8	9.1	18.4	26.6	35.0	43.3	51.2	59.0	66.6	74.2	81.5	0.0004	
9	8.5	17.0	25.4	33.6	41.6	49.7	57.7	65.2	72.7	80.2	0.0004	

Main beams:

Initial	Deflections in inches, Forces in Grams										
Sample #	0.0005	0.0010	0.0015	0.0020	0.0025	0.0030	0.0035	0.0040	0.0045	0.0050	SET
1	8.0	16.4	26.5	36.1	45.5	54.4	62.6	70.4	77.9	84.7	0.0010
2	10.7	21.4	31.9	41.8	52.0	61.2	69.8	78.6	86.9	94.4	0.0007
3	10.5	20.5	30.7	39.7	49.1	58.1	66.1	74.5	82.6	90.3	0.0010
4	11.2	22.1	32.0	42.8	52.3	61.9	71.1	79.8	88.2	96.3	0.0009
5	9.0	18.4	27.5	36.0	44.0	52.1	59.1	65.6	72.7	79.8	0.0008
6	9.7	20.0	29.1	37.9	46.9	55.6	64.6	72.3	79.9	87.8	0.0009
7	12.1	24.5	36.3	47.8	58.0	67.4	76.9	85.7	93.5	101.4	0.0007
8	13.1	24.7	36.0	46.7	57.8	68.1	77.6	86.1	95.0	103.3	0.0009

After Thermal	Deflections in inches, Forces in Grams											
Sample #	0.0005	0.0010	0.0015	0.0020	0.0025	0.0030	0.0035	0.0040	0.0045	0.0050	SET	
1	12.3	23.7	34.6	45.1	54.5	64.5	73.6	81.6	89.8	97.8	0.0012	
2	9.1	18.4	27.8	36.3	45.1	53.9	61.8	70.6	78.1	85.8	0.0005	
3	9.2	18.3	26.6	35.1	43.1	50.9	58.6	66.6	73.0	79.7	0.0007	
4	8.7	17.2	25.7	34.1	42.1	49.9	57.1	64.3	71.4	78.4	0.0006	
5	7.7	16.4	24.7	31.8	39.0	46.3	53.4	59.9	66.7	72.2	0.0007	
6	10.0	20.8	30.3	40.0	49.6	59.0	68.1	76.7	85.3	93.4	0.0005	
7	9.9	20.0	30.2	39.5	49.2	58.0	67.5	75.6	83.7	91.3	0.0005	
8	10.5	21.2	30.9	41.5	50.4	59.4	68.5	76.4	85.0	92.9	0.0006	
9	9.5	19.8	29.0	38.3	47.0	55.5	63.9	71.2	79.2	86.1	0.0005	
10	9.9	19.0	28.8	37.7	46.3	54.7	63.1	70.6	78.2	85.2	0.0007	
11	10.3	21.0	32.0	42.8	52.7	62.8	72.5	81.7	90.9	99.6	0.0005	
12	11.2	22.2	33.0	43.7	53.8	63.4	73.4	82.4	91.6	100.2	0.0007	

DATA continued**INSULATION RESISTANCE (IR):**

Initial Insulation Resistance			
Measured In Meg Ohms			

Pin to Pin			
Mated		A	Unmated B
X		X	X
Sample#	FOLC/MOLC	FOLC	MOLC
147207-031	50000	100000	100000
147207-032	100000	100000	100000

Row to Row			
Mated		A	Unmated B
X		X	X
Sample#	FOLC/MOLC	FOLC	MOLC
147207-037	100000	100000	100000
147207-038	100000	100000	100000

Thermal Insulation Resistance			
Measured In Meg Ohms			

Pin to Pin			
Mated		A	Unmated B
X		X	X
Sample#	FOLC/MOLC	FOLC	MOLC
147207-031	100000	100000	100000
147207-032	50000	100000	50000

Row to Row			
Mated		A	Unmated B
X		X	X
Sample#	FOLC/MOLC	FOLC	MOLC
147207-037	100000	100000	100000
147207-038	50000	100000	50000

DATA continued**Humidity Insulation Resistance**

Measured In Meg Ohms

Pin to Pin			
	Mated	A Unmated	B
	X	X	X
Sample#	FOLC/MOLC	FOLC	MOLC
147207-031	25000	100000	25000
147207-032	100000	100000	100000

Row to Row			
	Mated	A Unmated	B
	X	X	X
Sample#	FOLC/MOLC	FOLC	MOLC
147207-037	100000	100000	50000
147207-038	100000	100000	100000

DIELECTRIC WITHSTANDING VOLTAGE (DWV):**Initial Breakdown Voltage**Test Voltage *Until Breakdown Occurs*

Pin to Pin			
	Mated	A Unmated	B
	X		
Sample#	FOLC/MOLC	FOLC	MOLC
147207-027	1080	980	900
147207-028	920	1100	900

Row to Row			
	Mated	A Unmated	B
	X		
Sample#	FOLC/MOLC	FOLC	MOLC
147207-034	660	1020	1100
147207-035	740	720	880

DATA continued

Initial DWV	
Test Voltage=	1050

Pin to Pin			
	Mated	A	Unmated B
Sample#	FOLC/MOLC	FOLC	MOLC
147207-031	495	495	495
147207-032	495	495	495

Row to Row			
	Mated	A	Unmated B
Sample#	FOLC/MOLC	FOLC	MOLC
147207-037	495	495	495
147207-038	495	495	495

Thermal Test Voltage	
Test Voltage=	1050

Pin to Pin			
	Mated	A	Unmated B
Sample#	FOLC/MOLC	FOLC	MOLC
147207-031	495	495	495
147207-032	495	495	495

Row to Row			
	Mated	A	Unmated B
Sample#	FOLC/MOLC	FOLC	MOLC
147207-037	495	495	495
147207-038	495	495	495

DATA continued

Humidity Test Voltage	
Test Voltage=	1050

Pin to Pin			
	Mated	A	Unmated B
Sample#	FOLC/MOLC	FOLC	MOLC
147207-031	495	495	495
147207-032	495	495	495

Row to Row			
	Mated	A	Unmated B
Sample#	FOLC/MOLC	FOLC	MOLC
147207-037	495	495	495
147207-038	495	495	495

DATA Continued**LLCR Durability:**

	mOhm values	Actual	Delta	Delta	Delta
Board	Position	Initial	100 Cycles	Thermal	Humidity
1	P1	7.5	0.0	-0.3	-0.3
1	P2	7.2	0.4	-0.2	0.0
1	P3	7.1	-0.1	-0.4	-0.4
1	P4	7.7	-0.5	-0.7	-0.7
1	P5	6.1	0.0	0.0	0.1
1	P6	6.7	-0.7	-0.7	-0.4
1	P7	5.5	0.1	0.0	0.6
1	P8	6.1	-0.1	-0.3	0.3
1	P9	7.2	-0.1	-0.2	0.0
1	P10	7.9	0.0	-0.4	-0.3
1	P11	7.9	-0.5	-0.7	-0.7
1	P12	7.0	-0.1	-0.2	-0.2
1	P13	7.8	0.1	-0.1	0.1
1	P14	7.4	-0.1	-0.3	-0.3
1	P15	7.5	-0.1	-0.4	-0.4
1	P16	7.4	-0.1	-0.2	-0.1
1	P17	6.9	0.0	-0.2	-0.3
1	P18	6.6	0.3	0.2	0.3
1	P19	7.6	0.0	0.1	0.4
1	P20	6.9	0.2	0.2	0.5
1	P21	6.7	-0.3	-0.4	-0.6
1	P22	7.0	0.3	0.2	0.1
1	P23	6.8	0.1	-0.3	-0.2
1	P24	6.7	0.0	-0.1	0.0
2	P1	6.2	0.0	-0.7	-0.8
2	P2	7.1	-0.6	-1.0	-1.0
2	P3	6.5	0.2	-0.8	-0.7
2	P4	7.4	-0.4	-1.4	-0.8
2	P5	6.6	-0.2	-0.1	0.1
2	P6	7.6	-0.2	-0.4	-0.1
2	P7	7.2	0.0	-0.2	0.0
2	P8	7.8	1.3	-0.6	-0.6
2	P9	6.7	-0.2	-0.3	-0.2
2	P10	7.2	0.1	-0.1	-0.1
2	P11	7.1	-0.7	-1.2	-1.1
2	P12	6.3	-0.1	-0.4	-0.4
2	P13	6.8	-0.6	-0.7	-0.8
2	P14	6.4	0.1	-0.2	-0.2
2	P15	6.2	-0.2	-0.2	-0.3
2	P16	5.8	-0.2	-0.4	-0.4
2	P17	5.7	0.3	0.1	0.0
2	P18	7.3	0.6	-0.6	-0.8
2	P19	5.6	-0.3	-0.4	-0.3
2	P20	5.8	0.0	-0.2	0.1
2	P21	5.4	0.1	0.0	-0.1

2	P22	6.1	0.2	-0.6	-0.7
2	P23	5.6	-0.1	-0.3	-0.3
2	P24	5.7	-0.2	-0.4	-0.5
3	P1	6.9	0.1	-0.2	0.0
3	P2	6.6	0.4	0.2	0.1
3	P3	7.0	0.3	0.0	0.3
3	P4	6.5	0.1	-0.2	0.4
3	P5	6.7	0.2	0.1	0.3
3	P6	5.5	-0.2	0.1	0.9
3	P7	5.7	0.4	0.4	0.3
3	P8	6.7	0.2	0.1	0.4
3	P9	6.6	0.3	0.2	0.1
3	P10	7.2	0.4	0.1	0.2
3	P11	7.3	-0.6	-0.9	0.1
3	P12	6.4	0.6	0.3	0.4
3	P13	6.7	0.0	0.0	0.1
3	P14	6.9	0.1	0.0	0.1
3	P15	7.9	0.0	-0.1	0.1
3	P16	6.9	0.1	-0.2	0.3
3	P17	6.6	0.0	-0.3	-0.2
3	P18	6.8	-0.2	-0.3	0.3
3	P19	6.4	0.2	-0.3	0.0
3	P20	6.4	0.1	-0.2	0.2
3	P21	6.4	0.5	0.4	0.1
3	P22	6.5	0.0	0.0	0.1
3	P23	6.7	0.0	-0.2	0.0
3	P24	6.8	0.2	0.1	0.3
4	P1	6.3	0.3	0.0	0.0
4	P2	6.8	0.5	0.0	-0.1
4	P3	6.4	0.1	-0.1	-0.1
4	P4	6.7	-0.4	-0.3	-0.3
4	P5	5.9	0.0	0.4	0.2
4	P6	5.9	0.2	0.5	0.5
4	P7	8.6	-1.8	-1.8	-1.8
4	P8	7.6	-0.9	-0.7	-1.0
4	P9	6.2	0.2	0.1	0.0
4	P10	7.4	-0.7	-1.0	-1.1
4	P11	6.8	0.0	-0.3	-0.4
4	P12	6.9	0.0	-0.3	-0.4
4	P13	6.3	-0.2	-0.3	-0.3
4	P14	7.3	0.0	-0.1	-0.1
4	P15	6.1	0.0	0.0	0.0
4	P16	6.7	-0.3	-0.6	-0.5
4	P17	6.3	0.0	-0.2	-0.2
4	P18	5.9	0.0	0.1	0.0
4	P19	7.2	-0.2	-0.2	-0.3
4	P20	7.0	-0.3	-0.5	-0.3
4	P21	6.5	-0.1	0.0	0.1
4	P22	6.9	-0.3	-0.6	-0.5
4	P23	6.8	-0.2	-0.4	-0.4

Part description: FOLC/MOLC

4	P24	6.6	0.1	-0.2	-0.2
5	P1	7.7	-0.2	-0.4	-0.4
5	P2	7.0	0.0	-0.2	-0.2
5	P3	7.4	0.4	0.3	0.3
5	P4	6.5	0.0	0.0	-0.1
5	P5	8.5	0.1	0.0	-0.1
5	P6	8.3	-0.1	-0.3	-0.3
5	P7	6.8	0.1	0.2	0.2
5	P8	7.4	-0.3	-0.2	-0.4
5	P9	6.8	0.1	0.1	0.0
5	P10	8.0	-0.8	-1.1	-1.0
5	P11	7.6	-0.2	-0.4	-0.4
5	P12	6.8	-0.1	-0.2	-0.3
5	P13	7.4	-0.2	-0.4	-0.5
5	P14	7.4	-0.1	-0.4	-0.4
5	P15	7.6	-0.3	-0.5	-0.5
5	P16	7.1	0.0	0.0	-0.2
5	P17	7.9	-0.3	-0.4	-0.6
5	P18	7.7	-0.5	-0.4	-0.6
5	P19	7.1	0.0	0.0	-0.1
5	P20	6.4	0.1	0.3	0.3
5	P21	7.5	-0.5	-0.2	-0.2
5	P22	7.2	0.1	0.6	0.2
5	P23	7.1	-0.4	-0.2	-0.5
5	P24	7.4	-0.1	0.0	-0.1
6	P1	6.7	-0.4	-0.4	-0.6
6	P2	7.5	-0.4	-0.7	-0.9
6	P3	7.4	-0.1	-0.6	-0.7
6	P4	8.2	-0.7	-1.2	-1.5
6	P5	7.4	-0.3	-0.1	-0.3
6	P6	7.7	-0.4	-0.4	-0.5
6	P7	8.8	-0.4	-0.3	-0.6
6	P8	7.6	-0.2	-0.1	-0.5
6	P9	8.0	-0.2	0.4	0.1
6	P10	7.1	-0.6	0.0	-0.4
6	P11	6.9	0.0	0.1	-0.3
6	P12	6.5	0.1	0.3	0.0
6	P13	6.6	0.0	-0.2	-0.2
6	P14	7.0	0.0	-0.1	-0.2
6	P15	7.0	0.0	-0.1	-0.2
6	P16	6.6	-0.5	-0.9	-0.9
6	P17	6.7	0.3	0.0	-0.1
6	P18	6.1	0.3	0.3	0.1
6	P19	6.3	0.3	0.3	0.1
6	P20	6.0	0.1	0.2	0.0
6	P21	6.3	0.1	0.0	-0.2
6	P22	7.1	0.0	-0.2	-0.6
6	P23	6.7	-0.2	-0.4	-0.4
6	P24	7.1	-0.3	-0.6	-0.7
7	P1	8.6	-0.1	-0.5	-0.5

7	P2	7.1	-0.1	-0.2	-0.2
7	P3	7.6	0.5	0.2	0.2
7	P4	7.4	-0.1	-0.4	-0.3
7	P5	7.6	0.3	0.3	0.1
7	P6	7.6	0.0	0.0	-0.2
7	P7	7.3	0.2	0.2	0.2
7	P8	7.9	-0.1	0.0	-0.1
7	P9	7.8	-0.5	-0.5	-0.5
7	P10	10.3	0.7	0.4	0.3
7	P11	8.4	-0.5	-0.6	-0.4
7	P12	7.9	-0.1	0.0	-0.2
7	P13	7.7	0.1	-0.4	-0.2
7	P14	7.5	0.3	-0.1	0.1
7	P15	8.2	-0.5	-0.6	-0.5
7	P16	7.4	0.3	0.1	0.0
7	P17	7.4	-0.2	-0.4	-0.4
7	P18	7.5	-0.2	0.1	-0.1
7	P19	7.6	-0.1	-0.4	-0.3
7	P20	6.7	0.2	0.1	0.0
7	P21	7.7	0.1	0.4	0.0
7	P22	7.4	0.3	0.4	-0.1
7	P23	10.7	-0.4	-3.1	-3.5
7	P24	7.9	-0.5	-0.5	-0.4
8	P1	7.1	0.1	-0.3	-0.3
8	P2	9.2	-0.3	-0.6	-0.7
8	P3	7.6	0.1	-0.1	-0.2
8	P4	7.1	-0.1	-0.1	-0.5
8	P5	7.6	0.2	0.3	0.1
8	P6	7.8	0.0	0.2	0.0
8	P7	7.6	0.2	0.2	0.3
8	P8	9.6	0.2	-0.1	-0.4
8	P9	7.5	0.0	0.0	-0.1
8	P10	8.5	-0.4	-0.6	-0.9
8	P11	9.2	-0.6	-0.9	-1.1
8	P12	6.9	0.1	-0.1	0.0
8	P13	6.9	-0.1	-0.2	-0.2
8	P14	7.1	0.0	-0.2	-0.2
8	P15	7.3	0.0	-0.2	-0.2
8	P16	7.1	-0.2	-0.5	-0.5
8	P17	6.7	-0.1	-0.3	-0.3
8	P18	6.3	0.1	0.0	-0.2
8	P19	7.0	-0.2	-0.2	-0.2
8	P20	7.0	-0.2	-0.1	-0.1
8	P21	8.8	-1.4	-1.6	-2.1
8	P22	6.2	0.0	0.0	-0.2
8	P23	6.3	0.5	0.2	0.1
8	P24	6.7	-0.4	-0.5	-0.5

DATA Continued**LLCR thermal aging**

	mOhm values	Actual	Delta
Board	Position	Initial	Thermal age
1	P1	6.0	0.1
1	P2	6.4	-0.1
1	P3	6.1	-0.1
1	P4	5.9	0.0
1	P5	6.0	0.0
1	P6	5.9	0.0
1	P7	5.6	0.1
1	P8	6.3	0.0
1	P9	6.7	0.2
1	P10	6.5	-0.1
1	P11	6.5	-0.1
1	P12	6.6	0.0
1	P13	6.9	0.0
1	P14	6.4	-0.1
1	P15	6.9	0.0
1	P16	6.8	0.0
1	P17	5.9	-0.1
1	P18	6.1	0.0
1	P19	5.7	0.0
1	P20	6.0	0.4
1	P21	6.1	0.2
1	P22	6.0	0.0
1	P23	5.8	0.0
1	P24	6.0	0.0
2	P1	7.4	-0.2
2	P2	7.2	0.0
2	P3	6.6	-0.1
2	P4	8.0	-0.3
2	P5	6.4	-0.1
2	P6	6.6	0.1
2	P7	6.8	-0.1
2	P8	7.8	-0.2
2	P9	6.9	-0.2
2	P10	7.1	-0.1
2	P11	6.7	-0.1
2	P12	7.2	-0.2
2	P13	6.2	-0.1
2	P14	6.1	-0.1
2	P15	7.1	0.0
2	P16	7.1	-0.1
2	P17	6.2	-0.1
2	P18	5.8	-0.1
2	P19	5.8	0.0
2	P20	5.8	0.1
2	P21	5.8	0.0

2	P22	5.8	0.0
2	P23	6.0	0.1
2	P24	6.5	-0.2
3	P1	6.6	-0.1
3	P2	6.3	-0.1
3	P3	6.4	-0.1
3	P4	6.4	-0.1
3	P5	6.6	-0.1
3	P6	6.4	0.1
3	P7	6.4	0.1
3	P8	7.5	-0.3
3	P9	7.5	0.0
3	P10	6.8	-0.2
3	P11	7.8	-0.1
3	P12	7.1	0.0
3	P13	7.2	0.0
3	P14	7.1	-0.2
3	P15	8.0	-0.1
3	P16	7.1	0.0
3	P17	6.0	-0.1
3	P18	6.3	0.0
3	P19	6.0	0.1
3	P20	6.0	0.2
3	P21	6.1	0.1
3	P22	6.1	0.0
3	P23	6.2	-0.1
3	P24	6.5	0.0
4	P1	6.0	0.1
4	P2	7.1	0.0
4	P3	6.2	-0.1
4	P4	7.2	0.0
4	P5	6.5	0.0
4	P6	6.9	-0.1
4	P7	6.9	0.1
4	P8	7.3	-0.1
4	P9	7.3	0.1
4	P10	6.6	-0.1
4	P11	7.0	-0.3
4	P12	7.2	-0.1
4	P13	7.1	-0.8
4	P14	6.4	-0.1
4	P15	6.6	-0.1
4	P16	6.5	0.0
4	P17	6.2	-0.1
4	P18	7.0	0.1
4	P19	6.8	0.0
4	P20	6.3	0.2
4	P21	6.4	0.0
4	P22	6.4	-0.1
4	P23	6.0	0.0

4	P24	6.4	-0.1
5	P1	7.4	-0.1
5	P2	7.7	0.0
5	P3	7.5	-0.1
5	P4	7.4	-0.1
5	P5	6.5	-0.1
5	P6	6.5	0.1
5	P7	6.5	0.0
5	P8	6.8	-0.1
5	P9	5.9	0.0
5	P10	6.7	-0.2
5	P11	7.9	-0.2
5	P12	6.6	0.0
5	P13	7.1	0.0
5	P14	6.8	-0.1
5	P15	6.4	-0.1
5	P16	7.4	-0.2
5	P17	6.5	0.0
5	P18	7.3	-0.1
5	P19	6.9	-0.1
5	P20	6.1	0.1
5	P21	7.3	0.0
5	P22	6.8	-0.1
5	P23	6.4	0.0
5	P24	6.8	0.0
6	P1	6.1	0.0
6	P2	6.6	-0.2
6	P3	6.0	-0.1
6	P4	7.0	-0.1
6	P5	6.5	-0.1
6	P6	7.3	0.0
6	P7	6.0	0.1
6	P8	6.9	-0.2
6	P9	6.2	0.0
6	P10	7.3	-0.4
6	P11	6.1	0.0
6	P12	6.0	0.0
6	P13	6.7	0.0
6	P14	6.1	-0.2
6	P15	8.3	0.1
6	P16	8.6	-1.3
6	P17	5.7	0.0
6	P18	6.3	-0.1
6	P19	6.3	0.0
6	P20	5.4	0.1
6	P21	5.5	0.1
6	P22	6.0	-0.3
6	P23	6.4	0.0
6	P24	6.0	-0.1
7	P1	6.3	-0.1

7	P2	7.5	-0.4
7	P3	6.5	-0.1
7	P4	6.9	-0.1
7	P5	5.9	0.0
7	P6	7.2	-0.1
7	P7	6.7	0.3
7	P8	6.1	0.2
7	P9	6.2	0.1
7	P10	6.5	0.0
7	P11	6.3	0.0
7	P12	6.3	0.0
7	P13	6.7	0.0
7	P14	6.7	-0.1
7	P15	6.9	-0.2
7	P16	6.6	-0.1
7	P17	6.6	-0.1
7	P18	6.0	-0.2
7	P19	6.3	0.1
7	P20	6.0	0.0
7	P21	6.1	0.0
7	P22	6.1	-0.1
7	P23	6.5	-0.1
7	P24	6.5	-0.1
8	P1	6.0	-0.1
8	P2	6.2	-0.2
8	P3	5.9	-0.1
8	P4	6.1	-0.1
8	P5	5.7	-0.1
8	P6	5.8	-0.1
8	P7	6.2	0.0
8	P8	5.7	-0.2
8	P9	6.1	0.0
8	P10	6.2	-0.5
8	P11	5.8	-0.2
8	P12	5.8	-0.1
8	P13	7.2	0.0
8	P14	7.1	-0.2
8	P15	7.1	0.0
8	P16	7.3	0.0
8	P17	6.4	0.0
8	P18	7.1	0.0
8	P19	6.4	0.2
8	P20	5.9	0.4
8	P21	5.8	0.1
8	P22	6.7	0.3
8	P23	6.0	0.0
8	P24	6.1	-0.1

DATA Continued**LLCR Gas Tight**

	mOhm values	Actual	Delta
Board	Position	Initial	Gas Tight
1	P1	7.4	0.2
1	P2	8.1	0.0
1	P3	8.0	0.1
1	P4	10.1	0.2
1	P5	7.5	0.1
1	P6	8.1	0.2
1	P7	7.8	0.1
1	P8	7.9	0.0
1	P9	7.5	0.3
1	P10	7.7	0.0
1	P11	7.6	0.0
1	P12	7.7	0.0
1	P13	7.3	0.0
1	P14	7.1	0.0
1	P15	7.0	0.1
1	P16	6.3	0.1
1	P17	6.6	0.0
1	P18	6.4	0.1
1	P19	5.9	0.0
1	P20	6.8	-0.2
1	P21	6.2	0.0
1	P22	7.6	0.1
1	P23	6.6	0.2
1	P24	6.5	0.1
2	P1	7.3	0.0
2	P2	7.3	0.0
2	P3	7.1	0.0
2	P4	6.6	0.0
2	P5	6.6	0.0
2	P6	7.6	-0.2
2	P7	8.1	0.0
2	P8	6.4	0.0
2	P9	6.5	0.0
2	P10	7.1	0.0
2	P11	8.3	0.0
2	P12	7.2	0.0
2	P13	6.8	0.1
2	P14	6.9	0.0
2	P15	7.1	-0.1
2	P16	7.6	-0.3
2	P17	7.1	0.0
2	P18	6.8	-0.3
2	P19	7.1	0.0
2	P20	5.8	0.0
2	P21	6.0	0.1

2	P22	6.5	0.0
2	P23	6.7	0.1
2	P24	6.8	0.0
3	P1	6.4	0.0
3	P2	6.4	-0.1
3	P3	6.4	-0.1
3	P4	6.2	0.0
3	P5	5.7	0.0
3	P6	5.7	0.0
3	P7	5.9	-0.1
3	P8	6.6	0.0
3	P9	6.7	0.0
3	P10	5.8	0.0
3	P11	6.4	0.0
3	P12	6.6	0.0
3	P13	7.0	0.0
3	P14	6.6	0.0
3	P15	6.9	0.0
3	P16	6.9	0.0
3	P17	6.7	0.0
3	P18	5.6	0.0
3	P19	6.3	0.0
3	P20	5.6	0.0
3	P21	5.9	0.0
3	P22	5.9	0.0
3	P23	6.4	0.0
3	P24	6.8	0.0
4	P1	6.1	0.0
4	P2	7.3	0.0
4	P3	6.2	0.0
4	P4	7.0	0.0
4	P5	6.3	0.0
4	P6	6.4	0.0
4	P7	6.3	0.3
4	P8	6.2	0.0
4	P9	6.3	0.0
4	P10	6.2	0.0
4	P11	6.2	0.0
4	P12	6.5	0.0
4	P13	6.3	0.0
4	P14	5.7	0.0
4	P15	6.7	0.0
4	P16	5.8	0.0
4	P17	6.4	0.0
4	P18	6.2	0.0
4	P19	5.9	0.0
4	P20	5.5	0.1
4	P21	5.8	0.0
4	P22	6.5	0.0
4	P23	6.6	0.0

4	P24	5.9	0.0
5	P1	5.9	0.1
5	P2	6.3	0.0
5	P3	6.2	0.1
5	P4	6.6	0.0
5	P5	5.4	0.0
5	P6	6.3	0.0
5	P7	6.2	0.0
5	P8	6.1	0.0
5	P9	6.3	0.0
5	P10	7.0	0.0
5	P11	6.8	0.0
5	P12	6.1	0.0
5	P13	6.6	0.0
5	P14	6.0	0.0
5	P15	6.5	0.0
5	P16	6.1	0.0
5	P17	5.7	0.0
5	P18	5.6	0.0
5	P19	5.9	0.0
5	P20	5.2	0.1
5	P21	5.7	0.0
5	P22	6.0	0.0
5	P23	6.0	0.0
5	P24	6.1	0.0
6	P1	5.8	0.0
6	P2	6.1	0.0
6	P3	5.6	0.0
6	P4	5.4	0.0
6	P5	5.2	0.0
6	P6	5.5	0.0
6	P7	5.6	0.1
6	P8	6.3	-0.5
6	P9	5.3	0.0
6	P10	6.1	0.0
6	P11	5.8	0.0
6	P12	6.8	0.0
6	P13	5.9	0.0
6	P14	5.7	0.0
6	P15	6.2	0.0
6	P16	7.0	-0.2
6	P17	5.7	0.0
6	P18	5.9	0.1
6	P19	5.7	0.0
6	P20	5.7	0.0
6	P21	5.5	0.1
6	P22	6.3	0.0
6	P23	6.3	0.0
6	P24	6.0	0.0
7	P1	6.8	-0.1

7	P2	6.9	0.1
7	P3	5.5	0.1
7	P4	7.9	0.1
7	P5	5.4	0.1
7	P6	5.9	0.1
7	P7	6.3	0.2
7	P8	5.4	0.0
7	P9	6.1	-0.4
7	P10	5.8	-0.1
7	P11	5.9	-0.2
7	P12	6.3	-0.1
7	P13	6.8	0.1
7	P14	6.4	0.0
7	P15	6.2	0.0
7	P16	6.2	-0.1
7	P17	5.7	0.1
7	P18	5.4	0.2
7	P19	6.4	0.0
7	P20	5.2	0.0
7	P21	5.8	0.0
7	P22	6.0	0.0
7	P23	6.3	0.0
7	P24	5.6	-0.1
8	P1	7.2	0.0
8	P2	6.4	0.0
8	P3	6.5	0.0
8	P4	7.1	-0.1
8	P5	7.0	0.0
8	P6	7.7	0.0
8	P7	7.1	0.0
8	P8	7.1	0.0
8	P9	6.1	0.1
8	P10	7.5	0.0
8	P11	6.8	0.0
8	P12	6.8	0.0
8	P13	7.6	-0.1
8	P14	8.1	-0.1
8	P15	7.3	0.0
8	P16	7.4	0.2
8	P17	5.7	0.0
8	P18	6.1	0.1
8	P19	6.5	0.0
8	P20	6.0	0.1
8	P21	6.0	0.1
8	P22	5.9	0.0
8	P23	5.9	-0.1
8	P24	5.8	0.0

Data Continued**LLCR S&V:**

	mOhm values	Actual	Delta
Board	Position	Initial	Shock / Vibe
1	P1	6.9	0.2
1	P2	6.3	0.2
1	P3	5.9	0.0
1	P4	6.6	-0.3
1	P5	7.4	-0.2
1	P6	7.1	-1.8
1	P7	7.3	-0.2
1	P8	8.3	-0.3
1	P9	6.9	-0.1
1	P10	8.8	-0.9
1	P11	7.4	0.0
1	P12	7.5	0.0
1	P13	8.1	-0.4
1	P14	8.3	-0.4
1	P15	8.4	-0.2
1	P16	8.3	-0.3
1	P17	7.4	-0.1
1	P18	7.5	0.0
1	P19	7.2	0.1
1	P20	6.5	-0.3
1	P21	6.5	-0.1
1	P22	8.1	0.0
1	P23	7.0	-0.1
1	P24	7.1	0.1
2	P1	8.2	-0.3
2	P2	7.2	-0.4
2	P3	6.8	-0.2
2	P4	6.7	-0.6
2	P5	6.3	0.0
2	P6	5.6	-0.1
2	P7	5.6	0.1
2	P8	6.8	-0.1
2	P9	6.5	0.0
2	P10	7.2	0.0
2	P11	7.6	-0.2
2	P12	7.8	0.0
2	P13	8.7	-0.2
2	P14	7.4	0.1
2	P15	8.4	-0.4
2	P16	8.4	-0.4
2	P17	7.4	0.0
2	P18	6.8	0.3
2	P19	6.5	0.3
2	P20	7.6	0.0
2	P21	7.0	-0.1
2	P22	6.9	-0.1

2	P23	6.9	-0.1
2	P24	7.8	-0.2
3	P1	8.1	-0.2
3	P2	7.5	-0.1
3	P3	7.7	-0.2
3	P4	6.9	0.0
3	P5	6.8	0.1
3	P6	6.9	-0.1
3	P7	7.6	-0.1
3	P8	7.6	-0.4
3	P9	6.7	0.0
3	P10	6.9	-0.1
3	P11	7.8	-0.1
3	P12	7.0	-0.2
3	P13	6.9	-0.2
3	P14	7.2	0.3
3	P15	6.9	0.1
3	P16	7.0	0.1
3	P17	6.8	0.0
3	P18	6.9	0.4
3	P19	6.2	0.2
3	P20	5.8	0.1
3	P21	6.7	0.0
3	P22	7.1	0.2
3	P23	6.3	0.1
3	P24	6.5	-0.1
4	P1	6.8	0.3
4	P2	7.0	0.2
4	P3	8.0	0.0
4	P4	7.4	-0.1
4	P5	6.9	-0.1
4	P6	6.5	-0.1
4	P7	6.8	0.2
4	P8	8.1	0.1
4	P9	6.6	0.1
4	P10	7.4	0.1
4	P11	8.0	-0.2
4	P12	7.4	0.0
4	P13	7.3	0.4
4	P14	8.1	0.4
4	P15	7.8	-0.4
4	P16	7.9	-0.3
4	P17	7.0	0.1
4	P18	7.5	0.2
4	P19	8.2	-0.3
4	P20	6.8	-0.3
4	P21	7.0	-0.3
4	P22	8.2	-0.1
4	P23	7.2	-0.3
4	P24	6.9	0.1

5	P1	6.9	0.0
5	P2	6.9	-0.1
5	P3	8.0	0.0
5	P4	6.4	0.1
5	P5	6.5	0.2
5	P6	6.8	0.9
5	P7	8.8	-1.1
5	P8	7.2	-0.4
5	P9	9.8	-2.1
5	P10	7.9	-0.2
5	P11	7.0	-0.1
5	P12	6.8	-0.2
5	P13	7.3	-0.5
5	P14	7.3	-0.1
5	P15	7.1	-0.3
5	P16	7.0	-0.1
5	P17	6.4	0.0
5	P18	7.3	-0.8
5	P19	6.7	0.1
5	P20	6.4	-0.3
5	P21	6.3	0.0
5	P22	6.3	0.1
5	P23	6.7	-0.2
5	P24	6.5	0.4
6	P1	6.7	0.0
6	P2	7.0	-0.5
6	P3	6.2	-0.1
6	P4	6.6	-0.2
6	P5	6.2	-0.1
6	P6	6.6	0.0
6	P7	7.0	1.2
6	P8	7.3	-0.1
6	P9	6.8	-0.2
6	P10	7.4	-0.4
6	P11	6.8	-0.2
6	P12	6.6	-0.3
6	P13	6.9	-0.3
6	P14	6.5	-0.3
6	P15	6.9	-0.4
6	P16	6.8	-0.2
6	P17	6.6	-0.3
6	P18	6.7	-0.3
6	P19	6.3	-0.1
6	P20	6.5	-0.2
6	P21	6.6	-0.2
6	P22	7.0	-0.3
6	P23	6.4	-0.3
6	P24	6.8	-0.2
7	P1	8.7	0.2
7	P2	8.6	-0.9

7	P3	8.2	-0.2
7	P4	8.1	-0.3
7	P5	7.6	0.0
7	P6	8.8	-0.5
7	P7	6.5	0.0
7	P8	7.8	-0.1
7	P9	7.0	0.0
7	P10	7.8	0.2
7	P11	8.8	-0.3
7	P12	8.1	-0.2
7	P13	8.2	-0.4
7	P14	8.4	0.0
7	P15	8.3	-0.7
7	P16	9.4	-1.0
7	P17	8.8	0.0
7	P18	7.4	-0.4
7	P19	7.8	0.0
7	P20	7.4	0.3
7	P21	8.5	-1.1
7	P22	6.8	0.9
7	P23	8.5	0.1
7	P24	9.1	0.5
8	P1	7.6	0.1
8	P2	7.6	-0.3
8	P3	8.2	-0.1
8	P4	7.3	0.6
8	P5	7.9	0.0
8	P6	7.4	-0.3
8	P7	6.7	-0.1
8	P8	7.5	0.1
8	P9	7.6	-0.1
8	P10	8.0	0.1
8	P11	9.1	0.7
8	P12	7.5	0.0
8	P13	7.5	0.2
8	P14	7.8	-0.1
8	P15	7.7	-0.1
8	P16	6.8	0.0
8	P17	7.7	0.1
8	P18	6.7	0.1
8	P19	7.4	-0.1
8	P20	6.7	0.8
8	P21	6.7	-0.3
8	P22	7.0	0.0
8	P23	7.0	-0.1
8	P24	8.0	-0.3

EQUIPMENT AND CALIBRATION SCHEDULES**Equipment #:** MO-03**Description:** Micro-ohmmeter**Manufacturer:** Keithley**Model:** 580**Serial #:** 297288**Accuracy:** Last Cal: 2011-8-06, Next Cal: 2012-8-05**Equipment #:** TCT-01**Description:** Normal force analyzer**Manufacturer:** Mecmesin Multitester**Model:** Mecmesin Multitester 2.5-i**Serial #:** 08-1049-04**Accuracy:** Last Cal: 2011-4-28, Next Cal: 2012-4-27**Equipment #:** OV-01**Description:** Oven**Manufacturer:** Huida**Model:** CS101-1E**Serial #:** CS101-1E-B**Accuracy:** Last Cal: 2010-12-14, Next Cal: 2011-12-13**Equipment #:** THC-01**Description:** Humidity transmitter**Manufacturer:** Thermtron**Model:** HMM30C**Serial #:** D0240037**Accuracy:** Last Cal: 2011-3-3, Next Cal: 2012-3-2**Equipment #:** OGP-01**Description:** Video measurement system**Manufacturer:** OGP**Model:** SMARTSCOPE FLASH 200**Serial #:** SVW2003632**Accuracy:** Last Cal: 2011-6-10, Next Cal: 2012-6-9**Equipment #:** MO-01**Description:** Micro-ohmmeter**Manufacturer:** Keithley**Model:** 2700**Serial #:** 1199807**Accuracy:** Last Cal: 2011-4-28, Next Cal: 2012-4-27

EQUIPMENT AND CALIBRATION SCHEDULES**Equipment #:** PS-01**Description:** Power Supply**Manufacturer:** Agilent**Model:** 6031A**Serial #:** MY41000982**Accuracy:** Last Cal: 2011-4-28, Next Cal: 2012-4-27**Equipment #:** TSC-01**Description:** Thermal Shock transmitter**Manufacturer:** Keithley**Model:** 10-VT14994**Serial #:** VTS-3-6-6-SC/AC**Accuracy:** Last Cal: 2011-11-1, Next Cal: 2012-11-1**Equipment #:** ACLM-01**Description:** Accelerometer**Manufacturer:** PCB Piezotronics**Model:** 352C03**Serial #:** 115819**Accuracy:** See Manual

... Last Cal: 2011-07-9, Next Cal: 2012-7-9

Equipment #: ED-03**Description:** Event Detector**Manufacturer:** Analysis Tech**Model:** 32EHD**Serial #:** 1100604**Accuracy:** See Manual

... Last Cal: 2011-06-4, Next Cal: 2012-06-4