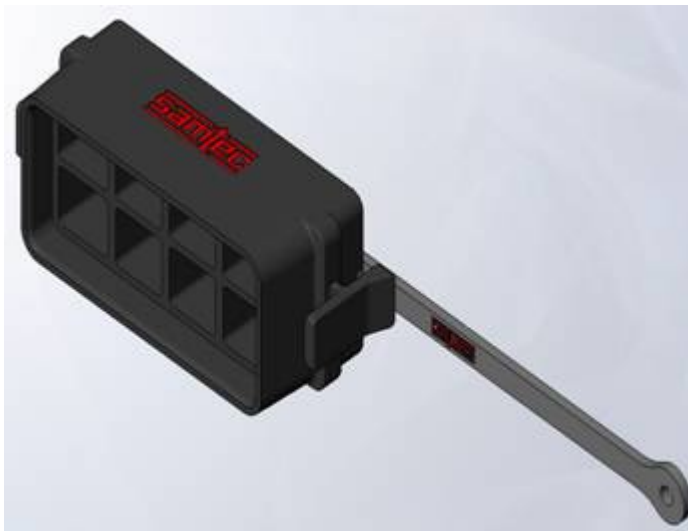
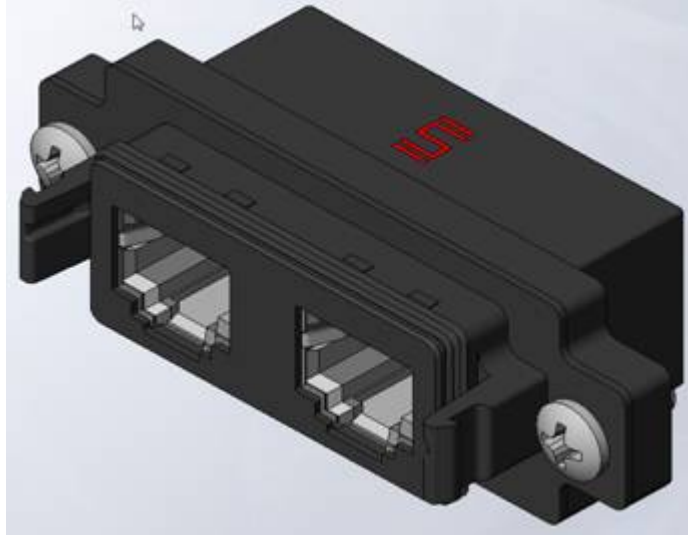




Project Number: Design Qualification Test Report		Tracking Code: 163580_Report_Rev_1	
Requested by: Travis Newton		Date: 6/8/2012	Product Rev: N/A
Part #: RPBE-02-01-E\DCA-RPBE-02-01		Lot #: N/A	Tech: Peter Chen Aaron McKim
Part description: RPBE\DCA			Eng: Eric Mings Vico Zhao
Test Start: 05/28/2012			Qty to test: 20
Test Completed: 05/28/2012			



Design Qualification Test Report

PART DESCRIPTION

RPBE-02-01-E\DCA-RPBE-02-01

CERTIFICATION

All instruments and measuring equipment were calibrated to National Institute for Standards and Technology (NIST) traceable standards according to ISO 10012-1 and ANSI/NCSL 2540-1, as applicable.

All contents contained herein are the property of Samtec. No portion of this report, in part or in full shall be reproduced without prior written approval of Samtec.

SCOPE

To perform the following tests: Design qualification test. See test plan.

APPLICABLE DOCUMENTS

Standards: EIA Publication 364

TEST SAMPLES AND PREPARATION

- 1) All materials were manufactured in accordance with the applicable product specification.
- 2) All test samples were identified and encoded to maintain traceability throughout the test sequences.
- 3) Either an automated cleaning procedure or an ultrasonic cleaning procedure may be used.
- 4) Any additional preparation will be noted in the individual test sequences.

FLOWCHARTS

IP67 Dust & Water

TEST STEP	GROUP A1 6 Mated Connectors	GROUP A2 6 Mated Connectors	GROUP D1 6 Connectors RPBE-02-01-E ONLY	GROUP D2 6 Connectors RPBE-02-01-E ONLY
01	Dust Test	Submersion Water Test	Dust Test	Submersion Water Test
02	Check for Dust	Check for Water	Check for Dust	Check for Water

Dust/Water Testing = Per CEI/IEC 60529 Code IP67

ATTRIBUTE DEFINITIONS

The following is a brief, simplified description of attributes.

WATER TESTING:

- 1) Reference document: CEI/IEC 60529 Code IP67
- 2) SCRES torque specification for SPN-17-01 is 45 IN-OZ+|-10
- 3) SCPE torque specification for SCN-17-01 is 45 IN-OZ+|-10

DUST TESTING:

- 1) Reference document: CEI/IEC 60529 Code IP67
- 2) SCRES torque specification for SPN-17-01 is 45 IN-OZ+|-10
- 3) SCPE torque specification for SCN-17-01 is 45 IN-OZ+|-10

RESULTS**IP67 Testing (Water & Dust)****Group A1**

Dust	<u>Initial (Before Exposure)</u> No Dust Present	<u>After Exposure</u> No Dust Present
-------------	--	---

Group A2

Water	<u>Initial (Before Exposure)</u> No Water Present	<u>After Exposure</u> No Water Present
--------------	---	--

Group D1

Dust	<u>Initial (Before Exposure)</u> No Dust Present	<u>After Exposure</u> No Dust Present
-------------	--	---

Group D2

Water	<u>Initial (Before Exposure)</u> No Water Present	<u>After Exposure</u> No Water Present
--------------	---	--

DATA SUMMARIES**IP67 Testing (Water & Dust)****Group A1**

Sample #	Visual Inspection
1	Pass
2	Pass
3	Pass
4	Pass
5	Pass
6	Pass

Group A2

Sample #	Visual Inspection
1	Pass
2	Pass
3	Pass
4	Pass
5	Pass
6	Pass

Group D1

Sample #	Visual Inspection
1	Pass
2	Pass
3	Pass
4	Pass
5	Pass
6	Pass

Group D2

Sample #	Visual Inspection
1	Pass
2	Pass
3	Pass
4	Pass
5	Pass
6	Pass

EQUIPMENT AND CALIBRATION SCHEDULES**Equipment #:** WATER-01**Description:** IP-67 1.0 Meter Water Column Chamber**Manufacturer:** Samtec Machine**Model:** N/A**Serial #:** N/A**Accuracy:** No Calibration Required**Equipment #:** HZ-DUST-01**Description:** IP-X6 Dust Tester**Manufacturer:** Samtec Machine**Model:** N/A**Serial #:** N/A**Accuracy:** No Calibration Required