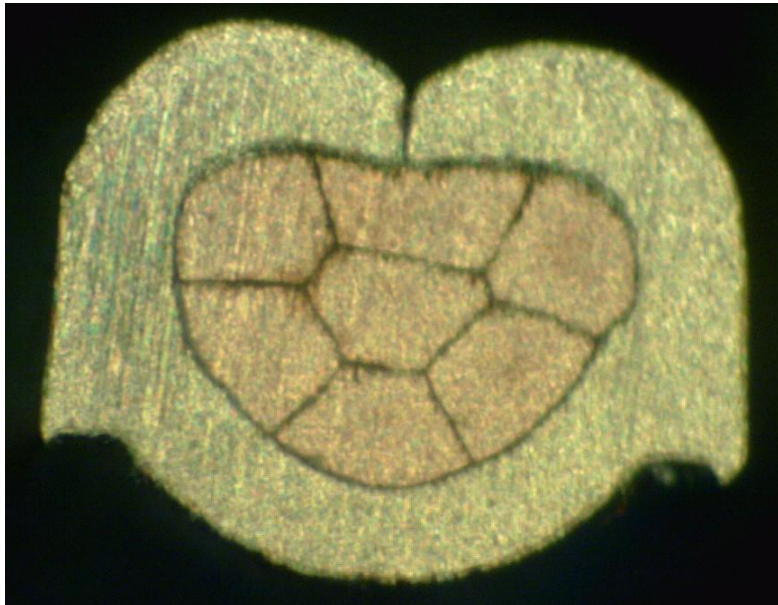




Project Number: Crimp Characterization Testing		Tracking Code: 213167	
Requested by: Bryon Saylor		Date: 8/15/2012	Product Rev:
Part #: C-281-2426-CRIMP-24-DWC		Lot #:	Tech: Aaron McKim Eng: Eric Mings
Part description: Individual Crimp Contacts with Wire Attached			Qty to test:
Test Start: 8/13/2012	Test Completed: 8/15/2012		

## **CRIMP HEIGHT CHARACTERIZATION SUMMARY REPORT**



**C-281-2426-CRIMP-24-DWC**  
**Used In: S2SD**

Tracking Code: 213167	Part #: C-281-2426-CRIMP-24-DWC
Part description: Individual Crimp Contacts with Wire Attached	

**REVISION HISTORY**

DATE	REV. NUM.	DESCRIPTION	ENG
8/15/2012	1	Initial Issue	AM

## CERTIFICATION

All instruments and measuring equipment were calibrated to National Institute for Standards and Technology (NIST) traceable standards according to ISO 10012-1 and ANSI/NCSL 2540-1, as applicable.

All contents contained herein are the property of Samtec. No portion of this report, in part or in full shall be reproduced without prior written approval of Samtec.

### SCOPE

To characterize initial mechanical and electrical crimp performance vs. crimp height.

### APPLICABLE DOCUMENTS

Standards: EIA Publication 364  
USCAR2-5  
USCAR FCLT

### TEST SAMPLES AND PREPARATION

- 1) All materials were manufactured in accordance with the applicable product specification.
- 2) All test samples were identified and encoded to maintain traceability throughout the test sequences.
- 3) Test samples were not cleaned prior to testing.
- 4) Any additional preparation will be noted in the individual test sequences.
- 5) Two hundred and twenty (220) contacts with wires crimped were submitted for this evaluation. (see flow chart for sample distribution)

## FLOWCHARTS

### Wire Crimp Height Verification - LLCR / Pull Test

TEST STEP	GROUPS A1 - A11 10 Crimps
01	Visual Inspection
02	Measure crimp height via crimp micrometers
03	LLCR
04	Pull-out force

#### Crimp Manufacturing Instructions:

Cable length to be 6" minimum

Insulation crimp to not constrain jacket

Pull-out Force: EIA-364-38C

LLCR: EIA-364-23

20 mV Max, 100 mA Max

Use Keithley 580 or 3706 in 4 wire dry circuit mode

### Wire Crimp Height Verification - Cross Section

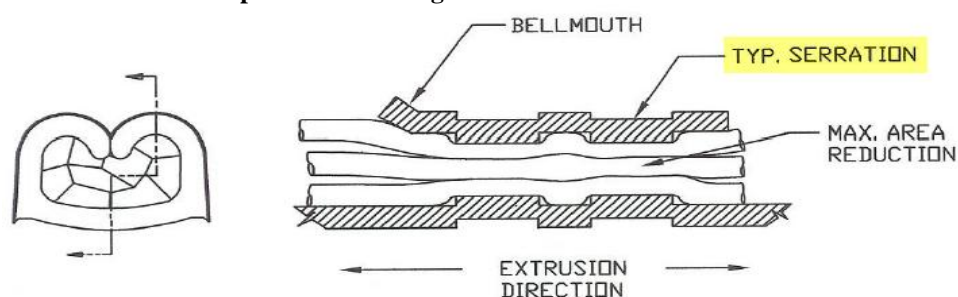
TEST STEP	GROUPS A1 - A11 3 Crimps
01	Visual Inspection
02	Measure crimp height via crimp micrometers
03	** Cross Section
04	Photos of Crimps
05	Count / Verify # of Strands
06	*** Examine for compliance with Pass/Fail criteria

#### Crimp Manufacturing Instructions:

Cable length to be 6" minimum

Insulation crimp to not constrain jacket

\* Cross section to be performed through the serration area shown below



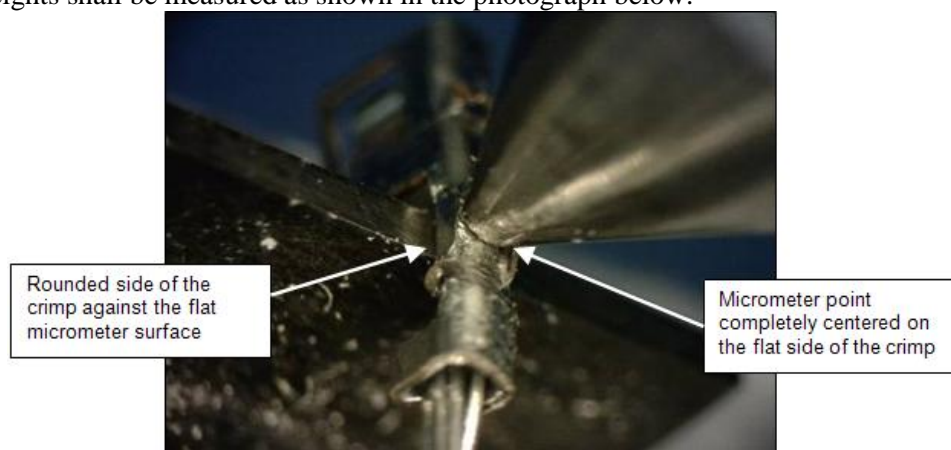
\*\* Examine for compliance with PASS/FAIL criteria: No broken/missed wires, voids, cracks in the contact material or other applicable defects shall be allowed.

## ATTRIBUTE DEFINITIONS

The following is a brief, simplified description of attributes.

### CRIMP HEIGHT:

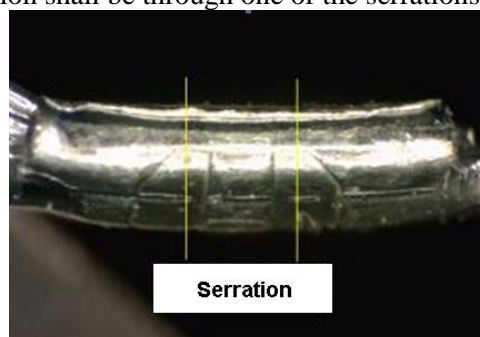
- 1) Crimp heights shall be measured as shown in the photograph below:



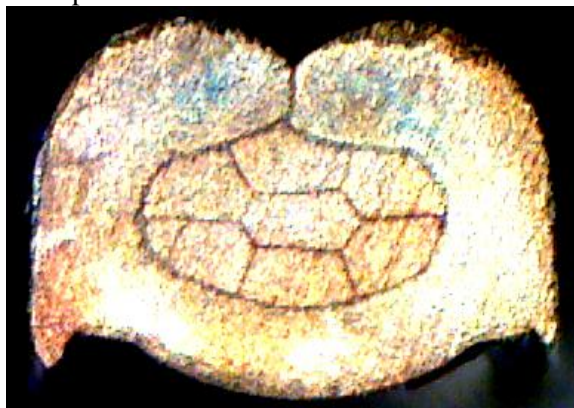
- 2) The crimp heights shall be measured on samples that have not been cross-sectioned. The above photograph was used to provide a clear view of the measurement point without the rest of the sample impeding the view.

### CROSS-SECTION:

- 1) Contacts shall be cross-sectioned and polished without being potted.
- 2) The location of the cross-section shall be through one of the serrations designated in the below photograph.

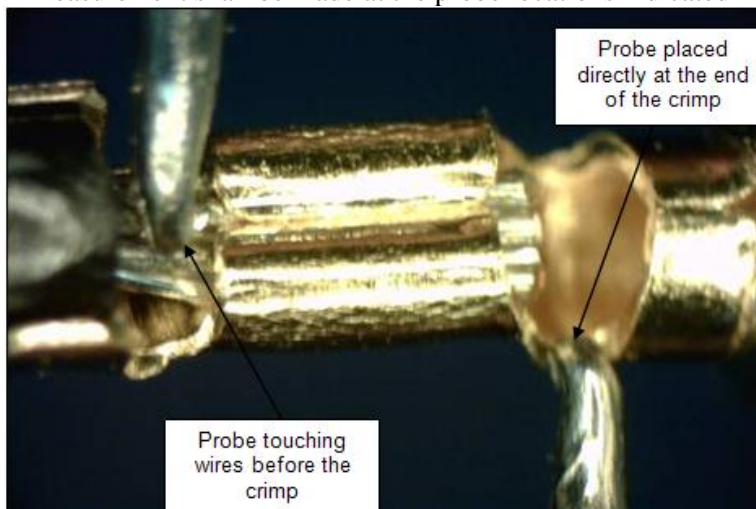


- 3) Polished crimp contact cross-sections shall be etched in a mild etchant to provide contrast for the microscopic examination.
- 4) Etched samples shall be examined under 40X magnification.
- 5) The final cross-section shall be presented as follows:



**LOW LEVEL CONTACT RESISTANCE (LLCR):**

- 1) The LLCR shall be measured and recorded in accordance with EIA-364-23A, *Low Level Contact Resistance Test Procedure for Electrical Connectors and Sockets*.
- 2) A four wire, Kelvin measurement shall be made at the probe locations indicated in the below photograph:



- 3) Test Conditions:
  - a. Maximum Open Circuit Voltage: 20 mV
  - b. Maximum Test Current: 100 mA

**CRIMP PULL FORCE:**

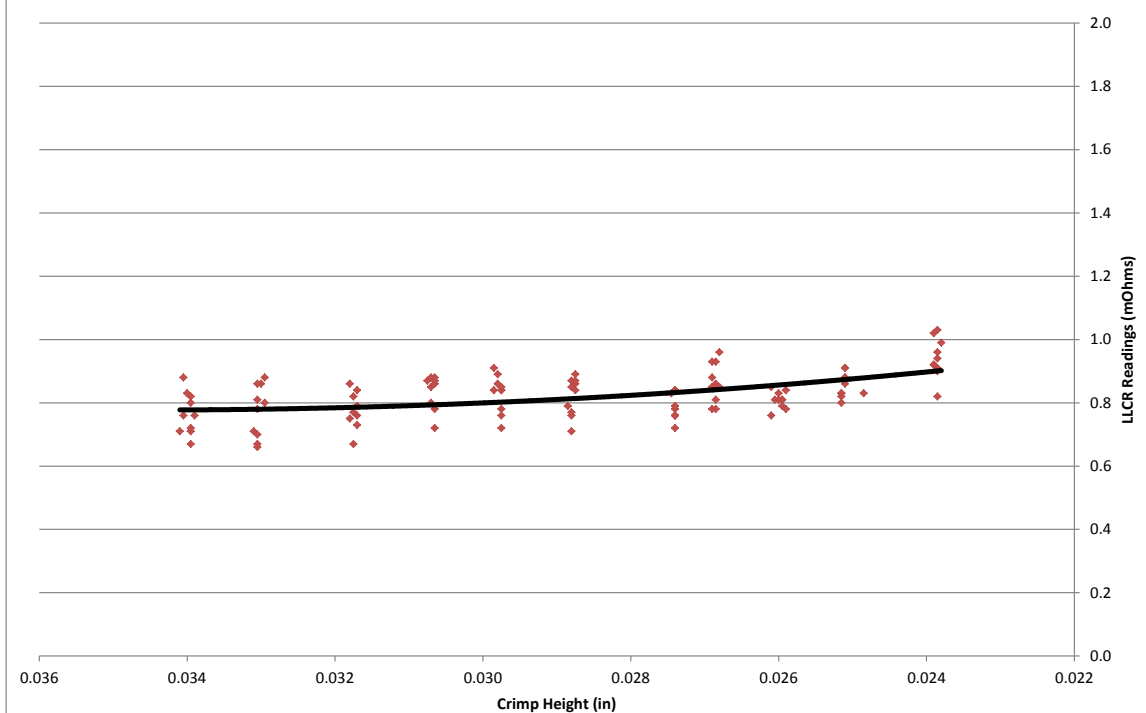
- 1) The test was performed in accordance with EIA-364-08B.
- 2) Secure contact near center and pull wire at 0°, in-line with contact.
- 3) The test stand speed shall be 25 ±6 mm.

EIA-364-08B defines the types of separation resulting from this test as follows:

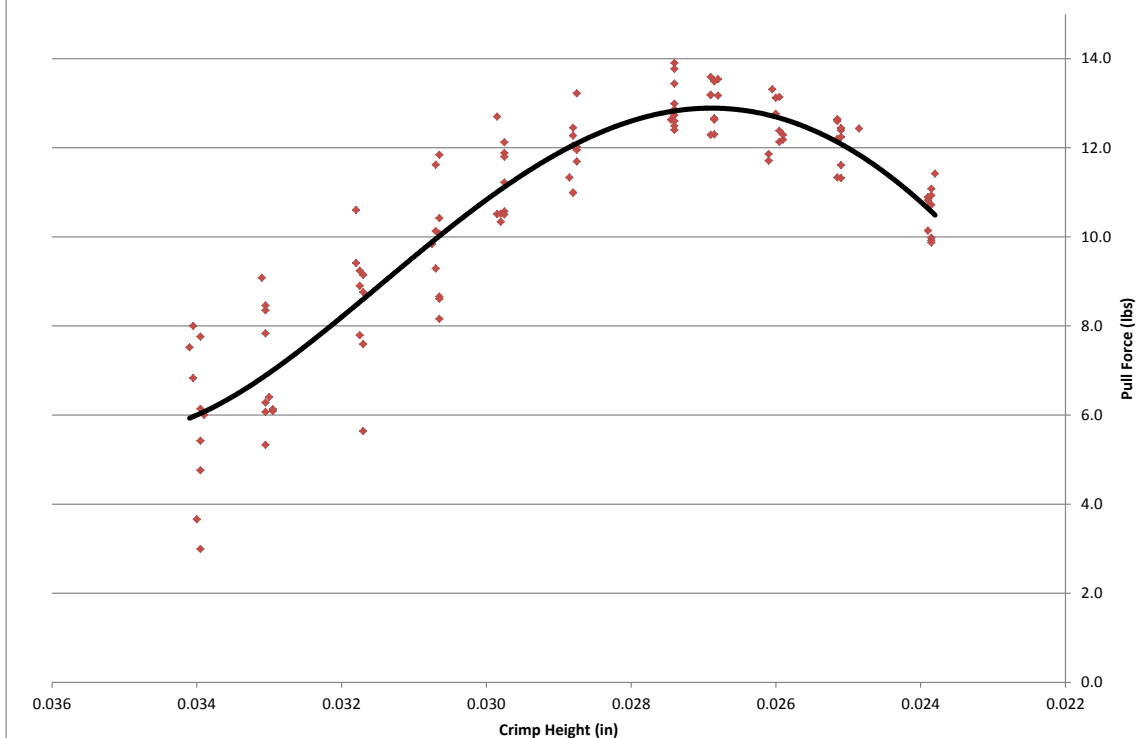
- 1) Slip (pull out).
- 2) Conductor broken in crimp area (some or all).
- 3) Contact broke in crimp area (some or all).
- 4) Conductor broken outside crimp area.
- 5) Contact broken outside crimp area.

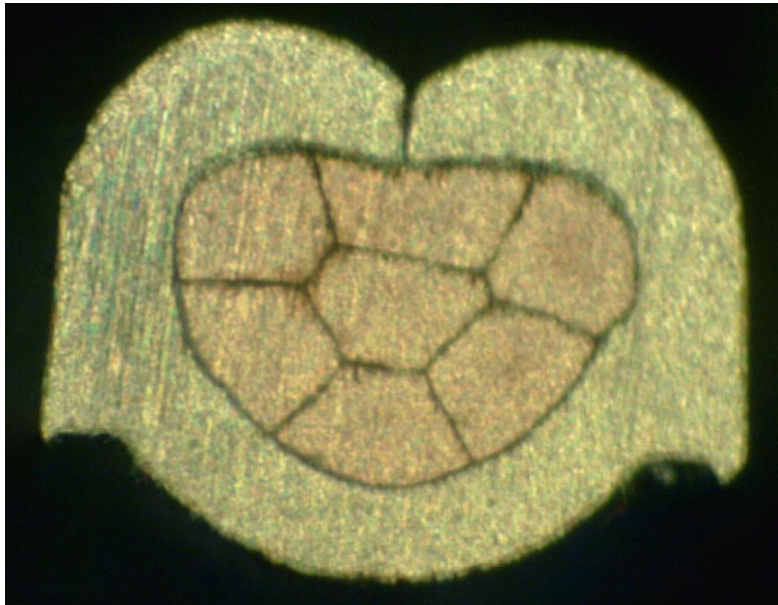
## TEST RESULTS

### Crimp LLCR Readings



### Pull Force Readings



**CROSS-SECTION PHOTO:**

Typical sample at nominal height



**EQUIPMENT AND CALIBRATION SCHEDULES****Equipment #:** MC-41**Description:** Crimp Micrometer**Manufacturer:** Mitutoyo**Model:** 342-371**Serial #:** 05020827**Accuracy:** See Manual

... Last Cal: 06/09/2012, Next Cal: 06/09/2013

**Equipment #:** MO-01**Description:** Micro-Ohmmeter**Manufacturer:** Keithley**Model:** 580**Serial #:** 0772740**Accuracy:** See Manual

... Last Cal: 03/27/2012, Next Cal: 03/27/2013

**Equipment #:** TCT-04**Description:** Dillon Quantrol TC21 25-1000 mm/min series test stand**Manufacturer:** Dillon Quantrol**Model:** TC2 I series test stand**Serial #:** 04-1041-04**Accuracy:** Speed Accuracy: +/- 5% of indicated speed

... Last Cal: 05/03/2012, Next Cal: 05/03/2013

**Equipment #:** LC-250N-2**Description:** 250 Newton Load Cell**Manufacturer:** Mecmesin**Model:** ILC – Load Cell**Serial #:** 07-0029-02**Accuracy:** See Manual

... Last Cal: 7/10/2012, Next Cal: 1/1/2013