

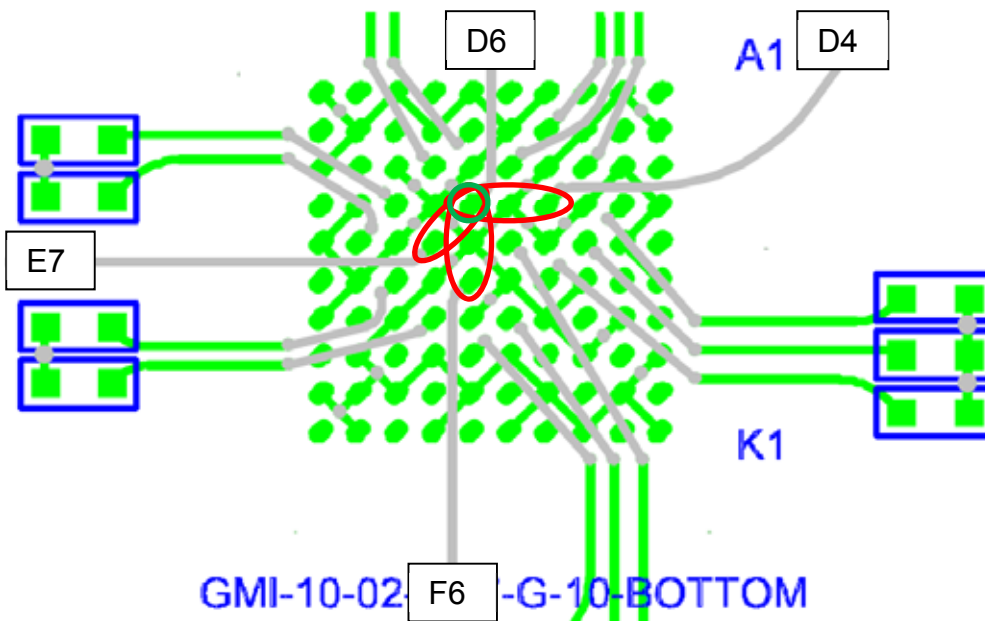
Series: GMI

Description: Low Profile One Piece Array, 1.0mm x 1.0mm Grid, 1.27mm Stack Height

## Frequency Domain Data Summary

Table 1 - Single-Ended 1:1 S/G Pattern Performance			
Test Parameter	Driver	Receiver	
Insertion Loss	AD6	BD6	<-3dB to 20 GHz
Return Loss	AD6	AD6	>10dB to 20 GHz
Near-End Crosstalk	AD6	AD4	<-20dB to 20 GHz
	AD6	AF6	<-20dB to 20 GHz
	AD6	AE7	<-20dB to 20 GHz
Far-End Crosstalk	AD6	BD4	<-20dB to 20 GHz
	AD6	BF6	<-20dB to 20 GHz
	AD6	BE7	<-20dB to 20 GHz

### Single-Ended 1:1 S/G Pattern Pin Map



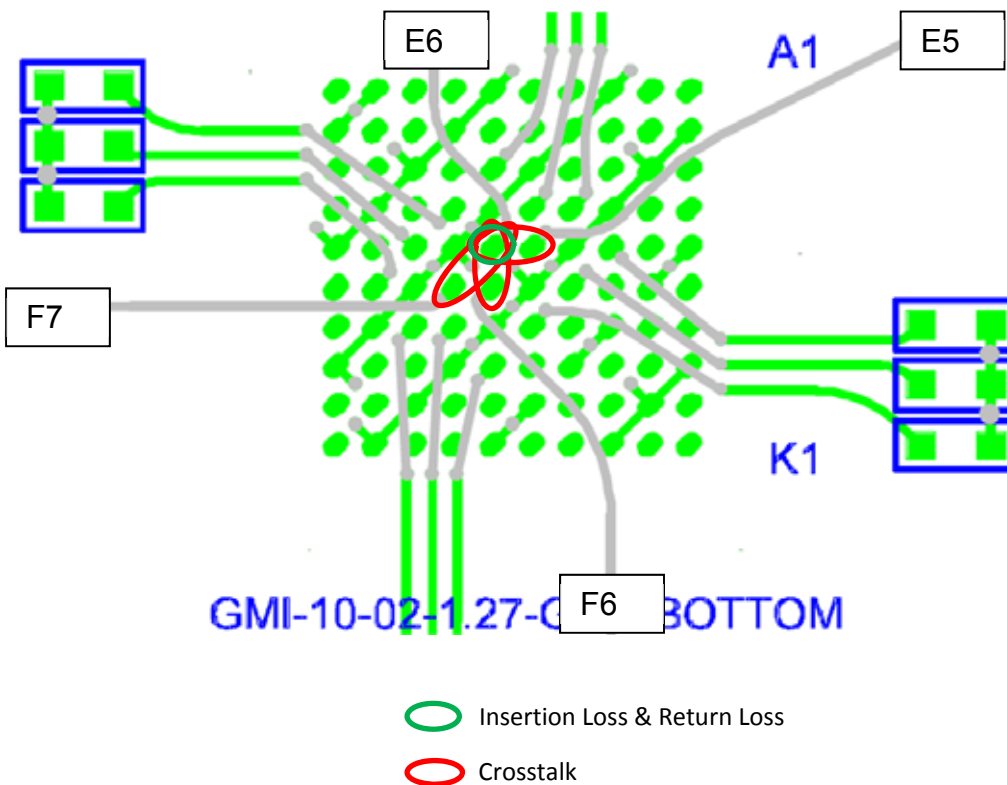
- Insertion Loss & Return Loss
- Crosstalk

Series: GMI

Description: Low Profile One Piece Array, 1.0mm x 1.0mm Grid, 1.27mm Stack Height

Table 2 - Single-Ended 2:1 S/G Pattern Performance			
Test Parameter	Driver	Receiver	
Insertion Loss	AE6	BE6	-3dB @ 11.64 GHz
Return Loss	AE6	AE6	>10dB to 20 GHz
Near-End Crosstalk	AE6	AE5	<-20dB to 2.64 GHz
	AE6	AF6	<-20dB to 8.15 GHz
	AE6	AF7	<-20dB to 10.58 GHz
Far-End Crosstalk	AE6	BE5	<-20dB to 7.41 GHz
	AE6	BF6	<-20dB to 20 GHz
	AE6	BF7	<-20dB to 11.28 GHz

### Single-Ended 2:1 S/G Pattern Pin Map

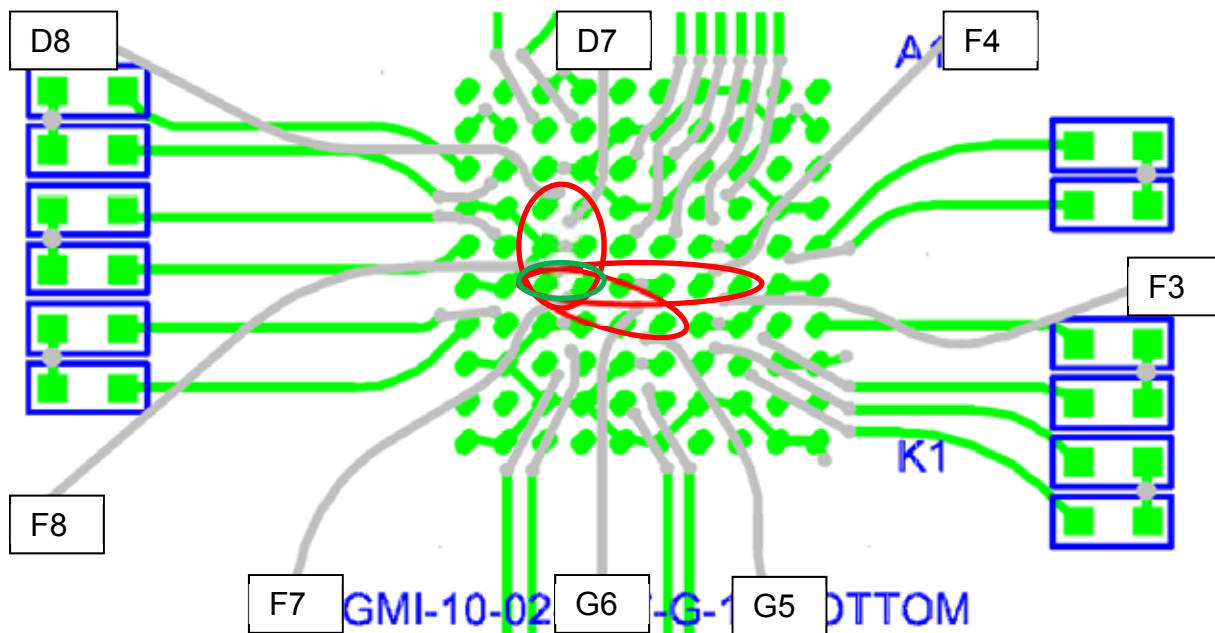


Series: GMI

Description: Low Profile One Piece Array, 1.0mm x 1.0mm Grid, 1.27mm Stack Height

Table 3 - Differential Optimal Horizontal Performance			
Test Parameter	Driver	Receiver	
Insertion Loss	AF7,AF8	BF7,BF8	-3dB @ 20 GHz
Return Loss	AF7,AF8	AF7,AF8	>10dB to 20 GHz
Near-End Crosstalk	AF7,AF8	AF3,AF4	<-20dB to 20 GHz
	AF7,AF8	AD7,AD8	<-20dB to 20 GHz
	AF7,AF8	AG5,AG6	<-20dB to 20 GHz
Far-End Crosstalk	AF7,AF8	BF3,BF4	<-20dB to 20 GHz
	AF7,AF8	BD7,BD8	<-20dB to 20 GHz
	AF7,AF8	BG5,BG6	<-20dB to 20 GHz

### Differential Optimal Horizontal Pin Map

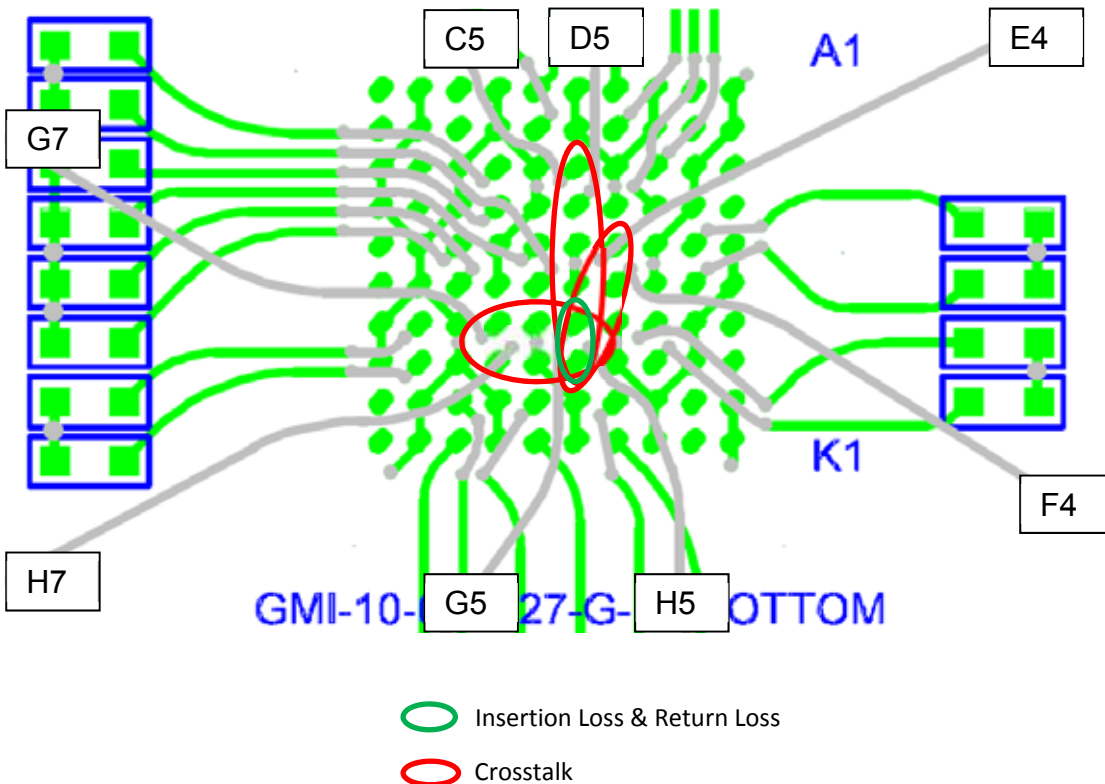


Series: GMI

Description: Low Profile One Piece Array, 1.0mm x 1.0mm Grid, 1.27mm Stack Height

Table 4 - Differential Optimal Vertical Performance			
Test Parameter	Driver	Receiver	
Insertion Loss	AG5,AH5	BG5,BH5	-3dB @ 20 GHz
Return Loss	AG5,AH5	AG5,AH5	>10dB to 20 GHz
Near-End Crosstalk	AG5,AH5	AG7,AH7	<-20dB to 20 GHz
	AG5,AH5	AC5,AD5	<-20dB to 20 GHz
	AG5,AH5	AE4,AF4	<-20dB to 20 GHz
Far-End Crosstalk	AG5,AH5	BG7,BH7	<-20dB to 20 GHz
	AG5,AH5	BC5,BD5	<-20dB to 20 GHz
	AG5,AH5	BE4,BF4	<-20dB to 20 GHz

### Differential Optimal Vertical Pin Map

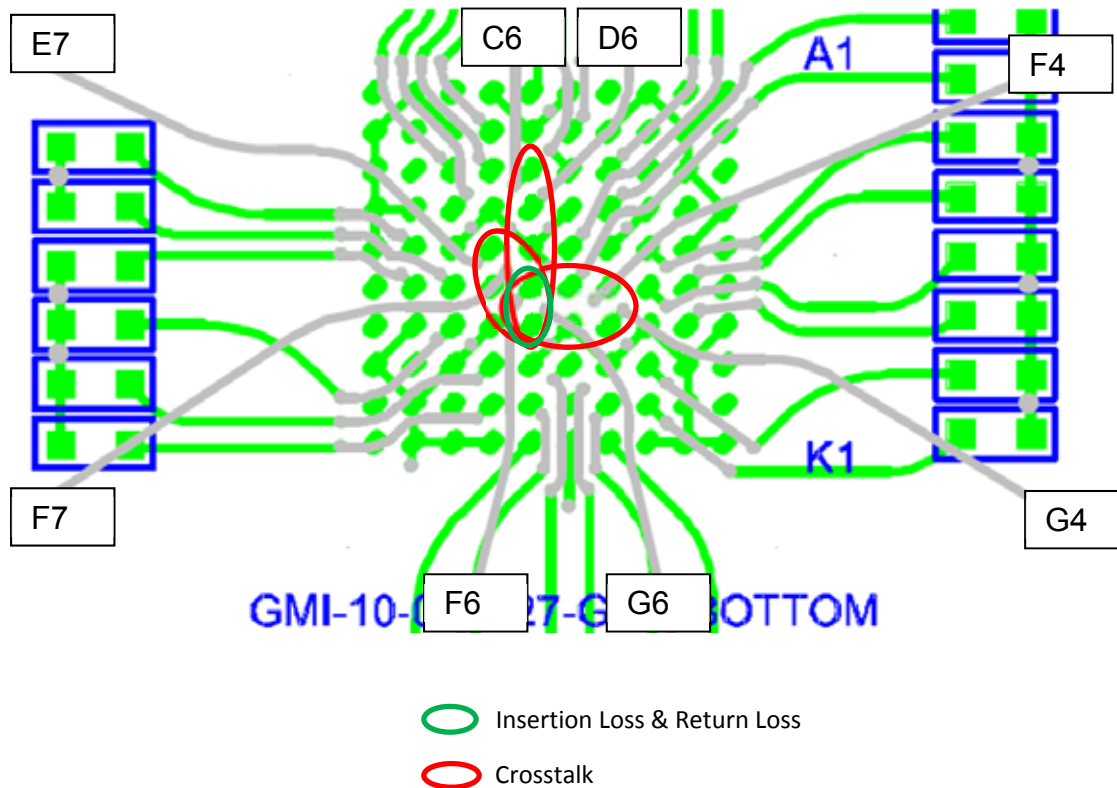


Series: GMI

Description: Low Profile One Piece Array, 1.0mm x 1.0mm Grid, 1.27mm Stack Height

Table 5 - Differential High Density Vertical Performance			
Test Parameter	Driver	Receiver	
Insertion Loss	AF6,AG6	BF6,BG6	-3dB @ 16.01 GHz
Return Loss	AF6,AG6	AF6,AG6	>10dB to 14.94 GHz
Near-End Crosstalk	AF6,AG6	AF4,AG4	<-20dB to 20 GHz
	AF6,AG6	AC6,AD6	<-20dB to 20 GHz
	AF6,AG6	AE7,AF7	<-20dB to 16.15 GHz
Far-End Crosstalk	AF6,AG6	BF4,BG4	<-20dB to 20 GHz
	AF6,AG6	BC6,BD6	<-20dB to 20 GHz
	AF6,AG6	BE7,BF7	<-20dB to 15.91 GHz

### Differential High Density Vertical Pin Map



**Series:** GMI

**Description:** Low Profile One Piece Array, 1.0mm x 1.0mm Grid, 1.27mm Stack Height

## Bandwidth Charts – Single-Ended & Differential Insertion Loss

GMI Array Series

