

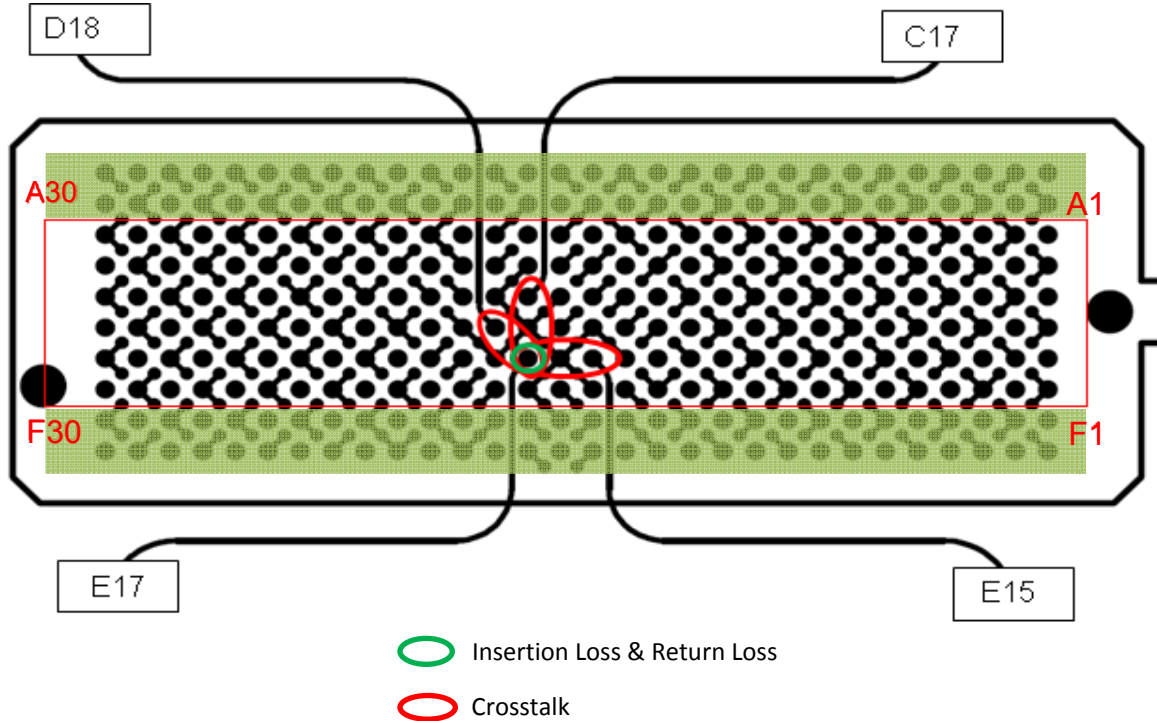
Series: LPAM/LPAF

Description: Low Profile, Open Pin Field Array, 1.27mm x 1.27mm Pitch, 4mm Stack Height

Frequency Domain Data Summary

Table 1 - Single-Ended 1:1 S/G Pattern Performance			
Test Parameter	Driver	Receiver	
Insertion Loss	LPAM_E17	LPAF_E17	3dB@ 16.4 GHz
Return Loss	LPAM_E17	LPAM_E17	>10dB to 11.1 GHz
Near-End Crosstalk	LPAM_E17	LPAM_C17	<-20dB to 20.0 GHz
	LPAM_E17	LPAM_D18	<-20dB to 20.0 GHz
	LPAM_E17	LPAM_E15	<-20dB to 20.0 GHz
Far-End Crosstalk	LPAM_E17	LPAF_C17	<-20dB to 20.0 GHz
	LPAM_E17	LPAF_D18	<-20dB to 20.0 GHz
	LPAM_E17	LPAF_E15	<-20dB to 20.0 GHz

Single-Ended 1:1 S/G Pattern Pin Map

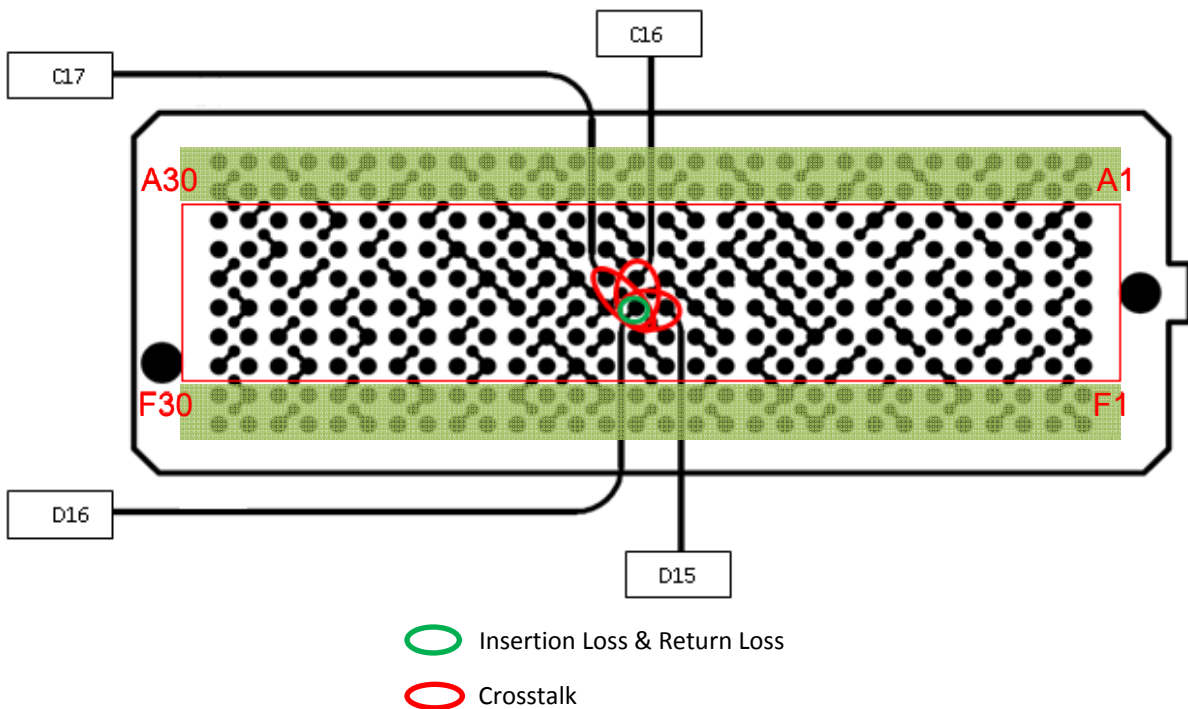


Series: LPAM/LPAF

Description: Low Profile, Open Pin Field Array, 1.27mm x 1.27mm Pitch, 4mm Stack Height

Table 2 - Single-Ended 2:1 S/G Pattern Performance			
Test Parameter	Driver	Receiver	
Insertion Loss	LPAM_D16	LPAF_D16	3dB@ 17.0 GHz
Return Loss	LPAM_D16	LPAM_D16	>10dB to 10.8 GHz
Near-End Crosstalk	LPAM_D16	LPAM_C16	<-20dB to 4.3 GHz
	LPAM_D16	LPAM_C17	<-20dB to 20.0 GHz
	LPAM_D16	LPAM_D15	<-20dB to 3.4 GHz
Far-End Crosstalk	LPAM_D16	LPAF_C16	<-20dB to 7.9 GHz
	LPAM_D16	LPAF_C17	<-20dB to 20.0 GHz
	LPAM_D16	LPAF_D15	<-20dB to 8.1 GHz

Single-Ended 2:1 S/G Pattern Pin Map

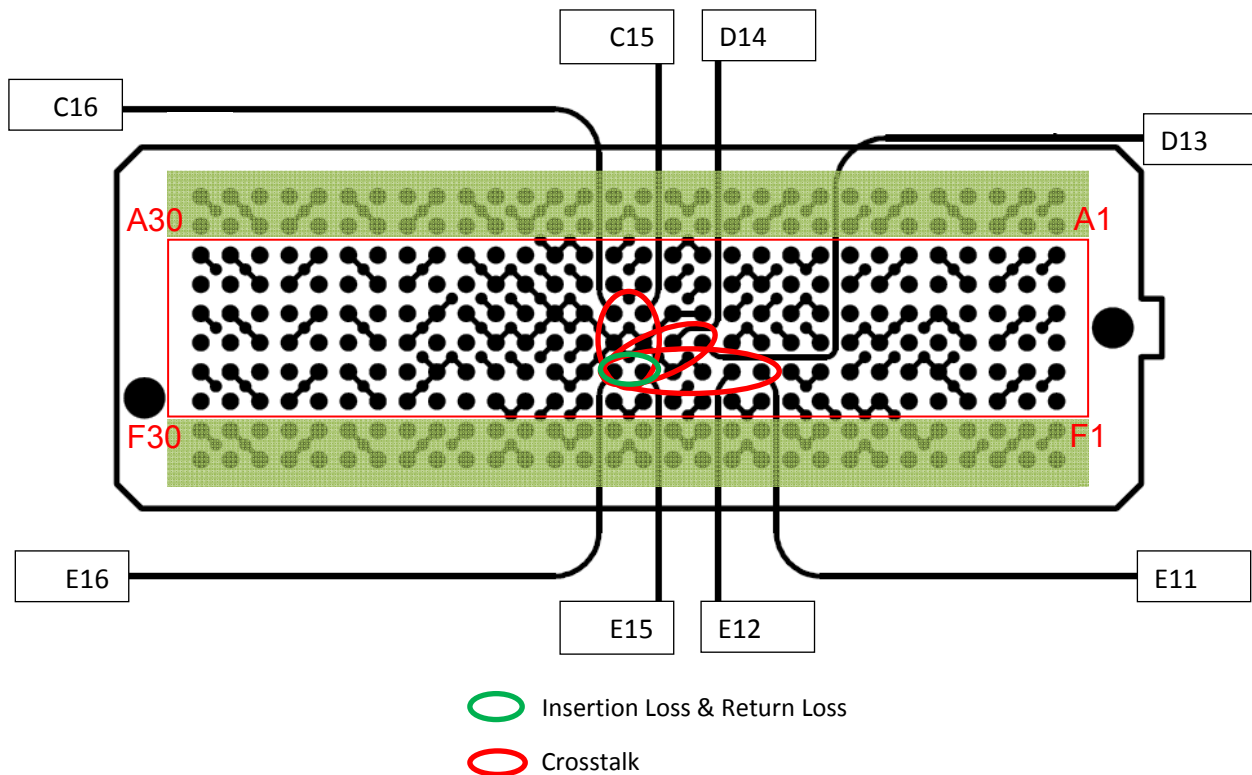


Series: LPAM/LPAF

Description: Low Profile, Open Pin Field Array, 1.27mm x 1.27mm Pitch, 4mm Stack Height

Table 3 - Differential Optimal Horizontal Performance			
Test Parameter	Driver	Receiver	
Insertion Loss	LPAM_E15,E16	LPAF_E15,E16	3dB@ 18.4 GHz
Return Loss	LPAM_E15,E16	LPAM_E15,E16	>10dB to 13.45 GHz
Near-End Crosstalk	LPAM_E15,E16	LPAM_C15,C16	<-20dB to 20.0 GHz
	LPAM_E15,E16	LPAM_D13,D14	<-20dB to 20.0 GHz
	LPAM_E15,E16	LPAM_E11,E12	<-20dB to 20.0 GHz
Far-End Crosstalk	LPAM_E15,E16	LPAF_C15,C16	<-20dB to 20.0 GHz
	LPAM_E15,E16	LPAF_D13,D14	<-20dB to 20.0 GHz
	LPAM_E15,E16	LPAF_E11,E12	<-20dB to 20.0 GHz

Differential Optimal Horizontal Pin Map

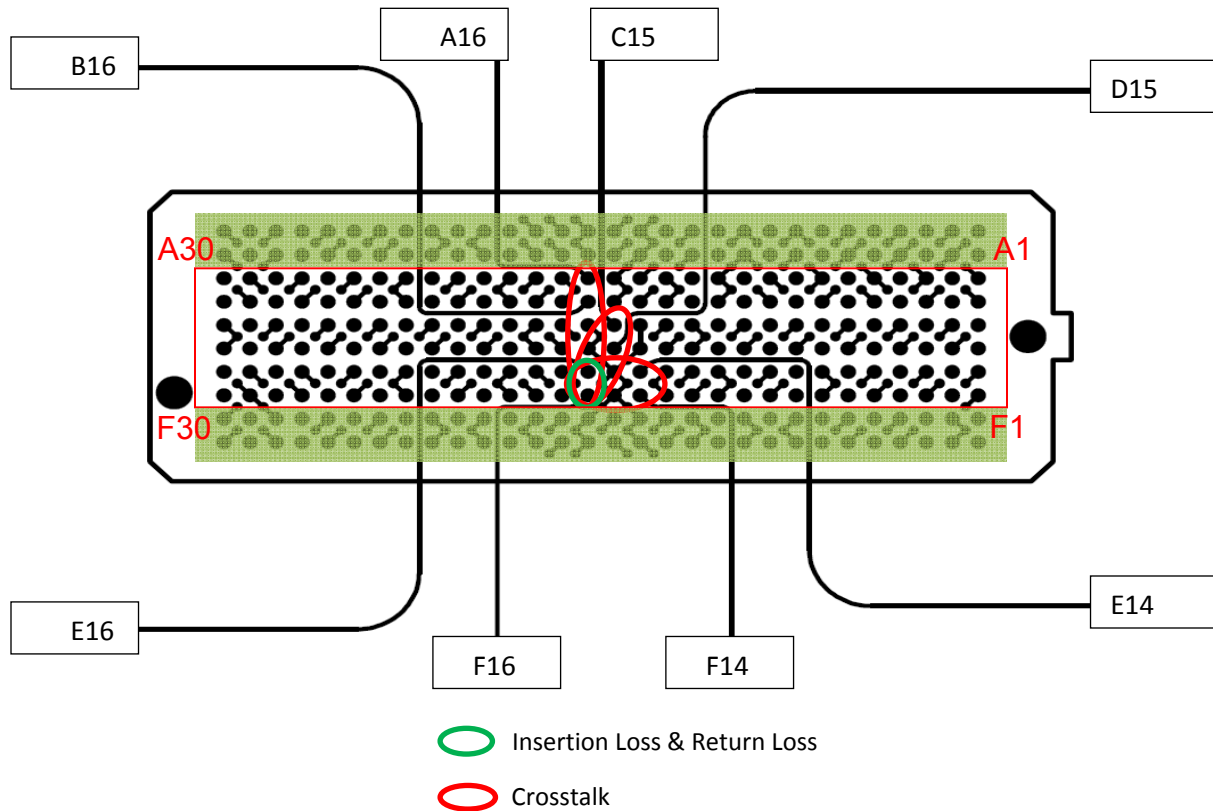


Series: LPAM/LPAF

Description: Low Profile, Open Pin Field Array, 1.27mm x 1.27mm Pitch, 4mm Stack Height

Table 4 - Differential Optimal Vertical Performance			
Test Parameter	Driver	Receiver	
Insertion Loss	LPAM_E16,F16	LPAF_E16,F16	3dB@ 17.2 GHz
Return Loss	LPAM_E16,F16	LPAM_E16,F16	>10dB to 14.7 GHz
Near-End Crosstalk	LPAM_E16,F16	LPAM_A16,B16	<-20dB to 20.0 GHz
	LPAM_E16,F16	LPAM_C15,D15	<-20dB to 20.0 GHz
	LPAM_E16,F16	LPAM_E14,F14	<-20dB to 20.0 GHz
Far-End Crosstalk	LPAM_E16,F16	LPAF_A16,B16	<-20dB to 20.0 GHz
	LPAM_E16,F16	LPAF_C15,D15	<-20dB to 20.0 GHz
	LPAM_E16,F16	LPAF_E14,F14	<-20dB to 20.0 GHz

Differential Optimal Vertical Pin Map

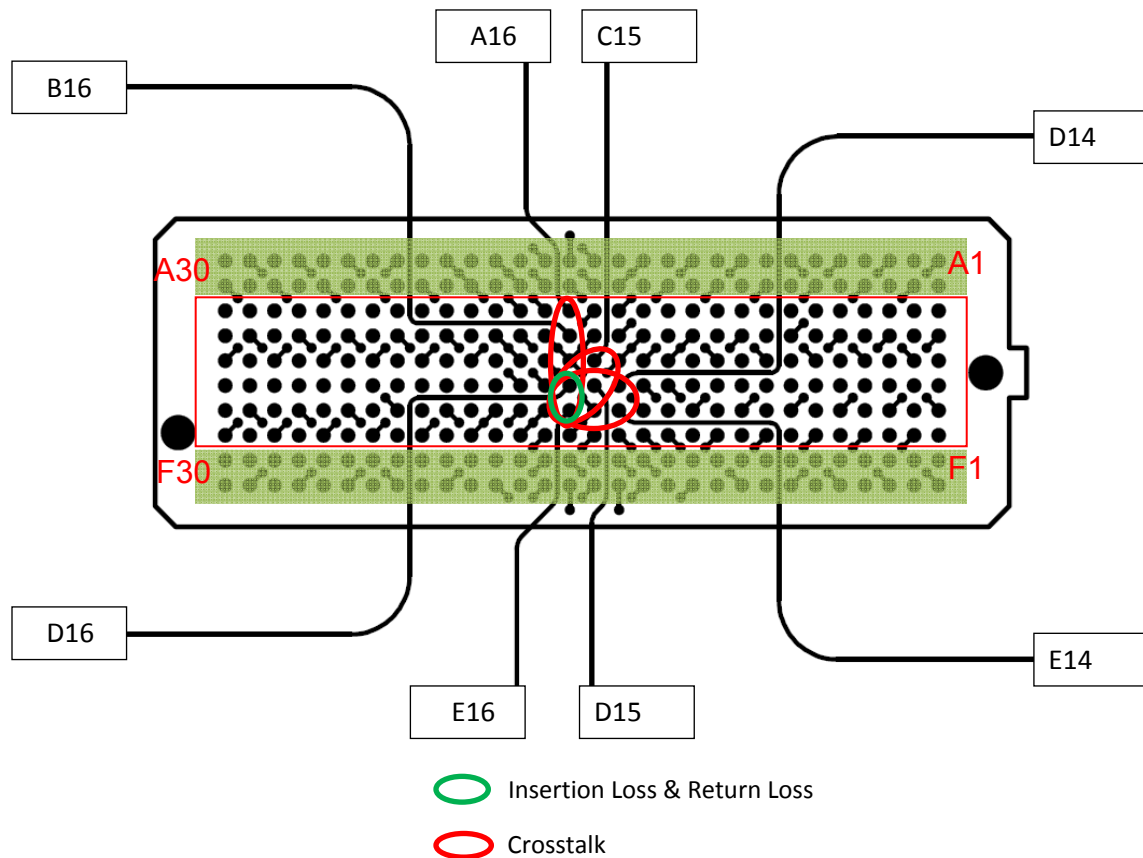


Series: LPAM/LPAF

Description: Low Profile, Open Pin Field Array, 1.27mm x 1.27mm Pitch, 4mm Stack Height

Table 5 - Differential High Density Vertical Performance			
Test Parameter	Driver	Receiver	
Insertion Loss	LPAM_D16,E16	LPAF_D16,E16	3dB@ 17.1 GHz
Return Loss	LPAM_D16,E16	LPAM_D16,E16	>10dB to 13.1 GHz
Near-End Crosstalk	LPAM_D16,E16	LPAM_A16,B16	<-20dB to 20.0 GHz
	LPAM_D16,E16	LPAM_C15,D15	<-20dB to 20.0 GHz
	LPAM_D16,E16	LPAM_D14,E14	<-20dB to 20.0 GHz
Far-End Crosstalk	LPAM_D16,E16	LPAF_A16,B16	<-20dB to 20.0 GHz
	LPAM_D16,E16	LPAF_C15,D15	<-20dB to 20.0 GHz
	LPAM_D16,E16	LPAF_D14,E14	<-20dB to 20.0 GHz

Differential High Density Vertical Pin Map



Series: LPAM/LPAF

Description: Low Profile, Open Pin Field Array, 1.27mm x 1.27mm Pitch, 4mm Stack Height

Bandwidth Charts – Single-Ended & Differential Insertion Loss

LPAM/LPAF Array Series

