

Series: SEAM8/SEAF8-RA Array Series

Description: 0.8mm x 0.8mm grid interconnect system, Vertical Male to Right Angle Female

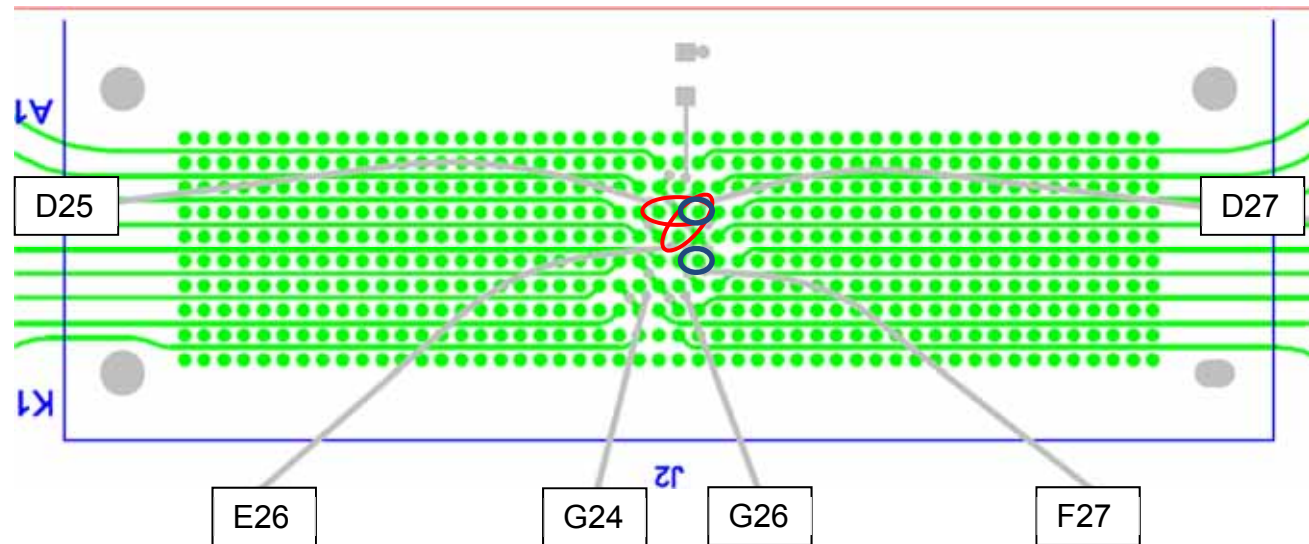
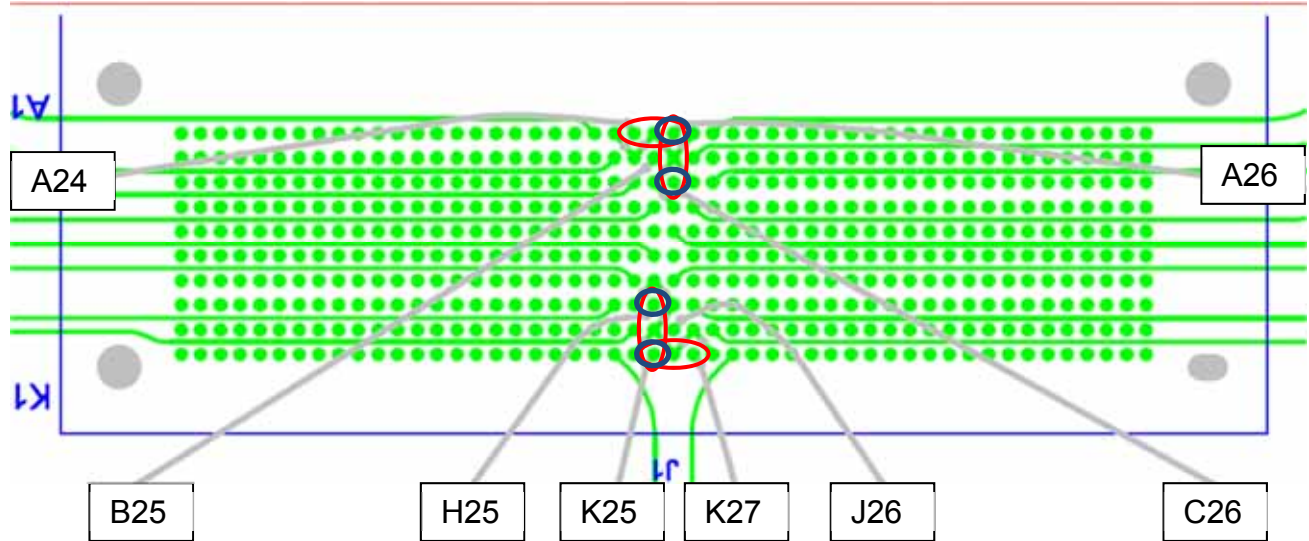
Frequency Domain Data Summary

Table 1 - Single-Ended 1:1 S/G Pattern Performance			
Test Parameter	Driver	Receiver	
Insertion Loss	SEAM8_A26	SEAF8-RA_A26	<-3dB to 16.58 GHz
	SEAM8_C26	SEAF8-RA_C26	<-3dB to 13.55 GHz
	SEAM8_D27	SEAF8-RA_D27	<-3dB to 17.59 GHz
	SEAM8_F27	SEAF8-RA_F27	<-3dB to 13.44 GHz
	SEAM8_H25	SEAF8-RA_H25	<-3dB to 12.08 GHz
	SEAM8_K25	SEAF8-RA_K25	<-3dB to 13.78 GHz
Return Loss	SEAM8_A26	SEAM8_A26	>10dB to 7.11 GHz
	SEAM8_C26	SEAM8_C26	>10dB to 8.46 GHz
	SEAM8_D27	SEAM8_D27	>10dB to 10.51 GHz
	SEAM8_F27	SEAM8_F27	>10dB to 8.56 GHz
	SEAM8_H25	SEAM8_H25	>10dB to 7.46 GHz
	SEAM8_K25	SEAM8_K25	>10dB to 10.40 GHz
Near-End Crosstalk	SEAM8_A26	SEAM8_A24	<-20dB to 19.08 GHz
	SEAM8_A26	SEAM8_C26	<-20dB to 20 GHz
	SEAM8_D27	SEAM8_D25	<-20dB to 20 GHz
	SEAM8_D27	SEAM8_F27	<-20dB to 20 GHz
	SEAM8_K25	SEAM8_K27	<-20dB to 14.98 GHz
	SEAM8_K25	SEAM8_H25	<-20dB to 17.79 GHz
Far-End Crosstalk	SEAM8_A26	SEAF8-RA_A24	<-20dB to 14.54 GHz
	SEAM8_A26	SEAF8-RA_C26	<-20dB to 20 GHz
	SEAM8_D27	SEAF8-RA_D25	<-20dB to 20 GHz
	SEAM8_D27	SEAF8-RA_F27	<-20dB to 20 GHz
	SEAM8_K25	SEAF8-RA_K27	<-20dB to 9.9 GHz
	SEAM8_K25	SEAF8-RA_H25	<-20dB to 11.16 GHz



Series: SEAM8/SEAF8-RA Array Series

Description: 0.8mm x 0.8mm grid interconnect system, Vertical Male to Right Angle Female

Single-Ended 1:1 S/G Pattern Pin Map



SEAF8_RA

-  Insertion Loss & Return Loss
-  Crosstalk

Series: SEAM8/SEAF8-RA Array Series

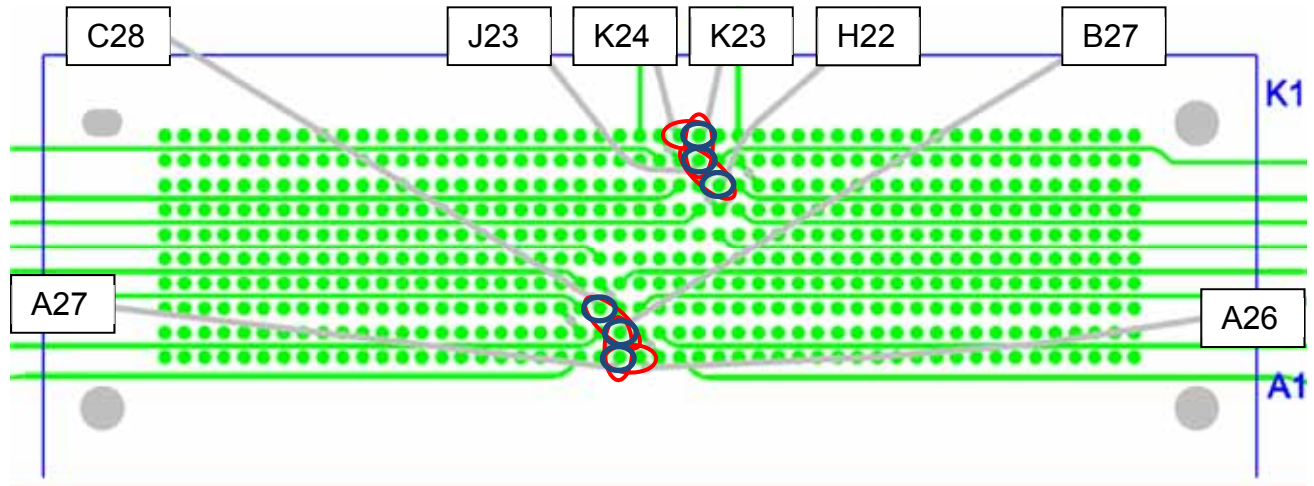
Description: 0.8mm x 0.8mm grid interconnect system, Vertical Male to Right Angle Female

Table 2 - Single-Ended 2:1 S/G Pattern Performance			
Test Parameter	Driver	Receiver	
Insertion Loss	SEAM8_A27	SEAF8-RA_A27	<-3dB to 15.51 GHz
	SEAM8_B27	SEAF8-RA_B27	<-3dB to 14.05 GHz
	SEAM8_C28	SEAF8-RA_C28	<-3dB to 14.08 GHz
	SEAM8_H22	SEAF8-RA_H22	<-3dB to 13.78 GHz
	SEAM8_J23	SEAF8-RA_J23	<-3dB to 14.59 GHz
	SEAM8_K23	SEAF8-RA_K23	<-3dB to 11.96 GHz
Return Loss	SEAM8_A27	SEAM8_A27	>10dB to 11.73 GHz
	SEAM8_B27	SEAM8_B27	>10dB to 10.26 GHz
	SEAM8_C28	SEAM8_C28	>10dB to 10.68 GHz
	SEAM8_H22	SEAM8_H22	>10dB to 11.93 GHz
	SEAM8_J23	SEAM8_J23	>10dB to 7.04 GHz
	SEAM8_K23	SEAM8_K23	>10dB to 10.46 GHz
Near-End Crosstalk	SEAM8_A27	SEAM8_A26	<-20dB to 0.65 GHz
	SEAM8_A27	SEAM8_B27	<-20dB to 1.80 GHz
	SEAM8_B27	SEAM8_C28	<-20dB to 20 GHz
	SEAM8_K23	SEAM8_K24	<-20dB to 0.33 GHz
	SEAM8_K23	SEAM8_J23	<-20dB to 0.63 GHz
	SEAM8_H22	SEAM8_J23	<-20dB to 20 GHz
Far-End Crosstalk	SEAM8_A27	SEAF8-RA_A26	<-20dB to 2.3 GHz
	SEAM8_A27	SEAF8-RA_B27	<-20dB to 13.03 GHz
	SEAM8_B27	SEAF8-RA_C28	<-20dB to 18.10 GHz
	SEAM8_K23	SEAF8-RA_K24	<-20dB to 3.68 GHz
	SEAM8_K23	SEAF8-RA_J23	<-20dB to 20 GHz
	SEAM8_H22	SEAF8-RA_J23	<-20dB to 20 GHz



Series: SEAM8/SEAF8-RA Array Series

Description: 0.8mm x 0.8mm grid interconnect system, Vertical Male to Right Angle Female

Single-Ended 2:1 S/G Pattern Pin Map



SEAF8_RA

-  Insertion Loss & Return Loss
-  Crosstalk

Series: SEAM8/SEAF8-RA Array Series

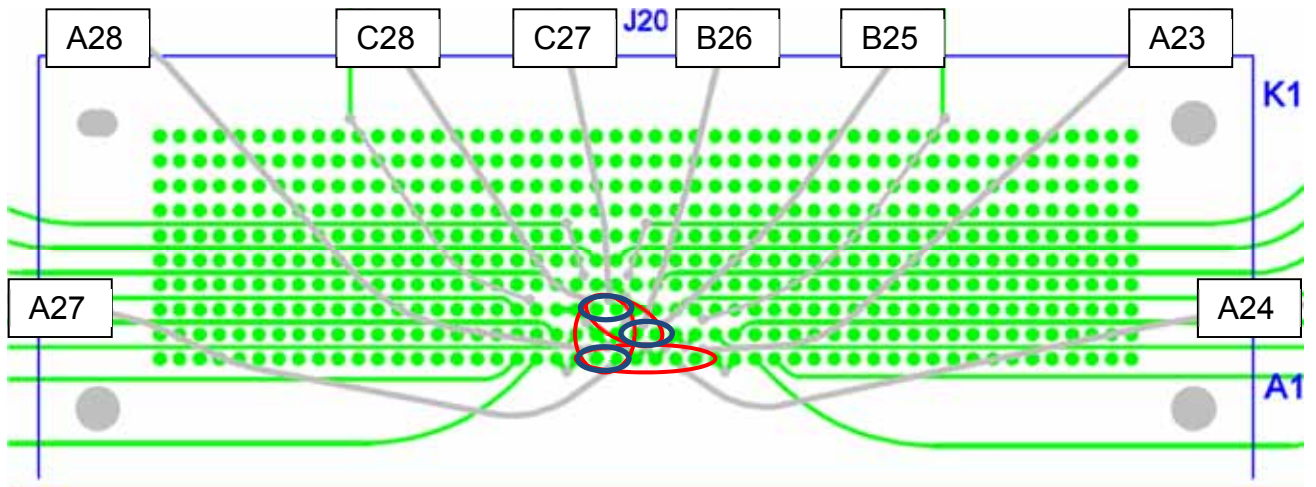
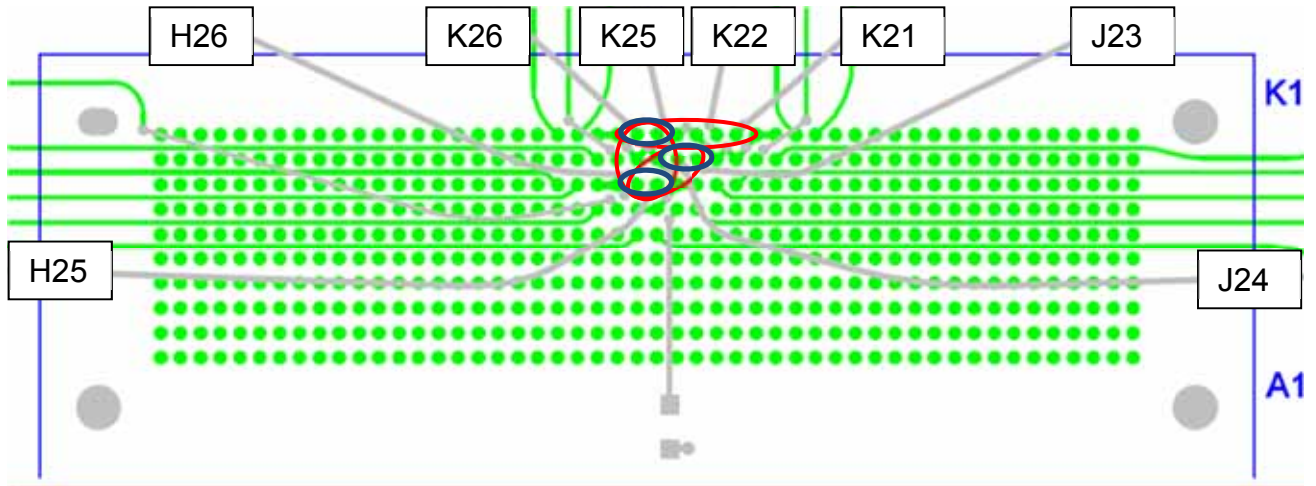
Description: 0.8mm x 0.8mm grid interconnect system, Vertical Male to Right Angle Female

Table 3 - Differential Optimal Horizontal Performance			
Test Parameter	Driver	Receiver	
Insertion Loss	SEAM8_A27,A28	SEAF8-RA_A27,A28	<-3dB to 17.88 GHz
	SEAM8_B25,B26	SEAF8-RA_B25,B26	<-3dB to 14.45 GHz
	SEAM8_C27,C28	SEAF8-RA_C27,C28	<-3dB to 12.60 GHz
	SEAM8_H25,H26	SEAF8-RA_H25,H26	<-3dB to 11.63 GHz
	SEAM8_J23,J24	SEAF8-RA_J23,J24	<-3dB to 7.28 GHz
	SEAM8_K25,K26	SEAF8-RA_K25,K26	<-3dB to 11.65 GHz
Return Loss	SEAM8_A27,A28	SEAM8_A27,A28	>10dB to 8.38 GHz
	SEAM8_B25,B26	SEAM8_B25,B26	>10dB to 6.43 GHz
	SEAM8_C27,C28	SEAM8_C27,C28	>10dB to 5.99 GHz
	SEAM8_H25,H26	SEAM8_H25,H26	>10dB to 6.76 GHz
	SEAM8_J23,J24	SEAM8_J23,J24	>10dB to 6.63 GHz
	SEAM8_K25,K26	SEAM8_K25,K26	>10dB to 7.78 GHz
Near-End Crosstalk	SEAM8_A27,A28	SEAM8_A23,A24	<-20dB to 20 GHz
	SEAM8_A27,A28	SEAM8_C27,C28	<-20dB to 20 GHz
	SEAM8_B25,B26	SEAM8_C27,C28	<-20dB to 20 GHz
	SEAM8_K25,K26	SEAM8_K21,K22	<-20dB to 20 GHz
	SEAM8_K25,K26	SEAM8_H25,H26	<-20dB to 11.66 GHz
	SEAM8_H25,H26	SEAM8_J23,J24	<-20dB to 20 GHz
	SEAM8_A27,A28	SEAM8_A23,A24	<-20dB to 20 GHz
Far-End Crosstalk	SEAM8_A27,A28	SEAF8-RA_C27,C28	<-20dB to 20 GHz
	SEAM8_B25,B26	SEAF8-RA_C27,C28	<-20dB to 20 GHz
	SEAM8_K25,K26	SEAF8-RA_K21,K22	<-20dB to 20 GHz
	SEAM8_K25,K26	SEAF8-RA_H25,H26	<-20dB to 7.79 GHz
	SEAM8_H25,H26	SEAF8-RA_J23,J24	<-20dB to 20 GHz
	SEAM8_A27,A28	SEAF8-RA_A27,A28	<-3dB to 17.88 GHz
	SEAM8_B25,B26	SEAF8-RA_B25,B26	<-3dB to 14.45 GHz



Series: SEAM8/SEAF8-RA Array Series

Description: 0.8mm x 0.8mm grid interconnect system, Vertical Male to Right Angle Female

Differential Optimal Horizontal Pin Map



SEAF8_RA

-  Insertion Loss & Return Loss
-  Crosstalk

Series: SEAM8/SEAF8-RA Array Series

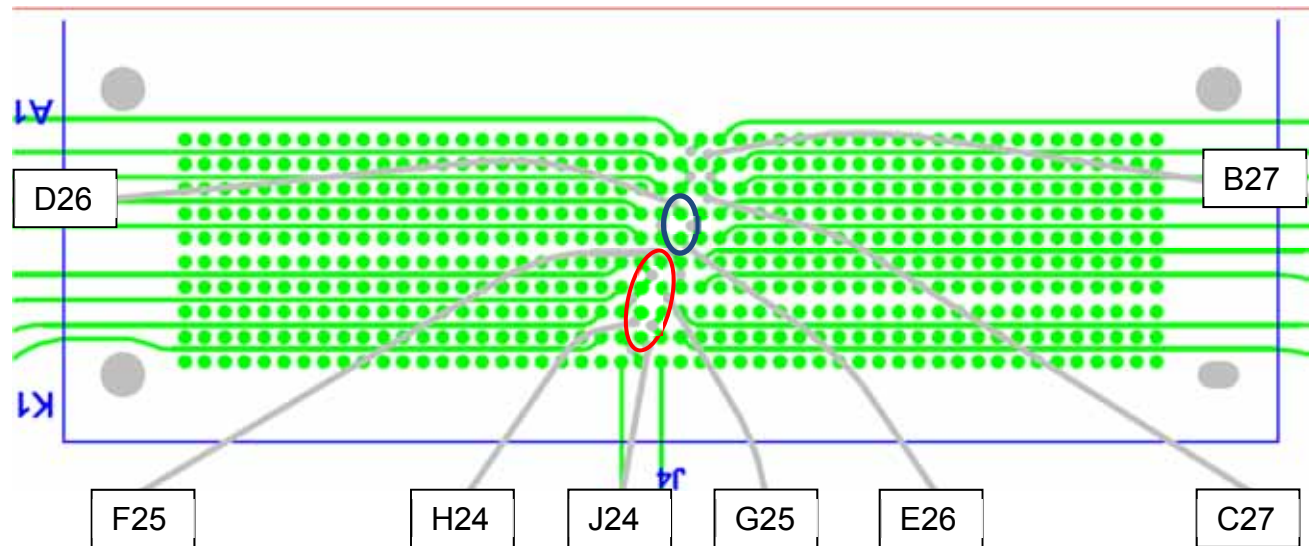
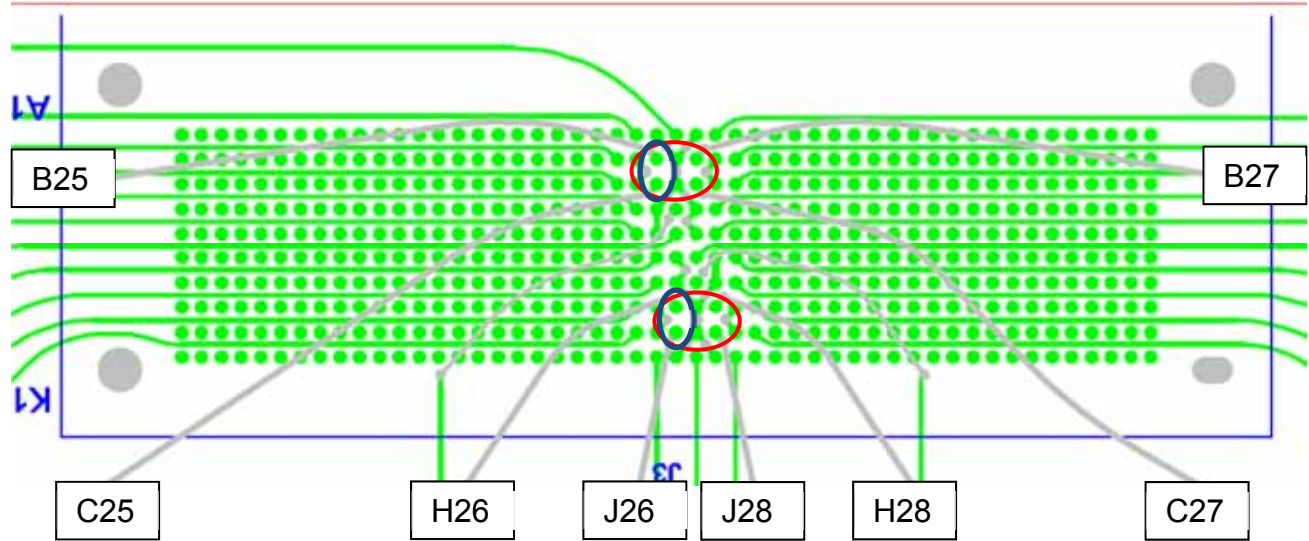
Description: 0.8mm x 0.8mm grid interconnect system, Vertical Male to Right Angle Female

Table 4 - Differential Optimal Vertical Performance			
Test Parameter	Driver	Receiver	
Insertion Loss	SEAM8_A26,B26	SEAF8-RA_A26,B26	<-3dB to 14.19 GHz
	SEAM8_B25,C25	SEAF8-RA_B25,C25	<-3dB to 14.38 GHz
	SEAM8_D26,E26	SEAF8-RA_D26,E26	<-3dB to 12.10 GHz
	SEAM8_E26,F26	SEAF8-RA_E26,F26	<-3dB to 13.61 GHz
	SEAM8_H26,J26	SEAF8-RA_H26,J26	<-3dB to 13.48 GHz
	SEAM8_J26,K26	SEAF8-RA_J26,K26	<-3dB to 10.46 GHz
Return Loss	SEAM8_A26,B26	SEAM8_A26,B26	>10dB to 8.58 GHz
	SEAM8_B25,C25	SEAM8_B25,C25	>10dB to 10.90 GHz
	SEAM8_D26,E26	SEAM8_D26,E26	>10dB to 10.68 GHz
	SEAM8_E26,F26	SEAM8_E26,F26	>10dB to 8.54 GHz
	SEAM8_H26,J26	SEAM8_H26,J26	>10dB to 11.06 GHz
	SEAM8_J26,K26	SEAM8_J26,K26	>10dB to 6.90 GHz
Near-End Crosstalk	SEAM8_B25,C25	SEAM8_B27,C27	<-20dB to 20 GHz
	SEAM8_H26,J26	SEAM8_H28,J28	<-20dB to 20 GHz
	SEAM8_F25,G25	SEAM8_H24,J24	<-20dB to 20 GHz
	SEAM8_J26,K26	SEAM8_E26,F26	<-20dB to 20 GHz
	SEAM8_A26,B26	SEAM8_E26,F26	<-20dB to 20 GHz
	SEAM8_A26,B26	SEAM8_C25,D25	<-20dB to 20 GHz
Far-End Crosstalk	SEAM8_B25,C25	SEAF8-RA_B27,C27	<-20dB to 20 GHz
	SEAM8_H26,J26	SEAF8-RA_H28,J28	<-20dB to 7.44 GHz
	SEAM8_F25,G25	SEAF8-RA_H24,J24	<-20dB to 20 GHz
	SEAM8_J26,K26	SEAF8-RA_E26,F26	<-20dB to 20 GHz
	SEAM8_A26,B26	SEAF8-RA_E26,F26	<-20dB to 20 GHz
	SEAM8_A26,B26	SEAF8-RA_C25,D25	<-20dB to 20 GHz

Series: SEAM8/SEAF8-RA Array Series

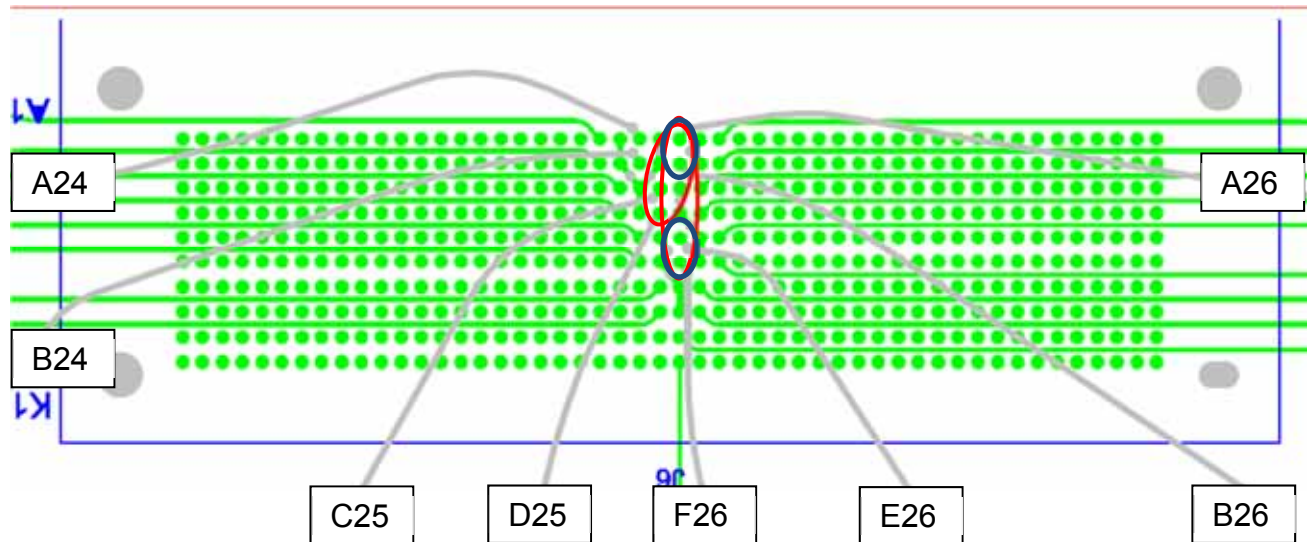
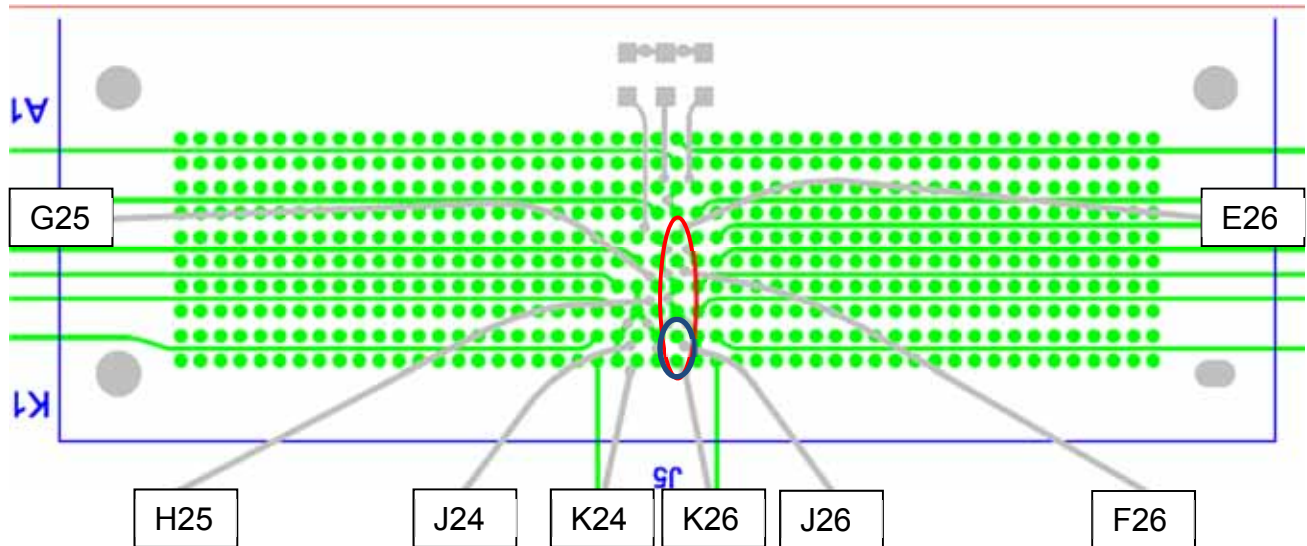
Description: 0.8mm x 0.8mm grid interconnect system, Vertical Male to Right Angle Female

Differential Optimal Vertical Pin Map





Series: SEAM8/SEAF8-RA Array Series

Description: 0.8mm x 0.8mm grid interconnect system, Vertical Male to Right Angle Female



SEAF8_RA

-  Insertion Loss & Return Loss
-  Crosstalk

Series: SEAM8/SEAF8-RA Array Series

Description: 0.8mm x 0.8mm grid interconnect system, Vertical Male to Right Angle Female

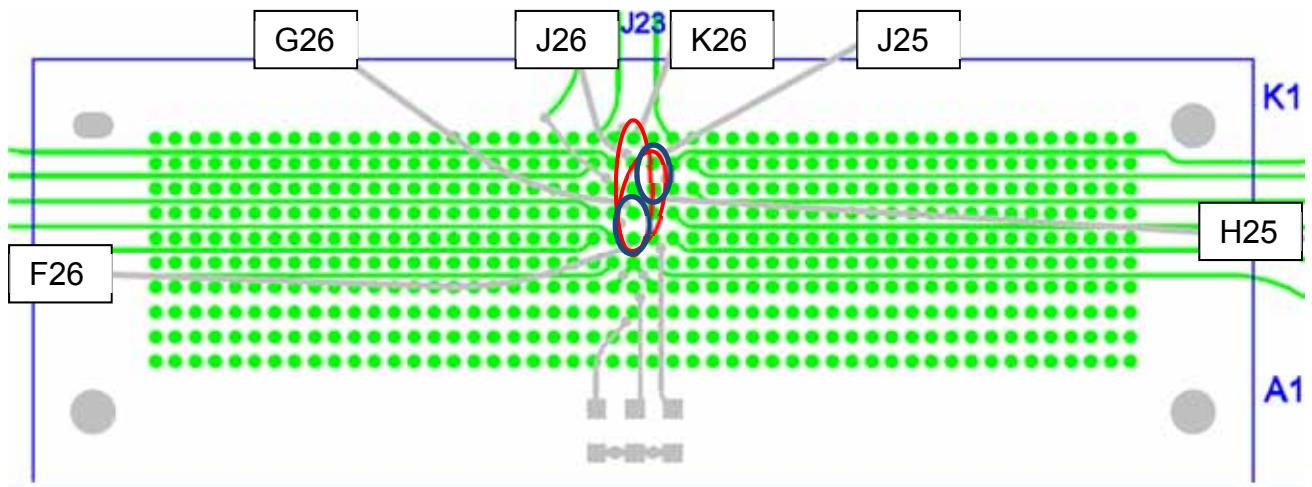
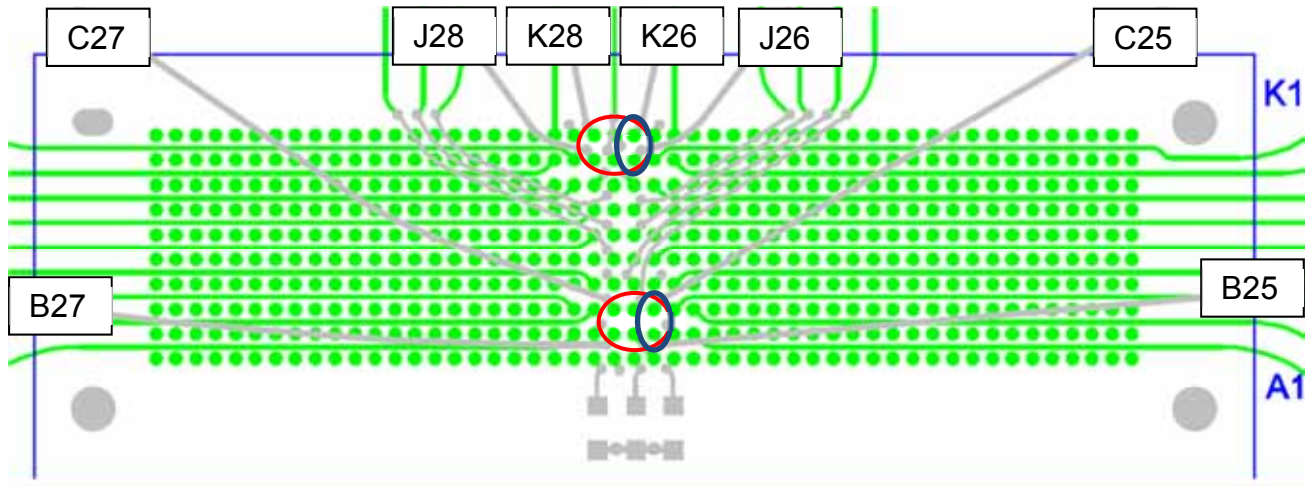
Table 5 - Differential High Density Vertical Performance

Test Parameter	Driver	Receiver	
Insertion Loss	SEAM8_A26,B26	SEAF8-RA_A26,B26	<-3dB to 13.31 GHz
	SEAM8_B25,C25	SEAF8-RA_B25,C25	<-3dB to 13.20 GHz
	SEAM8_D26,E26	SEAF8-RA_D26,E26	<-3dB to 12.08 GHz
	SEAM8_F26,G26	SEAF8-RA_F26,G26	<-3dB to 12.34 GHz
	SEAM8_H25,J25	SEAF8-RA_H25,J25	<-3dB to 11.78 GHz
	SEAM8_J26,K26	SEAF8-RA_J26,K26	<-3dB to 13.90 GHz
Return Loss	SEAM8_A26,B26	SEAM8_A26,B26	>10dB to 10.10 GHz
	SEAM8_B25,C25	SEAM8_B25,C25	>10dB to 12.05 GHz
	SEAM8_D26,E26	SEAM8_D26,E26	>10dB to 10.15 GHz
	SEAM8_F26,G26	SEAM8_F26,G26	>10dB to 8.63 GHz
	SEAM8_H25,J25	SEAM8_H25,J25	>10dB to 11.58 GHz
	SEAM8_J26,K26	SEAM8_J26,K26	>10dB to 10.30 GHz
Near-End Crosstalk	SEAM8_B25,C25	SEAM8_B27,C27	<-20dB to 20 GHz
	SEAM8_J26,K26	SEAM8_J28,K28	<-20dB to 20 GHz
	SEAM8_F26,G26	SEAM8_H25,J25	<-20dB to 20 GHz
	SEAM8_F26,G26	SEAM8_J26,K26	<-20dB to 20 GHz
	SEAM8_A26,B26	SEAM8_D26,E26	<-20dB to 20 GHz
	SEAM8_A26,B26	SEAM8_B25,C25	<-20dB to 16.66 GHz
Far-End Crosstalk	SEAM8_B25,C25	SEAF8-RA_B27,C27	<-20dB to 20 GHz
	SEAM8_J26,K26	SEAF8-RA_J28,K28	<-20dB to 20 GHz
	SEAM8_F26,G26	SEAF8-RA_H25,J25	<-20dB to 20 GHz
	SEAM8_F26,G26	SEAF8-RA_J26,K26	<-20dB to 20 GHz
	SEAM8_A26,B26	SEAF8-RA_D26,E26	<-20dB to 20 GHz
	SEAM8_A26,B26	SEAF8-RA_B25,C25	<-20dB to 18.34 GHz

Series: SEAM8/SEAF8-RA Array Series

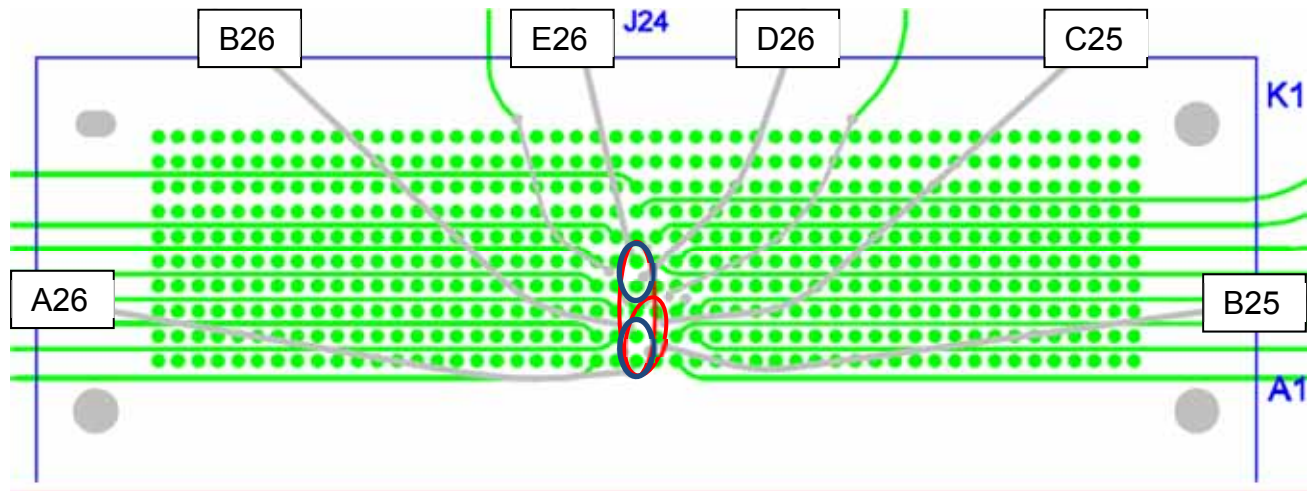
Description: 0.8mm x 0.8mm grid interconnect system, Vertical Male to Right Angle Female

Differential High Density Vertical Pin Map





Series: SEAM8/SEAF8-RA Array Series

Description: 0.8mm x 0.8mm grid interconnect system, Vertical Male to Right Angle Female



SEAF8_RA

-  Insertion Loss & Return Loss
-  Crosstalk

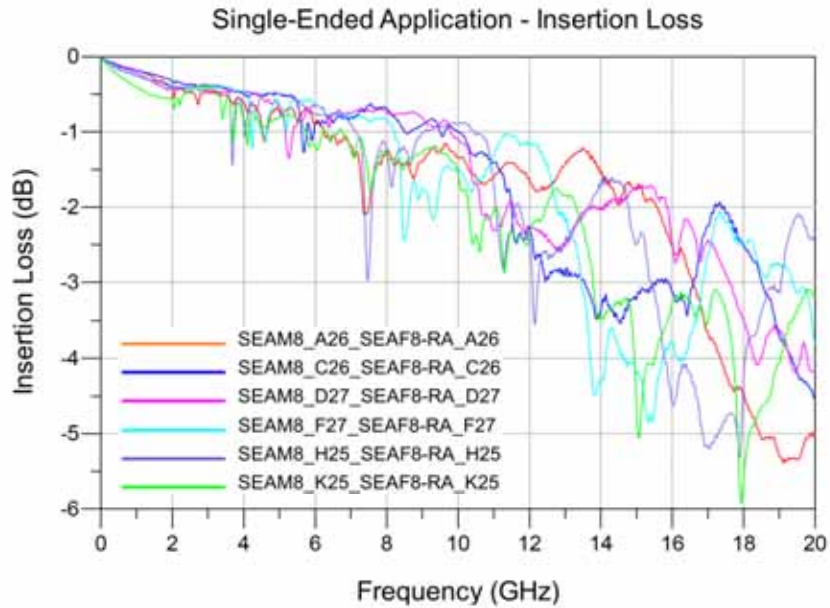
Series: SEAM8/SEAF8-RA Array Series

Description: 0.8mm x 0.8mm grid interconnect system, Vertical Male to Right Angle Female

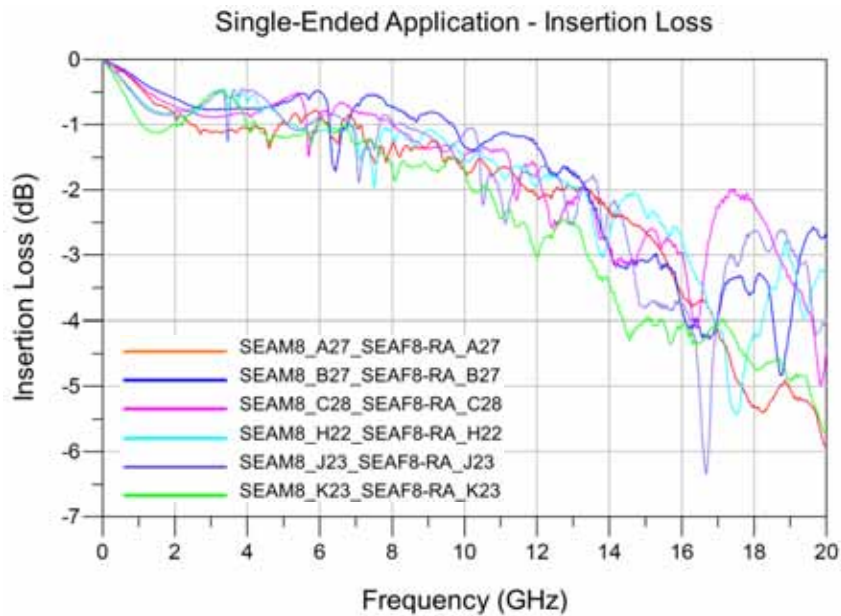
Bandwidth Charts – Single-Ended & Differential Insertion Loss

SEAM8-2mm/SEAF8-RA Array Series

Single-Ended 1:1 S/G Pattern



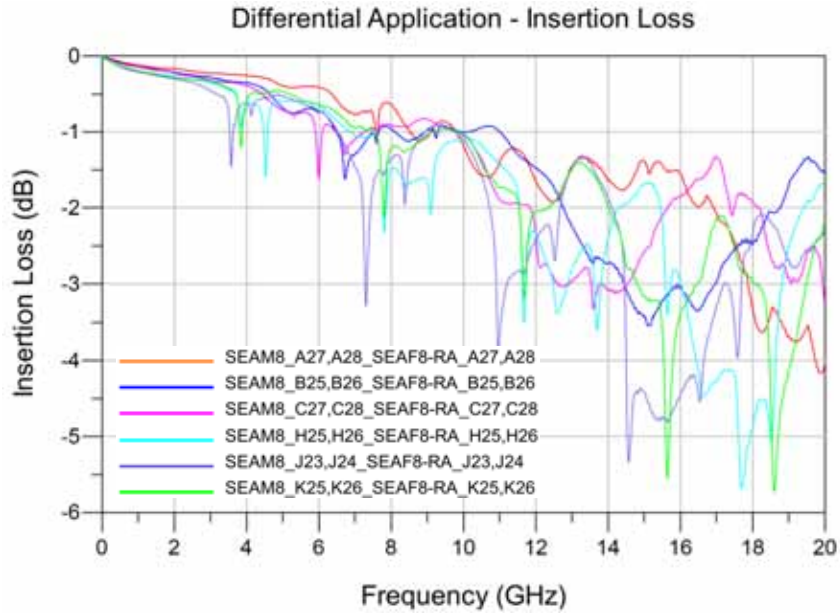
Single-Ended 2:1 S/G Pattern



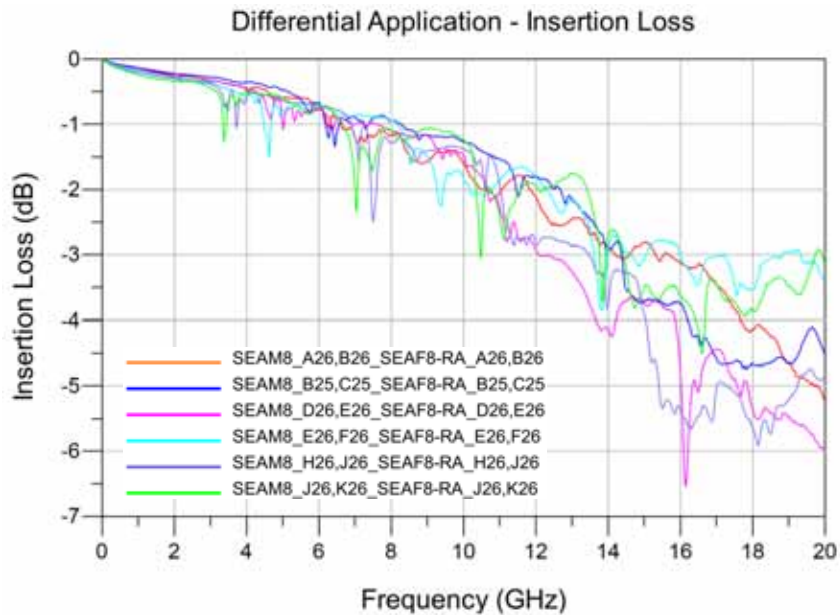
Series: SEAM8/SEAF8-RA Array Series

Description: 0.8mm x 0.8mm grid interconnect system, Vertical Male to Right Angle Female

Differential Optimal Horizontal



Differential Optimal Vertical



Series: SEAM8/SEAF8-RA Array Series

Description: 0.8mm x 0.8mm grid interconnect system, Vertical Male to Right Angle Female

Differential High Density Vertical

Differential Application - Insertion Loss

