

Series: SEAMP/SEAF-RA

Description: 1.27mm x 1.27mm grid interconnect system, Vertical (Press-Fit) to Right Angle

Frequency Domain Data Summary

Table 1 - Single-Ended 1:1 S/G Pattern Performance			
Test Parameter	Driver	Receiver	
Insertion Loss	SEAMP_161	SEAF-RA_161	3dB@ 6.0 GHz
	SEAMP_124	SEAF-RA_124	3dB@ 8.2 GHz
	SEAMP_126	SEAF-RA_126	3dB@ 6.6 GHz
	SEAMP_98	SEAF-RA_98	3dB@ 5.6 GHz
	SEAMP_80	SEAF-RA_80	3dB@ 5.7 GHz
Return Loss	SEAMP_161	SEAMP_161	>10dB to 3.8 GHz
	SEAMP_124	SEAMP_124	>10dB to 4.1 GHz
	SEAMP_126	SEAMP_126	>10dB to 3.3 GHz
	SEAMP_98	SEAMP_98	>10dB to 5.6 GHz
	SEAMP_80	SEAMP_80	>10dB to 3.8 GHz
Near-End Crosstalk	SEAMP_161	SEAMP_163	<-20dB to 20.0 GHz
	SEAMP_163	SEAMP_183	<-20dB to 20.0 GHz
	SEAMP_124	SEAMP_126	<-20dB to 20.0 GHz
	SEAMP_78	SEAMP_98	<-20dB to 20.0 GHz
	SEAMP_78	SEAMP_80	<-20dB to 5.6 GHz
Far-End Crosstalk	SEAMP_161	SEAF-RA_163	<-20dB to 20.0 GHz
	SEAMP_163	SEAF-RA_183	<-20dB to 20.0 GHz
	SEAMP_124	SEAF-RA_126	<-20dB to 8.3 GHz
	SEAMP_78	SEAF-RA_98	<-20dB to 14.1GHz
	SEAMP_78	SEAF-RA_80	<-20dB to 5.5 GHz

Series: SEAMP/SEAF-RA

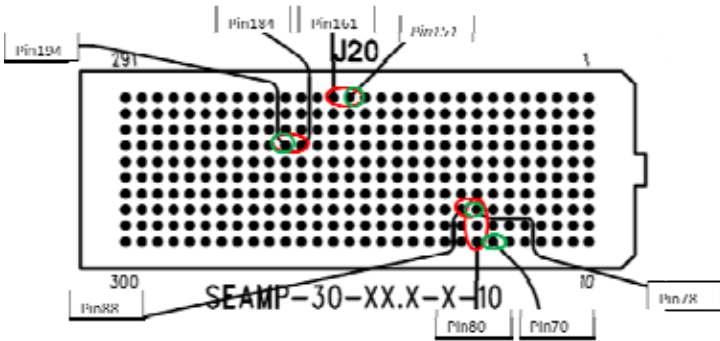
Description: 1.27mm x 1.27mm grid interconnect system, Vertical (Press-Fit) to Right Angle

Table 2 - Single-Ended 2:1 S/G Pattern Performance			
Test Parameter	Driver	Receiver	
Insertion Loss	SEAMP_151	SEAF-RA_151	3dB@ 5.9 GHz
	SEAMP_194	SEAF-RA_194	3dB@ 10.9 GHz
	SEAMP_166	SEAF-RA_166	3dB@ 9.3 GHz
	SEAMP_78	SEAF-RA_78	3dB@ 5.6 GHz
	SEAMP_70	SEAF-RA_70	3dB@ 8.1 GHz
Return Loss	SEAMP_151	SEAMP_151	>10dB to 3.8 GHz
	SEAMP_194	SEAMP_194	>10dB to 3.8 GHz
	SEAMP_166	SEAMP_166	>10dB to 5.5 GHz
	SEAMP_78	SEAMP_78	>10dB to 5.6 GHz
	SEAMP_70	SEAMP_70	>10dB to 3.8 GHz
Near-End Crosstalk	SEAMP_151	SEAMP_161	<-20dB to 0.7 GHz
	SEAMP_184	SEAMP_194	<-20dB to 0.6 GHz
	SEAMP_155	SEAMP_156	<-20dB to 0.7 GHz
	SEAMP_78	SEAMP_88	<-20dB to 0.5 GHz
	SEAMP_78	SEAMP_80	<-20dB to 5.6 GHz
Far-End Crosstalk	SEAMP_151	SEAF-RA_161	<-20dB to 5.7 GHz
	SEAMP_184	SEAF-RA_194	<-20dB to 7.9 GHz
	SEAMP_155	SEAF-RA_156	<-20dB to 3.3 GHz
	SEAMP_78	SEAF-RA_88	<-20dB to 5.5 GHz
	SEAMP_78	SEAF-RA_80	<-20dB to 2.8 GHz

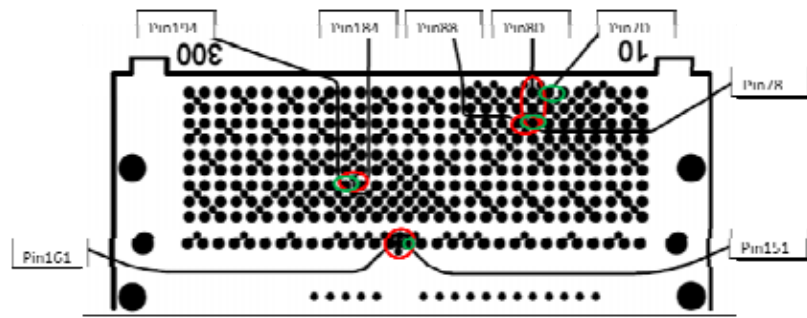
Series: SEAMP/SEAF-RA

Description: 1.27mm x 1.27mm grid interconnect system, Vertical (Press-Fit) to Right Angle

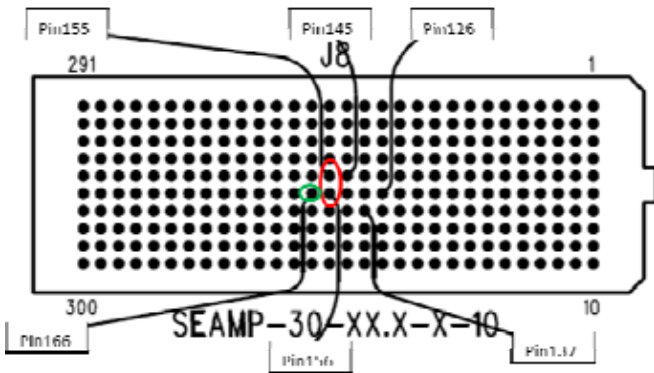
Single-Ended 2:1 S/G Pattern Pin Map



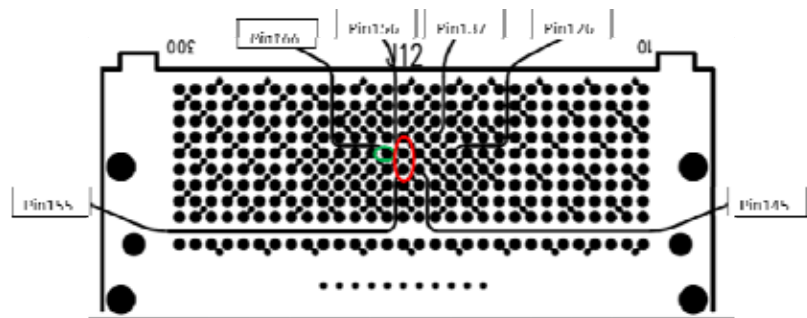
SEAMP



SEAF_RA



SEAMP



SEAF_RA

- Insertion Loss & Return Loss
- Crosstalk

Series: SEAMP/SEAF-RA

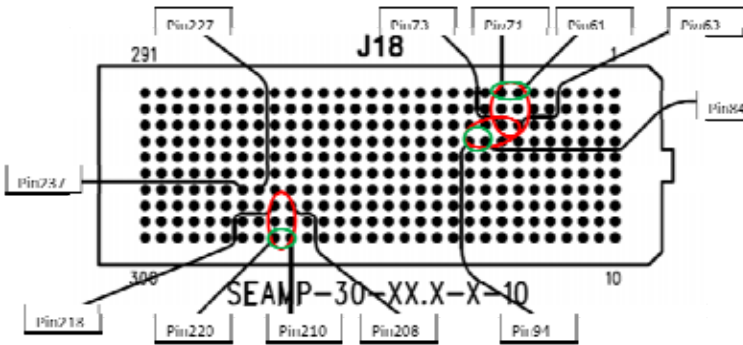
Description: 1.27mm x 1.27mm grid interconnect system, Vertical (Press-Fit) to Right Angle

Table 3 - Differential Optimal Horizontal Performance			
Test Parameter	Driver	Receiver	
Insertion Loss	SEAMP_61,71	SEAF-RA_61,71	3dB@ 10.9 GHz
	SEAMP_84,94	SEAF-RA_84,94	3dB@ 8.2 GHz
	SEAMP_127,137	SEAF-RA_127,137	3dB@ 6.1 GHz
	SEAMP_148,158	SEAF-RA_148,158	3dB@ 5.7 GHz
	SEAMP_210, 220	SEAF-RA_210,220	3dB@ 5.7 GHz
Return Loss	SEAMP_61,71	SEAMP_61,71	>10dB to 6.1 GHz
	SEAMP_84,94	SEAMP_84,94	>10dB to 5.2 GHz
	SEAMP_127,137	SEAMP_127,137	>10dB to 5.1 GHz
	SEAMP_148,158	SEAMP_148,158	>10dB to 5.0 GHz
	SEAMP_210, 220	SEAMP_210, 220	>10dB to 5.6 GHz
Near-End Crosstalk	SEAMP_61,71	SEAMP_63,73	<-20dB to 20 GHz
	SEAMP_63,73	SEAMP_84,94	<-20dB to 20 GHz
	SEAMP_106,116	SEAMP_146,156	<-20dB to 20 GHz
	SEAMP_106,116	SEAMP_127,137	<-20dB to 20 GHz
	SEAMP_127, 137	SEAMP_148, 158	<-20dB to 20 GHz
	SEAMP_208, 218	SEAMP_210, 220	<-20dB to 5.7 GHz
Far-End Crosstalk	SEAMP_61,71	SEAF-RA_63, 73	<-20dB to 20 GHz
	SEAMP_63,73	SEAF-RA_84,94	<-20dB to 20 GHz
	SEAMP_106,116	SEAF-RA_146,156	<-20dB to 20 GHz
	SEAMP_106,116	SEAF-RA_127,137	<-20dB to 20 GHz
	SEAMP_127, 137	SEAF-RA_148,158	<-20dB to 20 GHz
	SEAMP_208, 218	SEAF-RA_210,220	<-20dB to 5.6 GHz

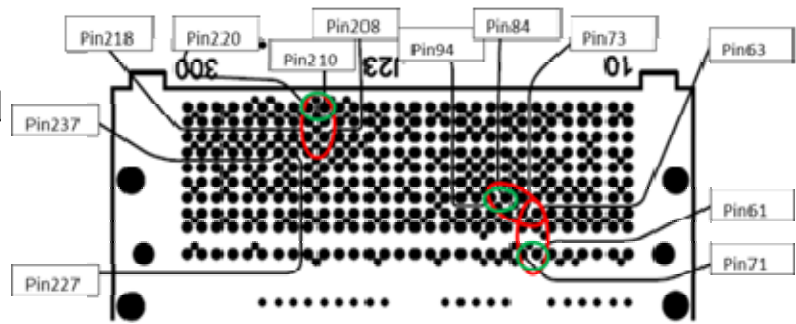
Series: SEAMP/SEAF-RA

Description: 1.27mm x 1.27mm grid interconnect system, Vertical (Press-Fit) to Right Angle

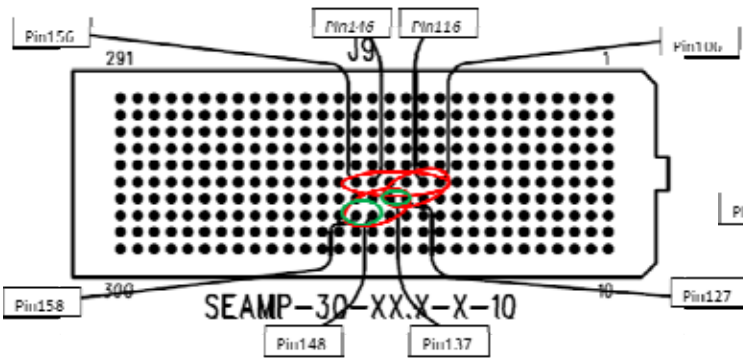
Differential Optimal Horizontal Pin Map



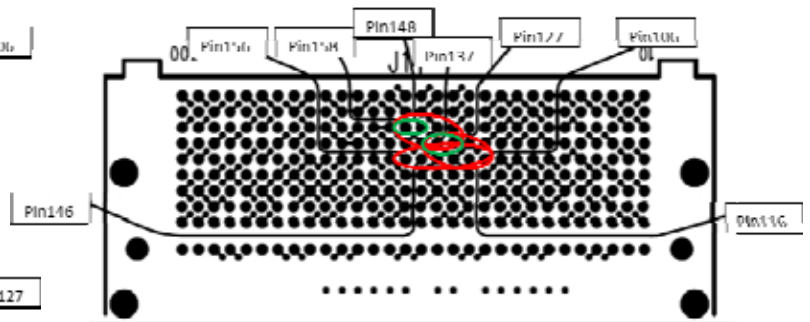
SEAMP



SEAF_RA



SEAMP



SEAF_RA

- Insertion Loss & Return Loss
- Crosstalk

Series: SEAMP/SEAF-RA

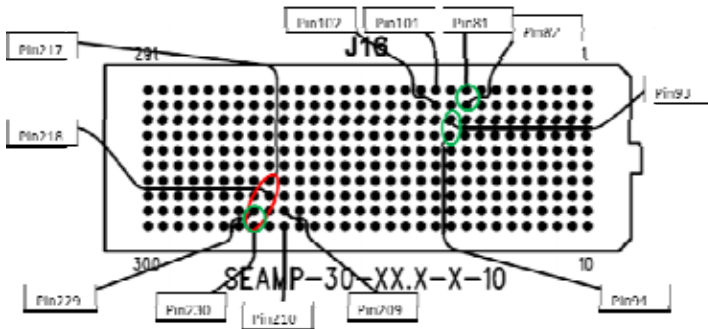
Description: 1.27mm x 1.27mm grid interconnect system, Vertical (Press-Fit) to Right Angle

Table 4 - Differential Optimal Vertical Performance			
Test Parameter	Driver	Receiver	
Insertion Loss	SEAMP_81,82	SEAF-RA_81,82	3dB@ 8.5 GHz
	SEAMP_93,94	SEAF-RA_93,94	3dB@ 8.3 GHz
	SEAMP_165,166	SEAF-RA_165,166	3dB@ 8.3 GHz
	SEAMP_157,158	SEAF-RA_157,158	3dB@ 8.3 GHz
	SEAMP_229, 230	SEAF-RA_229,230	3dB@ 9.0 GHz
Return Loss	SEAMP_81,82	SEAMP_81,82	>10dB to 5.6 GHz
	SEAMP_93,94	SEAMP_93,94	>10dB to 5.0 GHz
	SEAMP_165,166	SEAMP_165,166	>10dB to 4.8 GHz
	SEAMP_157,158	SEAMP_157,158	>10dB to 5.6 GHz
	SEAMP_229, 230	SEAMP_229, 230	>10dB to 6.3 GHz
Near-End Crosstalk	SEAMP_145, 146	SEAMP_165, 166	<-20dB to 20 GHz
	SEAMP_145, 146	SEAMP_157, 158	<-20dB to 20 GHz
	SEAMP_165,166	SEAMP_169, 170	<-20dB to 20 GHz
	SEAMP_217,218	SEAMP_229, 230	<-20dB to 20 GHz
Far-End Crosstalk	SEAMP_145, 146	SEAF-RA_165, 166	<-20dB to 20 GHz
	SEAMP_145, 146	SEAF-RA_157, 158	<-20dB to 20 GHz
	SEAMP_165,166	SEAF-RA_169, 170	<-20dB to 20 GHz
	SEAMP_217,218	SEAF-RA_229, 230	<-20dB to 20 GHz

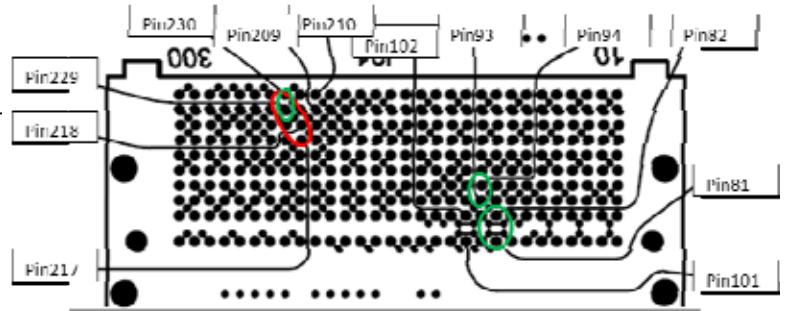
Series: SEAMP/SEAF-RA

Description: 1.27mm x 1.27mm grid interconnect system, Vertical (Press-Fit) to Right Angle

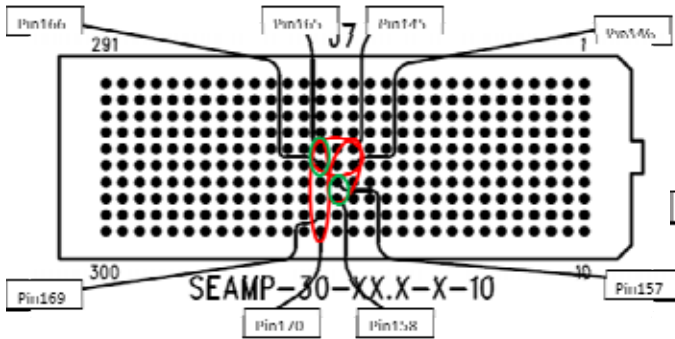
Differential Optimal Vertical Pin Map



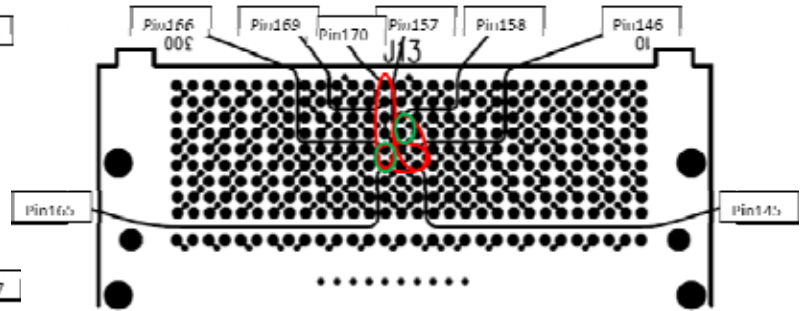
SEAMP



SEAF_RA



SEAMP



SEAF_RA

- Insertion Loss & Return Loss
- Crosstalk

Series: SEAMP/SEAF-RA

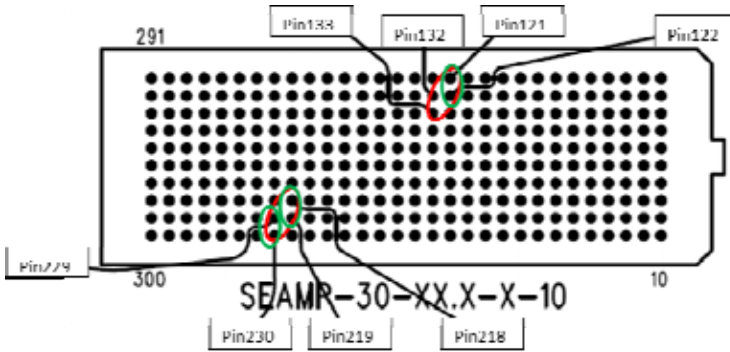
Description: 1.27mm x 1.27mm grid interconnect system, Vertical (Press-Fit) to Right Angle

Table 5 - Differential High Density Vertical Performance			
Test Parameter	Driver	Receiver	
Insertion Loss	SEAMP_121,122	SEAF-RA_121,122	3dB@ 7.2 GHz
	SEAMP_134,135	SEAF-RA_134,135	3dB@ 7.2 GHz
	SEAMP_157,158	SEAF-RA_157,158	3dB@ 8.3 GHz
	SEAMP_218, 219	SEAF-RA_218, 219	3dB@ 8.0 GHz
	SEAMP_229, 230	SEAF-RA_229,230	3dB@ 9.1 GHz
Return Loss	SEAMP_121,122	SEAMP_121,122	>10dB to 6.5 GHz
	SEAMP_134,135	SEAMP_134,135	>10dB to 6.8 GHz
	SEAMP_157,158	SEAMP_157,158	>10dB to 3.7 GHz
	SEAMP_218, 219	SEAMP_218, 219	>10dB to 6.6 GHz
	SEAMP_229, 230	SEAMP_229, 230	>10dB to 6.7 GHz
Near-End Crosstalk	SEAMP_121,122	SEAMP_132,133	<-20dB to 19.7 GHz
	SEAMP_134,135	SEAMP_154,155	<-20dB to 20 GHz
	SEAMP_134,135	SEAMP_145,146	<-20dB to 20 GHz
	SEAMP_154,155	SEAMP_157,158	<-20dB to 20 GHz
	SEAMP_218, 219	SEAMP_229, 230	<-20dB to 20 GHz
Far-End Crosstalk	SEAMP_121,122	SEAF-RA_132, 133	<-20dB to 18.2 GHz
	SEAMP_134,135	SEAF-RA_154,155	<-20dB to 20 GHz
	SEAMP_134,135	SEAF-RA_145,146	<-20dB to 14.2 GHz
	SEAMP_154,155	SEAF-RA_157,158	<-20dB to 20 GHz
	SEAMP_218, 219	SEAF-RA_229, 230	<-20dB to 20 GHz

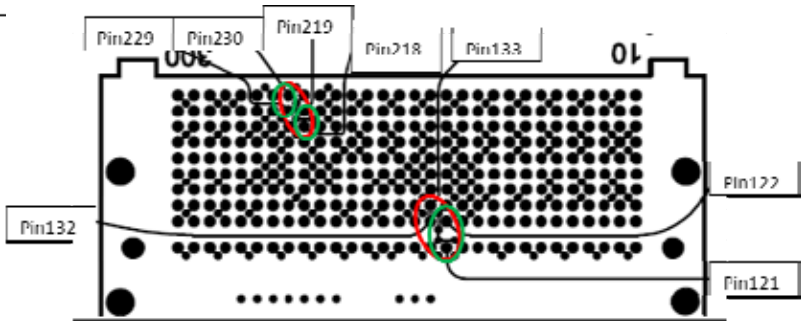
Series: SEAMP/SEAF-RA

Description: 1.27mm x 1.27mm grid interconnect system, Vertical (Press-Fit) to Right Angle

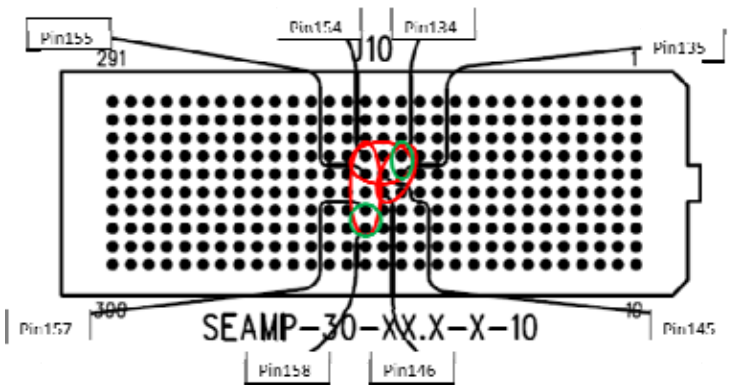
Differential High Density Vertical Pin Map



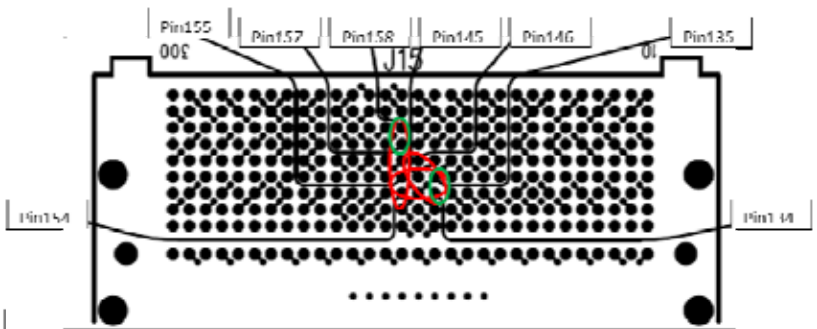
SEAMP



SEAF_RA



SEAMP



SEAF_RA

- Insertion Loss & Return Loss
- Crosstalk

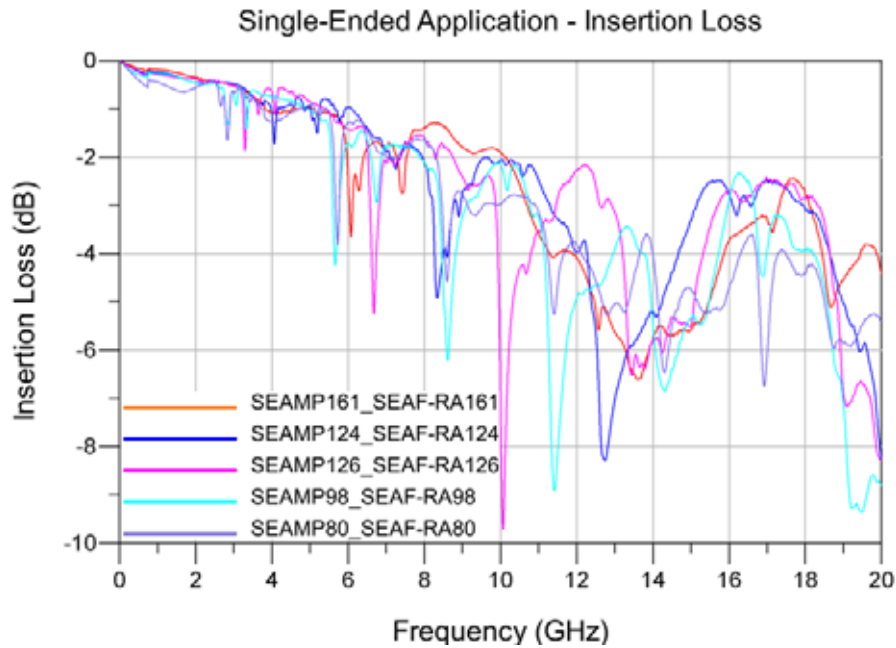
Series: SEAMP/SEAF-RA

Description: 1.27mm x 1.27mm grid interconnect system, Vertical (Press-Fit) to Right Angle

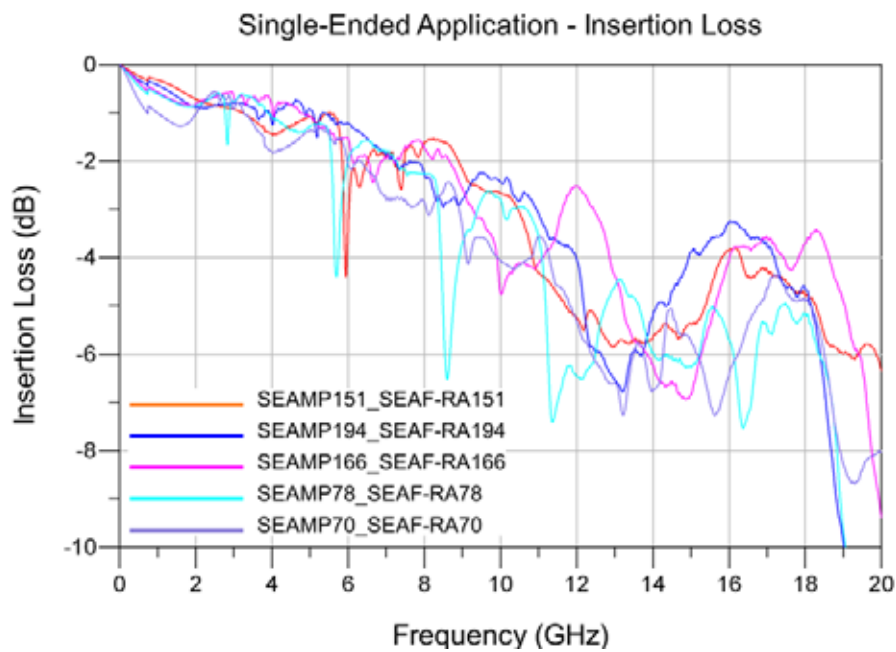
Bandwidth Charts – Single-Ended & Differential Insertion Loss

SEAMP/SEAF-RA Array Series

Single-Ended 1:1 S/G Pattern



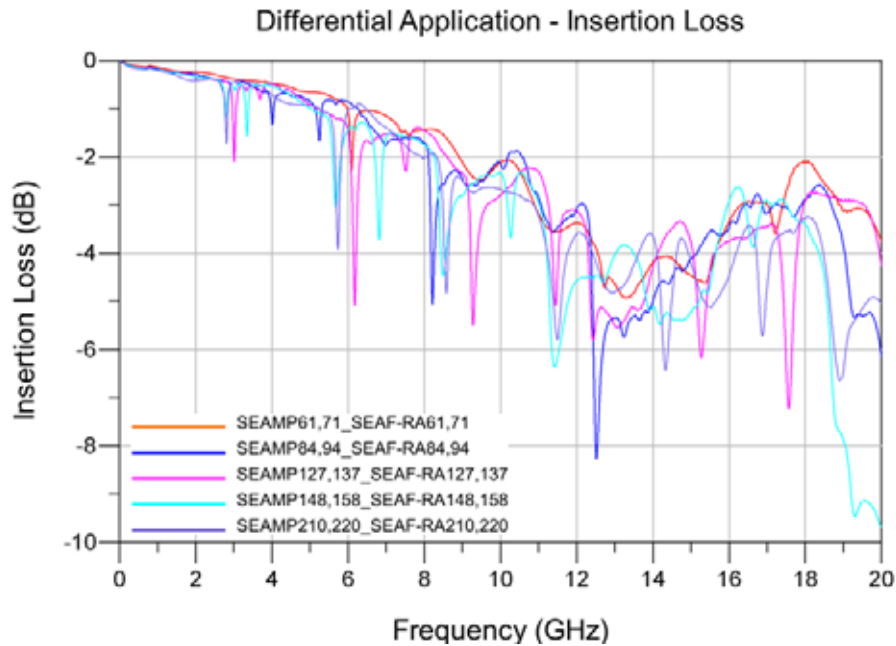
Single-Ended 2:1 S/G Pattern



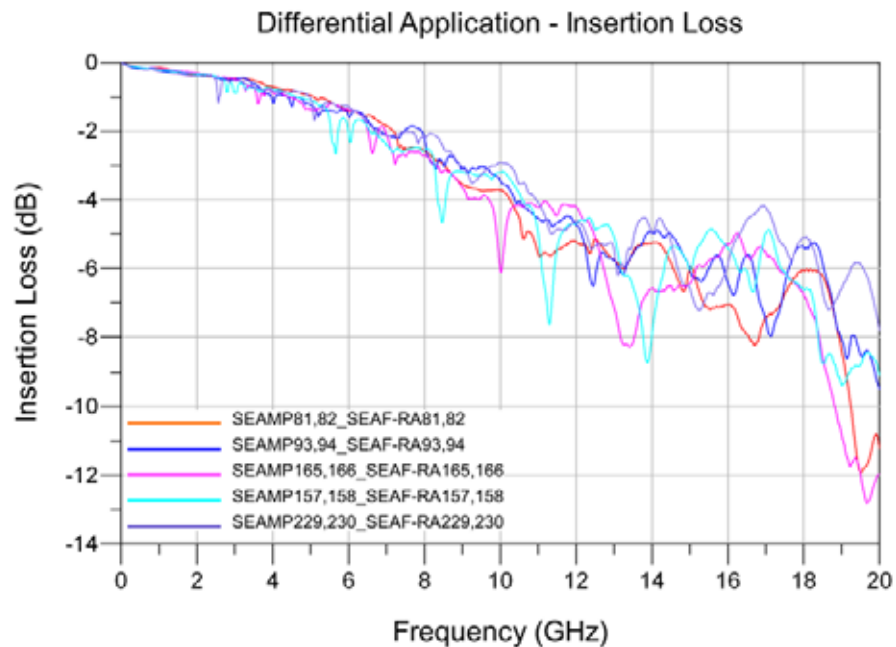
Series: SEAMP/SEAF-RA

Description: 1.27mm x 1.27mm grid interconnect system, Vertical (Press-Fit) to Right Angle

Differential Optimal Horizontal



Differential Optimal Vertical



Series: SEAMP/SEAF-RA

Description: 1.27mm x 1.27mm grid interconnect system, Vertical (Press-Fit) to Right Angle

Differential High Density Vertical

