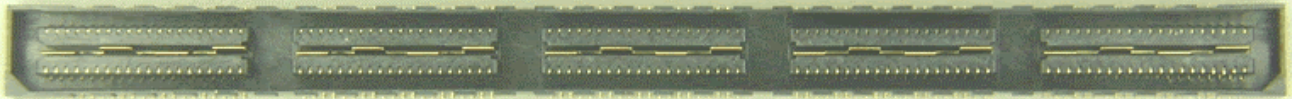
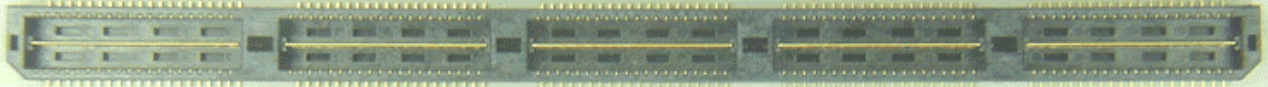




Project Number: NA		Tracking Code: 0202--0592	
Requested by: Eric Schrimper		Date: 1/11/02	Product Rev: NA
Part #: QTE/QSE-100-01-L-D-A	Lot #: NA	Tech: T. Cook	Eng: J. Tozier
Part description: 0.8mm Centerline High Speed Connector			Qty to test: 20
Test Start: 1/30/02	Test Completed: 2/27/02		



**QSE-100-01-L-D-A**



**QTE-100-01-L-D-A**

**Effects upon Mating/Unmating, IR/DWV, & Durability Due to Lubrication Report**

**PART DESCRIPTION**

**QTE/QSE-100-01-L-D-A**





Project Number: NA		Tracking Code: 0202--0592	
Requested by: Eric Schrimper		Date: 1/11/02	Product Rev: NA
Part #: QTE/QSE-100-01-L-D-A	Lot #: NA	Tech: T. Cook	Eng: J. Tozier
Part description: 0.8mm Centerline High Speed Connector			Qty to test: 20
Test Start: 1/30/02	Test Completed: 2/27/02		

### **CERTIFICATION**

All instruments and measuring equipment were calibrated to National Institute for Standards and Technology (NIST) traceable standards according to ISO 10012-1 and ANSI/NCSL 2540-1, as applicable.

All contents contained herein are the property of Samtec. No portion of this report, in part or in full shall be reproduced without prior written approval of Samtec.



Project Number: NA		Tracking Code: 0202--0592	
Requested by: Eric Schrimper		Date: 1/11/02	Product Rev: NA
Part #: QTE/QSE-100-01-L-D-A	Lot #: NA	Tech: T. Cook	Eng: J. Tozier
Part description: 0.8mm Centerline High Speed Connector			Qty to test: 20
Test Start: 1/30/02	Test Completed: 2/27/02		

## SCOPE

To perform the following tests: DVT Modified

## APPLICABLE DOCUMENTS

Standards: EIA Publication 364

## TEST SAMPLES AND PREPARATION

- 1) All materials were manufactured in accordance with the applicable product specification.
- 2) All test samples were identified and encoded to maintain traceability throughout the test sequences.
- 3) After soldering, the parts to be used for LLCRC testing were cleaned according to TLWI-0001:
  - a) Sample test boards are to be ultrasonically cleaned after test lead attachment, preparation and/or soldering using the following process.
  - b) Immerse the sample test boards into the Branson 3510 cleaner which contains Kyzen Ionox HC1 (or equivalent) cleaning solution with the following conditions:
    - i) Temperature: 55 ° C +/- 5 ° C
    - ii) Frequency: 40 KHz
    - iii) Immersion Time: 5 to 10 Minutes
  - c) Sample test boards are then slowly removed and placed into the Branson 3510 cleaner which contains deionized water with the following conditions:
    - i) Temperature: 55 ° C +/- 5 ° C
    - ii) Frequency: 40 KHz
    - iii) Immersion Time: 5 to 10 Minutes
  - d) Sample test boards are then removed and placed in a beaker, on a hot plate with a magnetic stirrer containing deionized water warmed to 55 ° C +/- 5 ° C for 1/2 to 1 minute (Use 55 ° C as target)
  - e) Upon removal, the sample test boards are then rinsed for 1/2 to 1 minute in room temperature free flowing deionized water.
  - f) After the final rinse, the sample test boards are to be dried in an air-circulating oven for 10 to 15 minutes at 50 ° C +/- 5 ° C (Use 50 ° C as target)
  - g) Sample test boards are then allowed to set and recover to room ambient condition prior to testing.
- 4) Parts not intended to be tested for LLCRC are visually inspected and cleaned if necessary.
- 5) Any additional preparation will be noted in the individual test procedures.
- 6) Cleaning Procedures are standardized in TLOP 0001, *Ultrasonic Cleaning Procedures*.



Project Number: NA		Tracking Code: 0202--0592	
Requested by: Eric Schrimper		Date: 1/11/02	Product Rev: NA
Part #: QTE/QSE-100-01-L-D-A	Lot #: NA	Tech: T. Cook	Eng: J. Tozier
Part description: 0.8mm Centerline High Speed Connector			Qty to test: 20
Test Start: 1/30/02	Test Completed: 2/27/02		

**THERMAL AGING:**

- 1) EIA-364-17, *Temperature Life with or without Electrical Load Test Procedure for Electrical Connectors.*
  - a) Test Condition 4 at 105 ° C.
  - b) Test Time Condition B for 250 hours.
- 2) Connectors are mated.

**CYCLIC HUMIDITY:**

- 1) Reference document: EIA-364-31, *Humidity Test Procedure for Electrical Connectors.*
  - a) Test Condition B, 240 Hours.
  - b) Method III, +25 ° C to + 65 ° C, 90% to 95% Relative Humidity excluding sub-cycles 7a and 7b.



Project Number: NA		Tracking Code: 0202--0592					
Requested by: Eric Schrimper			Date: 1/11/02		Product Rev: NA		
Part #: QTE/QSE-100-01-L-D-A		Lot #: NA		Tech: T. Cook		Eng: J. Tozier	
Part description: 0.8mm Centerline High Speed Connector						Qty to test: 20	
Test Start: 1/30/02		Test Completed: 2/27/02					

## FLOWCHART S

TEST STEP	GROUP A 2 Boards Ambient NO LUBE	GROUP AL 2 Boards Ambient LUBE	GROUP B1 2 Boards Ambient NO LUBE	GROUP B1L 2 Boards Ambient LUBE	GROUP B2 2 Boards Thermal Age NO LUBE	GROUP B2L 2 Boards Thermal Age LUBE	GROUP B3 2 Boards Humidity NO LUBE	GROUP B3L 2 Boards Humidity LUBE
01	IR	IR	Breakdown/ DWV/WV	Breakdown/ DWV/WV	Thermal Age	Thermal Age	Humidity	Humidity
02	Thermal Age	Thermal Age			Breakdown/ DWV/WV	Breakdown/ DWV/WV	Breakdown/ DWV/WV	Breakdown/ DWV/WV
03	IR	IR						
04	Humidity	Humidity						
05	IR	IR						

### Lubrication is Nyetact 571H-10-UV, Lot #KK990517B

Nye Lubricants Inc., New Bedford, MA 02742 (508) 996-6721

IR = EIA-364-21. Greater than 1000 Meg Ohms

DWV = EIA-364-20 at 900 VAC, 500 V/Sec rate. Apply 60 seconds

Thermal Aging = EIA-364-17, 105 deg C...

Test Time Condition 'B' is for 250 Hours

Humidity = EIA-364-31, Method III (+25 deg C to +65 deg C @ 90%RH to 98% RH)...

Test Condition 'B' for 240 Hours

delete steps 7a and 7b



Project Number: NA		Tracking Code: 0202--0592	
Requested by: Eric Schrimper		Date: 1/11/02	Product Rev: NA
Part #: QTE/QSE-100-01-L-D-A	Lot #: NA	Tech: T. Cook	Eng: J. Tozier
Part description: 0.8mm Centerline High Speed Connector			Qty to test: 20
Test Start: 1/30/02	Test Completed: 2/27/02		

TEST STEP	GROUP A1 200 Points 100 Cycles NO LUBE	GROUP A1L 200 Points 100 Cycles LUBE
01	LLCR-1	LLCR-1
02	Mating/Unmating Forces	Mating/Unmating Forces
03	100 Cycles durability	100 Cycles durability
04	Mating/Unmating Forces	Mating/Unmating Forces
05	LLCR-2	LLCR-2
06	Thermal Age	Thermal Age
07	LLCR-3	LLCR-3
08	Cyclic Humidity	Cyclic Humidity
09	LLCR-4	LLCR-4

**Lubrication is Nyetact 571H-10-UV, Lot #KK990517B**

Nye Lubricants Inc., New Bedford, MA 02742 (508) 996-6721

LLCR = EIA-364-23, LLCR

use Keithley 580 in the dry circuit mode, 10 mA Max

Mating/Un-Mating Forces = EIA-364-13

Thermal Aging = EIA-364-17, 105 deg C...

Test Time Condition 'B' is for 250 Hours

Humidity =EIA-364-31, Method III (+25 deg C to +65 deg C @ 90%RH to 98% RH)...

Test Condition 'B' for 240 Hours

delete steps 7a and 7b



Project Number: NA		Tracking Code: 0202--0592	
Requested by: Eric Schrimper		Date: 1/11/02	Product Rev: NA
Part #: QTE/QSE-100-01-L-D-A	Lot #: NA	Tech: T. Cook	Eng: J. Tozier
Part description: 0.8mm Centerline High Speed Connector			Qty to test: 20
Test Start: 1/30/02	Test Completed: 2/27/02		

**SUPPLEMENTAL TEST FLOWCHART**

TEST STEP	Group A1 <b>200 test points</b>	Group A1L <b>200 test points</b>
	NO LUBE	LUBRICATED
01	LLCR-1	LLCR-1
02	<b>250 CYCLES</b>	<b>250 CYCLES</b>
03	LLCR-2	LLCR-2
04	<b>ENGR EVAL</b>	<b>ENGR EVAL</b>
05	<b>500 CYCLES</b>	<b>500 CYCLES</b>
06	LLCR-3	LLCR-3
07	<b>ENGR EVAL</b>	<b>ENGR EVAL</b>
08	<b>750 CYCLES</b>	<b>750 CYCLES</b>
09	LLCR-4	LLCR-4
10	<b>ENGR EVAL</b>	<b>ENGR EVAL</b>
11	<b>1000 CYCLES</b>	<b>1000 CYCLES</b>
12	LLCR-5	LLCR-5
13	<b>ENGR EVAL</b>	<b>ENGR EVAL</b>

ENGR EVAL= Engineering to evaluate visuals before continuing

Lubrication is Nyetact 571H-10-UV, Lot #KK990517B

Nye Lubricants Inc., New Bedford, MA 02742 (508) 996-6721

LLCR = EIA-364-23, LLCR

use Keithley 580 in the dry circuit mode, 10 mA Max



Project Number: NA		Tracking Code: 0202--0592	
Requested by: Eric Schrimper		Date: 1/11/02	Product Rev: NA
Part #: QTE/QSE-100-01-L-D-A	Lot #: NA	Tech: T. Cook	Eng: J. Tozier
Part description: 0.8mm Centerline High Speed Connector			Qty to test: 20
Test Start: 1/30/02	Test Completed: 2/27/02		

### MEASURED ATTRIBUTE:

#### MATING/UNMATING

- 1) Reference document: EIA-364-13, *Mating and Unmating Forces Test Procedure for Electrical Connectors*.
- 2) The full insertion position was to within 0.003” to 0.004” of the plug bottoming out in the receptacle to prevent damage to the system under test.
- 3) One of the mating parts is secured to a floating X-Y table to prevent damage during cycling.
- 4) Testing is standardized according to TLWI 0012, *Mating-Unmating Force Measurements*.

#### MATING/UNMATING – non-Lubricated

First Cycle

	Mating		Ummating	
	Force (Oz)	Force (Lbs)	Force (Oz)	Force (Lbs)
Minimum	144.6	9.0	127.4	8.0
Maximum	203.5	12.7	220.2	13.8
<b>Average</b>	<b>175.8</b>	<b>11.0</b>	<b>155.4</b>	<b>9.7</b>

After 100 Cycles

	Mating		Ummating	
	Force (Oz)	Force (Lbs)	Force (Oz)	Force (Lbs)
Minimum	182.4	11.4	145.0	9.1
Maximum	200.0	12.5	182.4	11.4
<b>Average</b>	<b>191.6</b>	<b>12.0</b>	<b>159.2</b>	<b>10.0</b>

#### MATING/UNMATING – Lubricated

First Cycle

	Mating		Ummating	
	Force (Oz)	Force (Lbs)	Force (Oz)	Force (Lbs)
Minimum	180.5	11.3	164.5	10.3
Maximum	205.8	12.9	201.9	12.6
<b>Average</b>	<b>189.3</b>	<b>11.8</b>	<b>179.4</b>	<b>11.2</b>

After 100 Cycles

	Mating		Ummating	
	Force (Oz)	Force (Lbs)	Force (Oz)	Force (Lbs)
Minimum	160.3	10.0	139.2	8.7
Maximum	219.2	13.7	153.6	9.6
<b>Average</b>	<b>179.1</b>	<b>11.2</b>	<b>146.5</b>	<b>9.2</b>



Project Number: NA		Tracking Code: 0202--0592	
Requested by: Eric Schrimper		Date: 1/11/02	Product Rev: NA
Part #: QTE/QSE-100-01-L-D-A	Lot #: NA	Tech: T. Cook	Eng: J. Tozier
Part description: 0.8mm Centerline High Speed Connector			Qty to test: 20
Test Start: 1/30/02	Test Completed: 2/27/02		

**MEASURED ATTRIBUTE:**

**INSULATION RESISTANCE (IR)**

To determine the resistance of insulation materials to leakage of current through or on the surface of these materials when a DC potential is applied.

- 1) PROCEDURE:
  - a) Reference document: EIA-364-21, *Insulation Resistance Test Procedure for Electrical Connectors*.
  - b) Test Conditions:
    - i) Between Adjacent Contacts
    - ii) Unmated
    - iii) Mounted
    - iv) Electrification Time 2.0 minutes
    - v) Test Voltage (VDC) corresponding to calibration settings for measuring resistances
- 2) MEASUREMENTS:
  - a) When the specified test voltage is applied (VDC), the insulation resistance shall not be less than 5000 megohms.

**INSULATION RESISTANCE (IR) – Non-Lubricated Parts**

Values in Mohms	Initial	After Thermals	After Humidity
<b>Average</b>	100000	100000	37500
<b>Min</b>	100000	100000	25000
<b>Max</b>	100000	100000	50000

**INSULATION RESISTANCE (IR) – Lubricated Parts**

Values in Mohms	Initial	After Thermals	After Humidity
<b>Average</b>	100000	100000	50000
<b>Min</b>	100000	100000	50000
<b>Max</b>	100000	100000	50000



Project Number: NA			Tracking Code: 0202--0592			
Requested by: Eric Schrimper		Date: 1/11/02		Product Rev: NA		
Part #: QTE/QSE-100-01-L-D-A		Lot #: NA	Tech: T. Cook		Eng: J. Tozier	
Part description: 0.8mm Centerline High Speed Connector					Qty to test: 20	
Test Start: 1/30/02		Test Completed: 2/27/02				

### MEASURED ATTRIBUTE:

#### DIELECTRIC WITHSTANDING VOLTAGE (DWV)

To determine if the sockets can operate at its rated voltage and withstand momentary over potentials due to switching, surges, and other similar phenomenon. Separate samples are used to evaluate the effect of environmental stresses so not to influence the readings from arcing that occurs during the measurement process.

##### 1) PROCEDURE:

- a) Reference document: EIA-364-20, *Withstanding Voltage Test Procedure for Electrical Connectors*.
- b) Test Conditions:
  - i) Between Adjacent Contacts
  - ii) Unmated **QSE Socket Side only**.
  - iii) Mounted
  - iv) Rate of Application 500 V/Sec
  - v) Test Voltage (VAC) until breakdown occurs

##### 2) MEASUREMENTS/CALCULATIONS

- a) The breakdown voltage shall be measured and recorded.
- b) The dielectric withstanding voltage shall be recorded as 75% of the minimum breakdown voltage.
- c) The working voltage shall be recorded as one-third (1/3) of the dielectric withstanding voltage. (one-fourth of the breakdown voltage)
- d)  $VDC = 1/(\sqrt{2}) \times VAC$ , or  $VAC/0.707$

#### DIELECTRIC WITHSTANDING VOLTAGE (DWV) – Non-Lubricated

Values in VAC	Initial			After Thermals			After Humidity		
	Breakdown Voltage	DWV	Working Voltage	Breakdown Voltage	DWV	Working Voltage	Breakdown Voltage	DWV	Working Voltage
<b>Average</b>	1625	NA	NA	1875	NA	NA	1700	NA	NA
<b>Min</b>	1600	1200	400	1700	1275	NA	1650	1238	NA
<b>Max</b>	1650	NA	NA	2050	NA	NA	1750	NA	NA

#### DIELECTRIC WITHSTANDING VOLTAGE (DWV) – Lubricated

Values in VAC	Initial			After Thermals			After Humidity		
	Breakdown Voltage	DWV	Working Voltage	Breakdown Voltage	DWV	Working Voltage	Breakdown Voltage	DWV	Working Voltage
<b>Average</b>	1800	NA	NA	2325	NA	NA	2025	NA	NA
<b>Min</b>	1700	1275	425	2200	1650	NA	1900	1425	NA
<b>Max</b>	1900	NA	NA	2450	NA	NA	2150	NA	NA



Project Number: NA		Tracking Code: 0202--0592	
Requested by: Eric Schrimper		Date: 1/11/02	Product Rev: NA
Part #: QTE/QSE-100-01-L-D-A	Lot #: NA	Tech: T. Cook	Eng: J. Tozier
Part description: 0.8mm Centerline High Speed Connector			Qty to test: 20
Test Start: 1/30/02	Test Completed: 2/27/02		

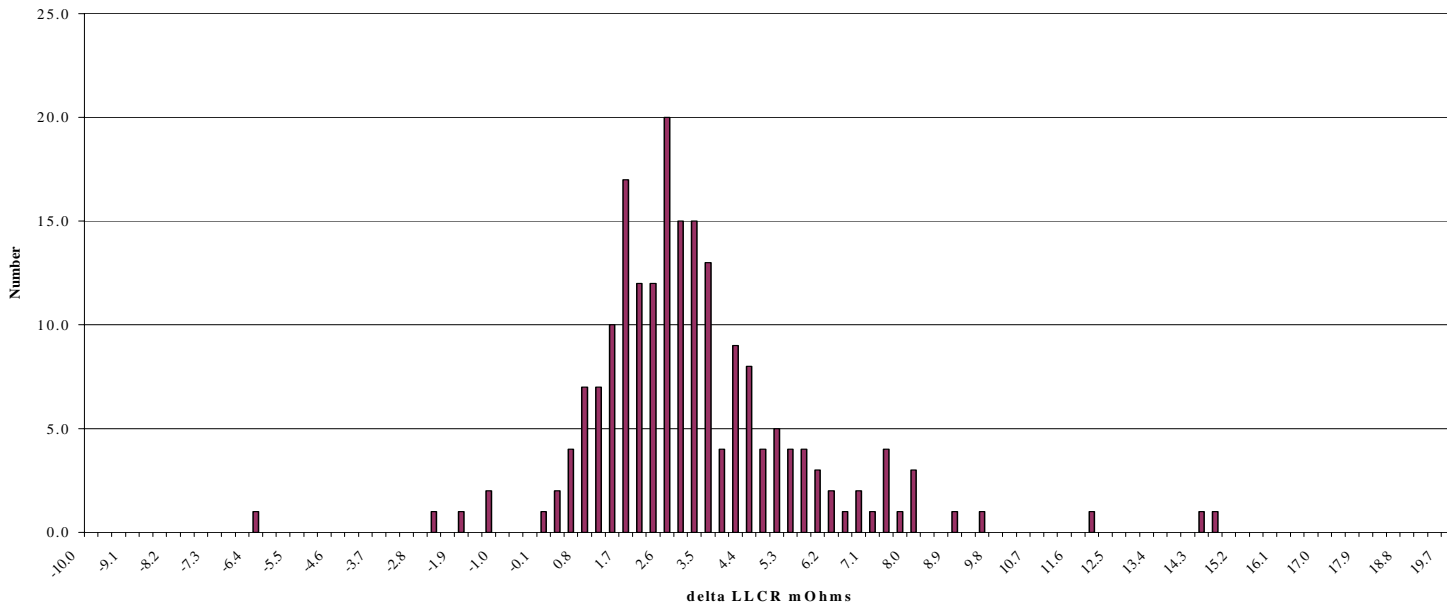
**MEASURED ATTRIBUTE:**

**LLCR – Non-Lubricated**

- 1) EIA-364-23, *Low Level Contact Resistance Test Procedure for Electrical Connectors and Sockets.*
- 2) A computer program, *LLCR 221.exe*, ensures repeatability for data acquisition.
  - a) A total of 200 points were measured.
  
- 3) Testing is standardized according to TLWI 0004, *Low Level Contact Resistance (LLCR).*

Date	Jan. 30 2002	Jan. 30 2002	Feb. 12 2002	Feb. 26 2002
Room Temp C	22	23	23	24
RH	19%	20%	21%	20%
Initials	T. Cook	T. Cook	T. Cook	Troy Cook
<b>mOhm values</b>	<b>Actual Initial</b>	<b>Delta 100 Cycles</b>	<b>Delta Thermal</b>	<b>Delta Humidity</b>
Average	22.8	-0.1	2.1	3.0
St. Dev.	1.0	1.0	1.7	2.4
Min	20.8	-6.2	-4.8	-6.6
Max	29.3	2.1	10.2	14.4
Count	200	200	200	200

Count, non-Lubricated Humidity





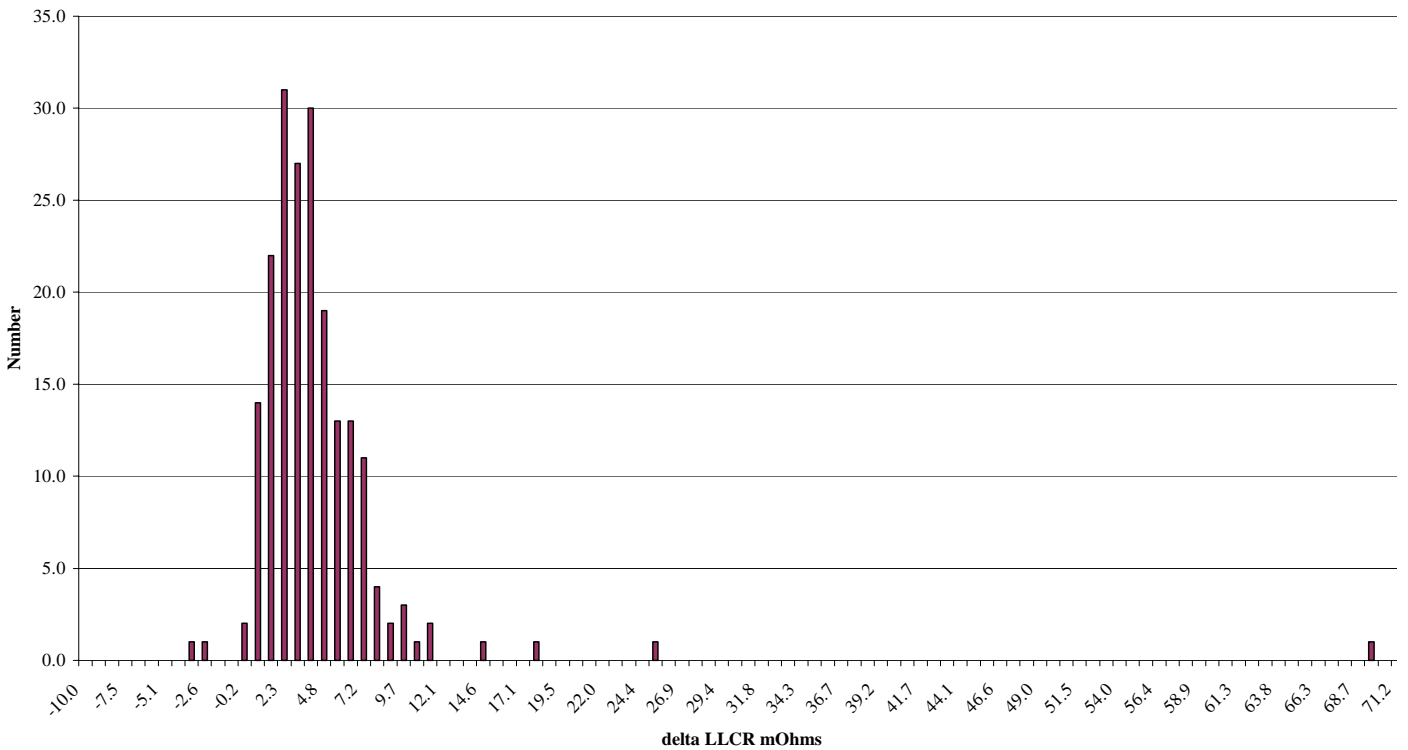
Project Number: NA		Tracking Code: 0202--0592	
Requested by: Eric Schrimper		Date: 1/11/02	Product Rev: NA
Part #: QTE/QSE-100-01-L-D-A	Lot #: NA	Tech: T. Cook	Eng: J. Tozier
Part description: 0.8mm Centerline High Speed Connector			Qty to test: 20
Test Start: 1/30/02	Test Completed: 2/27/02		

**MEASURED ATTRIBUTE:**

**LLCR – Lubricated**

Date	Jan. 30 2002	Jan. 30 2002	Feb. 12 2002	Feb. 26 2002
Room Temp C	22	23	23	24
RH	19%	20%	21%	20%
Initials	T. Cook	T. Cook	T. Cook	Troy Cook
<b>mOhm values</b>	<b>Actual Initial</b>	<b>Delta 100 Cycles</b>	<b>Delta Thermal</b>	<b>Delta Humidity</b>
Average	22.1	0.0	2.2	3.9
St. Dev.	1.0	0.9	1.8	5.5
Min	20.0	-2.6	-3.6	-3.6
Max	27.0	3.4	13.3	68.9
Count	200	200	200	200

**Count, Lubricated Humidity**

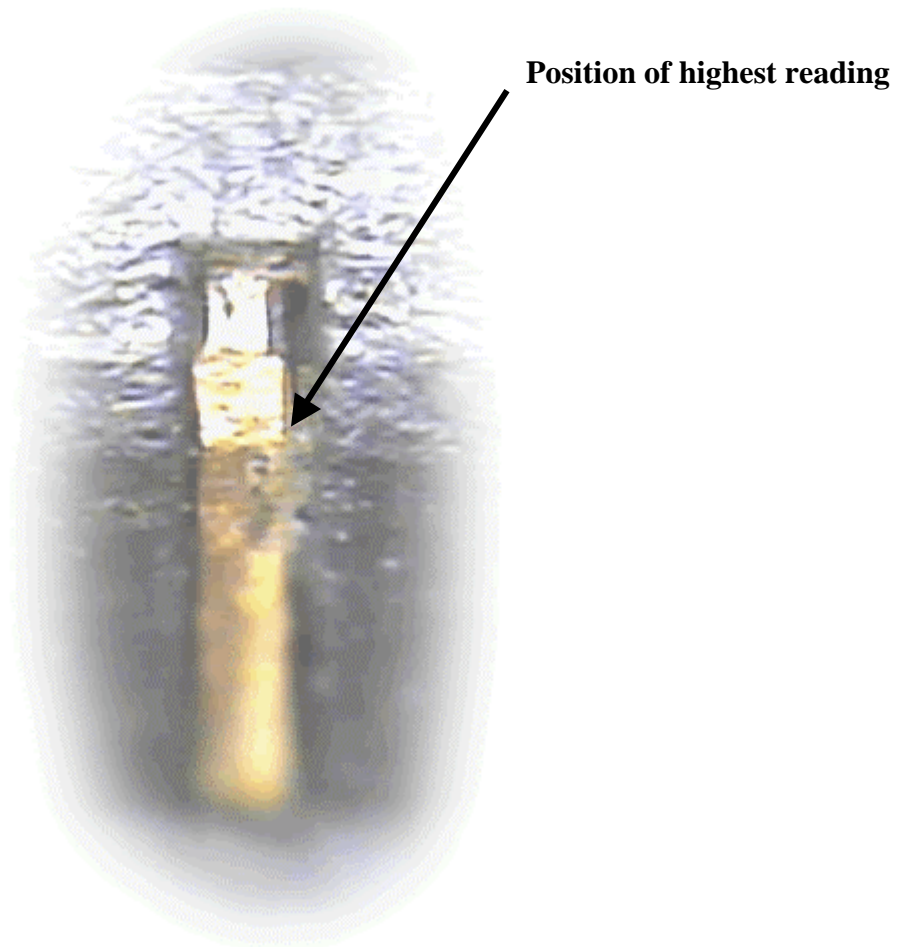




Project Number: NA		Tracking Code: 0202--0592	
Requested by: Eric Schrimper		Date: 1/11/02	Product Rev: NA
Part #: QTE/QSE-100-01-L-D-A	Lot #: NA	Tech: T. Cook	Eng: J. Tozier
Part description: 0.8mm Centerline High Speed Connector			Qty to test: 20
Test Start: 1/30/02	Test Completed: 2/27/02		

### LLCR – Lubricated- Continue

One high reading position (>69 mOhms) was visually inspected and there was a buildup of residue along side the the corresponding terminal. This organic based lubricant will pickup residue and over the life of the product, the encapsulated wear material may swell ... causing increasingly higher LLCR readings with time. There was no abnormal wear of the contact (s).



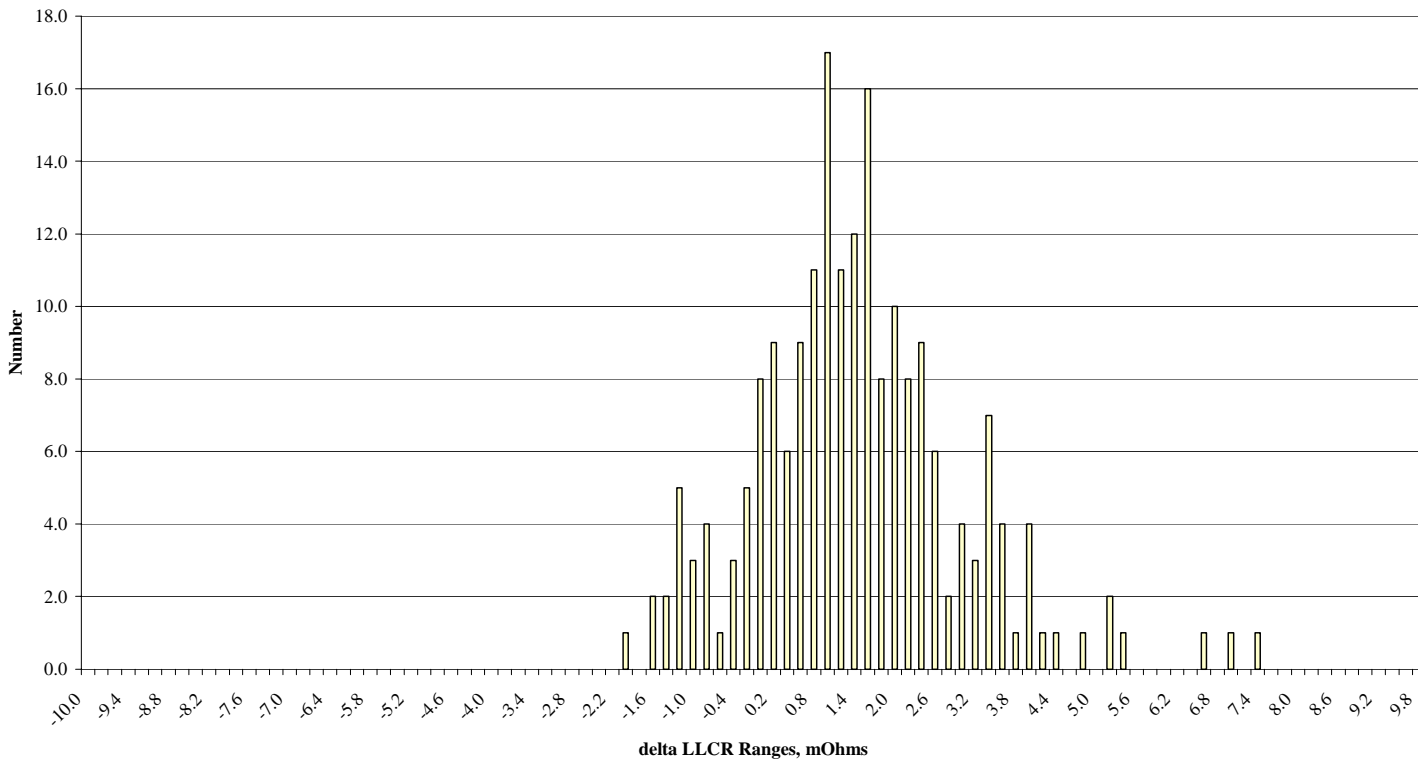


Project Number: NA		Tracking Code: 0202--0592		
Requested by: Eric Schrimper		Date: 1/11/02	Product Rev: NA	
Part #: QTE/QSE-100-01-L-D-A	Lot #: NA	Tech: T. Cook	Eng: J. Tozier	
Part description: 0.8mm Centerline High Speed Connector			Qty to test: 20	
Test Start: 1/30/02	Test Completed: 2/27/02			

**MEASURED ATTRIBUTE:  
SUPPLEMENTAL TEST, LLCR DURABILITY – non-Lubricated**

Date	Jan. 30 2002	Jan. 30 2002	Feb. 04 2002	Feb. 14 2002	Feb. 18 2002
Room Temp C	22	23	23	24	21
RH	19%	20%	21%	20%	22%
Initials	T. C.	T. C.	T. C.	T. C.	G. L.
<b>mOhm values</b>	<b>Actual Initial</b>	<b>Delta 250 Cycles</b>	<b>Delta 500 Cycles</b>	<b>Delta 750 Cycles</b>	<b>Delta 1000 Cycles</b>
Average	22.6	0.4	0.8	0.7	1.4
St. Dev.	0.9	0.9	1.2	1.2	1.6
Min	20.7	-1.8	-2.0	-1.8	-2.2
Max	25.0	2.8	6.5	5.0	7.3
Count	200	200	200	200	200

**Count, non Lubricated  
1000 Cycles**



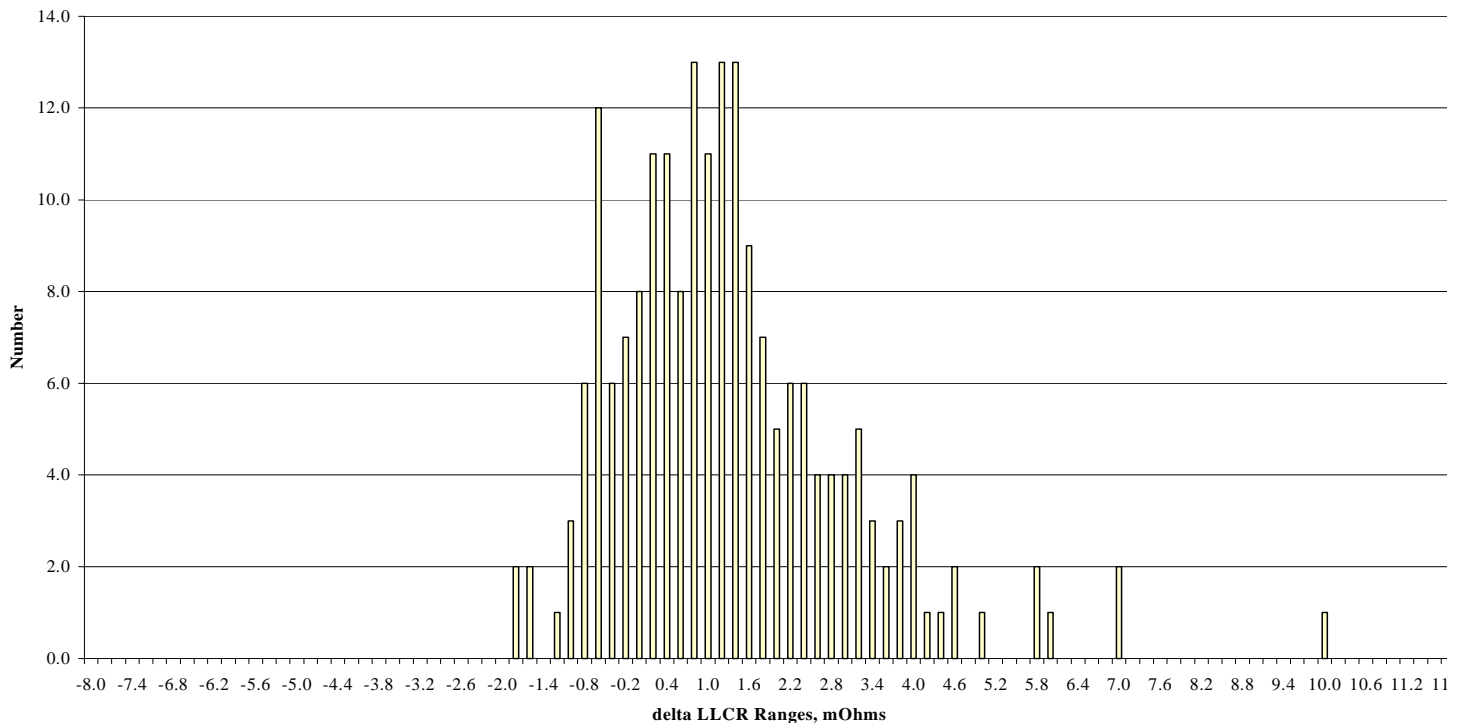


Project Number: NA		Tracking Code: 0202--0592		
Requested by: Eric Schrimper		Date: 1/11/02	Product Rev: NA	
Part #: QTE/QSE-100-01-L-D-A	Lot #: NA	Tech: T. Cook	Eng: J. Tozier	
Part description: 0.8mm Centerline High Speed Connector			Qty to test: 20	
Test Start: 1/30/02	Test Completed: 2/27/02			

**MEASURED ATTRIBUTE:  
SUPPLEMENTAL TEST, LLCR DURABILITY – Lubricated**

Date	Jan. 30 2002	Jan. 31 2002	Feb. 04 2002	Feb. 14 2002	Feb. 18 2002
Room Temp C	22	23	23	24	24
RH	19%	20%	21%	20%	20%
Initials	T. C.	T. C.	T. C.	T. C.	G. L.
<b>mOhm values</b>	<b>Actual Initial</b>	<b>Delta 250 Cycles</b>	<b>Delta 500 Cycles</b>	<b>Delta 750 Cycles</b>	<b>Delta 1000 Cycles</b>
Average	22.4	0.2	0.8	1.1	1.2
St. Dev.	0.8	0.8	1.4	1.5	1.7
Min	20.7	-1.8	-2.0	-1.5	-2.0
Max	24.8	2.5	5.9	9.0	9.8
Count	200	200	200	200	200

**Count, Lubricated  
1000 Cycles**





Project Number: NA		Tracking Code: 0202--0592	
Requested by: Eric Schrimper		Date: 1/11/02	Product Rev: NA
Part #: QTE/QSE-100-01-L-D-A	Lot #: NA	Tech: T. Cook	Eng: J. Tozier
Part description: 0.8mm Centerline High Speed Connector			Qty to test: 20
Test Start: 1/30/02	Test Completed: 2/27/02		

**DATA SECTION FOLLOWS**

**MATING/UNMATING, Non-Lubricated**

<b>Test Date:</b>	1/30/2002
<b>Operator:</b>	TC
<b>Temperature (C):</b>	21
<b>Humidity (RH):</b>	51%
<b>Equipment Code Number</b>	18
<b>Load Cell Code Number</b>	52
<b>Readout Code Number</b>	2
<b>Contact Description</b>	
<b>Contact Used In:</b>	QSE
<b>Contact Mates With:</b>	QTE

Initial

Sample#	Mating		Ummating	
	Force (Oz)	Force (Lbs)	Force (Oz)	Force (Lbs)
1	203.5	12.7	220.2	13.8
2	165.4	10.3	141.1	8.8
3	144.6	9.0	133.1	8.3
4	189.4	11.8	127.4	8.0

After 100 Cycles

Sample#	Mating		Ummating	
	Force (Oz)	Force (Lbs)	Force (Oz)	Force (Lbs)
1	193.6	12.1	182.4	11.4
2	190.4	11.9	162.9	10.2
3	182.4	11.4	146.6	9.2
4	200.0	12.5	145.0	9.1



Project Number: NA		Tracking Code: 0202--0592	
Requested by: Eric Schrimper		Date: 1/11/02	Product Rev: NA
Part #: QTE/QSE-100-01-L-D-A	Lot #: NA	Tech: T. Cook	Eng: J. Tozier
Part description: 0.8mm Centerline High Speed Connector			Qty to test: 20
Test Start: 1/30/02	Test Completed: 2/27/02		

### MATING/UNMATING, Lubricated

<b>Test Date:</b>	1/30/2002
<b>Operator:</b>	TC
<b>Temperature (C):</b>	21
<b>Humidity (RH):</b>	51%
<b>Equipment Code Number</b>	18
<b>Load Cell Code Number</b>	52
<b>Readout Code Number</b>	2
<b>Contact Description</b>	
<b>Contact Used In:</b>	QSE
<b>Contact Mates With:</b>	QTE

#### Initial

Sample#	Mating		Ummating	
	Force (Oz)	Force (Lbs)	Force (Oz)	Force (Lbs)
1	188.16	11.76	177.28	11.08
2	205.76	12.9	164.48	10.3
3	180.48	11.3	174.08	10.9
4	182.72	11.42	201.92	12.6

#### After 100 Cycles

Sample#	Mating		Ummating	
	Force (Oz)	Force (Lbs)	Force (Oz)	Force (Lbs)
1	160.32	10.02	141.76	8.86
2	166.4	10.4	151.36	9.5
3	170.56	10.7	139.2	8.7
4	219.2	13.7	153.6	9.6



Project Number: NA		Tracking Code: 0202--0592	
Requested by: Eric Schrimper		Date: 1/11/02	Product Rev: NA
Part #: QTE/QSE-100-01-L-D-A	Lot #: NA	Tech: T. Cook	Eng: J. Tozier
Part description: 0.8mm Centerline High Speed Connector			Qty to test: 20
Test Start: 1/30/02	Test Completed: 2/27/02		

**INSULATION RESISTANCE (IR), Non-Lubricated**

<b>Test Date:</b>	Initial	1/30/2002
<b>Operator:</b>		TC
<b>Temperature (C):</b>		21
<b>Humidity (RH):</b>		43%
<b>Pressure (In. Hg):</b>		29.87
<b>Equipment Code Number</b>		19
<b>Contact Description</b>		QSE/QTE
<b>Test Conditions</b>	<b>YES</b>	<b>NO</b>
<b>Between Adjacent Contacts</b>	X	
<b>Mated</b>		X
<b>PC Mounted</b>	X	

**Rate Of Applied Voltage** 500 V Per Sec.

**Test Voltage** Until Breakdown Occurs

Board/Sample #	Insulation Resistance	Values in Mohms
1	100000	
2	100000	

<b>Test Date:</b>	After	2/13/2002
<b>Temperature (C):</b>	Thermals	23
<b>Humidity (RH):</b>		20%

Board/Sample #	Insulation Resistance	Values in Mohms
1	100000	
2	100000	

<b>Test Date:</b>	After	2/27/2002
<b>Temperature (C):</b>	Humidity	22
<b>Humidity (RH):</b>		20%

Board/Sample #	Insulation Resistance	Values in Mohms
1	50000	
2	25000	



Project Number: NA		Tracking Code: 0202--0592	
Requested by: Eric Schrimper		Date: 1/11/02	Product Rev: NA
Part #: QTE/QSE-100-01-L-D-A	Lot #: NA	Tech: T. Cook	Eng: J. Tozier
Part description: 0.8mm Centerline High Speed Connector			Qty to test: 20
Test Start: 1/30/02	Test Completed: 2/27/02		

**INSULATION RESISTANCE (IR), Lubricated**

<b>Test Date:</b>	Initial	1/30/2002
<b>Operator:</b>		TC
<b>Temperature (C):</b>		21
<b>Humidity (RH):</b>		43%
<b>Pressure (In. Hg):</b>		29.87
<b>Equipment Code Number</b>		19
<b>Contact Description</b>		QSE/QTE

<b>Test Conditions</b>	<b>YES</b>	<b>NO</b>
	<b>Between Adjacent Contacts</b>	X
	<b>Mated</b>	X
<b>PC Mounted</b>	X	

**Rate Of Applied Voltage** 500 V Per Sec.

**Test Voltage** Until Breakdown Occurs

<b>Board/Sample #</b>	<b>Insulation Resistance</b>	Values in Mohms
1	100000	
2	100000	

<b>Test Date:</b>	After	2/13/2002
<b>Temperature (C):</b>	Thermals	23
<b>Humidity (RH):</b>		20%

<b>Board/Sample #</b>	<b>Insulation Resistance</b>	Values in Mohms
1	100000	
2	100000	

<b>Test Date:</b>	After	2/27/2002
<b>Temperature (C):</b>	Humidity	22
<b>Humidity (RH):</b>		20%

<b>Board/Sample #</b>	<b>Insulation Resistance</b>	Values in Mohms
1	50000	
2	50000	



Project Number: NA		Tracking Code: 0202--0592	
Requested by: Eric Schrimper		Date: 1/11/02	Product Rev: NA
Part #: QTE/QSE-100-01-L-D-A	Lot #: NA	Tech: T. Cook	Eng: J. Tozier
Part description: 0.8mm Centerline High Speed Connector			Qty to test: 20
Test Start: 1/30/02	Test Completed: 2/27/02		

### DIELECTRIC WITHSTANDING VOLTAGE (DWV) Non-Lubricated

<b>Test Date:</b>	Initial	1/30/2002
<b>Operator:</b>		TC
<b>Temperature (C):</b>		21
<b>Humidity (RH):</b>		43%
<b>Pressure (In. Hg):</b>		29.87
<b>Equipment Code Number</b>		19
<b>Contact Description</b>		QSE/QTE
<b>Test Conditions</b>	<b>YES</b>	<b>NO</b>
<b>Between Adjacent Contacts</b>	X	
<b>Mated</b>		X
<b>PC Mounted</b>	X	

**Rate Of Applied Voltage** 500 V Per Sec.

**Test Voltage, VAC** Until Breakdown Occurs

<b>Board/Sample #</b>	<b>Breakdown Voltage</b>	<b>DWV</b>	<b>Working Voltage</b>
1	1650	1238	413
2	1600	1200	400

<b>Test Date:</b>	After Thermals	2/13/2002	
<b>Temperature (C):</b>		23	
<b>Humidity (RH):</b>		20%	
<b>Board/Sample #</b>	<b>Breakdown Voltage</b>	<b>DWV</b>	<b>Working Voltage</b>
1	1700	1275	425
2	2050	1538	513

<b>Test Date:</b>	After Humidity	2/15/2002	
<b>Temperature (C):</b>		23	
<b>Humidity (RH):</b>		26%	
<b>Board/Sample #</b>	<b>Breakdown Voltage</b>	<b>DWV</b>	<b>Working Voltage</b>
1	1650	1238	413
2	1750	1313	438



Project Number: NA		Tracking Code: 0202--0592	
Requested by: Eric Schrimper		Date: 1/11/02	Product Rev: NA
Part #: QTE/QSE-100-01-L-D-A	Lot #: NA	Tech: T. Cook	Eng: J. Tozier
Part description: 0.8mm Centerline High Speed Connector			Qty to test: 20
Test Start: 1/30/02	Test Completed: 2/27/02		

### DIELECTRIC WITHSTANDING VOLTAGE (DWV) Lubricated

<b>Test Date:</b>	Initial	1/30/2002
<b>Operator:</b>		TC
<b>Temperature (C):</b>		21
<b>Humidity (RH):</b>		43%
<b>Pressure (In. Hg):</b>		29.87
<b>Equipment Code Number</b>		19
<b>Contact Description</b>		QSE/QTE
<b>Test Conditions</b>	<b>YES</b>	<b>NO</b>
<b>Between Adjacent Contacts</b>	X	
<b>Mated</b>		X
<b>PC Mounted</b>	X	

**Rate Of Applied Voltage** 500 V Per Sec.

**Test Voltage, VAC** Until Breakdown Occurs

<b>Board/Sample #</b>	<b>Breakdown Voltage</b>	<b>DWV</b>	<b>Working Voltage</b>
1	1900	1425	475
2	1700	1275	425

<b>Test Date:</b>	After Thermals	2/13/2002	
<b>Temperature (C):</b>		23	
<b>Humidity (RH):</b>		20%	
<b>Board/Sample #</b>	<b>Breakdown Voltage</b>	<b>DWV</b>	<b>Working Voltage</b>
1	2450	1838	613
2	2200	1650	550

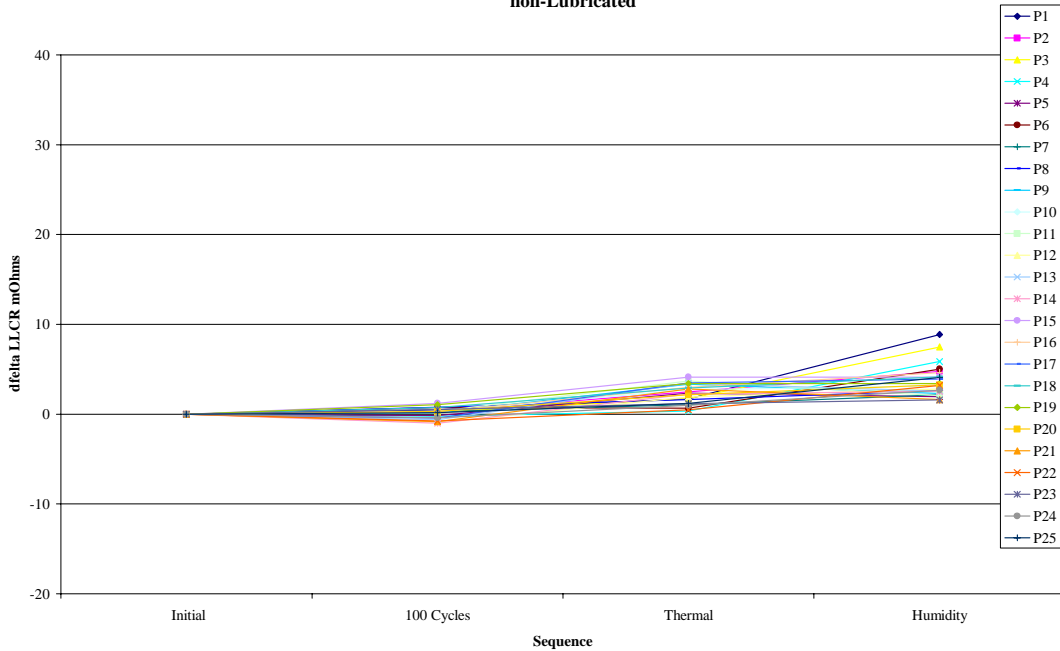
<b>Test Date:</b>	After Humidity	2/15/2002	
<b>Temperature (C):</b>		23	
<b>Humidity (RH):</b>		26%	
<b>Pressure (In. Hg):</b>		29.32	
<b>Board/Sample #</b>	<b>Breakdown Voltage</b>	<b>DWV</b>	<b>Working Voltage</b>
1	1900	1425	475
2	2150	1613	538



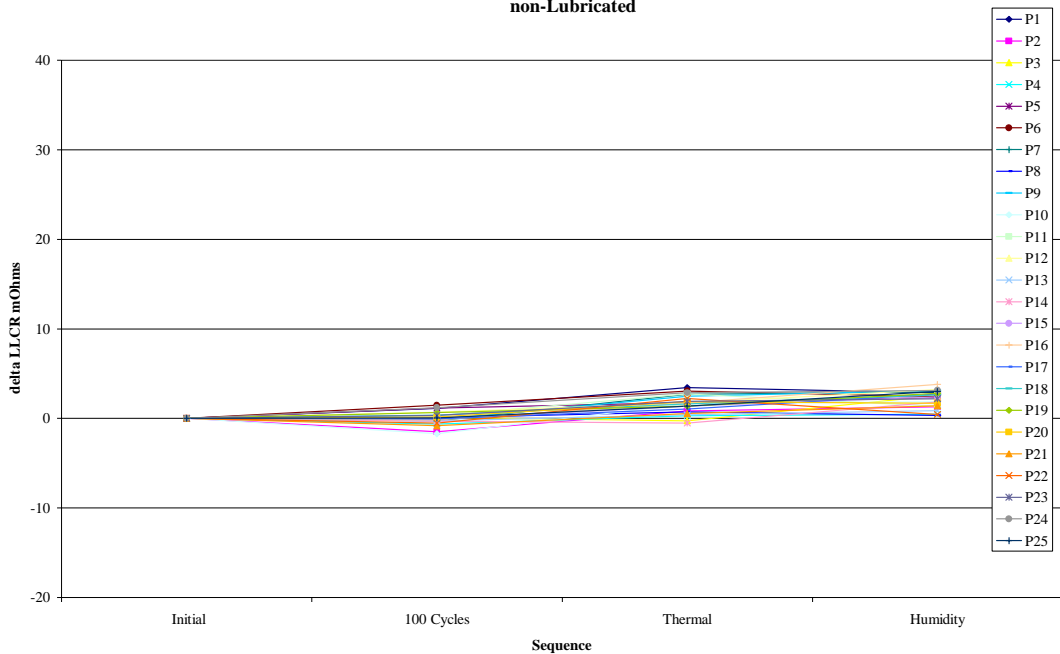
Project Number: NA		Tracking Code: 0202--0592	
Requested by: Eric Schrimper		Date: 1/11/02	Product Rev: NA
Part #: QTE/QSE-100-01-L-D-A	Lot #: NA	Tech: T. Cook	Eng: J. Tozier
Part description: 0.8mm Centerline High Speed Connector			Qty to test: 20
Test Start: 1/30/02	Test Completed: 2/27/02		

### LLCR – Non-Lubricated

Board #1  
non-Lubricated



Board #2  
non-Lubricated

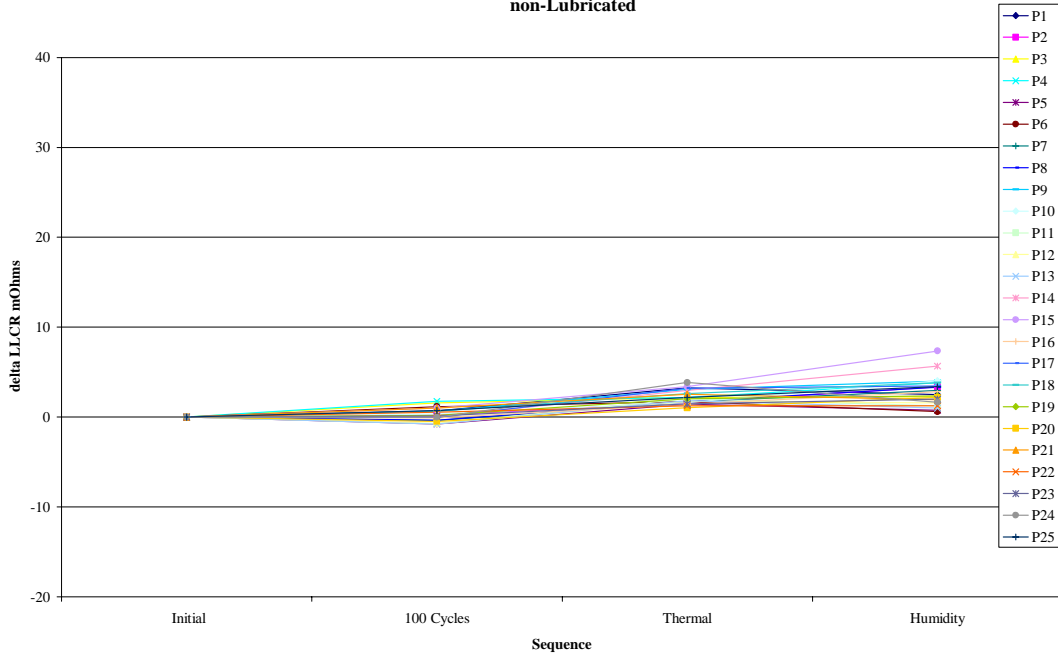




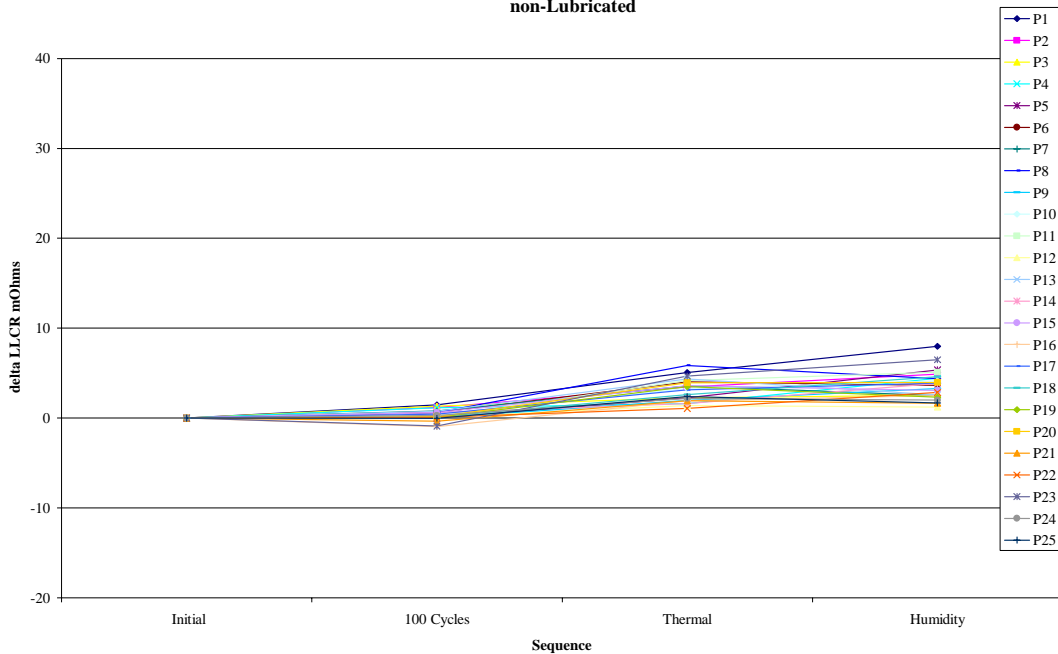
Project Number: NA		Tracking Code: 0202--0592	
Requested by: Eric Schrimper		Date: 1/11/02	Product Rev: NA
Part #: QTE/QSE-100-01-L-D-A	Lot #: NA	Tech: T. Cook	Eng: J. Tozier
Part description: 0.8mm Centerline High Speed Connector			Qty to test: 20
Test Start: 1/30/02	Test Completed: 2/27/02		

### LLCR – Non-Lubricated continued

Board #3  
non-Lubricated



Board #4  
non-Lubricated

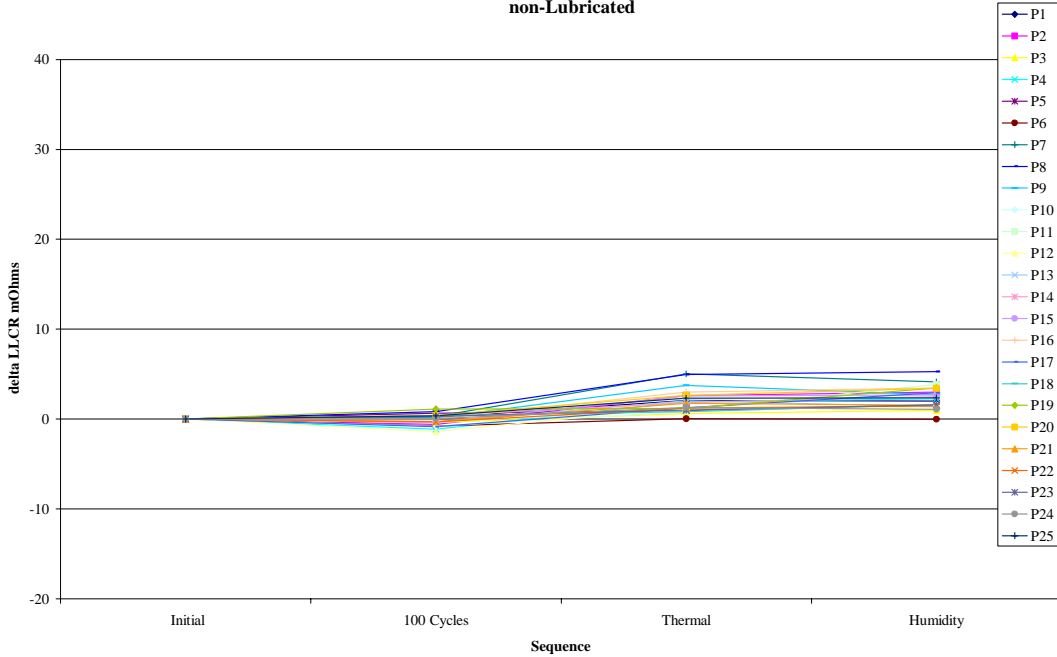




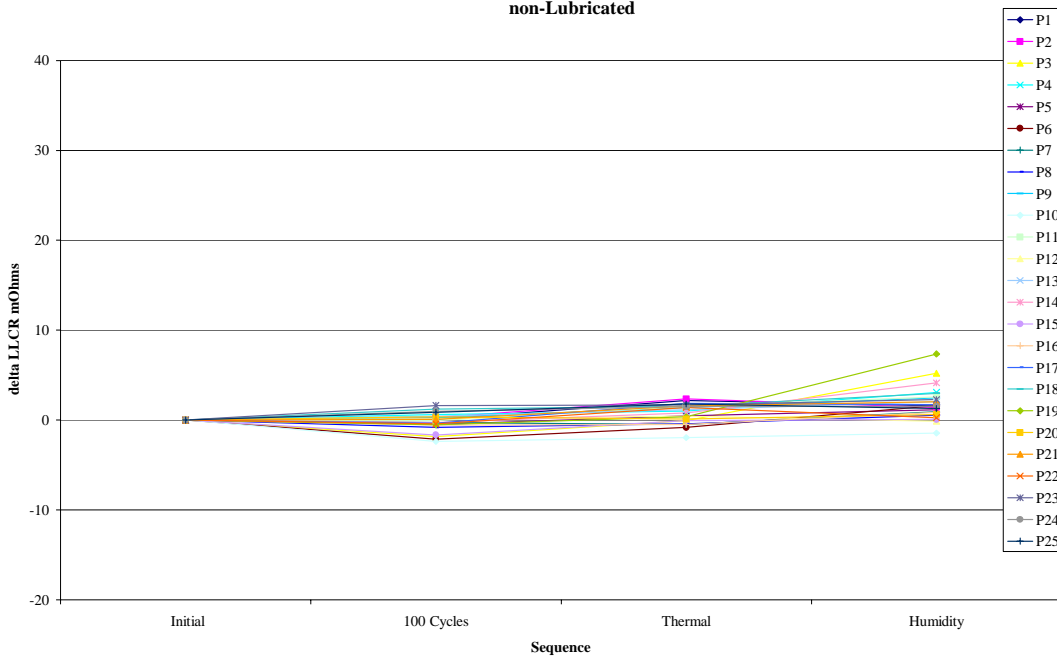
Project Number: NA		Tracking Code: 0202--0592	
Requested by: Eric Schrimper		Date: 1/11/02	Product Rev: NA
Part #: QTE/QSE-100-01-L-D-A	Lot #: NA	Tech: T. Cook	Eng: J. Tozier
Part description: 0.8mm Centerline High Speed Connector			Qty to test: 20
Test Start: 1/30/02	Test Completed: 2/27/02		

### LLCR – Non-Lubricated continued

Board #5  
non-Lubricated



Board #6  
non-Lubricated

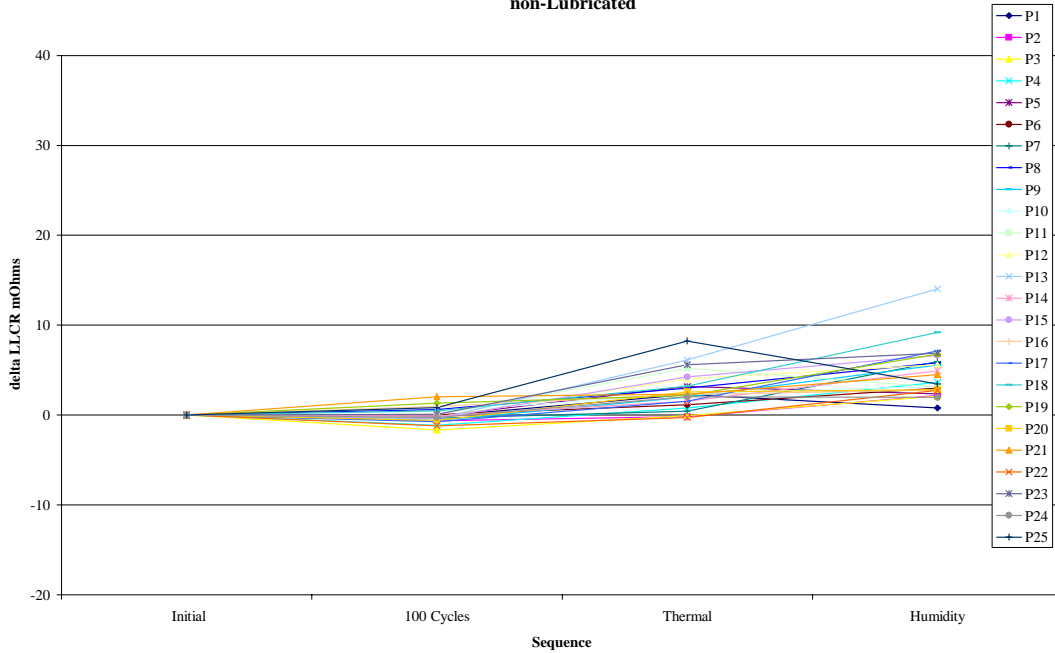




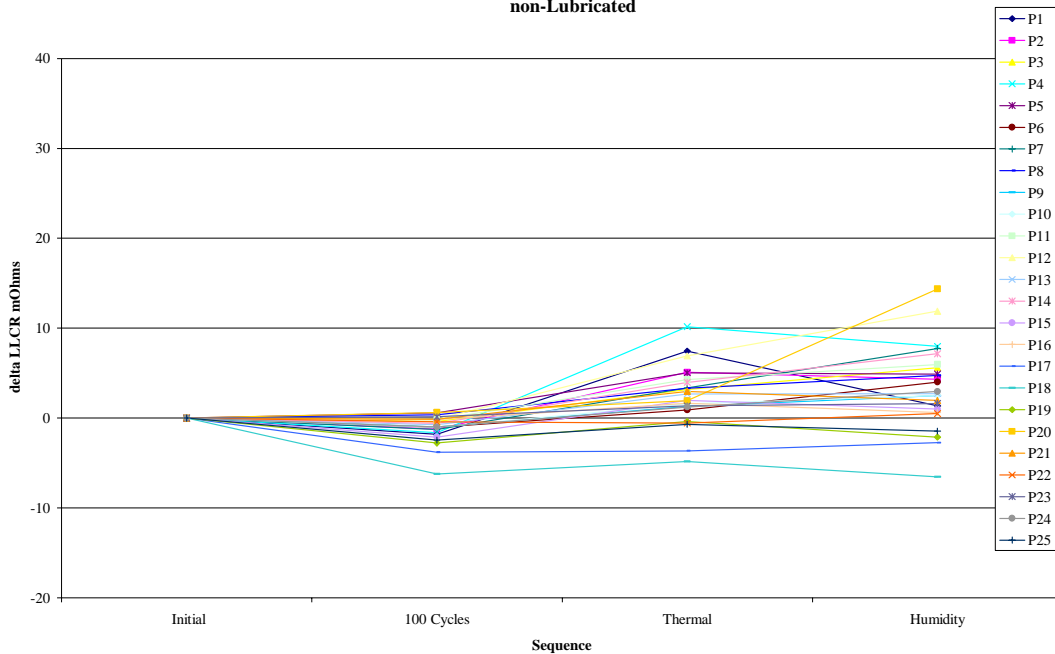
Project Number: NA		Tracking Code: 0202--0592	
Requested by: Eric Schrimper		Date: 1/11/02	Product Rev: NA
Part #: QTE/QSE-100-01-L-D-A	Lot #: NA	Tech: T. Cook	Eng: J. Tozier
Part description: 0.8mm Centerline High Speed Connector			Qty to test: 20
Test Start: 1/30/02	Test Completed: 2/27/02		

### LLCR – Non-Lubricated continued

Board #7  
non-Lubricated



Board #8  
non-Lubricated





Project Number: NA		Tracking Code: 0202--0592	
Requested by: Eric Schrimper		Date: 1/11/02	Product Rev: NA
Part #: QTE/QSE-100-01-L-D-A	Lot #: NA	Tech: T. Cook	Eng: J. Tozier
Part description: 0.8mm Centerline High Speed Connector			Qty to test: 20
Test Start: 1/30/02	Test Completed: 2/27/02		

**LLCR Non-Lubricated**

Date	Jan. 30 2002	Jan. 30 2002	Feb. 12 2002	Feb. 26 2002
Room Temp C	22	23	23	24
RH	19%	20%	21%	20%
Initials	T. Cook	T. Cook	T. Cook	Troy Cook
Count	200	200	200	200

mOhm values		Actual	Delta	Delta	Delta
Board	Position	Initial	100 Cycles	Thermal	Humidity
1	P1	22.8	0.5	1.7	8.9
1	P2	22.0	0.3	2.5	4.8
1	P3	21.4	0.2	1.7	7.5
1	P4	22.8	-0.2	0.4	5.9
1	P5	22.7	-0.1	2.3	2.0
1	P6	22.5	0.8	0.6	5.0
1	P7	20.8	0.2	1.0	2.2
1	P8	21.3	0.8	1.6	2.6
1	P9	21.6	0.1	3.3	2.3
1	P10	21.6	0.3	2.8	3.1
1	P11	22.9	0.3	3.7	2.1
1	P12	22.4	-0.9	1.9	2.8
1	P13	21.7	-0.6	3.4	2.5
1	P14	23.2	-1.0	2.2	2.5
1	P15	21.1	1.2	4.1	4.1
1	P16	22.2	0.3	3.0	4.6
1	P17	21.9	-0.4	3.5	3.9
1	P18	21.8	0.8	2.9	4.2
1	P19	22.3	1.0	3.4	3.4
1	P20	21.9	0.3	2.2	3.3
1	P21	22.6	-0.8	2.8	1.6
1	P22	22.4	-0.8	0.5	3.2
1	P23	21.9	0.5	1.1	1.6
1	P24	21.8	-0.4	1.0	2.7
1	P25	22.2	0.1	1.2	4.1
2	P1	21.4	1.1	3.4	2.9
2	P2	23.2	-1.5	0.8	1.3
2	P3	22.5	0.1	-0.3	2.5
2	P4	22.2	-0.6	0.3	0.5



Project Number: NA		Tracking Code: 0202--0592			
Requested by: Eric Schrimper		Date: 1/11/02		Product Rev: NA	
Part #: QTE/QSE-100-01-L-D-A		Lot #: NA	Tech: T. Cook		Eng: J. Tozier
Part description: 0.8mm Centerline High Speed Connector					Qty to test: 20
Test Start: 1/30/02		Test Completed: 2/27/02			

2	P5	21.3	1.2	1.8	2.3
2	P6	21.3	1.5	3.1	2.4
2	P7	21.8	-0.3	2.7	3.0
2	P8	22.3	0.1	0.7	0.3
2	P9	22.3	-0.1	2.5	3.1
2	P10	22.6	-1.7	1.6	1.9
2	P11	22.6	0.3	2.7	1.4
2	P12	21.8	0.7	1.8	3.2
2	P13	23.1	-0.2	0.4	0.9
2	P14	22.9	-0.3	-0.5	1.8
2	P15	22.3	0.0	1.4	2.4
2	P16	21.9	-0.1	1.7	3.8
2	P17	21.7	-0.1	1.0	2.7
2	P18	21.9	0.4	1.6	2.6
2	P19	21.8	0.7	1.4	2.8
2	P20	22.5	0.1	1.9	1.7
2	P21	22.6	-0.8	0.5	1.4
2	P22	22.6	-0.5	2.2	0.4
2	P23	22.0	0.3	1.9	2.2
2	P24	21.7	1.2	2.9	3.1
2	P25	22.1	0.0	1.4	3.0
3	P1	22.4	0.7	3.3	2.5
3	P2	23.0	0.2	1.6	3.3
3	P3	21.3	1.6	2.2	2.2
3	P4	21.2	1.7	2.2	3.8
3	P5	22.6	-0.8	1.4	0.8
3	P6	22.0	1.1	1.7	0.6
3	P7	22.3	-0.4	1.7	3.0
3	P8	22.9	-0.3	1.7	3.3
3	P9	21.8	0.7	3.1	4.0
3	P10	21.7	0.3	1.6	4.0
3	P11	22.2	-0.7	2.0	1.2
3	P12	22.6	-0.7	1.8	1.6
3	P13	22.1	-0.8	1.8	1.0
3	P14	21.3	0.0	3.0	5.7
3	P15	21.6	1.0	3.4	7.3
3	P16	22.3	-0.1	1.4	2.8
3	P17	21.7	0.0	3.2	3.5



Project Number: NA		Tracking Code: 0202--0592			
Requested by: Eric Schrimper		Date: 1/11/02		Product Rev: NA	
Part #: QTE/QSE-100-01-L-D-A		Lot #: NA	Tech: T. Cook		Eng: J. Tozier
Part description: 0.8mm Centerline High Speed Connector					Qty to test: 20
Test Start: 1/30/02		Test Completed: 2/27/02			

3	P18	21.4	0.7	2.6	3.8
3	P19	22.0	0.2	2.0	2.3
3	P20	21.9	-0.5	1.0	2.2
3	P21	22.2	1.0	2.6	1.9
3	P22	21.8	0.5	1.3	1.2
3	P23	21.7	0.1	1.5	2.0
3	P24	21.8	0.0	3.8	1.7
3	P25	21.7	0.7	2.2	3.4
4	P1	21.4	1.5	5.1	8.0
4	P2	21.8	1.2	3.5	4.9
4	P3	22.9	1.3	2.3	2.5
4	P4	22.2	1.2	1.6	4.4
4	P5	23.0	0.0	2.2	5.4
4	P6	22.2	0.6	4.0	3.7
4	P7	22.5	0.8	3.6	2.5
4	P8	22.0	0.6	5.9	4.4
4	P9	22.6	0.0	2.0	3.3
4	P10	22.3	0.3	3.3	4.1
4	P11	22.1	0.1	4.2	5.1
4	P12	22.6	0.1	1.4	1.2
4	P13	22.0	0.7	4.3	2.6
4	P14	22.3	0.6	1.6	3.8
4	P15	22.3	0.6	3.6	3.1
4	P16	22.9	-1.0	1.9	2.5
4	P17	22.3	0.4	3.1	3.9
4	P18	22.2	0.1	2.6	4.6
4	P19	22.6	0.1	3.5	2.3
4	P20	22.2	0.2	4.0	4.0
4	P21	24.0	-0.4	1.9	1.7
4	P22	23.0	0.1	1.1	2.8
4	P23	23.2	-0.9	4.7	6.5
4	P24	22.0	0.3	2.2	2.0
4	P25	22.1	0.0	2.4	1.7
5	P1	23.9	0.2	2.1	2.0
5	P2	24.2	-0.6	2.6	3.0
5	P3	23.7	-0.4	0.6	1.0
5	P4	23.5	-1.1	1.9	2.2
5	P5	23.4	0.7	0.9	1.5



Project Number: NA		Tracking Code: 0202--0592			
Requested by: Eric Schrimper		Date: 1/11/02		Product Rev: NA	
Part #: QTE/QSE-100-01-L-D-A		Lot #: NA	Tech: T. Cook		Eng: J. Tozier
Part description: 0.8mm Centerline High Speed Connector					Qty to test: 20
Test Start: 1/30/02		Test Completed: 2/27/02			

5	P6	23.2	-0.8	0.0	0.0
5	P7	22.2	0.3	5.0	4.1
5	P8	22.4	0.8	5.0	5.3
5	P9	22.0	0.2	3.7	2.7
5	P10	22.8	-0.8	0.8	1.6
5	P11	22.7	-0.4	1.0	3.8
5	P12	23.9	-1.4	1.4	1.2
5	P13	22.4	-0.3	2.0	1.3
5	P14	22.0	0.4	1.8	2.5
5	P15	22.4	-0.3	2.6	2.7
5	P16	22.4	0.0	3.0	3.5
5	P17	23.7	-0.9	1.3	2.9
5	P18	23.5	0.4	0.8	1.6
5	P19	22.8	1.1	1.2	3.5
5	P20	22.7	0.4	2.6	3.4
5	P21	24.8	-0.3	1.8	1.5
5	P22	24.0	-0.3	1.2	1.5
5	P23	21.8	0.3	1.0	1.6
5	P24	23.1	0.0	1.3	1.1
5	P25	22.6	0.4	2.3	2.3
6	P1	23.7	0.1	2.2	1.6
6	P2	22.5	0.3	2.3	1.4
6	P3	23.4	-1.8	-0.1	5.2
6	P4	22.3	0.6	1.0	3.1
6	P5	23.1	-0.5	0.5	1.2
6	P6	23.8	-2.1	-0.8	1.6
6	P7	23.6	-0.3	-0.5	0.9
6	P8	23.6	-0.8	-0.4	0.5
6	P9	22.5	0.3	1.4	2.4
6	P10	25.6	-2.4	-2.0	-1.5
6	P11	22.0	-0.1	1.5	2.6
6	P12	23.1	0.1	0.4	-0.1
6	P13	22.3	0.4	1.2	2.0
6	P14	22.7	-0.3	0.8	4.1
6	P15	24.2	-1.7	-0.1	0.1
6	P16	23.2	-0.6	-0.5	0.9
6	P17	22.7	-0.3	1.9	1.7
6	P18	22.5	1.2	1.5	3.0



Project Number: NA		Tracking Code: 0202--0592			
Requested by: Eric Schrimper		Date: 1/11/02		Product Rev: NA	
Part #: QTE/QSE-100-01-L-D-A		Lot #: NA	Tech: T. Cook		Eng: J. Tozier
Part description: 0.8mm Centerline High Speed Connector					Qty to test: 20
Test Start: 1/30/02		Test Completed: 2/27/02			

6	P19	24.0	-0.5	0.4	7.4
6	P20	23.0	0.4	0.1	0.6
6	P21	22.6	0.1	1.5	2.0
6	P22	23.0	-0.4	1.4	0.3
6	P23	22.0	1.6	1.7	2.3
6	P24	22.6	1.0	1.5	1.5
6	P25	22.7	0.9	1.8	1.3
7	P1	24.0	-0.1	2.3	0.8
7	P2	23.8	-0.6	-0.2	2.2
7	P3	23.8	-1.6	-0.1	2.1
7	P4	23.2	-1.1	0.8	3.6
7	P5	22.9	-0.1	3.2	2.3
7	P6	22.9	0.0	1.2	3.0
7	P7	23.0	-0.3	0.4	6.0
7	P8	22.9	0.6	3.0	5.8
7	P9	23.1	-0.6	2.0	5.6
7	P10	22.2	0.4	2.4	3.2
7	P11	22.4	0.0	5.2	3.1
7	P12	24.2	-0.2	4.1	5.6
7	P13	23.4	-0.4	6.1	14.0
7	P14	22.9	-0.1	1.5	4.9
7	P15	24.1	-0.3	4.2	6.6
7	P16	22.8	1.0	2.3	2.8
7	P17	23.8	-0.7	1.5	7.1
7	P18	22.1	0.5	3.2	9.2
7	P19	23.5	1.3	2.2	6.8
7	P20	23.3	-0.6	2.6	2.8
7	P21	22.6	2.1	2.3	4.5
7	P22	24.8	-1.2	-0.3	2.7
7	P23	22.2	0.1	5.6	6.9
7	P24	23.3	-0.3	2.0	1.9
7	P25	23.6	0.8	8.2	3.4
8	P1	24.0	-1.8	7.5	1.4
8	P2	24.1	-1.2	5.1	4.3
8	P3	22.6	-0.4	3.2	5.6
8	P4	23.8	-1.6	10.2	8.0
8	P5	22.3	0.6	5.0	4.9
8	P6	24.6	-1.0	0.9	4.0



Project Number: NA		Tracking Code: 0202--0592			
Requested by: Eric Schrimper		Date: 1/11/02		Product Rev: NA	
Part #: QTE/QSE-100-01-L-D-A		Lot #: NA	Tech: T. Cook		Eng: J. Tozier
Part description: 0.8mm Centerline High Speed Connector					Qty to test: 20
Test Start: 1/30/02		Test Completed: 2/27/02			

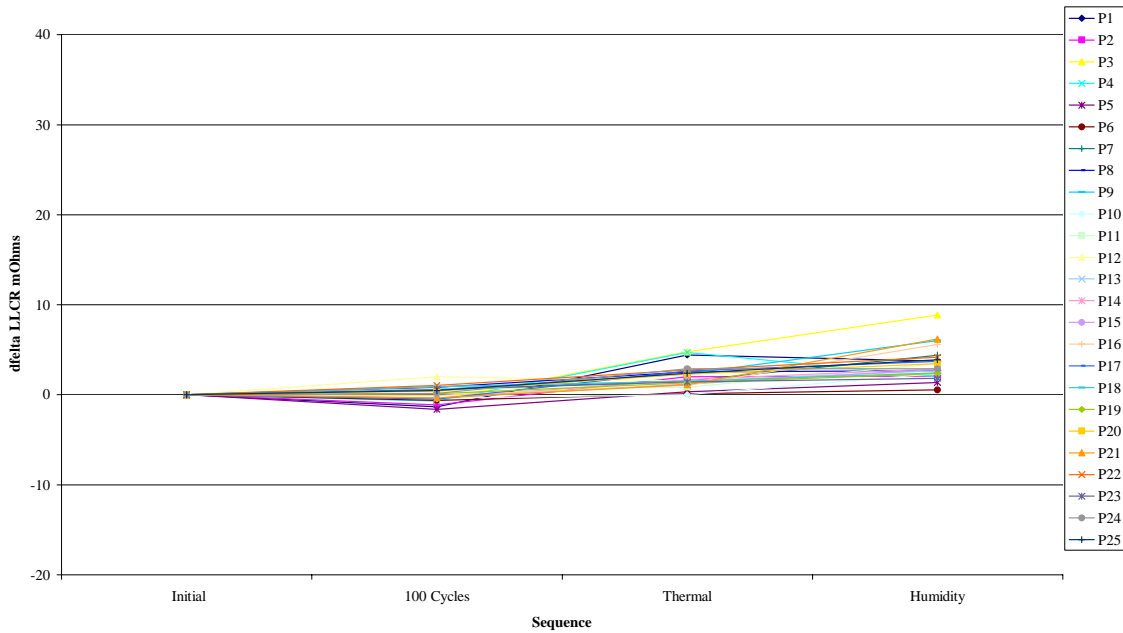
8	P7	24.1	-1.3	3.4	7.8
8	P8	23.3	0.4	3.3	4.7
8	P9	24.6	-1.0	1.3	2.5
8	P10	24.5	-1.0	1.6	2.5
8	P11	23.2	-0.2	4.3	6.0
8	P12	22.6	-0.1	6.9	11.9
8	P13	24.0	-0.7	2.7	2.7
8	P14	23.0	-0.6	4.0	7.2
8	P15	24.3	-2.1	2.0	1.0
8	P16	22.4	-0.2	1.6	0.6
8	P17	27.7	-3.8	-3.6	-2.8
8	P18	29.3	-6.2	-4.8	-6.6
8	P19	24.7	-2.8	-0.4	-2.1
8	P20	23.8	0.6	1.9	14.4
8	P21	23.0	-0.1	3.0	2.0
8	P22	23.7	-0.4	-0.6	0.5
8	P23	23.6	0.1	1.4	1.6
8	P24	24.0	-1.0	1.2	3.0
8	P25	24.9	-2.4	-0.7	-1.4



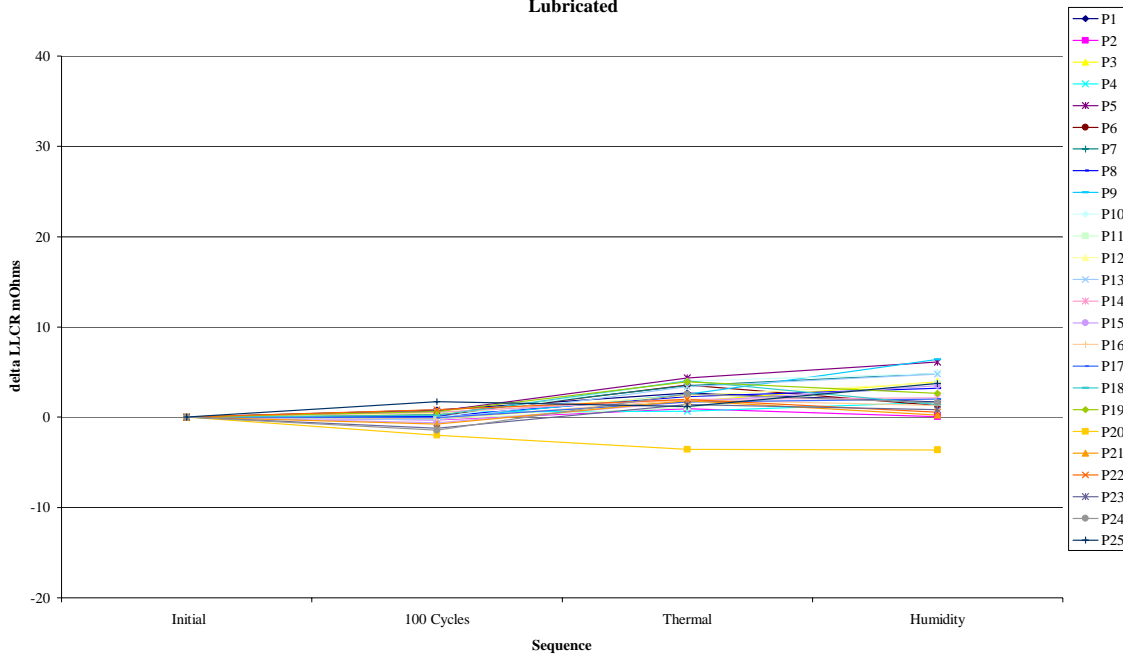
Project Number: NA		Tracking Code: 0202--0592	
Requested by: Eric Schrimper		Date: 1/11/02	Product Rev: NA
Part #: QTE/QSE-100-01-L-D-A	Lot #: NA	Tech: T. Cook	Eng: J. Tozier
Part description: 0.8mm Centerline High Speed Connector			Qty to test: 20
Test Start: 1/30/02	Test Completed: 2/27/02		

### LLCR – Lubricated

**Board #1  
Lubricated**



**Board #2  
Lubricated**

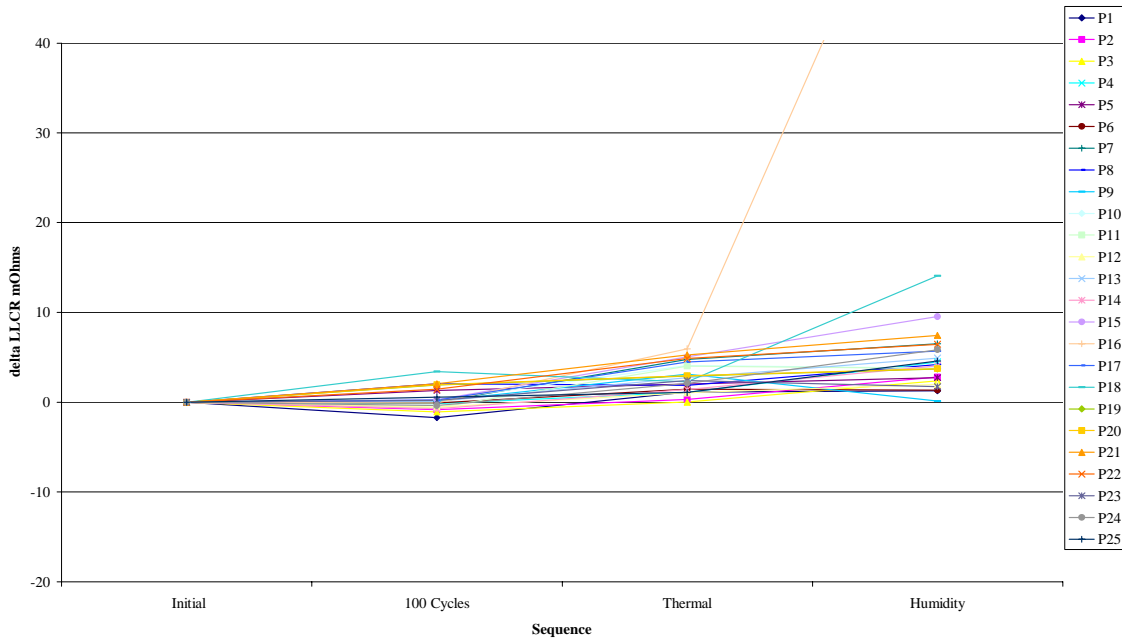




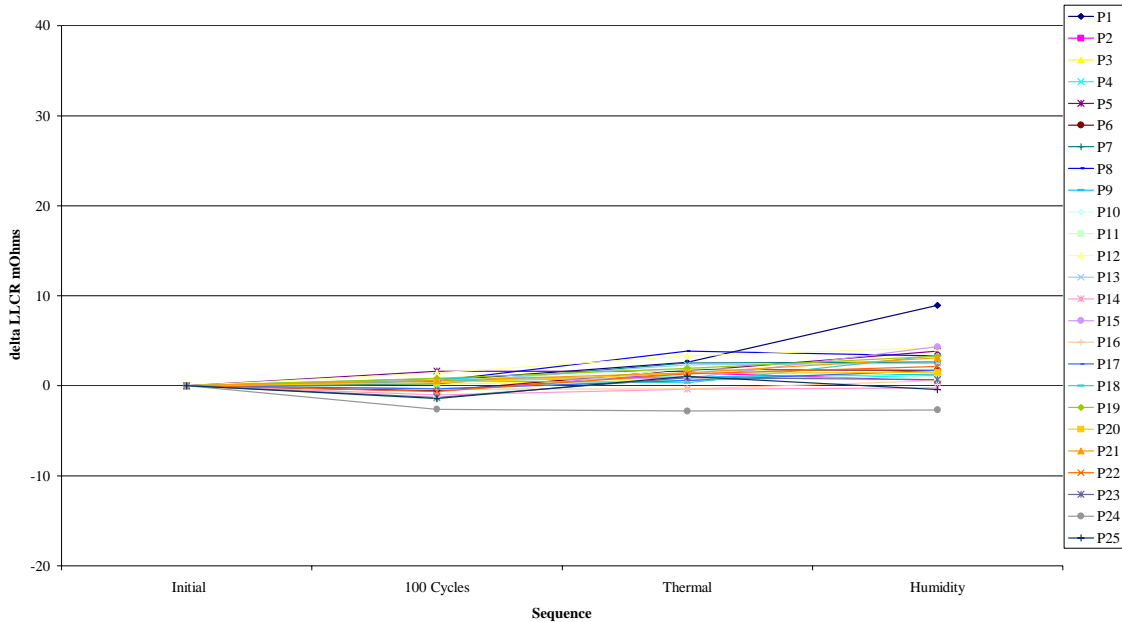
Project Number: NA		Tracking Code: 0202--0592	
Requested by: Eric Schrimper		Date: 1/11/02	Product Rev: NA
Part #: QTE/QSE-100-01-L-D-A	Lot #: NA	Tech: T. Cook	Eng: J. Tozier
Part description: 0.8mm Centerline High Speed Connector			Qty to test: 20
Test Start: 1/30/02	Test Completed: 2/27/02		

### LLCR – Lubricated continued

**Board #3  
Lubricated**



**Board #4  
Lubricated**

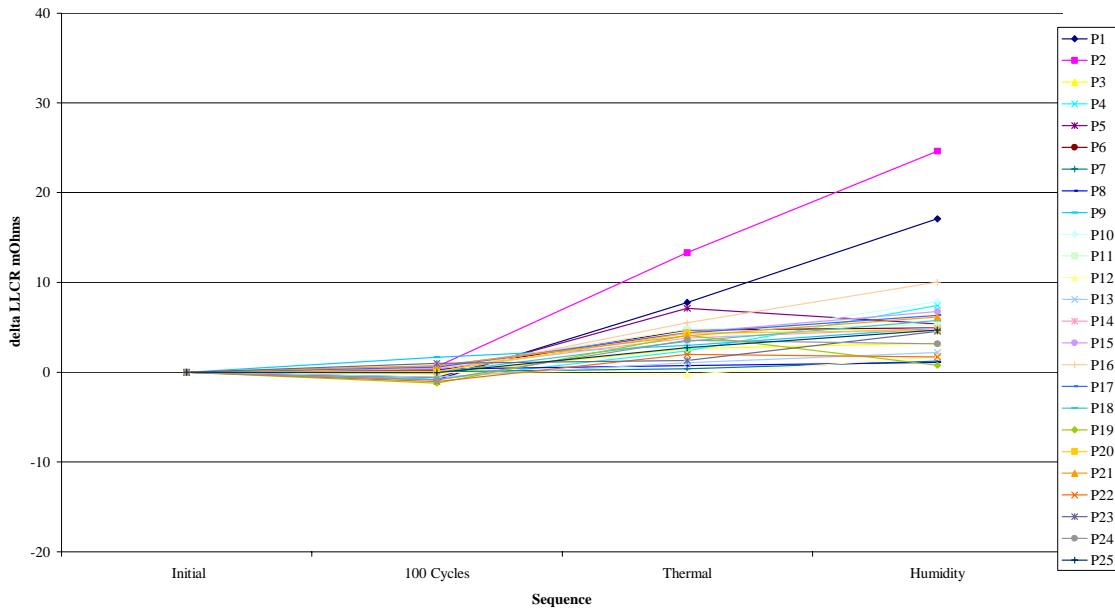




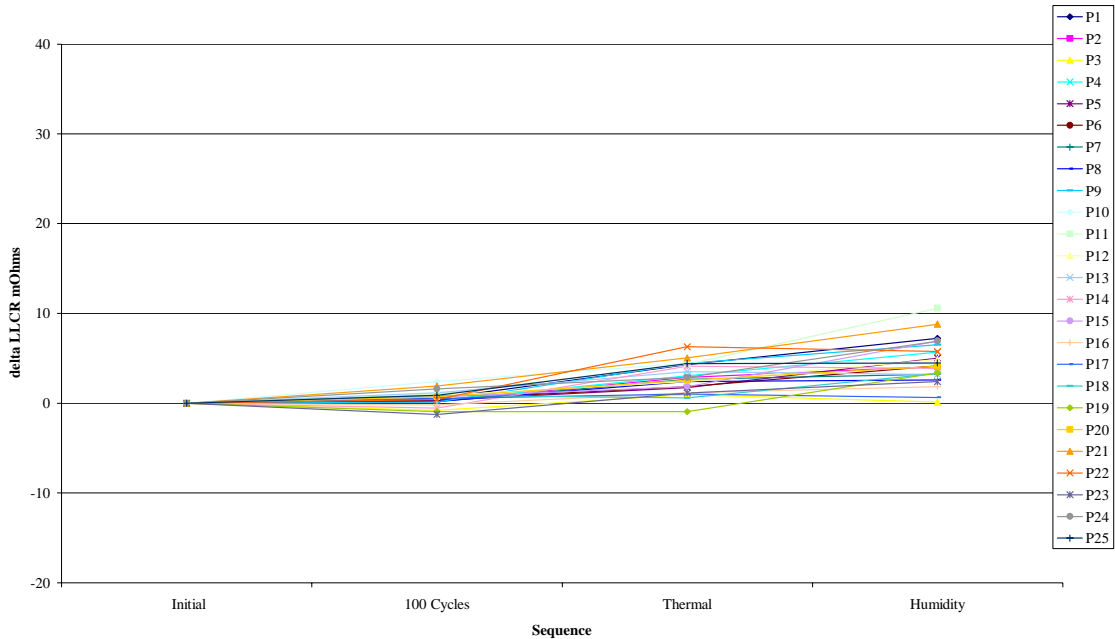
Project Number: NA		Tracking Code: 0202--0592	
Requested by: Eric Schrimper		Date: 1/11/02	Product Rev: NA
Part #: QTE/QSE-100-01-L-D-A	Lot #: NA	Tech: T. Cook	Eng: J. Tozier
Part description: 0.8mm Centerline High Speed Connector			Qty to test: 20
Test Start: 1/30/02	Test Completed: 2/27/02		

### LLCR – Lubricated continued

**Board #5  
Lubricated**



**Board #6  
Lubricated**

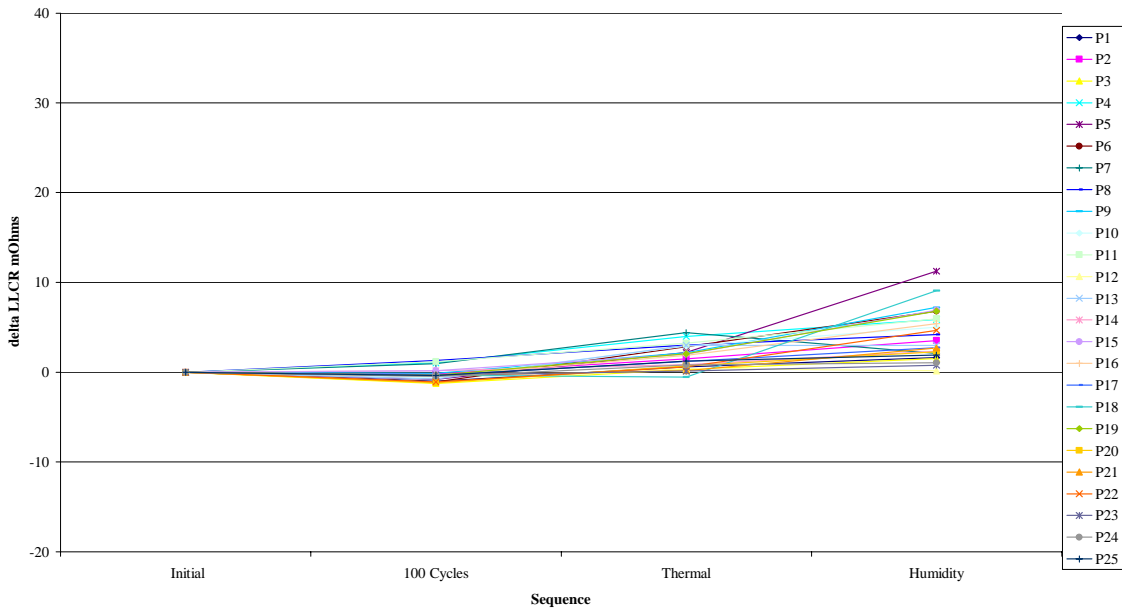




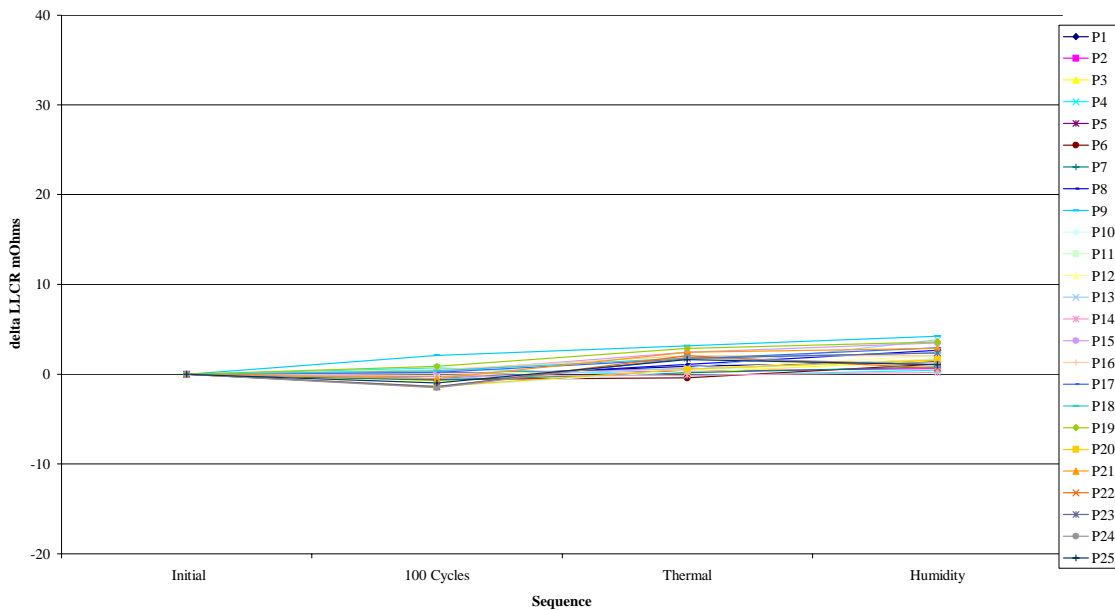
Project Number: NA		Tracking Code: 0202--0592	
Requested by: Eric Schrimper		Date: 1/11/02	Product Rev: NA
Part #: QTE/QSE-100-01-L-D-A	Lot #: NA	Tech: T. Cook	Eng: J. Tozier
Part description: 0.8mm Centerline High Speed Connector			Qty to test: 20
Test Start: 1/30/02	Test Completed: 2/27/02		

### LLCR – Lubricated continued

**Board #7  
Lubricated**



**Board #8  
Lubricated**





Project Number: NA		Tracking Code: 0202--0592	
Requested by: Eric Schrimper		Date: 1/11/02	Product Rev: NA
Part #: QTE/QSE-100-01-L-D-A	Lot #: NA	Tech: T. Cook	Eng: J. Tozier
Part description: 0.8mm Centerline High Speed Connector			Qty to test: 20
Test Start: 1/30/02	Test Completed: 2/27/02		

**LLCR Lubricated**

Date	Jan. 30 2002	Jan. 30 2002	Feb. 12 2002	Feb. 26 2002
Room Temp C	22	23	23	24
RH	19%	20%	21%	20%
Initials	T. Cook	T. Cook	T. Cook	Troy Cook
Count	200	200	200	200

mOhm values		Actual	Delta	Delta	Delta
Board	Position	Initial	100 Cycles	Thermal	Humidity
1	P1	23.2	-1.3	4.4	3.7
1	P2	23.2	-1.1	2.0	2.1
1	P3	23.1	-0.6	4.7	8.8
1	P4	22.4	-0.7	4.7	2.0
1	P5	23.5	-1.6	0.3	1.4
1	P6	23.1	-0.6	0.1	0.5
1	P7	21.3	0.6	1.6	4.4
1	P8	20.9	0.8	2.5	2.7
1	P9	21.4	0.6	2.3	6.0
1	P10	22.0	-0.4	0.0	2.3
1	P11	21.9	0.6	0.8	3.5
1	P12	21.1	2.0	1.5	2.5
1	P13	20.8	0.9	1.5	2.7
1	P14	21.3	-0.3	1.7	2.9
1	P15	21.5	-0.4	1.2	2.8
1	P16	21.2	-0.1	1.0	5.6
1	P17	21.7	-0.5	2.6	3.7
1	P18	21.0	0.9	1.5	2.4
1	P19	21.1	0.1	1.3	2.3
1	P20	21.1	0.4	2.3	3.5
1	P21	21.3	-0.3	1.1	6.2
1	P22	20.8	1.0	2.7	4.2
1	P23	20.9	0.6	1.4	1.8
1	P24	20.9	0.2	2.9	2.9
1	P25	21.7	0.5	2.4	3.9
2	P1	21.2	0.8	2.7	1.7
2	P2	21.7	-0.3	0.9	0.1
2	P3	21.4	-0.1	1.7	3.9
2	P4	21.2	0.6	0.7	1.7



Project Number: NA		Tracking Code: 0202--0592			
Requested by: Eric Schrimper		Date: 1/11/02		Product Rev: NA	
Part #: QTE/QSE-100-01-L-D-A		Lot #: NA	Tech: T. Cook		Eng: J. Tozier
Part description: 0.8mm Centerline High Speed Connector					Qty to test: 20
Test Start: 1/30/02		Test Completed: 2/27/02			

2	P5	21.2	0.7	4.4	6.1
2	P6	21.4	0.2	3.6	1.3
2	P7	21.5	0.3	3.5	4.8
2	P8	21.5	0.1	2.3	3.2
2	P9	21.1	-0.1	2.6	6.4
2	P10	21.5	-0.1	4.0	4.9
2	P11	22.3	-0.2	1.1	3.7
2	P12	21.2	0.4	2.4	3.8
2	P13	22.1	-0.3	3.4	4.8
2	P14	21.5	0.6	2.0	2.2
2	P15	22.7	-0.6	1.7	3.5
2	P16	22.0	-0.1	1.9	1.3
2	P17	21.7	-0.1	1.7	2.0
2	P18	21.7	0.2	4.0	1.4
2	P19	21.1	0.6	3.9	2.6
2	P20	27.0	-2.0	-3.6	-3.6
2	P21	23.1	-0.7	1.8	0.2
2	P22	23.1	0.8	2.0	0.6
2	P23	24.2	-1.2	1.4	0.8
2	P24	23.5	-1.4	2.6	1.6
2	P25	21.8	1.7	1.2	3.8
3	P1	23.8	-1.7	1.1	1.3
3	P2	23.1	-0.8	0.3	2.8
3	P3	22.2	-1.1	0.0	2.4
3	P4	21.5	-0.2	1.1	4.5
3	P5	21.7	1.3	2.0	2.7
3	P6	22.1	-0.1	1.5	1.3
3	P7	21.6	0.0	4.8	6.5
3	P8	22.0	2.1	1.9	4.2
3	P9	23.2	0.1	3.1	0.1
3	P10	21.7	0.3	4.1	3.8
3	P11	22.2	-0.6	4.0	3.8
3	P12	22.3	-0.5	1.1	2.0
3	P13	21.8	0.1	2.7	4.9
3	P14	23.0	-0.7	1.4	4.1
3	P15	22.5	0.3	5.0	9.5
3	P16	23.4	-0.1	5.9	68.9
3	P17	22.6	0.3	4.5	5.7



Project Number: NA		Tracking Code: 0202--0592			
Requested by: Eric Schrimper		Date: 1/11/02		Product Rev: NA	
Part #: QTE/QSE-100-01-L-D-A		Lot #: NA	Tech: T. Cook		Eng: J. Tozier
Part description: 0.8mm Centerline High Speed Connector					Qty to test: 20
Test Start: 1/30/02		Test Completed: 2/27/02			

3	P18	22.9	3.4	2.3	14.1
3	P19	22.5	1.9	2.9	3.7
3	P20	22.7	1.9	2.9	3.7
3	P21	21.9	2.0	5.3	7.5
3	P22	22.1	1.5	4.9	6.5
3	P23	22.1	0.2	2.4	1.7
3	P24	21.9	-0.4	2.1	5.9
3	P25	22.4	0.6	1.1	4.6
4	P1	22.2	0.5	2.6	8.9
4	P2	22.3	-0.6	1.4	0.6
4	P3	21.6	0.2	0.7	1.7
4	P4	21.6	-0.3	0.6	1.2
4	P5	21.1	1.6	1.6	3.8
4	P6	22.4	-0.6	1.8	1.7
4	P7	22.3	0.2	2.5	2.6
4	P8	21.7	0.5	3.8	3.3
4	P9	22.4	0.8	1.0	1.3
4	P10	22.8	0.6	1.8	0.6
4	P11	23.1	-1.5	2.0	1.0
4	P12	21.4	1.4	3.3	4.2
4	P13	21.4	0.4	2.3	2.5
4	P14	23.0	-1.0	-0.4	-0.2
4	P15	22.7	0.6	0.8	4.3
4	P16	23.0	-0.4	-0.3	0.6
4	P17	21.9	-0.3	0.6	1.7
4	P18	21.4	0.6	0.3	3.4
4	P19	21.1	0.8	1.9	3.3
4	P20	21.3	0.3	1.4	1.5
4	P21	21.8	0.6	1.4	3.1
4	P22	22.2	-0.6	1.3	2.1
4	P23	23.0	-1.3	0.9	0.7
4	P24	25.3	-2.6	-2.8	-2.7
4	P25	22.0	-1.4	1.1	-0.4
5	P1	22.4	-0.8	7.8	17.1
5	P2	22.7	0.7	13.3	24.6
5	P3	21.5	-0.2	2.6	3.2
5	P4	21.6	-0.8	2.4	7.5
5	P5	21.5	-0.6	7.1	5.4



Project Number: NA		Tracking Code: 0202--0592			
Requested by: Eric Schrimper		Date: 1/11/02		Product Rev: NA	
Part #: QTE/QSE-100-01-L-D-A		Lot #: NA	Tech: T. Cook		Eng: J. Tozier
Part description: 0.8mm Centerline High Speed Connector					Qty to test: 20
Test Start: 1/30/02		Test Completed: 2/27/02			

5	P6	21.1	0.2	4.7	4.9
5	P7	20.7	0.0	0.4	1.3
5	P8	20.7	0.3	0.8	1.1
5	P9	20.7	1.7	3.0	4.9
5	P10	21.6	0.6	3.4	7.9
5	P11	21.5	0.5	4.8	5.3
5	P12	21.6	0.0	-0.2	1.7
5	P13	21.4	-0.6	1.0	2.2
5	P14	21.4	0.4	3.8	4.9
5	P15	20.7	0.7	4.4	6.8
5	P16	21.1	0.0	5.5	10.0
5	P17	20.7	0.6	4.4	6.4
5	P18	21.4	0.0	3.4	5.8
5	P19	22.0	-1.2	4.1	0.8
5	P20	21.7	0.1	4.3	4.7
5	P21	21.1	0.7	4.1	6.2
5	P22	22.5	-1.0	2.0	1.7
5	P23	21.5	1.0	1.3	4.6
5	P24	21.6	-0.9	3.6	3.2
5	P25	22.3	0.0	2.7	4.7
6	P1	20.5	0.5	4.3	7.2
6	P2	21.6	0.3	2.9	4.1
6	P3	22.4	-0.8	0.9	0.1
6	P4	21.3	0.3	3.1	5.7
6	P5	21.3	0.3	1.7	5.0
6	P6	21.1	0.4	1.8	4.2
6	P7	21.0	0.2	2.7	3.2
6	P8	22.9	0.2	2.4	2.6
6	P9	21.2	0.1	4.5	6.5
6	P10	20.3	2.4	4.5	4.4
6	P11	20.7	1.0	4.3	10.6
6	P12	20.2	0.9	2.4	4.9
6	P13	20.8	1.2	3.5	3.2
6	P14	20.8	-0.5	4.1	3.9
6	P15	20.7	0.7	1.8	6.9
6	P16	21.3	-0.2	1.2	1.8
6	P17	21.8	0.5	1.0	0.7
6	P18	21.1	0.9	0.6	3.3



Project Number: NA		Tracking Code: 0202--0592			
Requested by: Eric Schrimper		Date: 1/11/02		Product Rev: NA	
Part #: QTE/QSE-100-01-L-D-A		Lot #: NA	Tech: T. Cook		Eng: J. Tozier
Part description: 0.8mm Centerline High Speed Connector					Qty to test: 20
Test Start: 1/30/02		Test Completed: 2/27/02			

6	P19	21.9	-0.9	-0.9	3.4
6	P20	21.0	0.7	2.6	4.1
6	P21	21.1	1.9	5.1	8.8
6	P22	20.7	0.4	6.3	5.8
6	P23	23.1	-1.2	1.1	2.4
6	P24	20.8	1.6	2.9	6.9
6	P25	21.4	0.9	4.4	4.5
7	P1	23.3	-1.0	0.6	1.6
7	P2	23.1	-0.2	1.5	3.5
7	P3	23.2	-1.2	0.3	1.5
7	P4	22.1	1.0	4.0	5.9
7	P5	23.5	-0.8	2.2	11.3
7	P6	23.2	-1.1	2.8	6.8
7	P7	21.3	0.9	4.4	2.1
7	P8	21.3	1.3	3.1	4.2
7	P9	22.2	-0.1	2.2	7.2
7	P10	22.1	-0.6	2.9	5.0
7	P11	22.0	1.2	3.2	5.9
7	P12	23.3	-1.1	0.4	0.2
7	P13	22.6	-0.7	3.0	3.0
7	P14	22.9	0.2	0.9	2.3
7	P15	22.4	0.2	2.0	6.9
7	P16	23.3	-0.5	1.9	5.4
7	P17	23.0	-0.3	1.2	2.7
7	P18	23.2	-0.3	-0.5	9.1
7	P19	23.4	-0.3	2.0	6.8
7	P20	22.8	-1.2	0.7	2.3
7	P21	23.0	-0.4	0.2	2.7
7	P22	22.9	-1.1	0.6	4.7
7	P23	22.1	-0.3	0.1	0.8
7	P24	22.8	-0.5	0.8	1.1
7	P25	22.9	-0.4	1.3	1.9
8	P1	22.5	-0.2	0.9	1.4
8	P2	22.8	0.1	0.4	0.6
8	P3	22.7	-0.7	0.2	1.5
8	P4	22.4	0.7	-0.2	0.4
8	P5	22.7	0.1	0.6	1.6
8	P6	22.7	-0.6	-0.4	1.1



Project Number: NA		Tracking Code: 0202--0592			
Requested by: Eric Schrimper		Date: 1/11/02		Product Rev: NA	
Part #: QTE/QSE-100-01-L-D-A		Lot #: NA	Tech: T. Cook		Eng: J. Tozier
Part description: 0.8mm Centerline High Speed Connector					Qty to test: 20
Test Start: 1/30/02		Test Completed: 2/27/02			

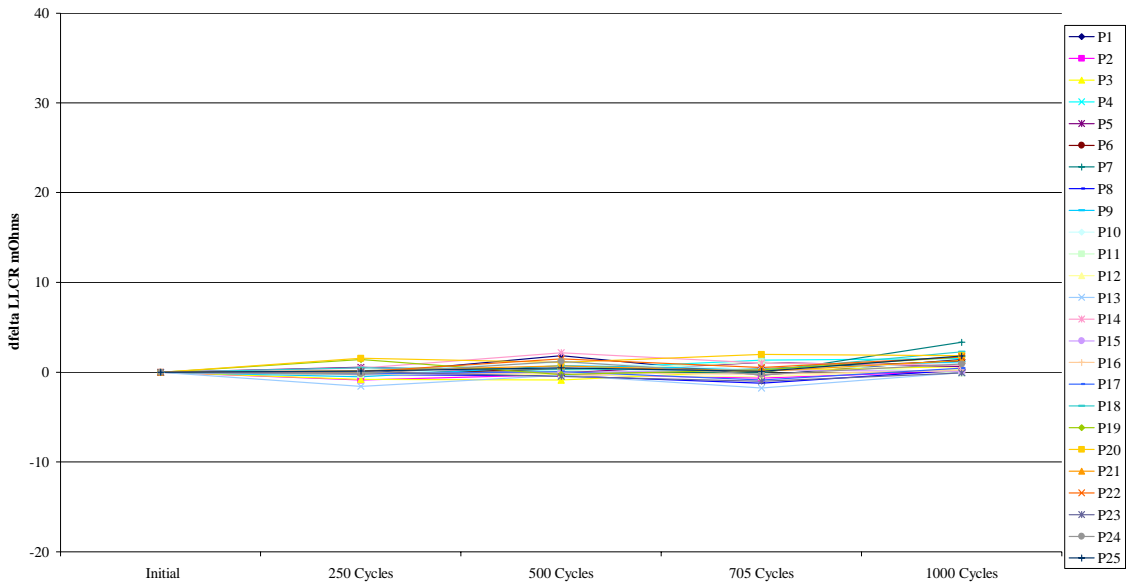
8	P7	22.9	-0.7	0.1	0.8
8	P8	23.2	-0.5	1.1	2.7
8	P9	20.0	2.1	3.2	4.2
8	P10	22.9	-1.4	0.3	1.7
8	P11	23.1	0.0	0.5	1.7
8	P12	22.4	-0.2	0.5	2.1
8	P13	22.4	-0.5	0.7	3.8
8	P14	23.2	-0.2	-0.1	0.2
8	P15	22.2	0.3	2.4	3.5
8	P16	22.4	0.5	2.0	2.1
8	P17	22.5	0.2	1.7	3.0
8	P18	22.5	0.4	1.8	2.4
8	P19	22.2	0.9	2.9	3.6
8	P20	23.0	-1.4	0.5	1.6
8	P21	23.1	-0.5	2.4	2.9
8	P22	23.3	-1.4	2.0	0.7
8	P23	23.1	-1.4	1.8	2.4
8	P24	23.8	-1.5	1.8	1.1
8	P25	23.5	-1.0	1.6	1.0



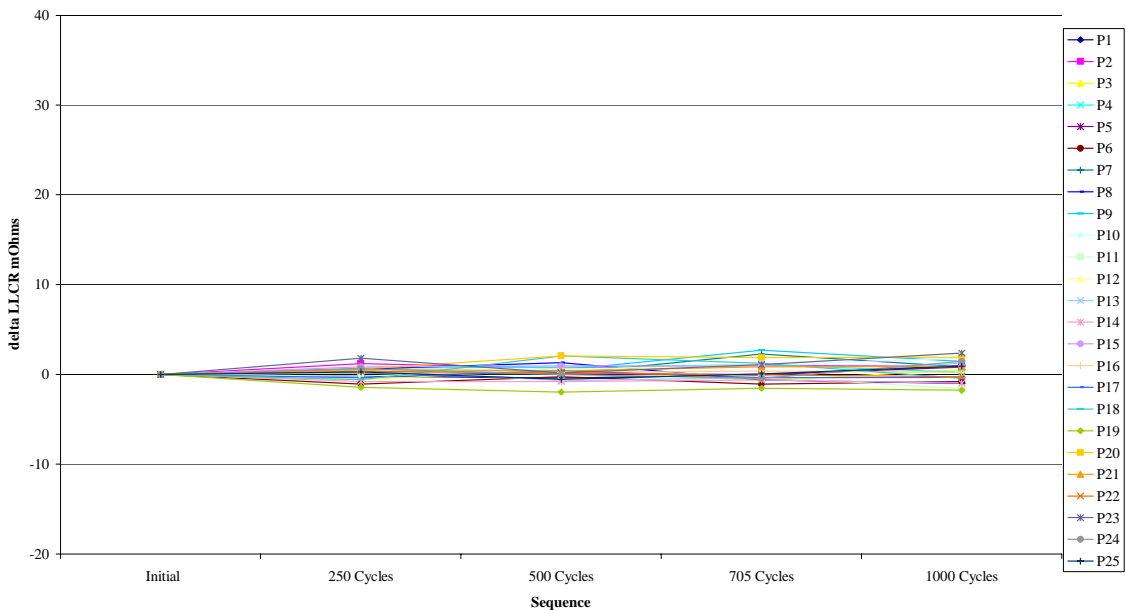
Project Number: NA		Tracking Code: 0202--0592		
Requested by: Eric Schrimper		Date: 1/11/02	Product Rev: NA	
Part #: QTE/QSE-100-01-L-D-A	Lot #: NA	Tech: T. Cook	Eng: J. Tozier	
Part description: 0.8mm Centerline High Speed Connector			Qty to test: 20	
Test Start: 1/30/02	Test Completed: 2/27/02			

### SUPPLEMENTAL TEST, LLCR DURABILITY – Non-Lubricated

Board #1  
non-Lubricated



Board #2  
non-Lubricated

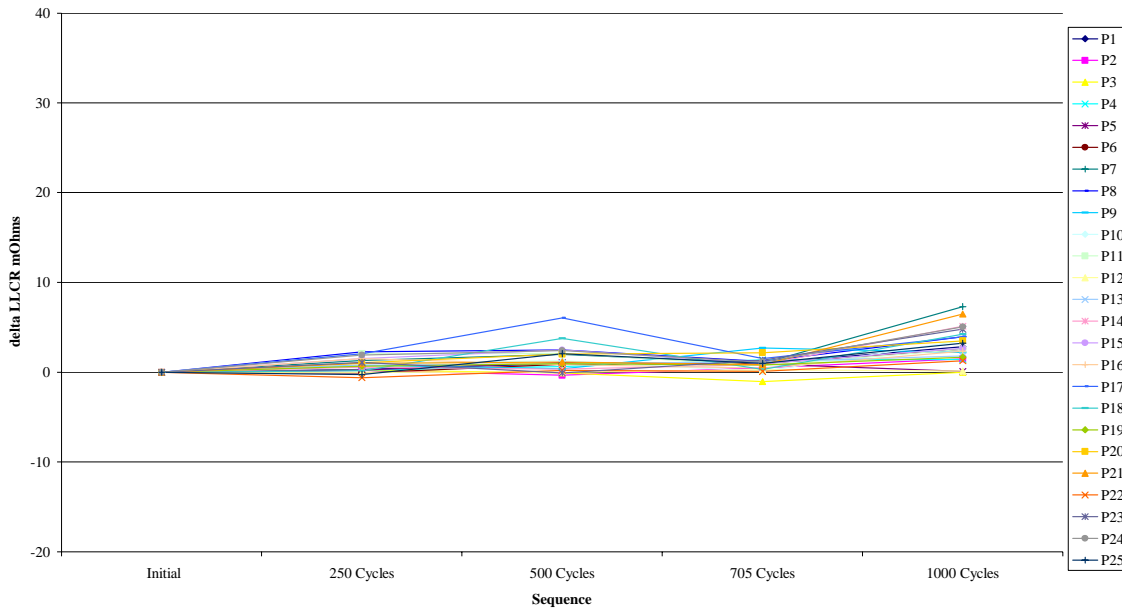




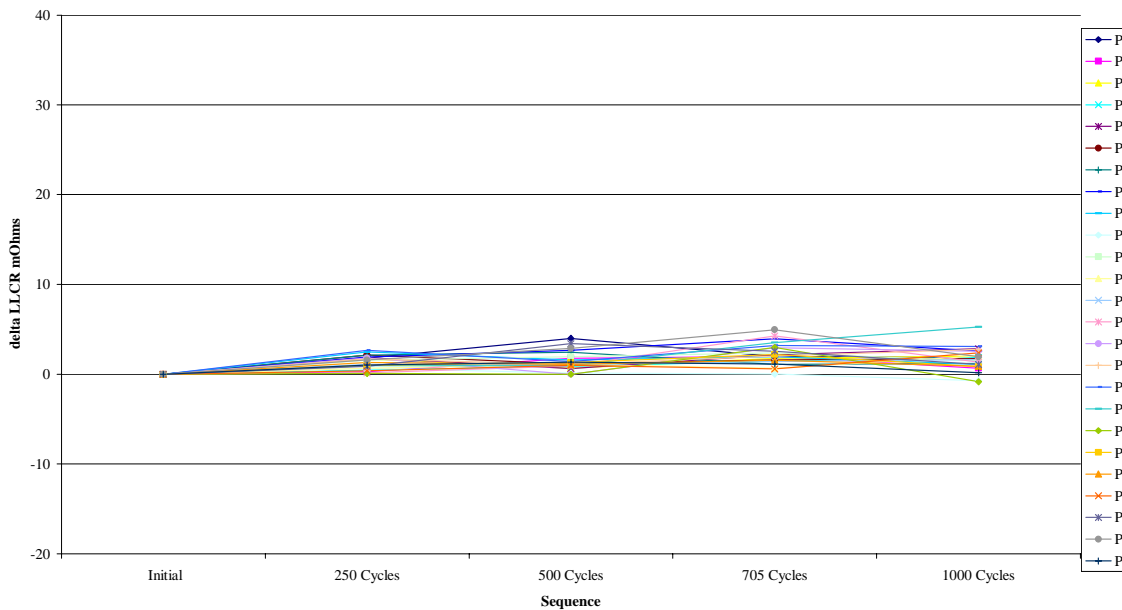
Project Number: NA		Tracking Code: 0202--0592			
Requested by: Eric Schrimper		Date: 1/11/02		Product Rev: NA	
Part #: QTE/QSE-100-01-L-D-A		Lot #: NA		Tech: T. Cook	Eng: J. Tozier
Part description: 0.8mm Centerline High Speed Connector					Qty to test: 20
Test Start: 1/30/02		Test Completed: 2/27/02			

### SUPPLEMENTAL TEST, LLCR DURABILITY – Non-Lubricated continued

Board #3  
non-Lubricated



Board #4  
non-Lubricated

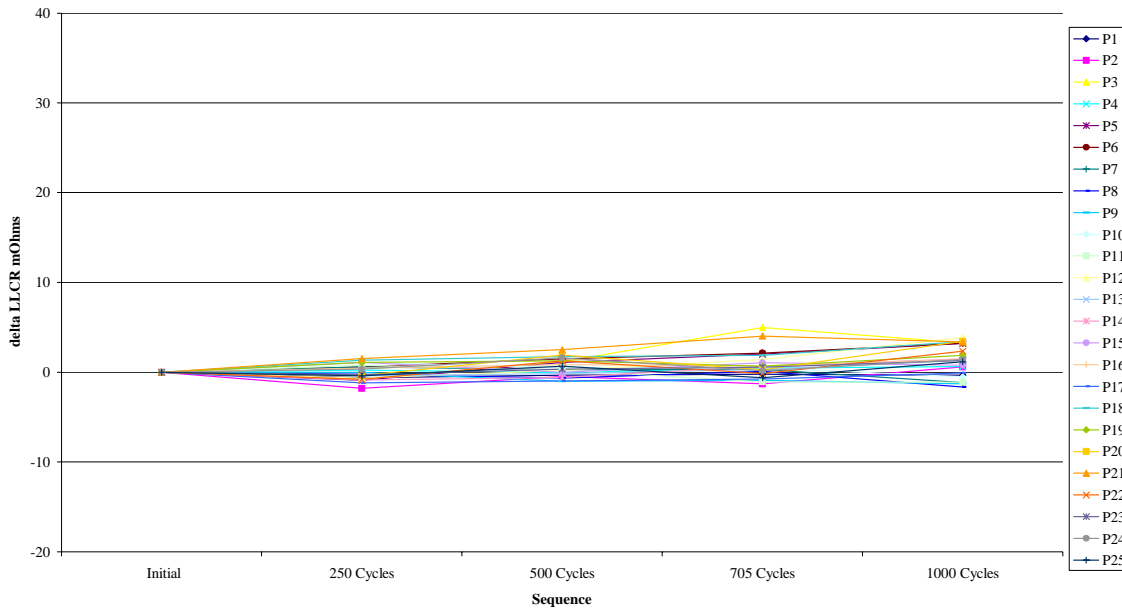




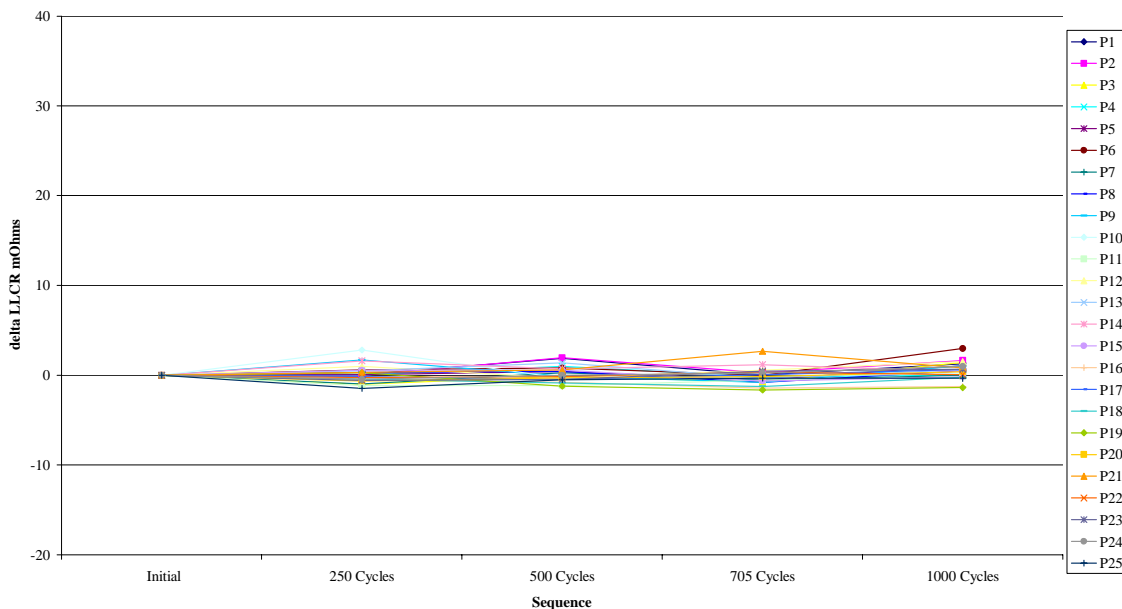
Project Number: NA		Tracking Code: 0202--0592		
Requested by: Eric Schrimper		Date: 1/11/02	Product Rev: NA	
Part #: QTE/QSE-100-01-L-D-A	Lot #: NA	Tech: T. Cook	Eng: J. Tozier	
Part description: 0.8mm Centerline High Speed Connector			Qty to test: 20	
Test Start: 1/30/02	Test Completed: 2/27/02			

### SUPPLEMENTAL TEST, LLCR DURABILITY – Non-Lubricated continued

Board #5  
non-Lubricated



Board #6  
non-Lubricated

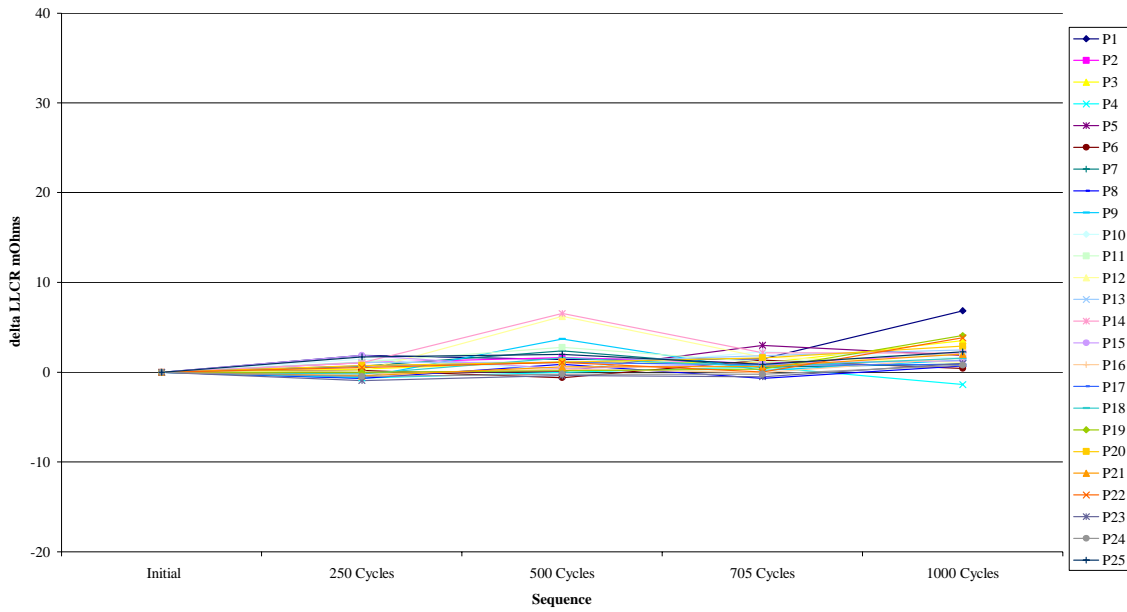




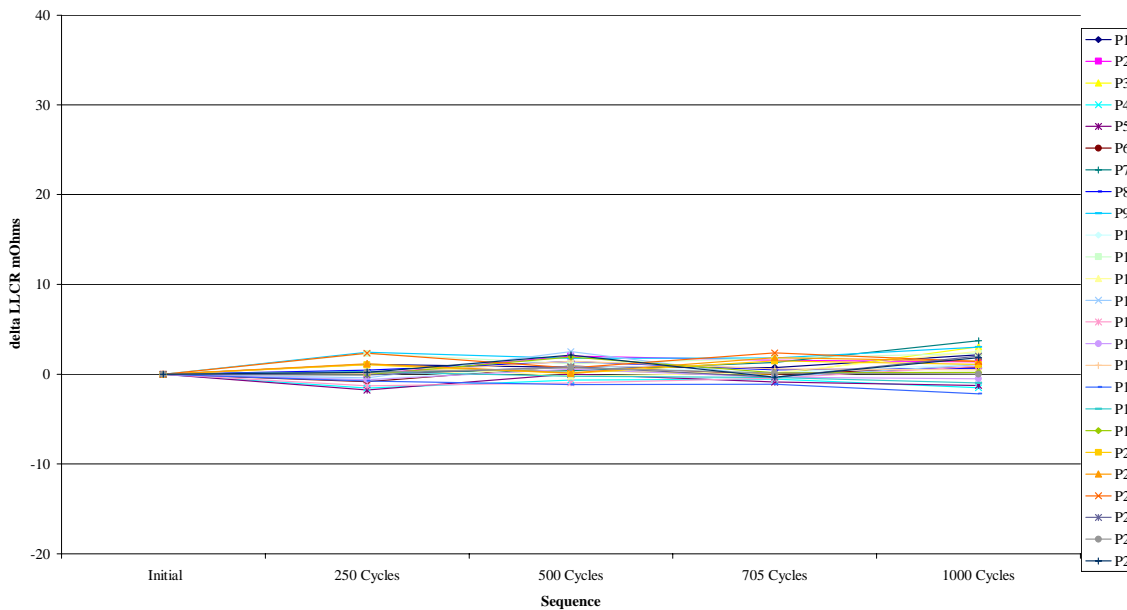
Project Number: NA		Tracking Code: 0202--0592		
Requested by: Eric Schrimper		Date: 1/11/02	Product Rev: NA	
Part #: QTE/QSE-100-01-L-D-A	Lot #: NA	Tech: T. Cook	Eng: J. Tozier	
Part description: 0.8mm Centerline High Speed Connector			Qty to test: 20	
Test Start: 1/30/02	Test Completed: 2/27/02			

**SUPPLEMENTAL TEST, LLCR DURABILITY – Non-Lubricated continued**

**Board #7  
non-Lubricated**



**Board #8  
non-Lubricated**





Project Number: NA		Tracking Code: 0202--0592			
Requested by: Eric Schrimper		Date: 1/11/02		Product Rev: NA	
Part #: QTE/QSE-100-01-L-D-A		Lot #: NA	Tech: T. Cook		Eng: J. Tozier
Part description: 0.8mm Centerline High Speed Connector				Qty to test: 20	
Test Start: 1/30/02		Test Completed: 2/27/02			

**SUPPLEMENTAL TEST, LLCR DURABILITY – Non-Lubricated**

Date	Jan. 30 2002	Jan. 30 2002	Feb. 04 2002	Feb. 14 2002	Feb. 18 2002
Room Temp C	22	23	23	24	21
RH	19%	20%	21%	20%	22%
Initials	T. C.	T. C.	T. C.	T. C.	G. L.
Count	200	200	200	200	200

mOhm values		Actual	Delta	Delta	Delta	Delta
Board	Position	Initial	250 Cycles	500 Cycles	705 Cycles	1000 Cycles
1	P1	24.4	-0.2	1.9	-0.3	1.4
1	P2	24.9	-0.9	-0.2	-0.6	0.1
1	P3	23.9	-0.8	-0.9	0.1	0.7
1	P4	23.7	-0.1	0.3	1.3	1.5
1	P5	23.1	0.6	-0.1	1.1	0.6
1	P6	22.9	-0.2	0.4	0.4	1.2
1	P7	23.0	-0.1	0.0	-0.1	3.3
1	P8	23.4	-0.2	-0.4	-1.2	0.3
1	P9	23.6	-0.5	0.8	0.4	1.2
1	P10	22.8	0.2	1.1	0.3	1.0
1	P11	23.0	-0.3	0.1	1.1	-0.1
1	P12	23.8	0.0	-0.3	-0.5	0.4
1	P13	24.3	-1.6	-0.3	-1.8	-0.1
1	P14	22.4	0.5	2.2	1.0	0.8
1	P15	23.0	-0.2	-0.1	0.3	0.1
1	P16	23.7	-0.2	-0.1	-0.2	0.2
1	P17	23.4	-0.2	0.1	-0.9	0.4
1	P18	23.3	0.5	0.4	0.2	2.3
1	P19	22.8	1.4	-0.2	0.3	1.7
1	P20	22.5	1.5	1.1	2.0	1.9
1	P21	23.3	0.2	0.7	0.1	1.3
1	P22	22.4	0.1	1.5	0.5	1.7
1	P23	22.9	0.0	-0.5	-1.0	-0.1
1	P24	22.6	-0.2	1.2	-0.2	0.9
1	P25	22.5	0.1	0.5	0.1	1.8
2	P1	23.0	-0.2	-0.4	0.0	1.0
2	P2	22.8	1.2	0.7	1.0	0.9
2	P3	23.3	-0.6	0.6	-0.7	0.5
2	P4	22.4	0.7	0.8	1.1	0.3



Project Number: NA		Tracking Code: 0202--0592				
Requested by: Eric Schrimper		Date: 1/11/02		Product Rev: NA		
Part #: QTE/QSE-100-01-L-D-A		Lot #: NA		Tech: T. Cook		Eng: J. Tozier
Part description: 0.8mm Centerline High Speed Connector					Qty to test: 20	
Test Start: 1/30/02		Test Completed: 2/27/02				

2	P5	22.6	0.2	0.1	0.0	0.8
2	P6	24.2	-1.1	-0.3	-1.1	-0.8
2	P7	23.1	0.1	0.1	2.3	0.9
2	P8	24.4	0.6	1.3	-0.6	-1.0
2	P9	22.2	0.3	0.5	2.7	1.4
2	P10	22.8	-0.2	0.6	1.1	1.8
2	P11	24.2	0.2	0.7	-0.3	-1.6
2	P12	22.6	0.4	0.5	1.1	2.4
2	P13	23.3	0.5	-0.7	-0.4	1.3
2	P14	24.1	-0.8	-0.8	-0.6	-1.0
2	P15	23.9	0.9	0.9	0.9	0.9
2	P16	22.8	0.2	0.2	0.4	0.3
2	P17	23.3	-0.4	0.4	-0.4	-0.3
2	P18	23.8	-0.6	2.1	1.2	-0.5
2	P19	25.0	-1.4	-2.0	-1.5	-1.8
2	P20	23.1	0.6	2.1	1.9	1.9
2	P21	22.9	0.5	0.4	0.9	0.9
2	P22	23.8	0.3	0.2	0.0	-0.2
2	P23	23.2	1.8	0.2	1.1	2.4
2	P24	24.0	0.6	0.0	-0.5	1.4
2	P25	23.2	0.3	-0.5	0.0	0.9
3	P1	21.9	0.3	1.0	1.0	2.9
3	P2	23.2	0.2	-0.4	0.5	1.5
3	P3	22.8	0.2	-0.1	-1.0	0.0
3	P4	21.8	0.3	0.6	1.4	1.4
3	P5	22.2	0.3	1.1	0.9	0.1
3	P6	22.1	-0.1	0.9	1.0	2.6
3	P7	20.8	1.3	2.0	1.0	7.3
3	P8	20.7	2.3	2.5	1.2	4.0
3	P9	21.5	0.8	0.4	2.7	2.2
3	P10	21.4	0.9	1.3	0.1	3.5
3	P11	21.8	2.1	2.1	0.8	2.6
3	P12	22.2	0.0	0.0	0.3	0.1
3	P13	21.5	0.8	1.0	1.2	1.8
3	P14	22.3	0.6	0.3	0.8	5.1
3	P15	21.6	1.5	2.5	1.0	2.7
3	P16	21.5	1.5	0.8	0.4	2.3
3	P17	21.3	2.1	6.1	1.5	3.9



Project Number: NA		Tracking Code: 0202--0592					
Requested by: Eric Schrimper			Date: 1/11/02		Product Rev: NA		
Part #: QTE/QSE-100-01-L-D-A		Lot #: NA		Tech: T. Cook		Eng: J. Tozier	
Part description: 0.8mm Centerline High Speed Connector						Qty to test: 20	
Test Start: 1/30/02		Test Completed: 2/27/02					

3	P18	21.3	0.2	3.8	0.3	4.2
3	P19	21.3	0.7	1.0	0.8	1.7
3	P20	22.0	1.0	2.0	2.2	3.5
3	P21	21.3	1.0	1.1	0.9	6.5
3	P22	22.2	-0.6	0.2	0.1	1.3
3	P23	22.1	1.1	-0.1	1.4	4.8
3	P24	21.5	1.9	2.4	1.1	5.1
3	P25	21.6	-0.3	2.1	1.0	3.2
4	P1	21.0	1.8	4.0	2.0	1.9
4	P2	21.2	0.3	1.8	2.0	0.7
4	P3	21.3	1.7	0.7	1.8	2.0
4	P4	21.8	0.5	0.9	1.4	1.9
4	P5	21.3	1.8	0.6	2.2	2.8
4	P6	21.8	2.2	1.1	1.6	1.8
4	P7	21.5	2.2	2.5	1.1	1.2
4	P8	21.3	1.9	2.7	4.0	2.6
4	P9	21.4	2.5	1.6	1.9	1.1
4	P10	22.4	0.7	0.1	0.0	-0.7
4	P11	21.7	1.5	1.9	2.4	1.5
4	P12	21.7	0.7	1.1	0.7	2.0
4	P13	21.8	1.1	1.1	1.4	1.6
4	P14	21.9	0.2	0.9	4.3	1.4
4	P15	22.5	1.8	0.0	2.9	2.6
4	P16	21.3	1.7	1.1	2.0	2.8
4	P17	21.5	2.7	1.4	3.2	3.1
4	P18	21.6	1.0	1.0	3.5	5.3
4	P19	23.3	0.1	0.0	3.0	-0.8
4	P20	22.4	1.0	1.3	2.2	0.8
4	P21	22.4	1.3	1.1	1.5	0.9
4	P22	22.2	0.4	1.0	0.6	2.4
4	P23	22.8	0.9	3.4	2.6	1.1
4	P24	22.5	1.6	2.9	5.0	1.9
4	P25	22.7	1.0	1.4	1.1	0.1
5	P1	23.9	-0.6	-0.4	-0.2	-0.4
5	P2	24.8	-1.8	-0.5	-1.3	0.6
5	P3	23.0	-0.8	1.2	5.0	3.3
5	P4	22.4	0.3	0.0	0.5	0.6
5	P5	23.6	-0.9	1.1	2.0	3.2



Project Number: NA		Tracking Code: 0202--0592				
Requested by: Eric Schrimper		Date: 1/11/02		Product Rev: NA		
Part #: QTE/QSE-100-01-L-D-A		Lot #: NA		Tech: T. Cook		Eng: J. Tozier
Part description: 0.8mm Centerline High Speed Connector					Qty to test: 20	
Test Start: 1/30/02		Test Completed: 2/27/02				

5	P6	22.9	0.6	1.5	2.1	3.2
5	P7	22.1	0.6	0.3	0.3	-1.1
5	P8	22.4	-0.2	-0.7	0.1	-1.6
5	P9	23.1	0.0	-1.0	-0.9	-1.3
5	P10	21.9	1.0	0.5	0.5	-0.5
5	P11	22.5	0.8	0.3	-1.1	-1.1
5	P12	22.4	-0.7	0.2	1.4	3.9
5	P13	22.1	-0.4	-0.1	0.3	1.3
5	P14	23.1	-0.9	-0.6	0.7	1.5
5	P15	22.2	1.1	0.0	1.1	0.8
5	P16	22.5	0.4	0.8	0.7	1.4
5	P17	23.6	-1.2	-1.0	-0.7	-0.1
5	P18	22.3	1.3	1.7	1.9	3.4
5	P19	22.6	1.1	1.3	0.7	1.9
5	P20	22.5	-0.4	1.9	0.3	3.4
5	P21	21.9	1.5	2.5	4.0	3.4
5	P22	23.1	-0.8	1.3	-0.2	2.3
5	P23	21.9	-0.3	0.3	0.6	1.3
5	P24	22.1	0.4	1.6	0.1	1.4
5	P25	23.7	-0.4	0.7	-0.6	1.2
6	P1	22.9	0.0	1.9	0.0	1.3
6	P2	22.1	0.0	1.9	0.3	1.6
6	P3	23.1	-1.0	-0.1	-0.7	1.4
6	P4	22.1	0.0	1.0	-0.2	0.0
6	P5	22.9	0.0	0.4	-0.5	1.1
6	P6	22.5	0.6	0.8	0.0	3.0
6	P7	23.7	-1.0	0.3	-0.6	0.0
6	P8	23.6	0.3	0.4	-0.8	0.5
6	P9	23.1	1.7	-0.1	-0.8	1.0
6	P10	23.0	2.8	-0.3	-0.1	0.1
6	P11	23.7	-1.2	-1.1	-0.6	-0.2
6	P12	22.7	1.0	-0.3	0.5	1.5
6	P13	22.5	0.5	1.4	-0.3	0.6
6	P14	22.5	1.6	0.7	1.2	0.4
6	P15	22.8	0.5	0.5	-0.6	-0.2
6	P16	23.7	-0.5	-0.8	-1.4	-1.3
6	P17	23.3	-0.2	-0.5	0.1	0.6
6	P18	23.6	-0.4	-0.9	-1.2	-0.2



Project Number: NA		Tracking Code: 0202--0592					
Requested by: Eric Schrimper			Date: 1/11/02		Product Rev: NA		
Part #: QTE/QSE-100-01-L-D-A		Lot #: NA		Tech: T. Cook		Eng: J. Tozier	
Part description: 0.8mm Centerline High Speed Connector						Qty to test: 20	
Test Start: 1/30/02		Test Completed: 2/27/02					

6	P19	23.7	0.3	-1.2	-1.6	-1.4
6	P20	23.6	-0.6	-0.3	-0.1	0.4
6	P21	22.7	0.3	0.6	2.7	0.8
6	P22	23.5	-0.3	-0.2	0.3	0.1
6	P23	23.0	-0.6	-0.5	0.4	0.7
6	P24	22.6	-0.4	0.0	0.3	1.0
6	P25	24.2	-1.5	-0.5	-0.3	-0.3
7	P1	23.3	1.9	1.4	1.5	6.8
7	P2	21.9	1.1	1.7	1.0	2.1
7	P3	21.9	0.4	1.2	1.0	3.5
7	P4	23.2	-0.6	0.0	0.6	-1.4
7	P5	22.5	0.0	0.1	3.0	1.9
7	P6	22.8	0.2	-0.6	1.4	0.4
7	P7	21.7	0.7	2.4	0.5	0.9
7	P8	22.3	-0.7	0.9	-0.7	0.7
7	P9	22.7	-0.6	3.7	0.2	1.3
7	P10	21.4	1.5	0.4	2.3	1.6
7	P11	21.3	1.2	2.8	1.2	2.1
7	P12	22.7	0.2	6.2	1.7	1.1
7	P13	21.3	1.1	1.1	1.8	2.5
7	P14	21.8	1.1	6.5	2.2	2.2
7	P15	21.5	1.9	0.4	1.0	1.3
7	P16	22.3	-0.2	0.3	0.0	1.6
7	P17	21.2	0.7	1.1	0.8	0.9
7	P18	21.4	-0.2	1.6	0.7	1.5
7	P19	21.4	0.0	0.2	0.4	4.1
7	P20	21.3	0.8	1.2	1.6	2.9
7	P21	22.0	-0.4	0.6	0.6	2.0
7	P22	21.7	0.5	1.1	0.0	3.8
7	P23	22.5	-1.0	-0.4	-0.5	1.0
7	P24	22.6	-0.5	-0.2	-0.2	0.8
7	P25	21.5	1.7	2.0	0.9	2.3
8	P1	22.0	1.1	0.8	0.8	2.2
8	P2	22.2	0.0	2.0	1.5	1.4
8	P3	22.6	0.1	0.4	0.0	3.1
8	P4	23.6	-1.5	-0.7	-0.5	-1.5
8	P5	23.2	-1.8	0.0	-0.9	-1.2
8	P6	22.8	-0.8	0.9	0.0	0.8



Project Number: NA		Tracking Code: 0202--0592					
Requested by: Eric Schrimper			Date: 1/11/02		Product Rev: NA		
Part #: QTE/QSE-100-01-L-D-A		Lot #: NA		Tech: T. Cook		Eng: J. Tozier	
Part description: 0.8mm Centerline High Speed Connector						Qty to test: 20	
Test Start: 1/30/02		Test Completed: 2/27/02					

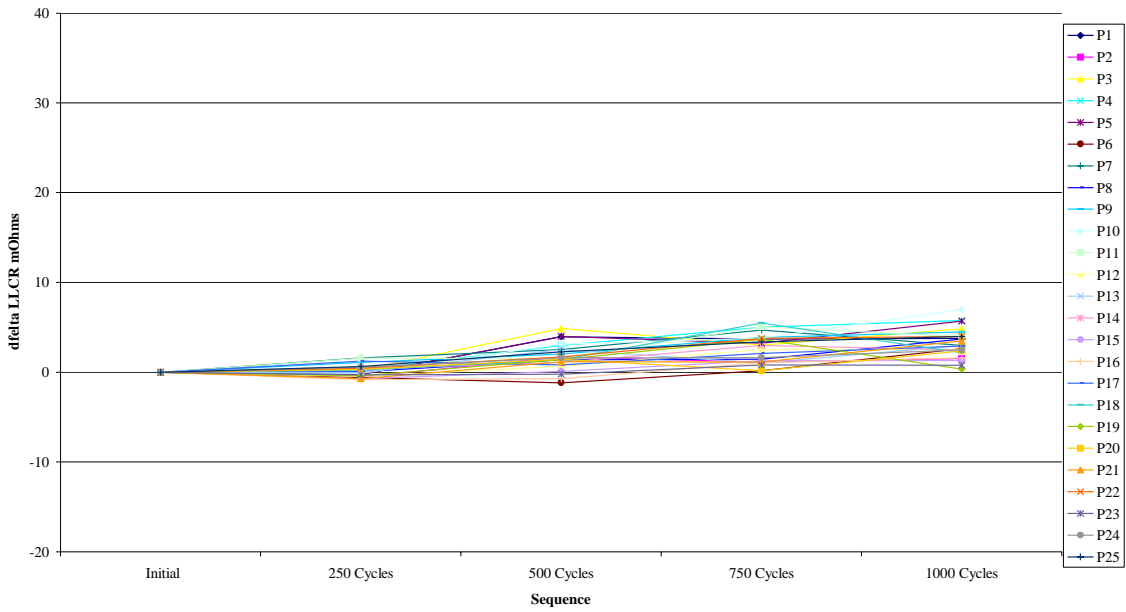
8	P7	22.4	0.3	0.4	1.3	3.7
8	P8	22.7	0.4	1.4	0.5	0.7
8	P9	21.5	2.4	1.8	1.8	3.0
8	P10	22.1	-0.6	0.9	0.2	1.2
8	P11	21.7	2.3	1.2	1.8	2.3
8	P12	22.8	1.0	-0.2	0.1	2.6
8	P13	23.1	-0.4	2.5	-0.3	1.1
8	P14	22.9	-1.3	-1.0	-0.4	0.9
8	P15	22.9	-0.6	0.6	-0.3	-0.5
8	P16	22.6	0.0	1.5	0.6	0.5
8	P17	24.2	-0.7	-1.1	-1.1	-2.2
8	P18	22.4	0.3	-0.2	-0.4	-1.0
8	P19	22.1	0.0	1.9	0.2	0.2
8	P20	23.3	1.1	0.1	1.5	1.1
8	P21	22.4	1.2	0.1	1.8	1.5
8	P22	21.9	2.3	0.7	2.4	1.4
8	P23	23.2	-0.1	0.9	-0.3	2.0
8	P24	22.6	0.2	0.7	0.1	0.0
8	P25	22.3	0.2	2.1	-0.3	1.8



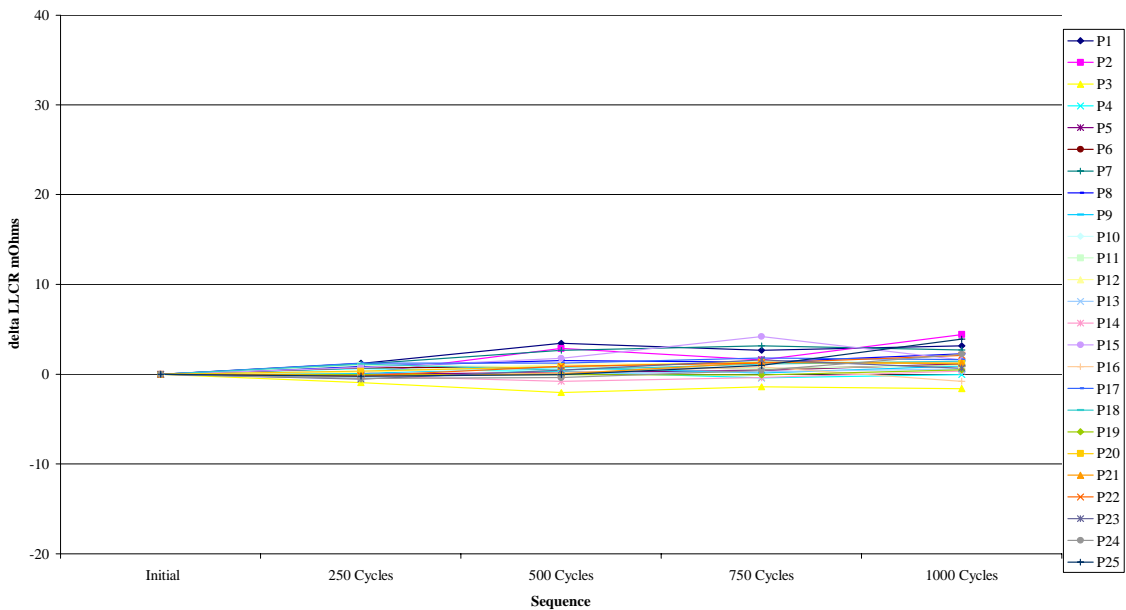
Project Number: NA		Tracking Code: 0202--0592		
Requested by: Eric Schrimper		Date: 1/11/02	Product Rev: NA	
Part #: QTE/QSE-100-01-L-D-A	Lot #: NA	Tech: T. Cook	Eng: J. Tozier	
Part description: 0.8mm Centerline High Speed Connector			Qty to test: 20	
Test Start: 1/30/02	Test Completed: 2/27/02			

### SUPPLEMENTAL TEST, LLCR DURABILITY – Lubricated

**Board #1  
Lubricated**



**Board #2  
Lubricated**

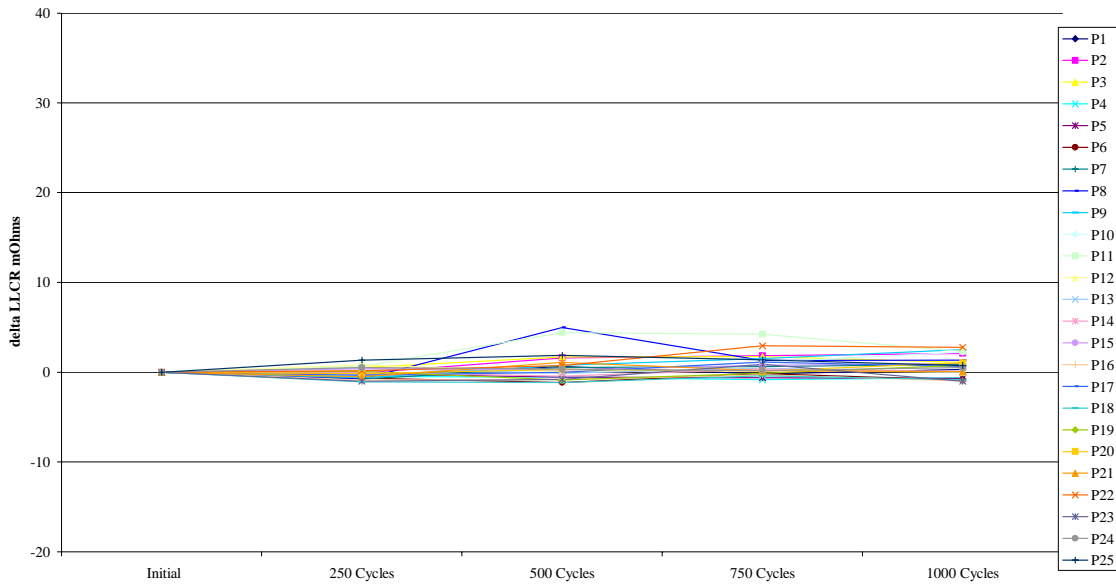




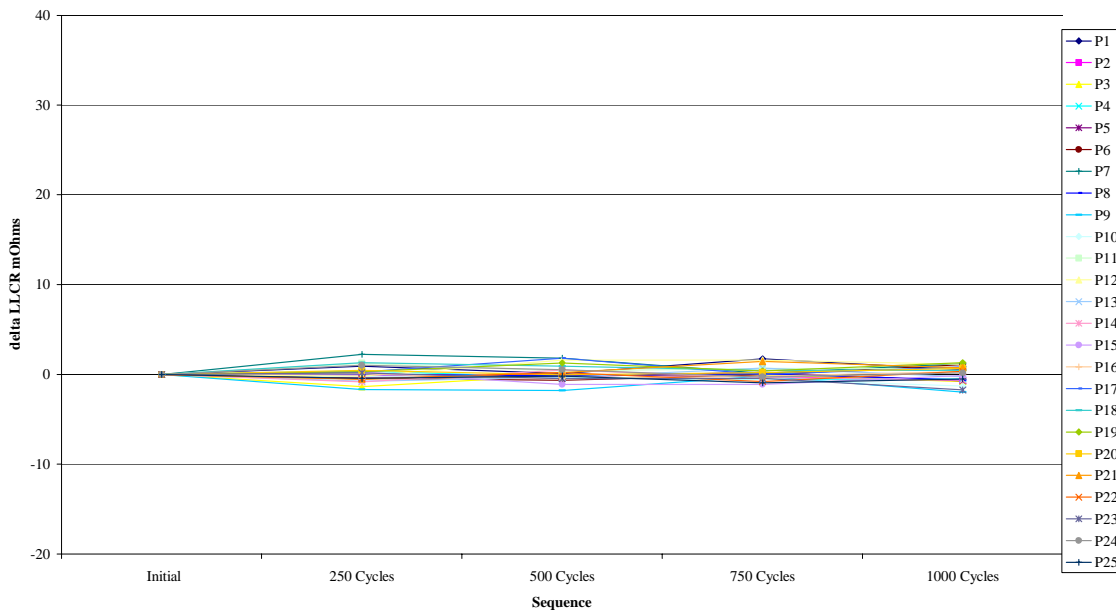
Project Number: NA		Tracking Code: 0202--0592			
Requested by: Eric Schrimper		Date: 1/11/02		Product Rev: NA	
Part #: QTE/QSE-100-01-L-D-A		Lot #: NA		Tech: T. Cook	
Part description: 0.8mm Centerline High Speed Connector		Eng: J. Tozier			
Test Start: 1/30/02		Test Completed: 2/27/02			

**SUPPLEMENTAL TEST, LLCR DURABILITY – Lubricated continued**

Board #3  
Lubricated



Board #4  
Lubricated

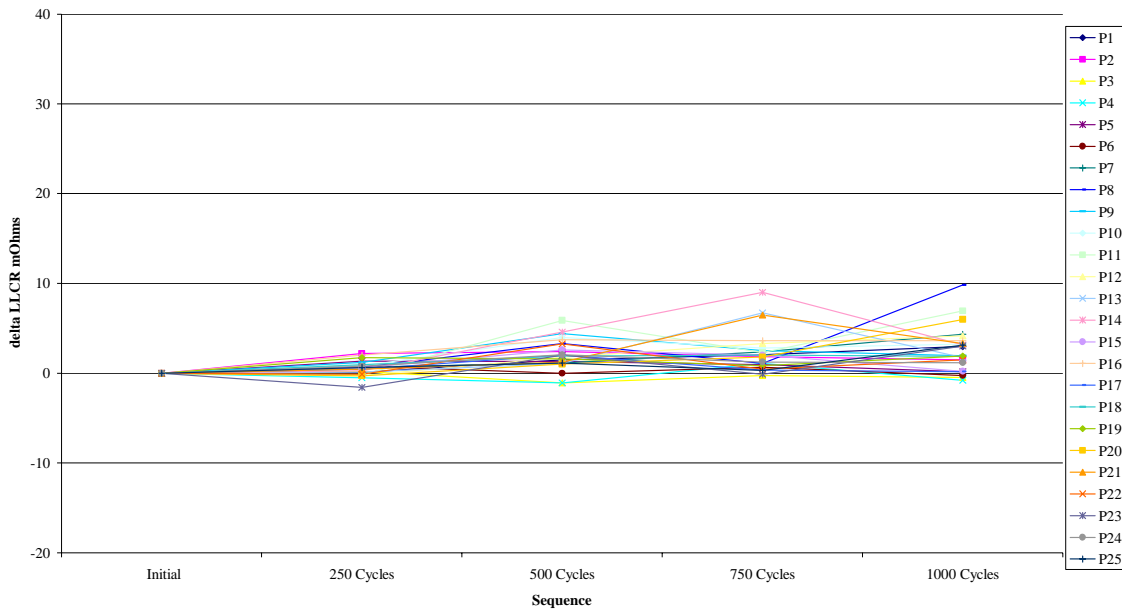




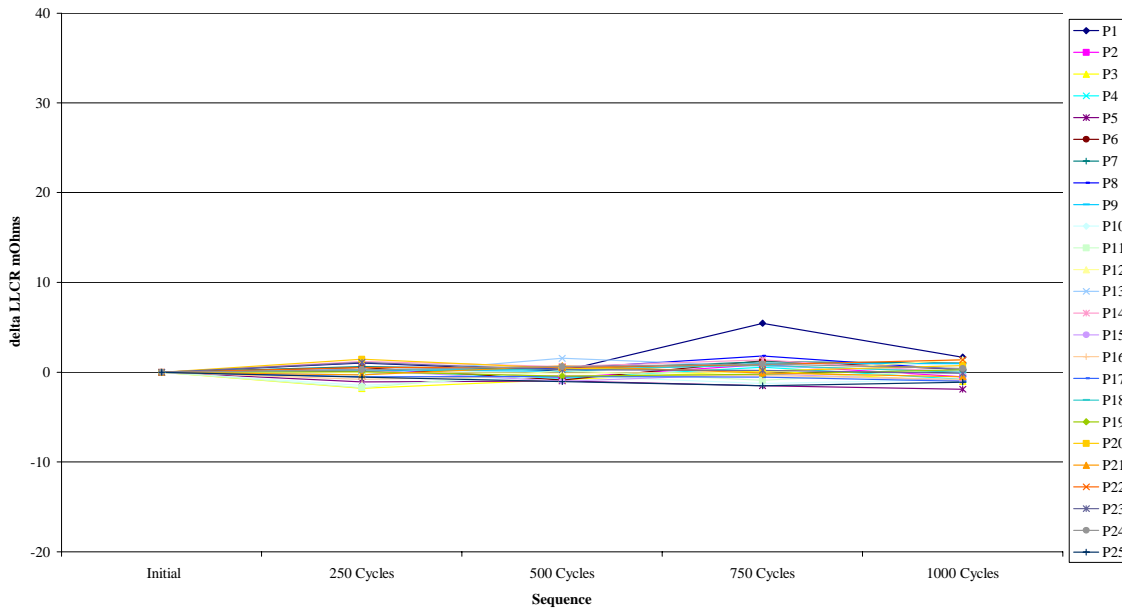
Project Number: NA		Tracking Code: 0202--0592		
Requested by: Eric Schrimper		Date: 1/11/02	Product Rev: NA	
Part #: QTE/QSE-100-01-L-D-A	Lot #: NA	Tech: T. Cook	Eng: J. Tozier	
Part description: 0.8mm Centerline High Speed Connector			Qty to test: 20	
Test Start: 1/30/02	Test Completed: 2/27/02			

### SUPPLEMENTAL TEST, LLCR DURABILITY – Lubricated continued

**Board #5  
Lubricated**



**Board #6  
Lubricated**

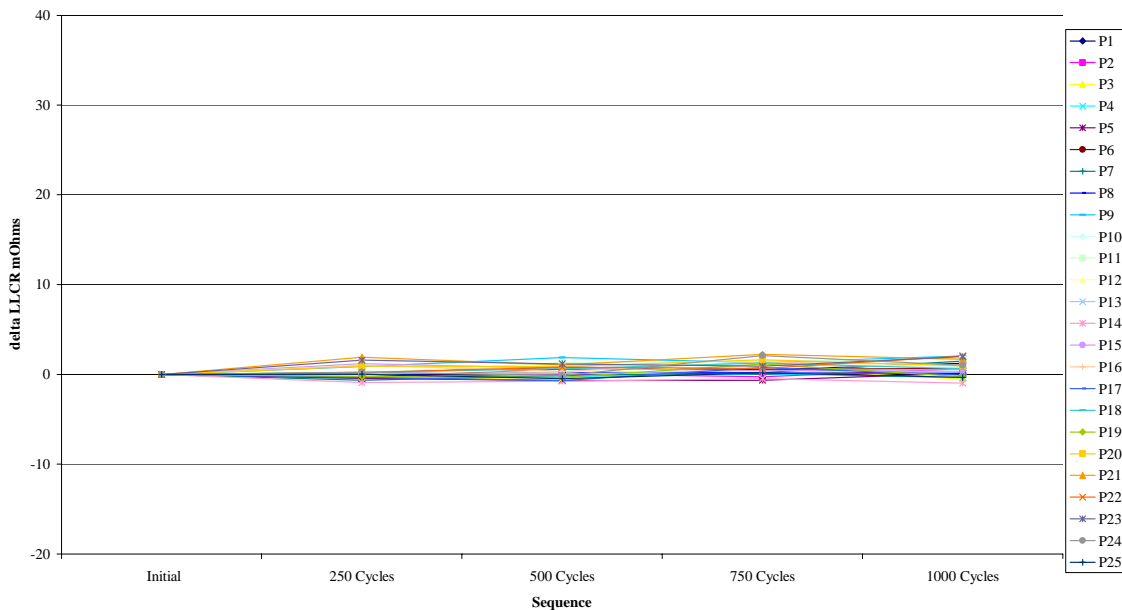
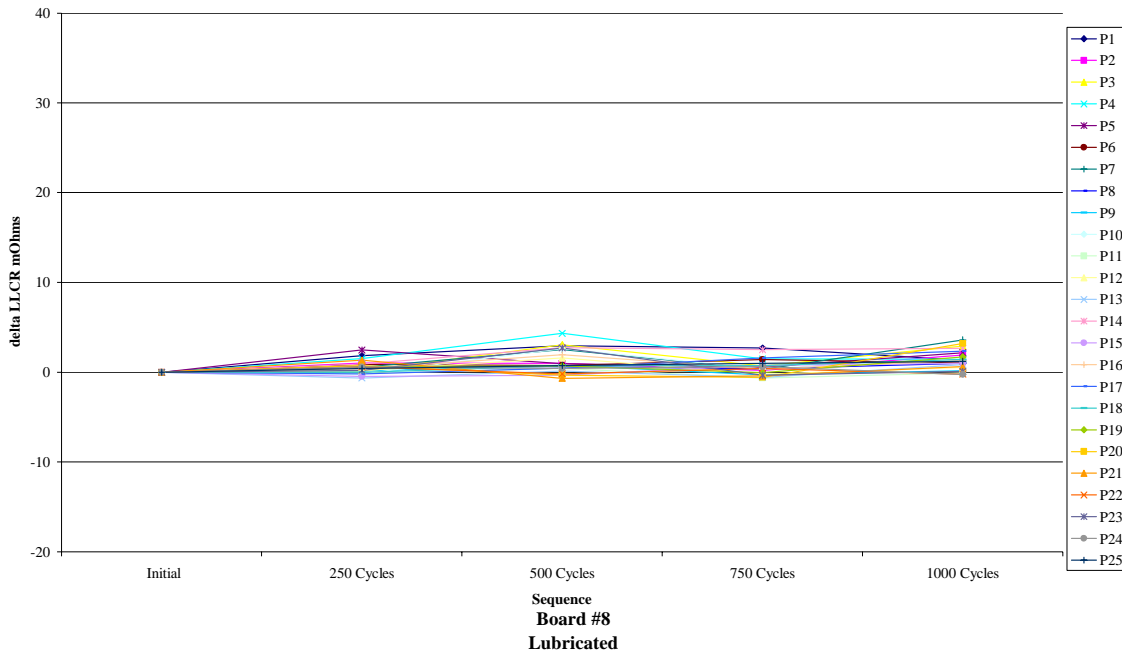




Project Number: NA		Tracking Code: 0202--0592		
Requested by: Eric Schrimper		Date: 1/11/02	Product Rev: NA	
Part #: QTE/QSE-100-01-L-D-A	Lot #: NA	Tech: T. Cook	Eng: J. Tozier	
Part description: 0.8mm Centerline High Speed Connector			Qty to test: 20	
Test Start: 1/30/02	Test Completed: 2/27/02			

**SUPPLEMENTAL TEST, LLCR DURABILITY – Lubricated continued**

Board #7  
Lubricated





Project Number: NA		Tracking Code: 0202--0592			
Requested by: Eric Schrimper		Date: 1/11/02		Product Rev: NA	
Part #: QTE/QSE-100-01-L-D-A		Lot #: NA	Tech: T. Cook		Eng: J. Tozier
Part description: 0.8mm Centerline High Speed Connector				Qty to test: 20	
Test Start: 1/30/02		Test Completed: 2/27/02			

### SUPPLEMENTAL TEST, LLCR DURABILITY – Lubricated

Date	Jan. 30 2002	Jan. 31 2002	Feb. 04 2002	Feb. 14 2002	Feb. 18 2002
Room Temp C	22	23	23	24	24
RH	19%	20%	21%	20%	20%
Initials	T. C.	T. C.	T. C.	T. C.	G. L.
Count	200	200	200	200	200

mOhm values		Actual	Delta	Delta	Delta	Delta
Board	Position	Initial	250 Cycles	500 Cycles	750 Cycles	1000 Cycles
1	P1	22.3	-0.2	4.0	3.7	3.8
1	P2	22.9	-0.5	1.7	1.2	1.5
1	P3	21.5	0.3	4.9	3.0	4.8
1	P4	22.0	0.2	3.0	5.0	5.8
1	P5	23.0	-0.2	4.0	3.3	5.7
1	P6	22.7	-0.6	-1.2	0.2	2.6
1	P7	20.7	1.6	2.5	4.7	3.0
1	P8	21.5	0.1	1.4	1.4	3.7
1	P9	21.7	1.1	2.0	3.9	4.5
1	P10	21.4	-0.1	3.2	3.8	7.0
1	P11	20.8	1.6	1.5	5.0	4.0
1	P12	22.2	-0.5	0.7	2.5	2.5
1	P13	22.2	0.0	2.5	1.0	3.0
1	P14	21.9	0.4	1.1	3.0	2.5
1	P15	22.2	-0.7	0.1	1.3	1.3
1	P16	22.3	-0.8	-0.7	1.1	1.6
1	P17	20.8	1.2	0.8	2.1	2.9
1	P18	21.2	0.3	1.4	5.5	2.2
1	P19	22.0	-0.4	1.4	3.7	0.3
1	P20	21.7	0.3	1.4	0.2	2.4
1	P21	21.9	-0.7	1.2	1.1	3.5
1	P22	20.8	0.5	1.7	3.8	4.0
1	P23	21.8	-0.3	-0.2	0.8	0.8
1	P24	21.3	0.6	1.6	1.7	2.5
1	P25	21.1	0.7	2.3	3.4	4.0
2	P1	20.9	1.2	3.4	2.7	3.2
2	P2	21.8	0.1	2.9	1.6	4.4
2	P3	23.1	-0.9	-2.0	-1.4	-1.6
2	P4	21.8	0.7	0.3	-0.4	0.0



Project Number: NA		Tracking Code: 0202--0592				
Requested by: Eric Schrimper		Date: 1/11/02		Product Rev: NA		
Part #: QTE/QSE-100-01-L-D-A		Lot #: NA		Tech: T. Cook		Eng: J. Tozier
Part description: 0.8mm Centerline High Speed Connector					Qty to test: 20	
Test Start: 1/30/02		Test Completed: 2/27/02				

2	P5	22.5	0.0	0.2	0.4	1.2
2	P6	21.6	0.7	0.9	0.6	1.0
2	P7	21.3	1.1	2.7	3.2	2.7
2	P8	21.3	0.9	1.5	1.3	2.3
2	P9	22.4	0.1	0.8	0.1	0.9
2	P10	21.4	0.3	0.6	1.4	1.4
2	P11	21.8	1.0	0.9	0.6	1.0
2	P12	22.0	0.2	1.1	1.3	1.4
2	P13	22.6	-0.3	0.0	0.3	0.6
2	P14	22.6	-0.2	-0.8	-0.4	0.4
2	P15	21.7	0.7	1.8	4.2	1.6
2	P16	22.4	-0.2	0.2	0.8	-0.8
2	P17	21.5	1.2	1.2	1.8	1.7
2	P18	22.4	1.2	0.5	1.1	1.4
2	P19	22.3	0.0	0.0	-0.1	0.5
2	P20	22.4	0.4	0.8	1.3	1.2
2	P21	22.7	-0.1	0.0	1.3	1.2
2	P22	22.2	-0.2	0.9	1.2	2.1
2	P23	22.0	-0.6	0.5	1.6	0.7
2	P24	22.8	-0.5	-0.4	0.4	2.2
2	P25	22.4	-0.2	0.0	1.0	3.9
3	P1	23.2	-0.3	0.6	-0.2	0.3
3	P2	23.4	-0.1	1.6	1.8	2.1
3	P3	22.9	0.5	1.7	1.7	1.1
3	P4	23.1	-0.5	-0.5	-0.8	-0.6
3	P5	24.1	-0.2	-0.5	-0.6	-0.7
3	P6	23.3	-0.6	-1.1	-0.1	-0.9
3	P7	21.7	-0.7	0.5	0.6	0.9
3	P8	23.5	-0.7	5.0	1.3	1.3
3	P9	22.5	-0.6	0.8	1.5	2.5
3	P10	23.6	-0.4	0.0	1.1	2.2
3	P11	23.2	0.7	4.4	4.2	2.3
3	P12	22.6	0.8	0.1	0.3	0.0
3	P13	22.4	0.4	-0.1	0.5	0.0
3	P14	22.7	0.0	-0.5	0.3	0.1
3	P15	22.7	0.4	0.2	0.8	1.0
3	P16	23.9	-0.9	-0.8	-0.3	-1.0
3	P17	23.0	-0.3	0.0	1.1	0.6



Project Number: NA		Tracking Code: 0202--0592					
Requested by: Eric Schrimper			Date: 1/11/02		Product Rev: NA		
Part #: QTE/QSE-100-01-L-D-A		Lot #: NA		Tech: T. Cook		Eng: J. Tozier	
Part description: 0.8mm Centerline High Speed Connector						Qty to test: 20	
Test Start: 1/30/02		Test Completed: 2/27/02					

3	P18	23.2	-1.1	-1.2	-0.4	-0.9
3	P19	23.0	0.1	-0.9	-0.1	0.8
3	P20	22.9	-0.2	0.3	0.1	1.0
3	P21	23.3	-0.5	1.1	0.1	0.0
3	P22	22.9	0.2	0.8	2.9	2.8
3	P23	24.0	-1.0	-0.8	0.9	-1.0
3	P24	22.2	0.5	0.3	0.2	0.5
3	P25	21.8	1.3	1.9	1.4	0.7
4	P1	22.8	0.9	0.1	1.7	0.5
4	P2	23.1	-0.1	0.0	-0.2	-0.7
4	P3	22.6	-1.4	-0.1	-0.1	-0.8
4	P4	22.9	0.4	-0.4	-0.5	-0.5
4	P5	23.2	-0.3	-0.3	0.3	-0.7
4	P6	22.7	-0.4	-0.7	0.0	1.1
4	P7	22.4	2.2	1.8	0.1	1.2
4	P8	23.4	0.0	-0.2	0.0	-0.6
4	P9	24.7	-1.7	-1.8	-0.2	-2.0
4	P10	23.3	-0.2	-0.3	-0.5	-1.3
4	P11	23.1	1.3	0.4	0.7	0.6
4	P12	22.0	-0.2	1.6	1.6	1.2
4	P13	23.0	-0.7	-0.3	0.7	-0.2
4	P14	23.3	-0.8	0.5	-0.3	-0.6
4	P15	24.8	0.3	-1.1	-1.1	-0.1
4	P16	23.2	0.0	-0.5	-0.2	0.3
4	P17	22.9	0.3	1.8	0.0	0.8
4	P18	22.6	1.3	0.9	0.5	0.5
4	P19	22.4	0.3	1.3	0.4	1.3
4	P20	23.8	0.4	0.0	0.2	0.7
4	P21	23.4	-0.5	0.2	1.5	0.8
4	P22	23.5	-0.5	0.2	-0.8	0.3
4	P23	24.5	0.2	-0.5	-0.4	-1.8
4	P24	23.5	1.0	0.5	-0.3	0.1
4	P25	23.3	-0.5	-0.2	-0.9	-0.5
5	P1	22.8	0.1	1.5	2.1	3.0
5	P2	22.9	2.2	2.4	1.8	1.5
5	P3	22.8	0.2	-1.1	-0.2	-0.5
5	P4	22.5	-0.5	-1.1	1.1	-0.8
5	P5	21.9	1.3	1.3	0.9	0.2



Project Number: NA		Tracking Code: 0202--0592				
Requested by: Eric Schrimper		Date: 1/11/02		Product Rev: NA		
Part #: QTE/QSE-100-01-L-D-A		Lot #: NA		Tech: T. Cook		Eng: J. Tozier
Part description: 0.8mm Centerline High Speed Connector					Qty to test: 20	
Test Start: 1/30/02		Test Completed: 2/27/02				

5	P6	21.3	0.8	0.0	0.7	-0.2
5	P7	20.9	0.7	1.1	2.4	4.3
5	P8	21.7	0.7	3.3	1.1	9.8
5	P9	22.3	1.2	4.4	2.5	2.0
5	P10	21.5	0.8	4.0	2.8	3.2
5	P11	22.6	-0.2	5.9	2.3	7.0
5	P12	22.9	-0.2	1.8	3.3	4.2
5	P13	22.0	0.1	1.1	6.7	1.8
5	P14	22.5	0.3	4.6	9.0	3.2
5	P15	21.9	0.6	2.6	2.0	0.2
5	P16	22.5	2.0	3.7	3.6	3.6
5	P17	22.7	0.5	2.0	0.4	0.2
5	P18	22.7	1.0	1.9	2.0	1.9
5	P19	21.5	1.8	1.6	0.8	1.9
5	P20	22.6	-0.3	1.0	1.8	6.0
5	P21	21.8	0.5	1.2	6.5	3.3
5	P22	22.5	-0.1	3.3	0.4	1.5
5	P23	23.2	-1.6	2.0	-0.1	3.0
5	P24	22.3	0.8	2.0	1.2	1.2
5	P25	22.6	0.7	1.2	0.3	3.1
6	P1	22.0	1.0	0.1	5.4	1.7
6	P2	22.8	0.3	-0.6	0.9	-0.5
6	P3	23.2	-1.8	-0.8	0.2	-1.1
6	P4	22.4	0.2	-0.7	0.6	-0.8
6	P5	23.5	-1.1	-1.0	-1.5	-1.9
6	P6	23.2	0.5	-0.9	1.3	0.3
6	P7	21.9	0.7	0.3	1.2	1.0
6	P8	23.1	0.1	0.4	1.8	0.3
6	P9	23.5	0.3	0.1	1.0	1.0
6	P10	23.2	-1.5	-0.4	-1.3	-0.8
6	P11	23.5	-1.7	0.2	-0.9	0.3
6	P12	21.9	0.0	-0.1	0.0	1.4
6	P13	22.7	-0.3	1.5	0.7	0.1
6	P14	21.9	1.2	0.6	1.4	-0.1
6	P15	23.9	0.2	-1.0	-0.2	-0.9
6	P16	23.2	-0.8	-0.4	-0.4	-0.8
6	P17	22.7	-0.5	-0.5	-0.5	-1.0
6	P18	22.8	0.2	0.3	0.8	0.0



Project Number: NA		Tracking Code: 0202--0592					
Requested by: Eric Schrimper			Date: 1/11/02		Product Rev: NA		
Part #: QTE/QSE-100-01-L-D-A		Lot #: NA		Tech: T. Cook		Eng: J. Tozier	
Part description: 0.8mm Centerline High Speed Connector						Qty to test: 20	
Test Start: 1/30/02		Test Completed: 2/27/02					

6	P19	23.2	0.0	-0.5	-0.2	0.3
6	P20	22.4	1.5	0.5	0.1	0.8
6	P21	23.2	-0.3	0.7	-0.1	-0.5
6	P22	22.3	0.5	0.5	0.9	1.4
6	P23	22.4	1.1	0.3	0.2	-0.1
6	P24	22.7	0.3	0.6	0.9	0.4
6	P25	23.6	-0.5	-1.0	-1.5	-1.1
7	P1	22.5	1.8	2.9	2.7	1.3
7	P2	22.6	1.0	1.0	0.2	1.9
7	P3	22.3	0.1	3.1	0.7	2.9
7	P4	22.5	1.5	4.3	1.5	1.5
7	P5	21.9	2.5	1.0	0.6	2.2
7	P6	21.8	0.9	0.7	1.4	1.0
7	P7	21.6	0.6	2.5	0.3	3.6
7	P8	21.4	0.6	0.7	0.4	1.0
7	P9	22.5	0.1	0.8	-0.3	0.1
7	P10	22.2	-0.2	2.6	0.4	1.5
7	P11	22.5	-0.1	0.4	-0.6	-0.1
7	P12	22.9	0.2	1.6	-0.2	0.5
7	P13	23.0	-0.6	0.1	-0.6	0.8
7	P14	21.7	0.9	2.7	2.5	2.7
7	P15	22.2	-0.5	-0.3	0.8	1.0
7	P16	21.9	0.4	1.9	0.4	1.3
7	P17	21.7	-0.2	0.5	1.6	2.4
7	P18	21.8	0.0	0.7	0.8	1.4
7	P19	22.0	0.6	0.7	0.0	1.7
7	P20	22.5	0.7	-0.3	-0.6	3.2
7	P21	22.6	1.3	-0.7	-0.4	0.6
7	P22	21.9	0.6	-0.2	0.4	-0.2
7	P23	22.4	0.2	2.7	-0.4	0.1
7	P24	22.4	0.6	0.4	0.6	-0.2
7	P25	22.3	0.4	0.8	1.0	1.2
8	P1	22.0	0.2	0.8	0.5	1.2
8	P2	22.2	-0.4	0.0	-0.2	0.6
8	P3	21.9	-0.2	-0.6	0.7	-0.5
8	P4	21.5	-0.5	-0.2	0.1	-0.4
8	P5	22.7	-0.5	-0.7	-0.6	0.1
8	P6	21.7	-0.3	0.6	0.6	0.7



Project Number: NA		Tracking Code: 0202--0592					
Requested by: Eric Schrimper			Date: 1/11/02		Product Rev: NA		
Part #: QTE/QSE-100-01-L-D-A		Lot #: NA		Tech: T. Cook		Eng: J. Tozier	
Part description: 0.8mm Centerline High Speed Connector						Qty to test: 20	
Test Start: 1/30/02		Test Completed: 2/27/02					

8	P7	22.0	-0.6	-0.1	0.2	1.5
8	P8	22.1	0.0	0.2	0.2	0.1
8	P9	21.3	0.9	1.9	1.3	2.1
8	P10	21.2	-0.1	1.0	1.0	0.9
8	P11	21.6	0.2	1.3	1.5	1.7
8	P12	21.4	0.4	0.2	1.0	1.0
8	P13	21.9	0.2	0.0	0.5	0.3
8	P14	22.8	-0.9	-0.7	-0.5	-1.0
8	P15	21.8	1.2	0.7	0.4	0.5
8	P16	21.2	1.0	0.4	1.4	1.0
8	P17	21.9	-0.3	-0.7	0.8	-0.1
8	P18	21.7	0.2	0.6	1.3	0.7
8	P19	22.0	-0.2	-0.4	1.2	-0.3
8	P20	22.3	0.9	0.9	1.6	1.0
8	P21	21.9	1.9	1.0	2.3	1.7
8	P22	22.5	0.2	0.8	0.7	2.1
8	P23	21.6	1.6	1.2	0.9	2.0
8	P24	22.0	0.2	-0.1	2.1	1.0
8	P25	22.0	0.0	-0.5	0.2	-0.3



Project Number: NA		Tracking Code: 0202--0592	
Requested by: Eric Schrimper		Date: 1/11/02	Product Rev: NA
Part #: QTE/QSE-100-01-L-D-A	Lot #: NA	Tech: T. Cook	Eng: J. Tozier
Part description: 0.8mm Centerline High Speed Connector			Qty to test: 20
Test Start: 1/30/02	Test Completed: 2/27/02		

## EQUIPMENT AND CALIBRATION SCHEDULES

**Description:** Temperature/Humidity Chart Recorder

**Manufacturer:** Dickson

**Model:** THDX

**Serial #:** 9316255

**Accuracy:** Temp: +/- 1C; Humidity: +/-2% RH (0 - 60%) +/- 3% RH (61 - 95%).

... Last Cal: 6/15/01, Next Cal: 6/15/02

**Description:** Test Stand

**Manufacturer:** Chatillon

**Model:** TCD-1000

**Serial #:** 05 23 00 02

**Accuracy:** Speed Accuracy: +/-5% of max speed; Displacement: +/- .5% or +/- .005, whichever is greater.

... Last Cal: 6/15/01, Next Cal: 6/15/02

**Description:** Chatillon 1000 Lb Load Cell

**Manufacturer:** Chatillon

**Model:** Remote-1000

**Serial #:** E31399

**Accuracy:** +/- 0.3% of Full Scale +/- 1 LSC

... Last Cal: 6/14/01, Next Cal: 6/14/02

**Description:** Chatillon Remote Load Gage

**Manufacturer:** Chatillon

**Model:** DFGRS-R-ND

**Serial #:** A38240

**Accuracy:** +/- 0.3% of Full Scale +/- 1 LSC

... Last Cal: 6/14/01, Next Cal: 6/14/02

**Description:** Chatillon 50 Lb. Remote Load Cell

**Manufacturer:** Chatillon

**Model:** Remote Load Cell

**Serial #:** F31963

**Accuracy:** +/- .01 Lb.

... Last Cal: 11/26/01, Next Cal: 12/26/01



Project Number: NA		Tracking Code: 0202--0592	
Requested by: Eric Schrimper		Date: 1/11/02	Product Rev: NA
Part #: QTE/QSE-100-01-L-D-A	Lot #: NA	Tech: T. Cook	Eng: J. Tozier
Part description: 0.8mm Centerline High Speed Connector			Qty to test: 20
Test Start: 1/30/02	Test Completed: 2/27/02		

**Description:** Temperature/Humidity Chamber

**Manufacturer:** Thermotron

**Model:** SM-8-7800

**Serial #:** 30676

**Accuracy:** See Manual

... Last Cal: 6/14/01, Next Cal: 6/30/02

**Description:** Cascade Tek Forced Air Oven

**Manufacturer:** Cascade Tek

**Model:** TFO-5

**Serial #:** 0500100

**Accuracy:** Temp. Stability: +/- .1C/C change in ambient

... Last Cal: 6/14/01, Next Cal: 6/14/02

**Description:** Micro-Ohmmeter

**Manufacturer:** Keithley

**Model:** 580

**Serial #:** 0772740

**Accuracy:** See Manual

... Last Cal: 6/14/01, Next Cal: 6/14/02

**Description:** Multimeter /Data Acquisition System

**Manufacturer:** Keithley

**Model:** 2700

**Serial #:** 0791975

**Accuracy:** See Manual

... Last Cal: 6/14/01, Next Cal: 6/14/02

**Description:** Hipot Megommeter

**Manufacturer:** Hipotronics

**Model:** H306B-A

**Serial #:** M9905004

**Accuracy:** 2 % Full Scale Accuracy

... Last Cal: 6/14/01, Next Cal: 6/14/02