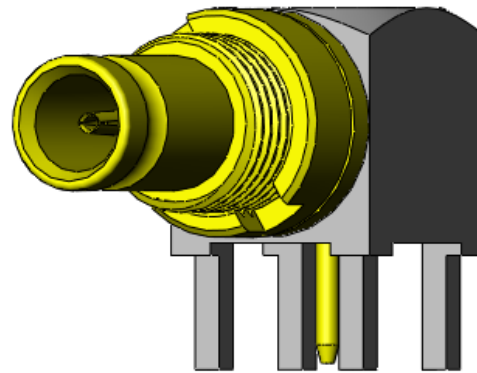
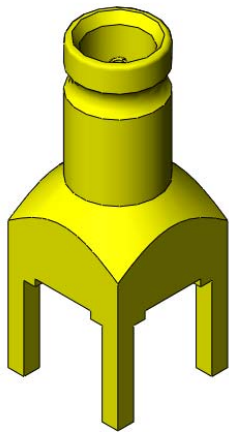




RF Characterization Report

DIN7A-J-P-X-ST-TH1
and
DIN7A-J-P-X-RA-BH1



Mated with:
RFB6T-79SP4-74SP3-0150



Description:
75-Ω DIN7 Board Mount Jacks

Series: DIN7

Description: 75-Ω DIN7 Board Mount Jacks

Table of Contents

<i>Introduction</i>	1
<i>Product Description</i>	1
<i>Results Summary</i>	3
Data.....	3
Data Plots.....	4
<i>Test Procedures</i>	7
Fixturing	7
Return Loss and VSWR Testing	8
Isolation Testing	9
<i>Equipment</i>	10

Series: DIN7**Description:** 75-Ω DIN7 Board Mount Jacks

Introduction

This testing was performed to evaluate the electrical performance of the DIN7A series of 75-Ω Board Mount Jacks.

Return Loss, VSWR and Isolation measurements were made over the frequency range from 130 MHz to 6 GHz for mated pairs of connectors. All measurements were made utilizing 4-layer 75-Ω test boards specifically designed for this project. The boards are referred to as “test board” in this report. The test boards were identified as PCB-103276-TST DIN7-HDBNC High-Speed Evaluation Board. One board had the straight through-hole jacks, and the other had the right-angle through-hole jacks. Each board had four traces connecting four pairs of DIN7 jacks in a 2-row pattern. The connectors within a row were on 0.5-inch centers, and the center-to-center spacing between rows was 3.0 inches. One set of four jacks on each board had Layer 1 signal launches, and the other set had Layer 4 signal launches. The measured results include not only the mated connectors but also the termination and board effects.

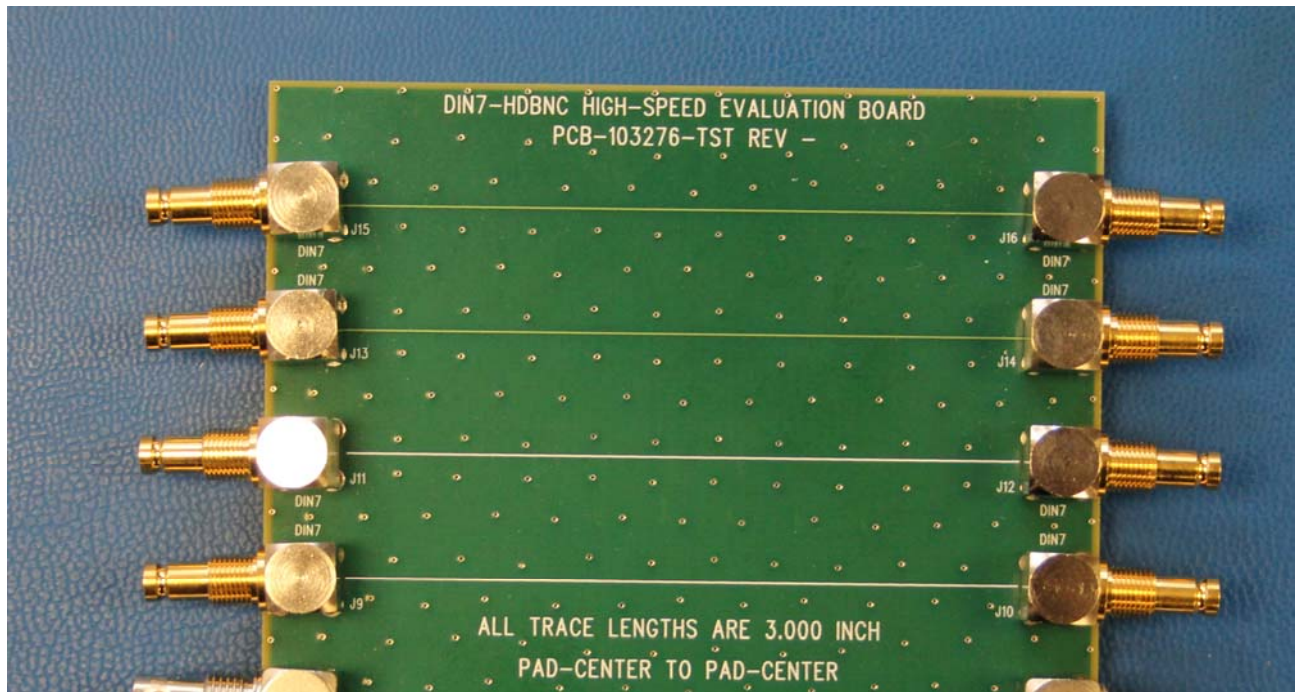
Product Description

The test sample was mounted to the test board, which has 75-Ω nominal impedance traces. The connector has an optimized launch (compensation) incorporated into the PCB design to facilitate improved impedance match over the frequency range of interest. The test board traces are approximately 3” long.

The DIN7 jacks were tested by mating to a DIN7 plug, which was part of a RFB6T-79SP4-74SP3-0150 cable assembly having a 75- Ω BNC (m) connector at its second end. Two (2) DIN7 jacks (a Layer 1 launch and a Layer 4 launch) of each type (TH1 and RA) were tested for Return Loss and VSWR. Isolation between a pair of Layer 1 launch jacks and between a pair of Layer 4 launch jacks of each connector type was also measured. The actual part numbers that were tested are shown in Table 1. A representative sample picture is shown in Figure 1.

Part Number	Board Mount Connector Type
DIN7A-J-P-X-ST-TH1	Straight Jack
DIN7A-J-P-X-RA-BH1	Right-Angle Jack

Table 1: Sample Description

Series: DIN7**Description:** 75-Ω DIN7 Board Mount Jacks**Figure 1: Test Sample Configuration**

Series: DIN7

Description: 75-Ω DIN7 Board Mount Jacks

Results Summary

Data

Return Loss, VSWR and Isolation measurements were performed over the frequency range from 130 MHz to 6 GHz. All measurements were performed with the board mount jack mated to a 75-Ω DIN male connector that was part of a 75-Ω flexible cable assembly. The table below lists the worst case Return Loss, VSWR and Isolation of the connector(s) over the frequency range tested.

Board Mount Connector	Launch	Return Loss (dB)	VSWR	Isolation (dB)
DIN7A-J-P-X-ST-TH1	Layer 1	-13.9	1.5	-48.9
DIN7A-J-P-X-ST-TH1	Layer 4	-18.2	1.3	-47.5
DIN7A-J-P-X-RA-BH1	Layer 1	-12.3	1.6	-57.3
DIN7A-J-P-X-RA-BH1	Layer 4	-18.2	1.3	-50.4

Table 2: Return Loss, VSWR & Isolation Worst Case Data

Series: DIN7
 Description: 75-Ω DIN7 Board Mount Jacks

Data Plots

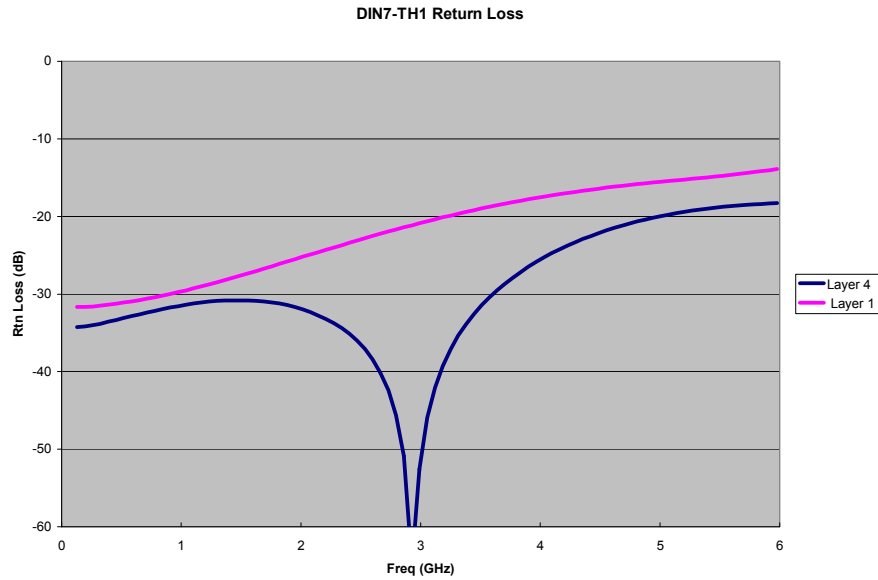


Figure 2: DIN7A-J-P-X-ST-TH1 Return Loss

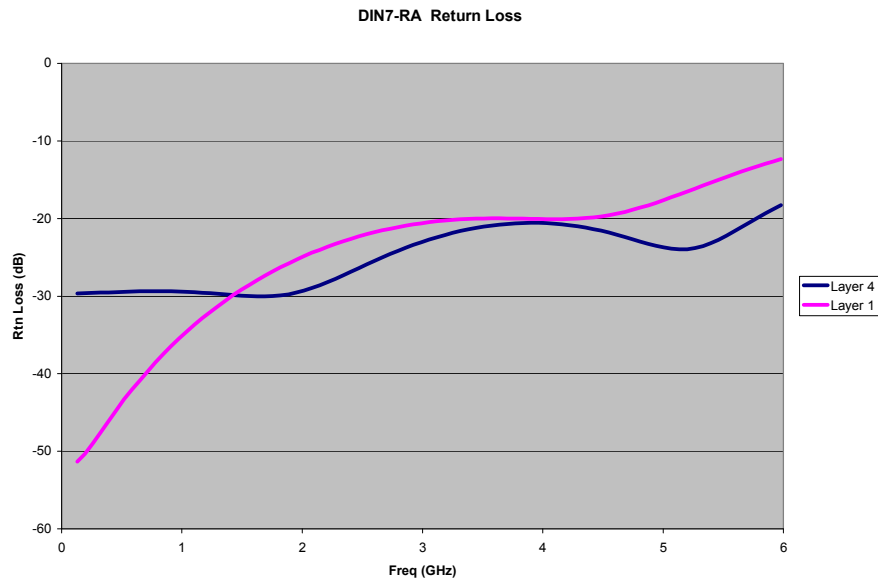


Figure 3: DIN7A-J-P-X-RA-BH1 Return Loss

Series: DIN7
 Description: 75-Ω DIN7 Board Mount Jacks

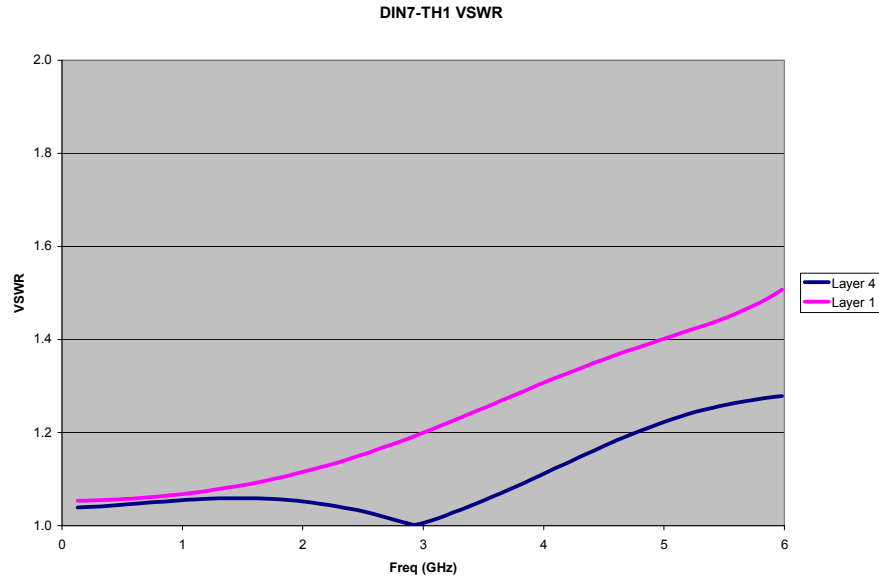


Figure 4: DIN7A-J-P-X-ST-TH1 VSWR

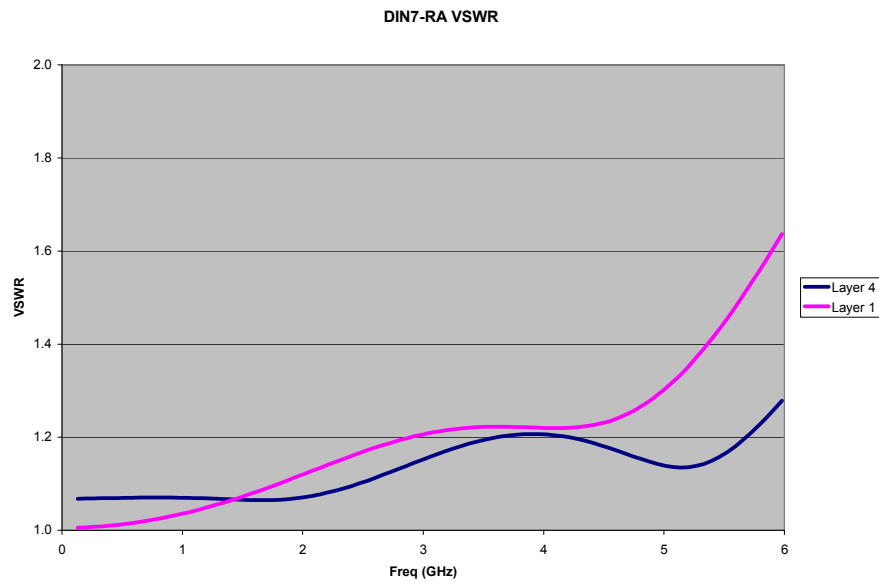


Figure 5: DIN7A-J-P-X-RA-BH1 VSWR

Series: DIN7
Description: 75-Ω DIN7 Board Mount Jacks

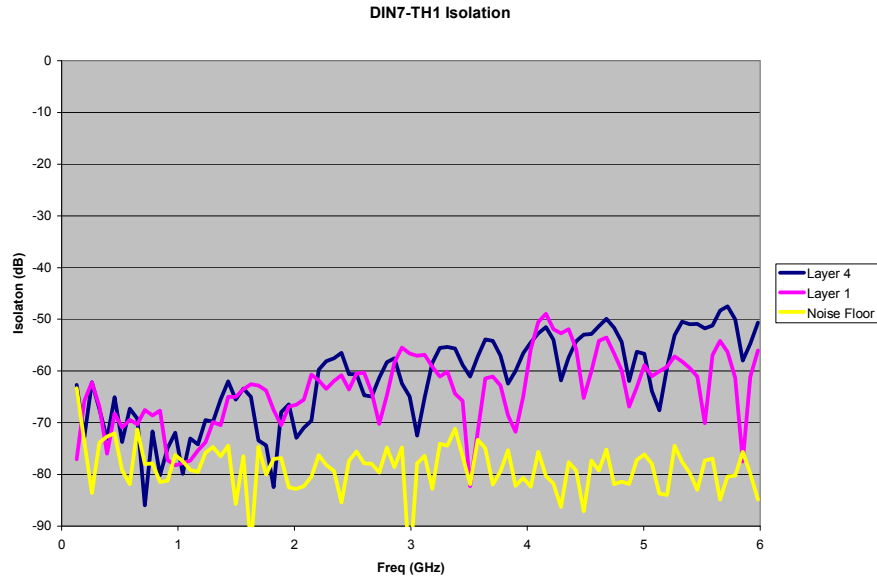


Figure 6: DIN7A-J-P-X-ST-TH1 Isolation

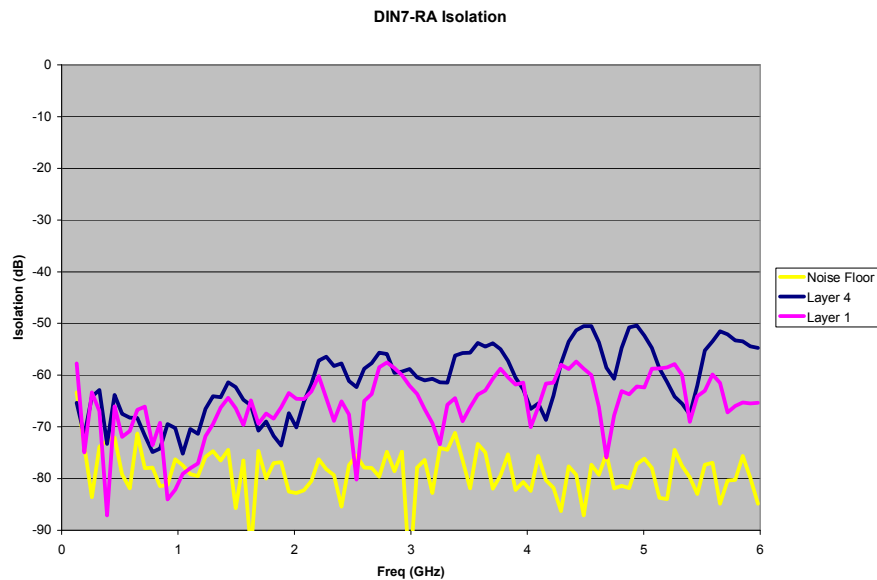


Figure 7: DIN7A-J-P-X-RA-BH1 Isolation

Series: DIN7

Description: 75- Ω DIN7 Board Mount Jacks

Test Procedures

Fixturing:

All measurements were performed using one of the test boards, which have 75- Ω traces (nominal impedance) that connect the four pairs of DIN7 jacks. During a Return Loss/VSWR measurement the DIN7 jack was mated to a RFB6T-79SP4-74SP3-0150, a 6.0-inch long 75- Ω flexible cable assembly. The far end connector on the test board was also mated to the same type of cable assembly, which was terminated in a 75- Ω load at its second end. During an Isolation measurement two adjacent DIN7 jacks (having the same type of signal path launch) were each mated to a RFB6T-79SP4-74SP3-0150 test cable. Two additional RFB6T-79SP4-74SP3-0150 cable assemblies terminated in 75- Ω loads were attached to the far end test board connectors.

A vector network analyzer was used to perform the measurements and was connected to the DUT as follows. One end of a 30-inch long 50- Ω SMA (m/m) test cable is attached to the network analyzer. The second end of the SMA test cable attaches to a SMA (f) to N (f) adapter. The adapter attaches to a 50- Ω N (m) to 75- Ω N (f) impedance matching pad. The matching pad attaches to a 75- Ω N (m) to BNC (f) adapter. The adapter attaches to the BNC (m) end of a RFB6T-79SP4-74SP3-0150 75- Ω test cable. The DIN7 plug end of the test cable attaches to the DUT. The far end of the test board trace is terminated in a 75- Ω load. The 75- Ω test cable DIN7 (m) connector and the board mount jack comprised the mated connector pair under test.

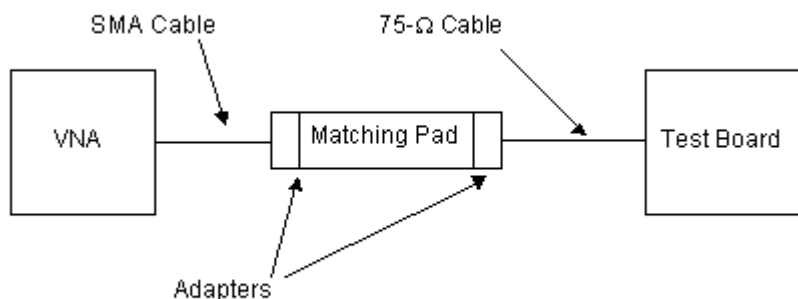


Figure 8: Test Setup for VSWR Measurement

Series: DIN7

Description: 75- Ω DIN7 Board Mount Jacks

Return Loss and VSWR Testing

All Return Loss and VSWR measurements were made using an HP 8720A vector network analyzer. It was set for a 201-point measurement response over the frequency range from 130 MHz to 13 GHz to allow use of the low-pass step response time domain transform capability. Response averaging was turned on and set to 8. An S11 1-port measurement calibration was performed at the end of the SMA test cable. The SMA test cable was attached the type N 50- Ω to 75- Ω matching pad, which attached to the DUT by means of a 75- Ω test cable described previously. The far end of the test board was terminated in a 75- Ω load.

The measured response was viewed in the time domain using the low-pass step transform and the real data format. Gating was turned on. The Gate Start and Stop flags were set around the response of the mated pair of interest. See Figure 9 below. The response format was set to linear magnitude (reflection coefficient), and the time domain transform was turned off (but the gate remained on). In converting back to the frequency domain, the effects of the response outside the Gate are removed. The reflection coefficient data was read by a computer, over the GPIB and mathematically corrected (multiplied by a factor of 3.72), to account for the two-way attenuation of the matching pad. The data was written in ASCII format to a data file. Data above 6 GHz is not used.

The attenuation effects of the 75- Ω test cable are not taken into account and are a minor source of error. Based on published nominal attenuation values for the test cable type, it is estimated that the error in return loss measurement at 6 GHz is about 0.15 dB. This is equivalent to an error of 0.01 for a VSWR of 1.3, an error of 0.01 for a VSWR of 1.5 and an error of 0.02 for a VSWR of 2.0. The errors are negative, which means the measured results are lower than the actual values.

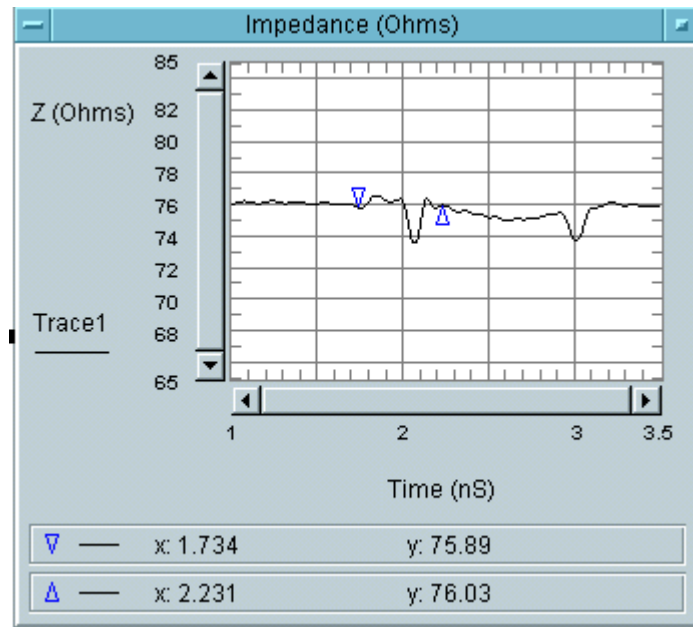
Series: DIN7**Description:** 75-Ω DIN7 Board Mount Jacks

Figure 9: VNA time domain response showing gate placement.

Isolation Testing

The Isolation measurement was made using an HP 8720A vector network analyzer. It was set up the same as for Return Loss and VSWR measurements, except that response averaging was set to 32 and resolution bandwidth was set to 300 Hz to increase dynamic range. An S21 thru response measurement calibration was performed to remove the losses of the test cables and matching pads from the measurement. The SMA test cables coming from the network analyzer were attached to 75-Ω test cables through matching pads and adapters as described previously. The DIN7 plug ends of the 75-Ω test cables connected to two adjacent jacks. The far end test board connectors were terminated to 75-Ω loads.

The measured response was viewed in log magnitude format. The isolation data was read by a computer over the GPIB and was written in ASCII format to a data file. Data was truncated at 6 GHz. Note that the coupling effects associated with the test board were included in the measurement.

The test system isolation measurement noise floor was measured by terminating the 75-Ω end of each matching pad in a 75-Ω load. The test cables were kept apart for this measurement.

Series: DIN7

Description: 75- Ω DIN7 Board Mount Jacks

Equipment

HP 8720A Network Analyzer

Pasternack PE7070 50- Ω N (m) to 75- Ω N (f) Matching Pads