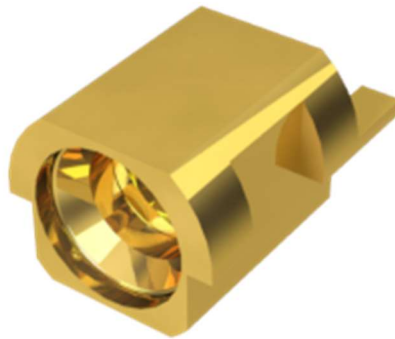




RF Characterization Report

SMPM-PX-P-XX-ST-EM-1

Test Date: 01 April 2020



Description **50 Ohm SMPM Plug, Edge Mount**

Series: SMPM-EM

Description: 50 Ohm SMPM Plug, Edge Mount

Table of Contents

Test Setup Information 1
 Scope: 1
 Instrument Setup & Test Accessories: 1
 Calibration Type: 1
 Adapter Use: 1
SMPM-PX-P-XX-ST-EM-1 Test Definition 2
 Connector Under Test: 2
 Results: SMPM-PX-P-XX-ST-EM-1 2
 VSWR 3
 Insertion Loss 3

Series: SMPM-EM**Description:** 50 Ohm SMPM Plug, Edge Mount

Test Setup Information

Scope:

Provide insertion loss and standing wave ratio performance parameters for SMPM-EM connector.

Instrument Setup & Test Accessories:

Network Analyzer	Keysight PNA N5227B (10 MHz - 67 GHz)
Averaging Factor	1
Smoothing	Off
IF Bandwidth	700 Hz
Sweep Start	10 MHz
Sweep End	67 GHz
Points	6700
Test Cables	Gore 0F0CACB036.0-LF (DC to 67 GHz)

Calibration Type:

A Keysight mechanical calibration is performed using the Keysight Economical Mechanical 1.85 mm Calibration kit.

Calibration Kit	Keysight 85058E 1.85mm Calibration kit
-----------------	--

Adapter Use:

1.85 mm Female to SMPM Female adapters was used for the measurements of SMPM-PX-P-XX-ST-EM-1. The adapter effects were removed from the measurement using the PNA's Fixture Removal method.

Series: SMPM-EM

Description: 50 Ohm SMPM Plug, Edge Mount

SMPM-PX-P-XX-ST-EM-1 Test Definition

Part Number	End 1	End 2
SMPM-PX-P-XX-ST-EM-1	SMPM	SMPM

Connector Under Test:

The device under test includes two SMPM’s connected back to back using a fixture.



Conclusion:

The maximum VSWR is specified as datasheet below. The sample meet the specification for VSWR.

Frequency	VSWR Max Spec
DC to 26.5 GHz	1.15
26.5 GHz to 40 GHz	1.25
40 GHz to 67 GHz	1.35

Results: SMPM-PX-P-XX-ST-EM-1

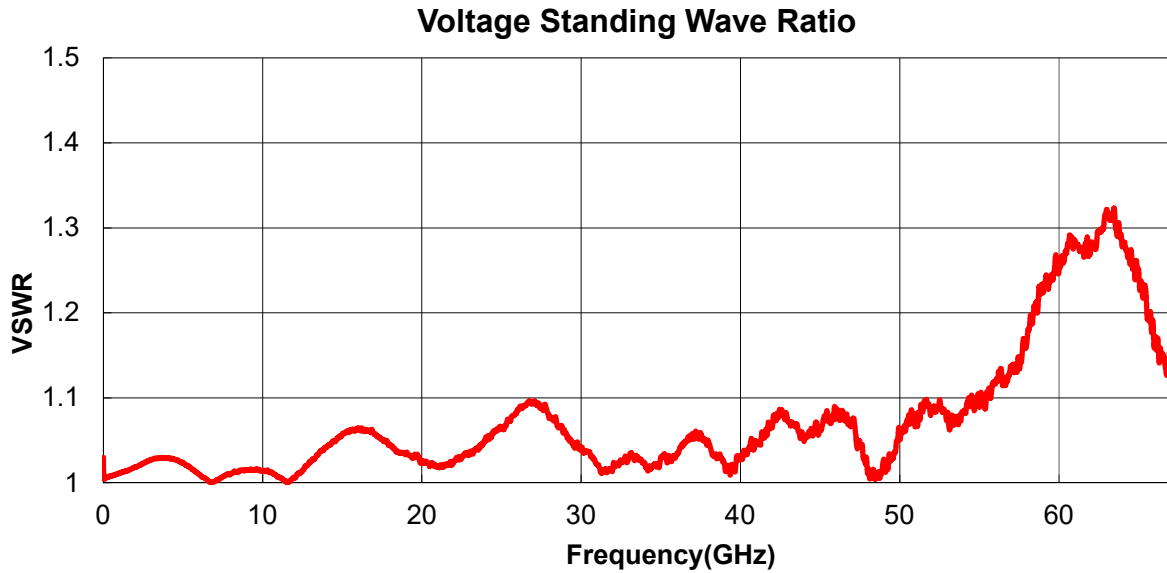
The raw results include two SMPM-EM connectors and the back to back adapter. We took the square root of the raw measurement to provide VSWR for one connector.

Frequency	Raw IL (min)	SWR (max)
DC to 26.5 GHz	-0.21 dB	1.09
26.5 GHz to 40 GHz	-0.26 dB	1.10
40 GHz to 67 GHz	-1.08 dB	1.32

Series: SMPM-EM

Description: 50 Ohm SMPM Plug, Edge Mount

VSWR



Insertion Loss

