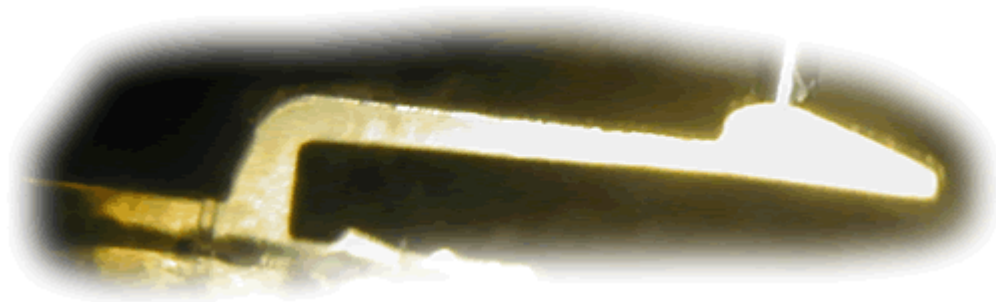




| | | | |
|---------------------------------|-------------------------|---------------------------|------------------|
| Project Number: NA | | Tracking Code: 0231--0726 | |
| Requested by: JEREMY WOOLDRIDGE | | Date: 8/1/02 | Product Rev: 1 |
| Part #: C-182-01-L | Lot #: NA | Tech: Troy Cook | Eng: John Tozier |
| Part description: C-182-01-L | | | Qty to test: 50 |
| Test Start: 08/05/02 | Test Completed: 8/19/02 | | |



NF Summary Report

PART DESCRIPTION

C-182-01-L



| | | | |
|---------------------------------|-------------------------|---------------------------|------------------|
| Project Number: NA | | Tracking Code: 0231--0726 | |
| Requested by: JEREMY WOOLDRIDGE | | Date: 8/1/02 | Product Rev: 1 |
| Part #: C-182-01-L | Lot #: NA | Tech: Troy Cook | Eng: John Tozier |
| Part description: C-182-01-L | | | Qty to test: 50 |
| Test Start: 08/05/02 | Test Completed: 8/19/02 | | |

CERTIFICATION

All instruments and measuring equipment were calibrated to National Institute for Standards and Technology (NIST) traceable standards according to ISO 10012-1 and ANSI/NCSL 2540-1, as applicable.

All contents contained herein are the property of Samtec. No portion of this report, in part or in full shall be reproduced without prior written approval of Samtec.



| | | | |
|---------------------------------|-------------------------|---------------------------|------------------|
| Project Number: NA | | Tracking Code: 0231--0726 | |
| Requested by: JEREMY WOOLDRIDGE | | Date: 8/1/02 | Product Rev: 1 |
| Part #: C-182-01-L | Lot #: NA | Tech: Troy Cook | Eng: John Tozier |
| Part description: C-182-01-L | | | Qty to test: 50 |
| Test Start: 08/05/02 | Test Completed: 8/19/02 | | |

SCOPE

To perform the following tests: NF and Contact Gaps (Contact Gaps added 8/15/02)

APPLICABLE DOCUMENTS

Standards: EIA Publication 364



| | | | |
|---------------------------------|-------------------------|---------------------------|------------------|
| Project Number: NA | | Tracking Code: 0231--0726 | |
| Requested by: JEREMY WOOLDRIDGE | | Date: 8/1/02 | Product Rev: 1 |
| Part #: C-182-01-L | Lot #: NA | Tech: Troy Cook | Eng: John Tozier |
| Part description: C-182-01-L | | | Qty to test: 50 |
| Test Start: 08/05/02 | Test Completed: 8/19/02 | | |

FLOWCHARTS

| TEST STEP | GROUP 1a | GROUP 1b | GROUP 1c Added 8/15/02 |
|--------------|------------------------------|---------------------------------|------------------------------|
| | Individual Contacts (30) min | Individual Contacts (30) min | Individual Contacts (30) min |
| 01 | Normal Force | Normal Force | Contact Gaps |
| 02 | Thermal Aging (NOT Mated) | | Thermal Aging (NOT Mated) |
| 03 | Normal Force | | Contact Gaps |

Thermal Aging = EIA-364-17, Test Condition 4, 105 deg C;

Time Condition 'B' for 250 hours

Normal Force = EIA-364-04



| | | | |
|---------------------------------|-------------------------|---------------------------|------------------|
| Project Number: NA | | Tracking Code: 0231--0726 | |
| Requested by: JEREMY WOOLDRIDGE | | Date: 8/1/02 | Product Rev: 1 |
| Part #: C-182-01-L | Lot #: NA | Tech: Troy Cook | Eng: John Tozier |
| Part description: C-182-01-L | | | Qty to test: 50 |
| Test Start: 08/05/02 | Test Completed: 8/19/02 | | |

ATTRIBUTE DEFINITION

Following is a brief, simplified description of attributes.

THERMAL AGING:

- 1) EIA-364-17, *Temperature Life with or without Electrical Load Test Procedure for Electrical Connectors*.
 - a) Test Condition 4 at 105° C.
 - b) Test Time Condition B for 250 hours.
- 2) Connectors are NOT mated.

CONTACT GAPS:

- 1) Heights above the surrounding plastic surface were measured before and after stressing the contacts (e.g. thermal aging, mechanical cycling, etc.).
- 2) Typically, all contacts on the connector are measured.

NORMAL FORCE (FOR CONTACTS TESTED OUTSIDE THE HOUSING):

- 1) Reference document: EIA-364-04, *Normal Force Test Procedure for Electrical Connectors*.
- 2) The contacts shall be tested in the loose state, *not* inserted in connector housing.
- 3) The contacts shall be prepared to allow access to the spring member at the same attitude and deflection level as would occur in actual use.
- 4) In the event that portions of the contact prevent insertion of the test probe and/or deflection of the spring member under evaluation, said material shall be removed leaving the appropriate contact surfaces exposed.
- 5) In the case of multi-tine contacts, each tine shall be tested independently on separate samples as required.
- 6) The connector housing shall be simulated, if required, in order to provide an accurate representation of the actual contact system performance.
- 7) A holding fixture shall be fashioned to allow the contact to be properly deflected.
- 8) Said holding fixture shall be mounted on a floating, adjustable, X-Y table on the base of the Dillon TC², computer controlled test stand with a deflection measurement system accuracy of 5 µm (0.0002”).
- 9) The probe shall be attached to a Dillon P/N 49761-0105, 5 N (1.1 Lb) load cell providing an accuracy of ± 0.2%.
- 10) The nominal deflection rate shall be 5 mm (0.2”)/minute.
- 11) Unless otherwise noted a minimum of five contacts shall be tested.
- 12) The force/deflection characteristic to load and unload each contact shall be repeated five times.
- 13) The system shall utilize the TC² software in order to acquire and record the test data.
- 14) The permanent set of each contact shall be measured within the TC² software.
- 15) The acquired data shall be graphed with the deflection data on the X-axis and the force data on the Y-axis and a print out will be stored with the Tracking Code paperwork.



| | | | |
|---------------------------------|-------------------------|---------------------------|------------------|
| Project Number: NA | | Tracking Code: 0231--0726 | |
| Requested by: JEREMY WOOLDRIDGE | | Date: 8/1/02 | Product Rev: 1 |
| Part #: C-182-01-L | Lot #: NA | Tech: Troy Cook | Eng: John Tozier |
| Part description: C-182-01-L | | | Qty to test: 50 |
| Test Start: 08/05/02 | Test Completed: 8/19/02 | | |

RESULTS

Contact Gaps

- **Initial**
 - Min-----0.0128 in----- Pass
 - Max-----0.0136 in----- Pass
- **Thermal**
 - Min-----0.0132 in
 - Max-----0.0144 in

Normal Force – Left Contact, 0.014” deflection

- **Initial**
 - Min-----71.16 gr.
 - Max-----98.84 gr.
- **Thermal**
 - Min----- 98.58 gr.
 - Max-----111.40 gr.

Normal Force – Right Contact, 0.014” deflection

- **Initial**
 - Min----- 80.06 gr.
 - Max-----93.73 gr.
- **Thermal**
 - Min----- 95.55 gr.
 - Max-----100.30 gr.



| | | | |
|---------------------------------|-------------------------|---------------------------|------------------|
| Project Number: NA | | Tracking Code: 0231--0726 | |
| Requested by: JEREMY WOOLDRIDGE | | Date: 8/1/02 | Product Rev: 1 |
| Part #: C-182-01-L | Lot #: NA | Tech: Troy Cook | Eng: John Tozier |
| Part description: C-182-01-L | | | Qty to test: 50 |
| Test Start: 08/05/02 | Test Completed: 8/19/02 | | |

DATA SUMMARIES

CONTACT GAPS:

Initial

Initial Data

Measurements in inches

| | B1 | |
|-----------------|--------|--|
| <i>Minimum</i> | 0.0128 | |
| <i>Maximum</i> | 0.0136 | |
| <i>Average</i> | 0.0133 | |
| <i>St. Dev.</i> | 0.0002 | |
| <i>Count</i> | 36 | |

Thermal

After Thermal Data

Measurements in inches

| | B1 | |
|-----------------|--------|--|
| <i>Minimum</i> | 0.0132 | |
| <i>Maximum</i> | 0.0144 | |
| <i>Average</i> | 0.0135 | |
| <i>St. Dev.</i> | 0.0003 | |
| <i>Count</i> | 27 | |



| | | | | | |
|---------------------------------|--|---------------------------|-----------------|-----------------|------------------|
| Project Number: NA | | Tracking Code: 0231--0726 | | | |
| Requested by: JEREMY WOOLDRIDGE | | Date: 8/1/02 | | Product Rev: 1 | |
| Part #: C-182-01-L | | Lot #: NA | Tech: Troy Cook | | Eng: John Tozier |
| Part description: C-182-01-L | | | | Qty to test: 50 | |
| Test Start: 08/05/02 | | Test Completed: 8/19/02 | | | |

DATA SUMMARIES Continued

NORMAL FORCE (FOR CONTACTS TESTED OUTSIDE THE HOUSING):

- 1) Calibrated force gauges were used along with computer controlled positioning equipment.
- 2) Typically, 8-10 readings were taken and the averages reported.

Left Contact Initial

| | Deflections in inches Forces in Grams | | | | Initial | |
|-----------------|---------------------------------------|--------------|--------------|--------------|--------------|------------|
| | <u>0.002</u> | <u>0.004</u> | <u>0.008</u> | <u>0.012</u> | <u>0.014</u> | <i>SET</i> |
| Averages | 13.48 | 25.47 | 47.55 | 68.92 | 79.31 | 0.0005 |
| Min | 11.70 | 22.21 | 42.51 | 62.67 | 71.16 | 0.0000 |
| Max | 16.93 | 30.90 | 59.10 | 86.69 | 98.84 | 0.0010 |
| St. Dev | 1.87 | 3.42 | 6.23 | 8.88 | 9.79 | 0.0004 |
| Count | 7 | 7 | 7 | 7 | 7 | 7 |

Left Contact Thermal

| | Deflections in inches, Forces in Grams | | | | Thermal |
|-----------------|--|--------------|--------------|--------------|--------------|
| | <u>0.002</u> | <u>0.004</u> | <u>0.008</u> | <u>0.012</u> | <u>0.014</u> |
| Averages | 15.97 | 31.07 | 62.64 | 91.27 | 105.12 |
| Min | 14.69 | 28.57 | 61.25 | 84.45 | 98.58 |
| Max | 19.01 | 33.76 | 65.97 | 96.63 | 111.40 |
| St. Dev | 1.24 | 1.34 | 1.71 | 2.94 | 3.05 |
| Count | 10 | 10 | 10 | 10 | 10 |



| | | | | | |
|---------------------------------|--|---------------------------|-----------------|-----------------|------------------|
| Project Number: NA | | Tracking Code: 0231--0726 | | | |
| Requested by: JEREMY WOOLDRIDGE | | Date: 8/1/02 | | Product Rev: 1 | |
| Part #: C-182-01-L | | Lot #: NA | Tech: Troy Cook | | Eng: John Tozier |
| Part description: C-182-01-L | | | | Qty to test: 50 | |
| Test Start: 08/05/02 | | Test Completed: 8/19/02 | | | |

DATA SUMMARIES Continued

Right Contact Initial

Deflections in inches Forces in Grams

| | 0.002 | 0.004 | 0.008 | 0.012 | 0.014 | SET |
|-----------------|--------------|--------------|--------------|--------------|--------------|------------|
| Averages | 11.93 | 25.55 | 51.31 | 75.52 | 86.68 | 0.0012 |
| Min | 6.45 | 19.34 | 43.79 | 67.97 | 80.06 | 0.0005 |
| Max | 15.10 | 29.22 | 56.48 | 82.42 | 93.73 | 0.0023 |
| St. Dev | 2.93 | 3.26 | 4.41 | 5.64 | 6.21 | 0.0006 |
| Count | 7 | 7 | 7 | 7 | 7 | 7 |

Right Contact Thermal

Deflections in inches Forces in Grams

| | 0.002 | 0.004 | 0.008 | 0.012 | 0.014 |
|-----------------|--------------|--------------|--------------|--------------|--------------|
| Averages | 14.43 | 28.70 | 57.25 | 85.17 | 98.40 |
| Min | 13.79 | 27.58 | 55.82 | 82.42 | 95.55 |
| Max | 14.78 | 29.73 | 58.39 | 87.04 | 100.30 |
| St. Dev | 0.29 | 0.68 | 0.86 | 1.41 | 1.55 |
| Count | 10 | 10 | 10 | 10 | 10 |



| | | | |
|---------------------------------|-------------------------|---------------------------|------------------|
| Project Number: NA | | Tracking Code: 0231--0726 | |
| Requested by: JEREMY WOOLDRIDGE | | Date: 8/1/02 | Product Rev: 1 |
| Part #: C-182-01-L | Lot #: NA | Tech: Troy Cook | Eng: John Tozier |
| Part description: C-182-01-L | | | Qty to test: 50 |
| Test Start: 08/05/02 | Test Completed: 8/19/02 | | |

DATA

CONTACT GAPS:

Initial

| | |
|------------------------------|-----------|
| Test Date: | 8/15/2002 |
| Operator: | TC |
| Temperature (C): | 23 |
| Humidity (RH): | 45% |
| Equipment Code Number | 26 |

| | |
|----------------------------|---------|
| Contact Description | |
| Contact Used In: | MEC8-DV |

Measurements in inches

Initial Data

| Sample# | B1 | |
|----------------|-----------|--|
| 1 | 0.0133 | |
| 2 | 0.0131 | |
| 3 | 0.0131 | |
| 4 | 0.0131 | |
| 5 | 0.0133 | |
| 6 | 0.0134 | |
| 7 | 0.0133 | |
| 8 | 0.0134 | |
| 9 | 0.0136 | |
| 10 | 0.0133 | |
| 11 | 0.0131 | |
| 12 | 0.0132 | |
| 13 | 0.0133 | |
| 14 | 0.0133 | |
| 15 | 0.0133 | |
| 16 | 0.0134 | |
| 17 | 0.0131 | |
| 18 | 0.0133 | |
| 19 | 0.0135 | |
| 20 | 0.0133 | |
| 21 | 0.0133 | |
| 22 | 0.0132 | |
| 23 | 0.0132 | |
| 24 | 0.0133 | |



| | | | |
|---------------------------------|-------------------------|---------------------------|------------------|
| Project Number: NA | | Tracking Code: 0231--0726 | |
| Requested by: JEREMY WOOLDRIDGE | | Date: 8/1/02 | Product Rev: 1 |
| Part #: C-182-01-L | Lot #: NA | Tech: Troy Cook | Eng: John Tozier |
| Part description: C-182-01-L | | | Qty to test: 50 |
| Test Start: 08/05/02 | Test Completed: 8/19/02 | | |

| | | |
|----|--------|--|
| 25 | 0.0134 | |
| 26 | 0.0134 | |
| 27 | 0.0134 | |
| 28 | 0.0129 | |
| 29 | 0.0128 | |
| 30 | 0.0133 | |
| 31 | 0.0133 | |
| 32 | 0.0134 | |
| 33 | 0.0135 | |
| 34 | 0.0132 | |
| 35 | 0.0133 | |
| 36 | 0.0136 | |



| | | | |
|---------------------------------|-------------------------|---------------------------|------------------|
| Project Number: NA | | Tracking Code: 0231--0726 | |
| Requested by: JEREMY WOOLDRIDGE | | Date: 8/1/02 | Product Rev: 1 |
| Part #: C-182-01-L | Lot #: NA | Tech: Troy Cook | Eng: John Tozier |
| Part description: C-182-01-L | | | Qty to test: 50 |
| Test Start: 08/05/02 | Test Completed: 8/19/02 | | |

**DATA Continued
Thermal**

| | |
|------------------------------|-----------|
| Test Date: | 8/15/2002 |
| Operator: | TC |
| Temperature (C): | 23 |
| Humidity (RH): | 45% |
| Equipment Code Number | 26 |

| | |
|----------------------------|---------|
| Contact Description | |
| Contact Used In: | MEC8-DV |

Measurements in inches

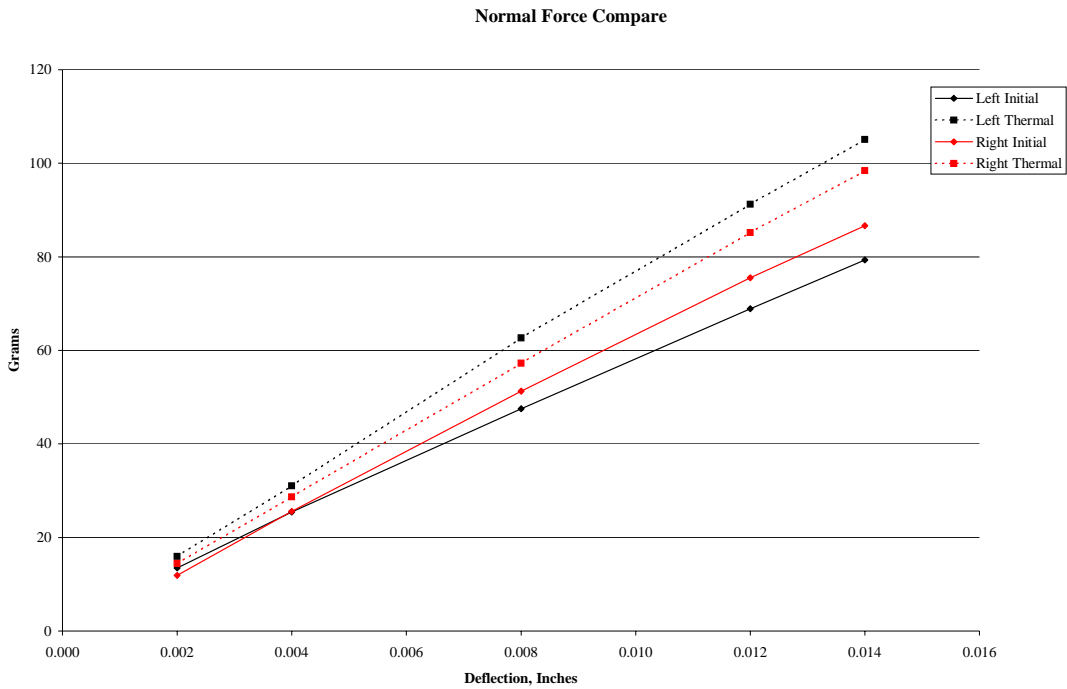
| Thermal Data | |
|--------------|--------|
| Sample# | B1 |
| 1 | 0.0143 |
| 2 | 0.0134 |
| 3 | 0.0134 |
| 4 | 0.0136 |
| 5 | 0.0136 |
| 6 | 0.0135 |
| 7 | 0.0132 |
| 8 | 0.0135 |
| 9 | 0.0135 |
| 10 | 0.0133 |
| 11 | 0.0132 |
| 12 | 0.0132 |
| 13 | 0.0132 |
| 14 | 0.0134 |
| 15 | 0.0135 |
| 16 | 0.0133 |
| 17 | 0.0134 |
| 18 | 0.0133 |
| 19 | 0.0144 |
| 20 | 0.0133 |
| 21 | 0.0134 |
| 22 | 0.0136 |
| 23 | 0.0136 |
| 24 | 0.0134 |
| 25 | 0.0132 |
| 26 | 0.0135 |
| 27 | 0.0135 |



| | | | |
|---------------------------------|-------------------------|---------------------------|------------------|
| Project Number: NA | | Tracking Code: 0231--0726 | |
| Requested by: JEREMY WOOLDRIDGE | | Date: 8/1/02 | Product Rev: 1 |
| Part #: C-182-01-L | Lot #: NA | Tech: Troy Cook | Eng: John Tozier |
| Part description: C-182-01-L | | | Qty to test: 50 |
| Test Start: 08/05/02 | Test Completed: 8/19/02 | | |

DATA Continued

NORMAL FORCE (FOR CONTACTS TESTED OUTSIDE THE HOUSING):





| | | | | | |
|---------------------------------|--|---------------------------|-----------------|-----------------|------------------|
| Project Number: NA | | Tracking Code: 0231--0726 | | | |
| Requested by: JEREMY WOOLDRIDGE | | Date: 8/1/02 | | Product Rev: 1 | |
| Part #: C-182-01-L | | Lot #: NA | Tech: Troy Cook | | Eng: John Tozier |
| Part description: C-182-01-L | | | | Qty to test: 50 | |
| Test Start: 08/05/02 | | Test Completed: 8/19/02 | | | |

DATA Continued

Left Contact Initial

| | |
|------------------------------|----------|
| Test Date: | 8/5/2002 |
| Operator: | TC |
| Temperature: | 22 |
| Humidity: | 44% |
| Equipment Code Number | 19 |
| Load Cell Code Number | 9 |

| | |
|----------------------------|------|
| Contact Description | |
| Contact Used In: | MEC8 |

Deflections in inches Forces in Grams

| | | N.F.@ | N.F.@ | N.F.@ | N.F.@ | N.F.@ | |
|------|-----------------|--------------|--------------|--------------|--------------|--------------|------------|
| | Sample # | 0.002 | 0.004 | 0.008 | 0.012 | 0.014 | SET |
| Left | 1 | 16.93 | 30.90 | 52.66 | 73.88 | 84.36 | 0.00042 |
| Left | 3 | 14.78 | 29.55 | 59.10 | 86.69 | 98.84 | 0.00057 |
| Left | 5 | 13.13 | 23.40 | 42.75 | 62.90 | 71.16 | 0.00105 |
| Left | 7 | 13.70 | 25.52 | 47.82 | 69.04 | 79.79 | 0.00066 |
| Left | 9 | 11.70 | 22.21 | 42.51 | 62.81 | 72.36 | 0.00000 |
| Left | 11 | 12.18 | 23.60 | 43.64 | 62.67 | 73.07 | 0.00073 |
| Left | 13 | 11.93 | 23.09 | 44.40 | 64.45 | 75.61 | 0.00000 |



| | | | | |
|---------------------------------|-------------------------|---------------------------|------------------|--|
| Project Number: NA | | Tracking Code: 0231--0726 | | |
| Requested by: JEREMY WOOLDRIDGE | | Date: 8/1/02 | Product Rev: 1 | |
| Part #: C-182-01-L | Lot #: NA | Tech: Troy Cook | Eng: John Tozier | |
| Part description: C-182-01-L | | | Qty to test: 50 | |
| Test Start: 08/05/02 | Test Completed: 8/19/02 | | | |

DATA Continued

Left Contact Thermal

| | |
|------------------------------|-----------|
| Test Date: | 8/19/2002 |
| Operator: | TC |
| Temperature: | 24 |
| Humidity: | 65% |
| Equipment Code Number | 19 |
| Load Cell Code Number | 9 |

| | |
|----------------------------|------|
| Contact Description | |
| Contact Used In: | MEC8 |

Deflections in inches, Forces in Grams

| Sample # | N.F.@ | N.F.@ | N.F.@ | N.F.@ | N.F.@ |
|-----------------|--------------|--------------|--------------|--------------|--------------|
| | 0.002 | 0.004 | 0.008 | 0.012 | 0.014 |
| 1 | 19.01 | 33.76 | 65.97 | 96.63 | 111.40 |
| 2 | 15.40 | 30.45 | 61.97 | 90.99 | 104.60 |
| 3 | 15.76 | 31.52 | 61.61 | 91.70 | 105.70 |
| 4 | 15.40 | 30.81 | 61.97 | 91.70 | 105.00 |
| 5 | 15.04 | 31.52 | 61.61 | 90.99 | 105.30 |
| 6 | 14.69 | 30.09 | 61.25 | 90.63 | 104.60 |
| 7 | 15.52 | 30.66 | 61.31 | 91.19 | 104.80 |
| 8 | 17.07 | 31.82 | 62.87 | 92.36 | 105.90 |
| 9 | 15.76 | 31.52 | 62.33 | 92.06 | 105.30 |
| 10 | 16.09 | 28.57 | 65.52 | 84.45 | 98.58 |



| | | | | | |
|---------------------------------|--|---------------------------|-----------------|-----------------|------------------|
| Project Number: NA | | Tracking Code: 0231--0726 | | | |
| Requested by: JEREMY WOOLDRIDGE | | Date: 8/1/02 | | Product Rev: 1 | |
| Part #: C-182-01-L | | Lot #: NA | Tech: Troy Cook | | Eng: John Tozier |
| Part description: C-182-01-L | | | | Qty to test: 50 | |
| Test Start: 08/05/02 | | Test Completed: 8/19/02 | | | |

DATA Continued

Right Contact Initial

| | |
|------------------------------|----------|
| Test Date: | 8/5/2002 |
| Operator: | TC |
| Temperature: | 22 |
| Humidity: | 44% |
| Equipment Code Number | 19 |
| Load Cell Code Number | 9 |

| | |
|----------------------------|------|
| Contact Description | |
| Contact Used In: | MEC8 |

Deflections in inches Forces in Grams

| | | N.F.@ | N.F.@ | N.F.@ | N.F.@ | N.F.@ | |
|-------|-----------------|--------------|--------------|--------------|--------------|--------------|------------|
| | Sample # | 0.002 | 0.004 | 0.008 | 0.012 | 0.014 | SET |
| Right | 2 | 14.33 | 28.66 | 56.42 | 81.79 | 93.73 | 0.00076 |
| Right | 4 | 11.34 | 25.07 | 52.54 | 79.10 | 91.94 | 0.00053 |
| Right | 6 | 13.16 | 26.06 | 49.97 | 71.19 | 80.60 | 0.00088 |
| Right | 8 | 12.90 | 26.06 | 49.70 | 71.73 | 81.94 | 0.00131 |
| Right | 10 | 6.45 | 19.34 | 43.79 | 67.97 | 80.06 | 0.00227 |
| Right | 12 | 10.21 | 24.45 | 50.24 | 74.42 | 84.90 | 0.00188 |
| Right | 14 | 15.10 | 29.22 | 56.48 | 82.42 | 93.58 | 0.00095 |



| | | | | |
|---------------------------------|-------------------------|---------------------------|------------------|--|
| Project Number: NA | | Tracking Code: 0231--0726 | | |
| Requested by: JEREMY WOOLDRIDGE | | Date: 8/1/02 | Product Rev: 1 | |
| Part #: C-182-01-L | Lot #: NA | Tech: Troy Cook | Eng: John Tozier | |
| Part description: C-182-01-L | | | Qty to test: 50 | |
| Test Start: 08/05/02 | Test Completed: 8/19/02 | | | |

DATA Continued

Right Contact Thermal

| | |
|------------------------------|-----------|
| Test Date: | 8/19/2002 |
| Operator: | TC |
| Temperature: | 23 |
| Humidity: | 62% |
| Equipment Code Number | 19 |
| Load Cell Code Number | 9 |

| | |
|----------------------------|------|
| Contact Description | |
| Contact Used In: | MEC8 |

Deflections in inches Forces in Grams

| Sample # | N.F.@ | N.F.@ | N.F.@ | N.F.@ | N.F.@ |
|-----------------|--------------|--------------|--------------|--------------|--------------|
| | 0.002 | 0.004 | 0.008 | 0.012 | 0.014 |
| 1 | 14.45 | 28.57 | 56.81 | 85.37 | 98.18 |
| 2 | 14.45 | 28.57 | 57.13 | 85.70 | 98.84 |
| 3 | 14.12 | 28.24 | 56.81 | 84.72 | 97.19 |
| 4 | 13.79 | 27.58 | 55.82 | 82.42 | 95.55 |
| 5 | 14.45 | 28.57 | 57.46 | 85.70 | 98.51 |
| 6 | 14.69 | 29.73 | 58.39 | 87.04 | 100.30 |
| 7 | 14.78 | 29.22 | 58.12 | 86.03 | 99.49 |
| 8 | 14.45 | 28.57 | 58.12 | 85.70 | 99.82 |
| 9 | 14.69 | 29.73 | 57.67 | 85.97 | 99.58 |
| 10 | 14.45 | 28.24 | 56.15 | 83.07 | 96.54 |



| | | | |
|---------------------------------|-------------------------|---------------------------|------------------|
| Project Number: NA | | Tracking Code: 0231--0726 | |
| Requested by: JEREMY WOOLDRIDGE | | Date: 8/1/02 | Product Rev: 1 |
| Part #: C-182-01-L | Lot #: NA | Tech: Troy Cook | Eng: John Tozier |
| Part description: C-182-01-L | | | Qty to test: 50 |
| Test Start: 08/05/02 | Test Completed: 8/19/02 | | |

EQUIPMENT AND CALIBRATION SCHEDULES

Equipment #: 20

Description: Temperature/Humidity Chart Recorder

Manufacturer: Dickson

Model: THDX

Serial #: 9316255

Accuracy: Temp: +/- 1C; Humidity: +/-2% RH (0 - 60%) +/- 3% RH (61 - 95%).

... Last Cal: 7/15/02, Next Cal: 7/15/03

Equipment #: 15

Description: Cascade Tek Forced Air Oven

Manufacturer: Cascade Tek

Model: TFO-5

Serial #: 0500100

Accuracy: Temp. Stability: +/- .1C/C change in ambient

... Last Cal: 6/25/02, Next Cal: 6/25/03

Equipment #: 19

Description: Test Stand

Manufacturer: Dillon

Model: PCM

Serial #: 280769

Accuracy: Speed Accuracy: +/- 5% of indicated speed; Displacement: +/- 5 micrometers.

... Last Cal: 6/15/01, Next Cal: 8/31/02

Equipment #: 9

Description: 5 N Load Cell

Manufacturer: Dillon

Model: TC2 Load Cell

Serial #: 5370

Accuracy: +/- 0.2% of Full Scale +/- 1 LSC

... Last Cal: 5/6/02, Next Cal: 5/6/03



| | | | |
|---------------------------------|-------------------------|---------------------------|------------------|
| Project Number: NA | | Tracking Code: 0231--0726 | |
| Requested by: JEREMY WOOLDRIDGE | | Date: 8/1/02 | Product Rev: 1 |
| Part #: C-182-01-L | Lot #: NA | Tech: Troy Cook | Eng: John Tozier |
| Part description: C-182-01-L | | | Qty to test: 50 |
| Test Start: 08/05/02 | Test Completed: 8/19/02 | | |

Equipment #: 26
Description: 6"X 6" Video Measuring Machine
Manufacturer: Optical Gauging Products
Model: Smartscope 200 CFOV
Serial #: SF2001956
Accuracy: See Manual
... Last Cal: 8/02, Next Cal: 8/03